



**ROCKFORD BOARD OF EDUCATION
INVITATION FOR BID ON SUPPLIES, MATERIALS, EQUIPMENT OR SERVICES
FOR SCHOOL DISTRICT NO. 205
ROCKFORD, ILLINOIS**

IFB No. **20-03 Athletic Turf Maintenance and Weed Control**

DATE: **July 29, 2019**

RE: **ADDENDUM NO. 1**

To All Bidders:

Included are modifications, clarifications and/or corrections for the Project Manual and are hereby made a part of the contract documents. Please attach this addendum to the Project Manual(s) in your possession. Please note the receipt of this addendum on the bid form. Bidders shall review changes to all portions of this work as changes to one portion may affect the work of another.

If you plan to hand deliver your IFB submission on the due date, please note you must check in on the 2nd floor prior to coming to the bid opening. Please allow time for this as late submission will not be accepted.

Refer all questions relative to the business aspect, Instructions to Bidders, Special Conditions, and questions concerning the technical aspect of the documents to the Director of Purchasing by email at purchasingdeptstaff@rps205.com.

CLARIFICATIONS/MODIFICATIONS

Included in this addendum are boundary maps for Rockford Public Schools property.

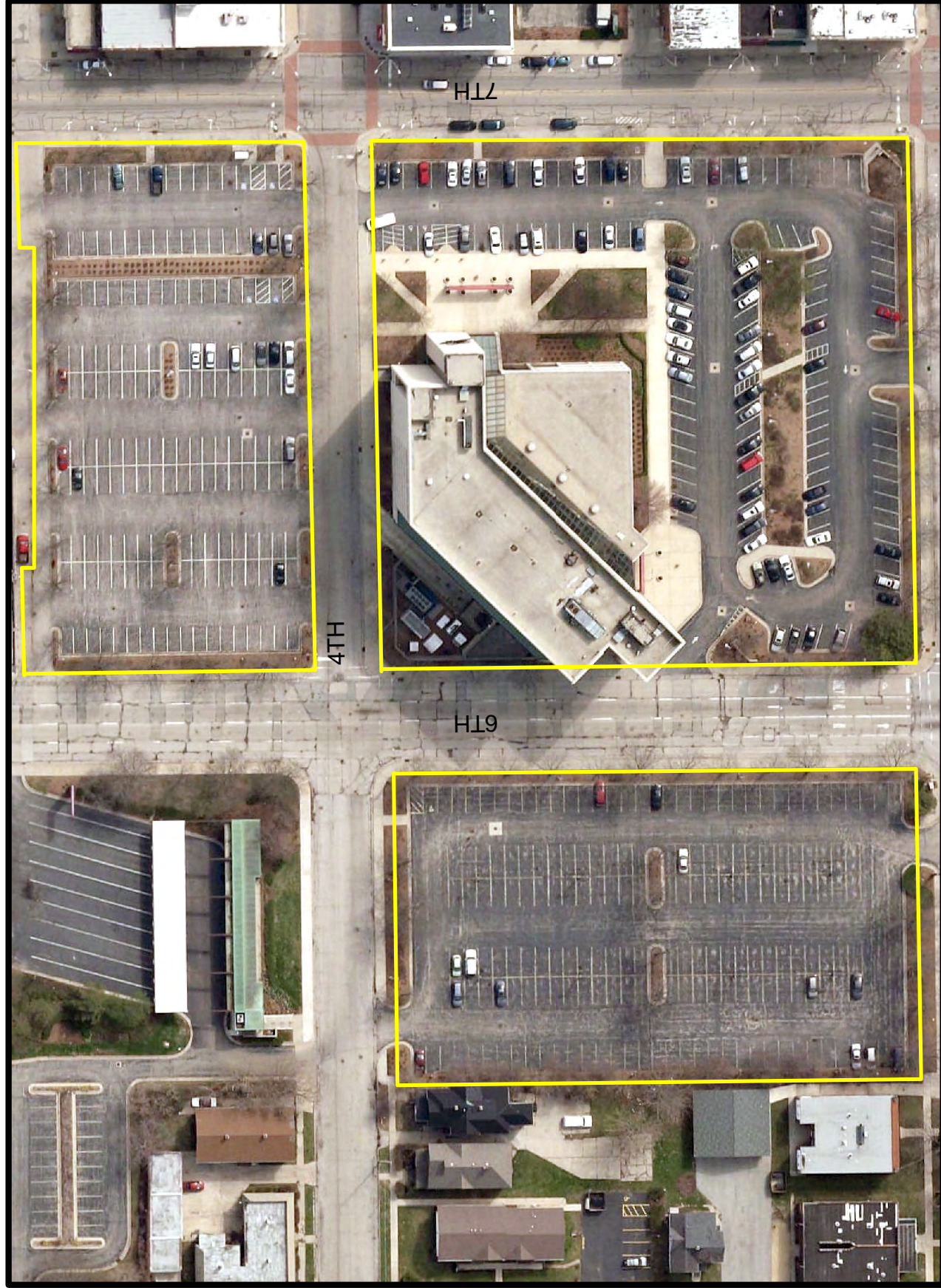
****The Bid Opening date for 20-03 Athletic Turf Maintenance and Weed Control has been changed to Tuesday, August 6, 2019. Bids will be due at 2:00 PM at 501 7th St, Rockford, IL 61104.****

ROCKFORD BOARD OF EDUCATION

By: Dane Youngblood
Director of Purchasing

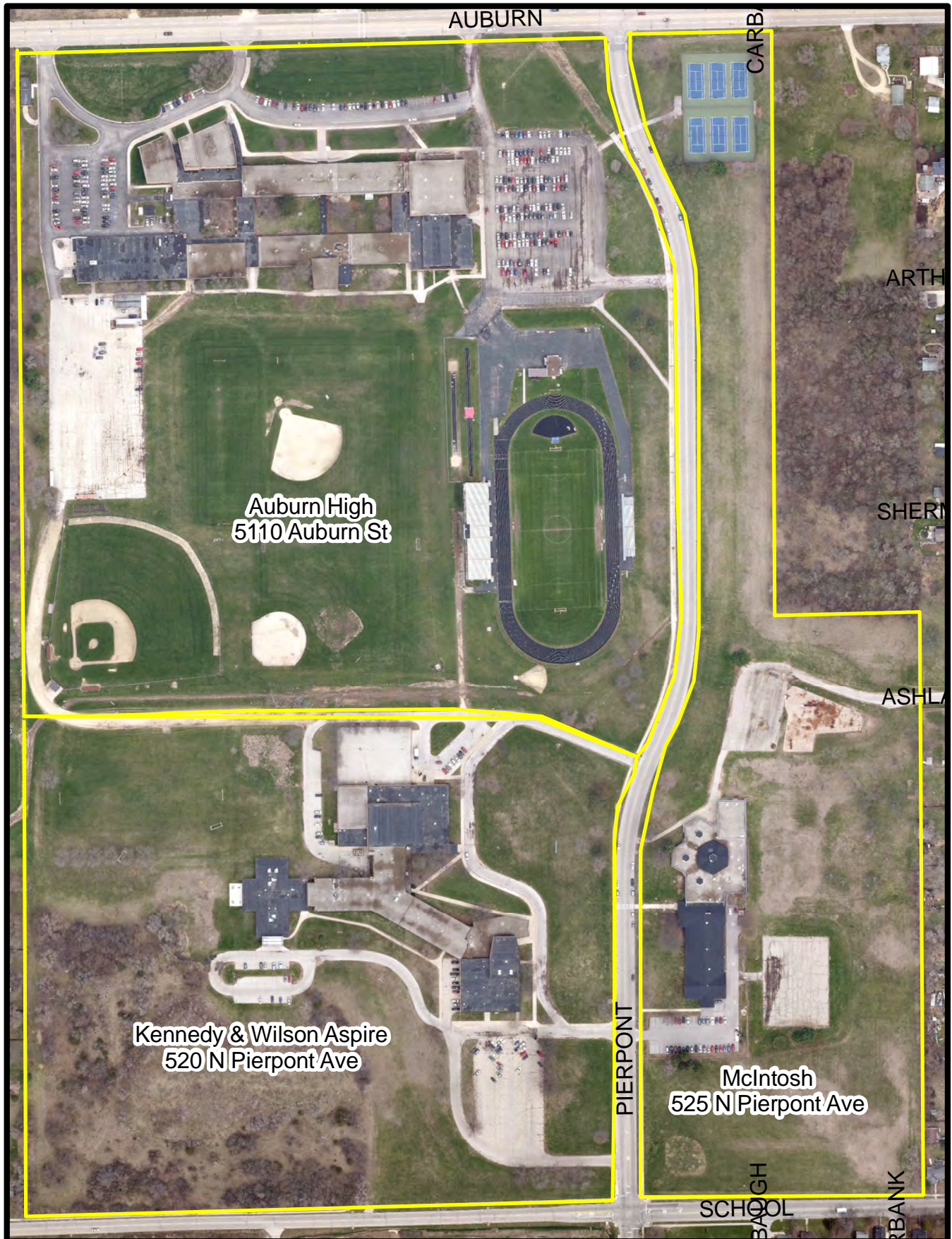
RPS 205 Administration

501 7th Street



Rockford Public Schools

Auburn, Kennedy, McIntosh



Barbour Language Acadamy

1506 Clover Ave



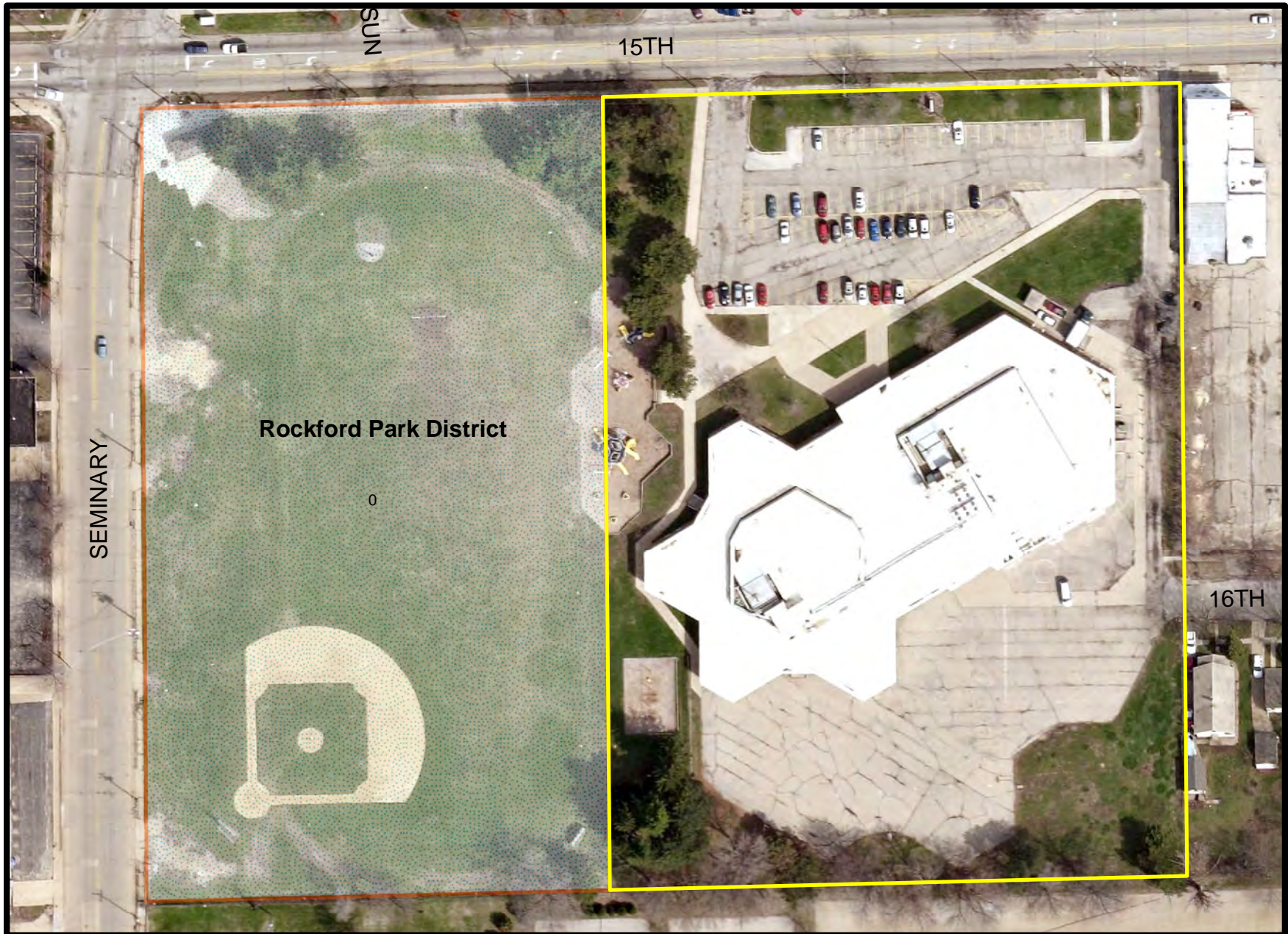
Rockford Public Schools



0 65 130 Feet

Beyer School

333 15th Avenue



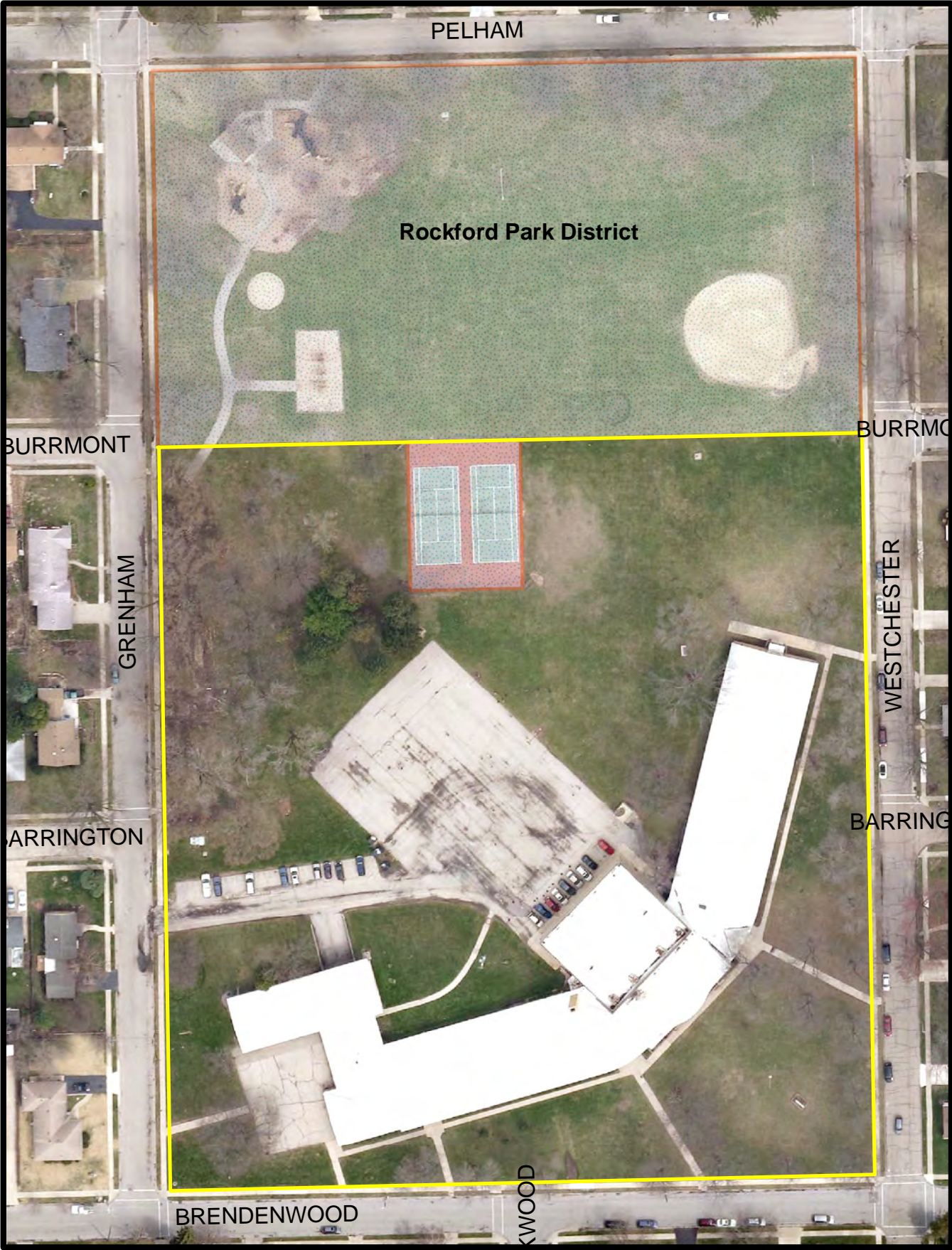
Rockford Public Schools



0 50 100 200 Feet

Bloom School

2912 Brendenwood Rd



Brookview School

1750 Madron Road



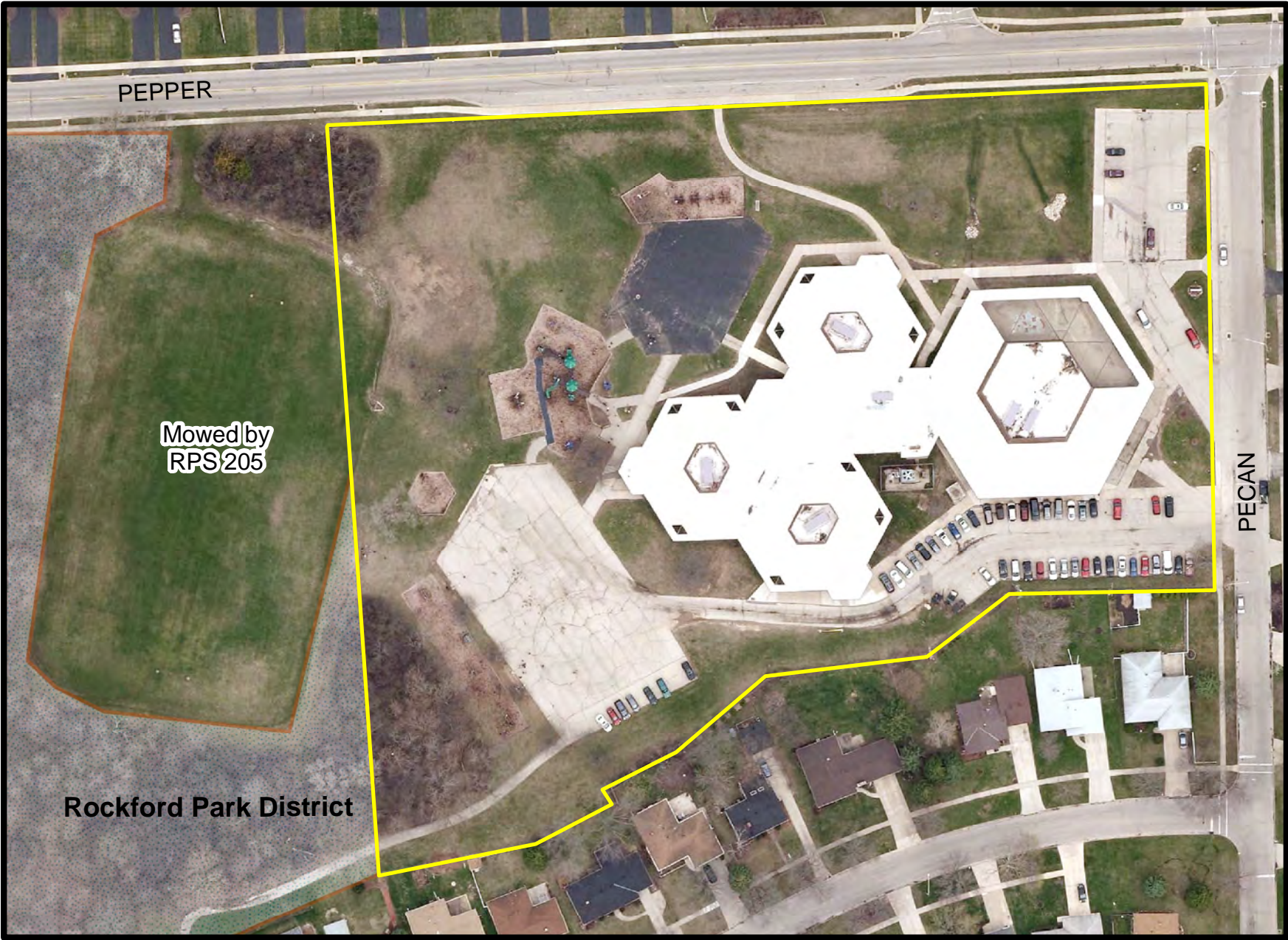
Rockford Public Schools



0 40 80 Feet

Carlson School

4015 Pepper Drive



Rockford Public Schools



0 55 110 Feet

Cherry Valley School
6754 Armer Dr.



WinGIS, Winnebago County



0 150 300 Feet

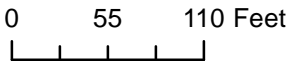
SCALE: 1:1,776

Conklin School

3003 Halsted Road



Rockford Public Schools



Dennis School

730 Lincoln Park Blvd



Rockford Public Schools



0 60 120 Feet

A horizontal scale bar with three segments. The first segment is labeled "0", the second "60", and the third "120 Feet".

East High School

2929 Charles Street



Rockford Public Schools

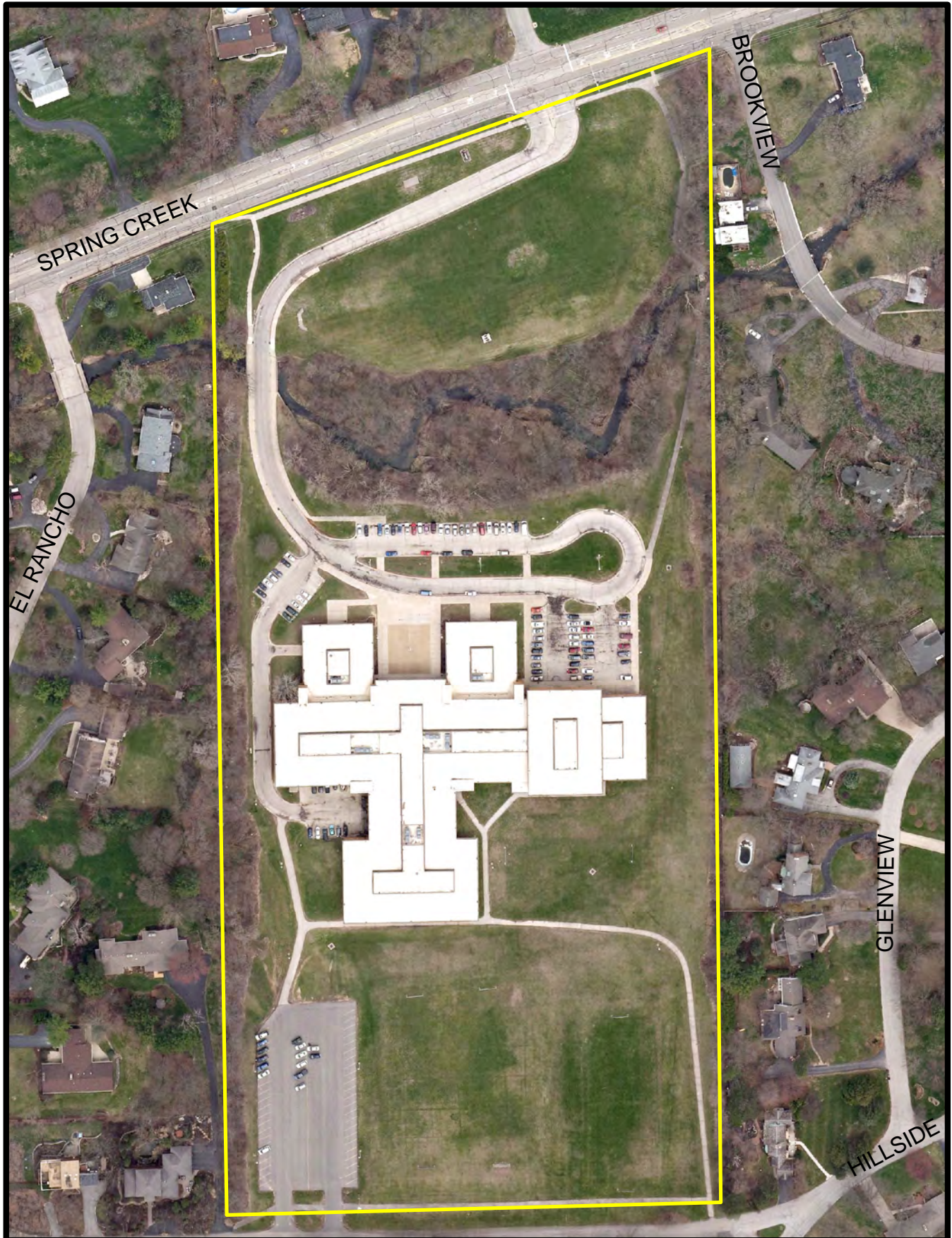


0 90 180 Feet

A horizontal scale bar with three segments. The first segment is labeled '0', the second '90', and the third '180 Feet'.

Eisenhower Middle School

3525 Spring Creek Road



Ellis Arts Academy

222 South Central Ave



Rockford Public Schools



0 55 110 Feet

A scale bar with three segments, labeled 0, 55, and 110 Feet. The segments are of increasing length, corresponding to the values.

Fairview Early Childhood

512 Fairview Ave



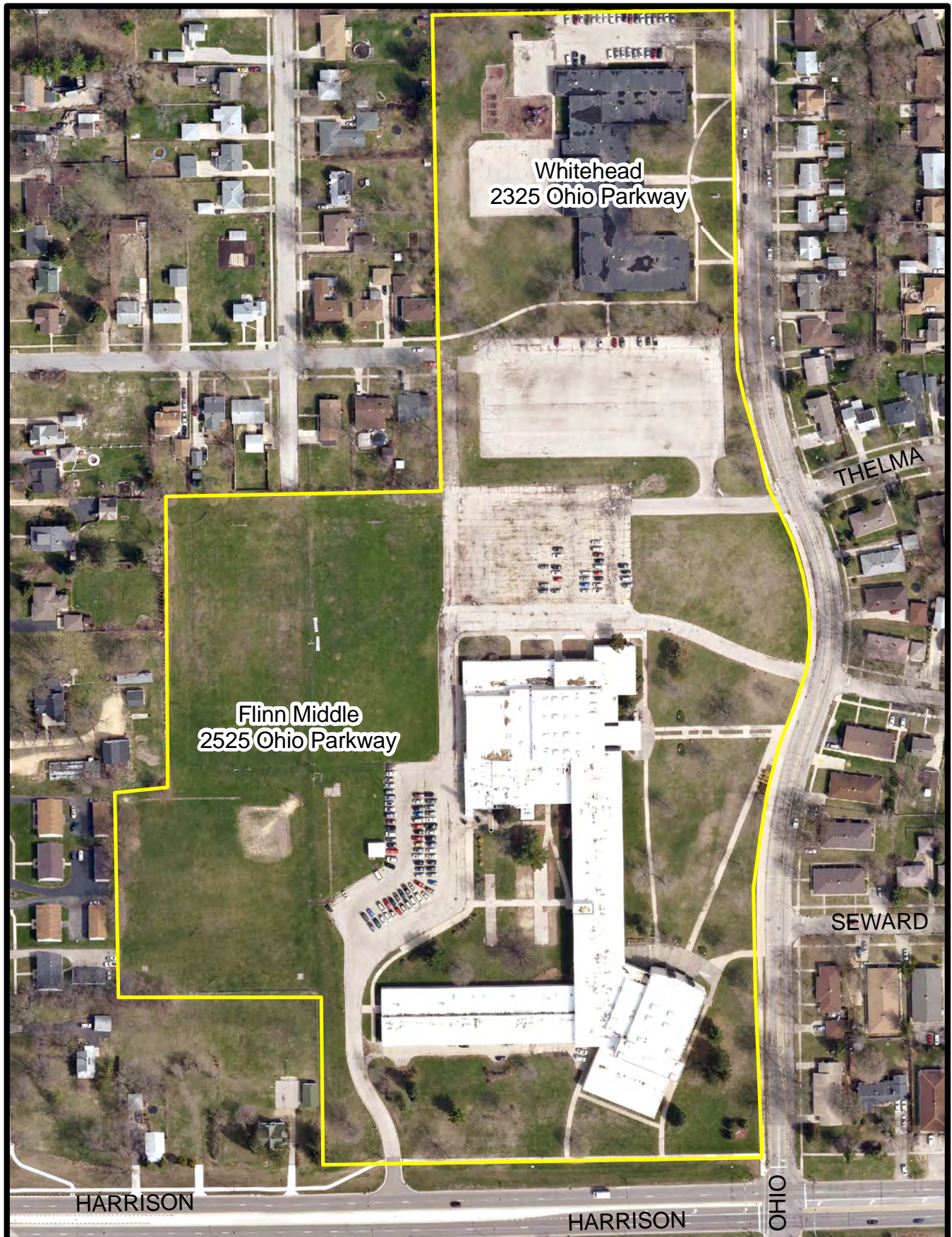
Rockford Public Schools



0 37.5 75 Feet

A horizontal scale bar with three segments. The first segment is labeled '0', the second '37.5', and the third '75 Feet'.

Flinn - Whitehead



Froberg School

4555 20th Street



Rockford Park District

Rockford Public Schools



0 60 120 240 Feet

Gregory

4820 Carol Ct



Rockford Public Schools



0 65 130 Feet

A horizontal scale bar with three segments. The first segment is labeled '0', the second '65', and the third '130 Feet'.

Guilford Road Field

7236 Guilford Road



Rockford Public Schools



0 70 140 Feet

Guilford High School

5620 Spring Creek Road



Haskell School

515 Maple St.

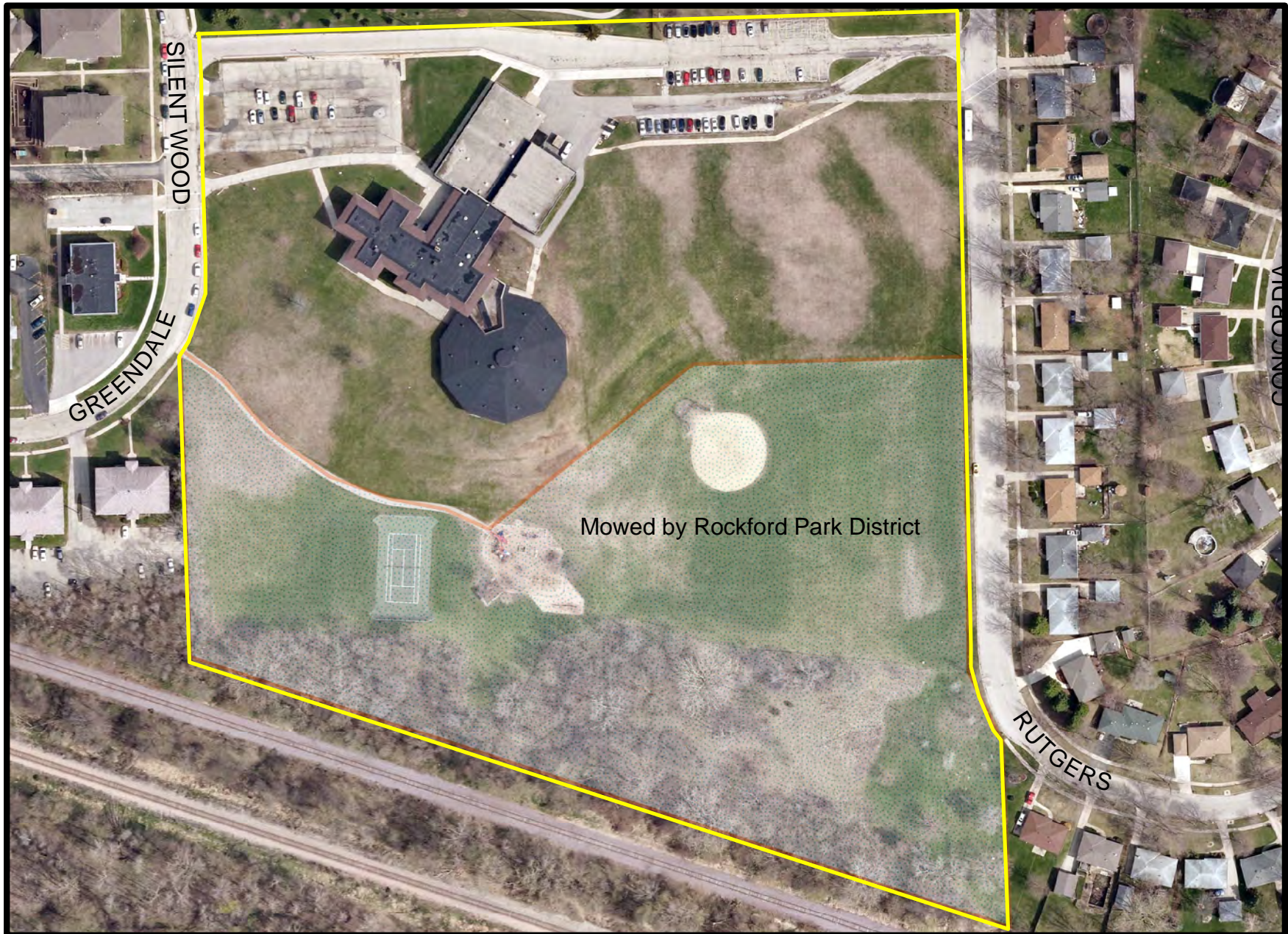


0 150 300 Feet

SCALE: 1:1,746

Hillman School

3701 Greendale Drive



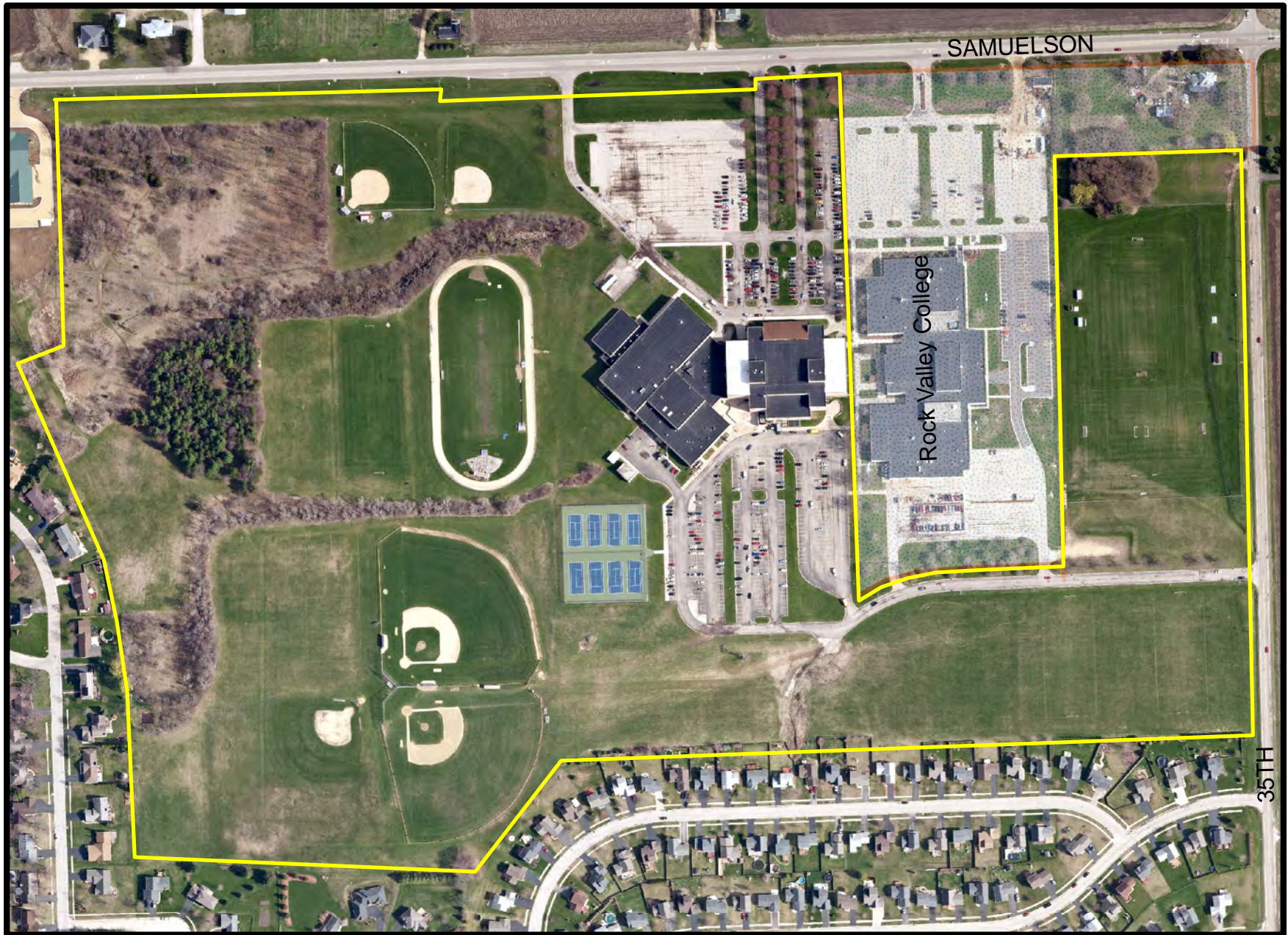
Rockford Public Schools



0 80 160 Feet

Jefferson High School

4545 Samuelson Road



Rockford Public Schools

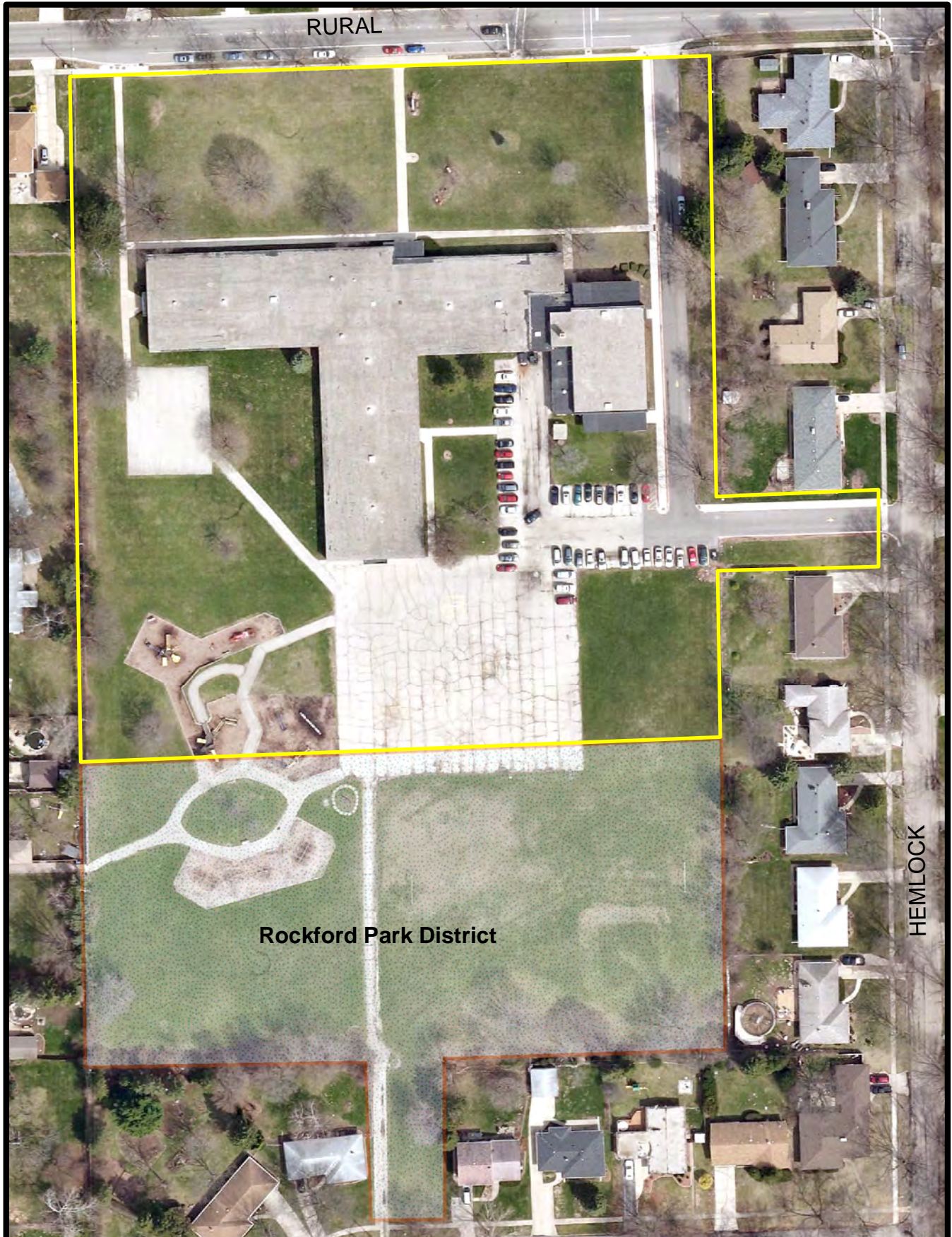


0 175 350 700 Feet

A scale bar with markings for 0, 175, 350, and 700 feet.

Johnson School

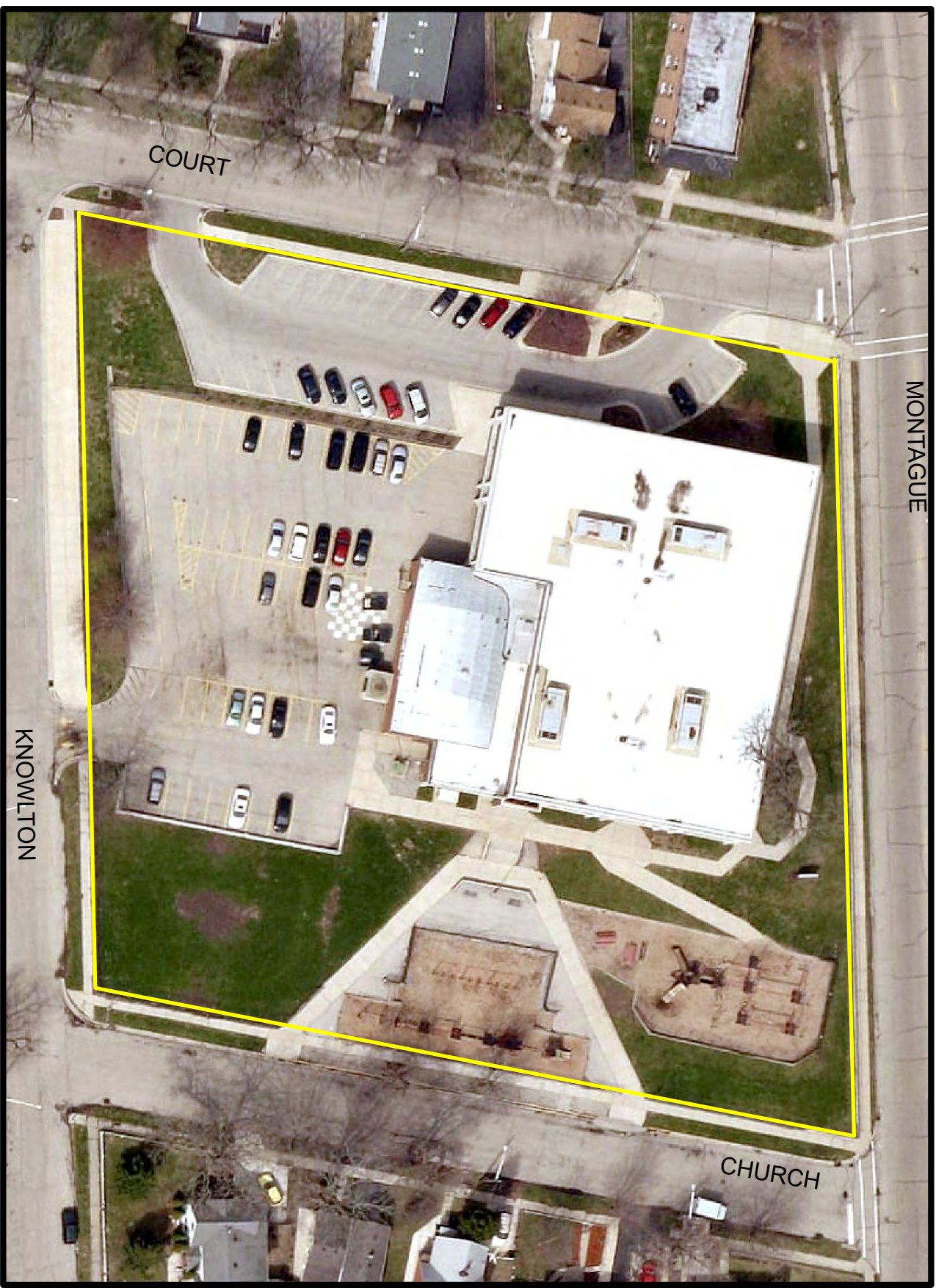
3805 Rural Street



King School

1306 South Court Street

MONTAGUE



CHURCH

COURT

KNOWLTON

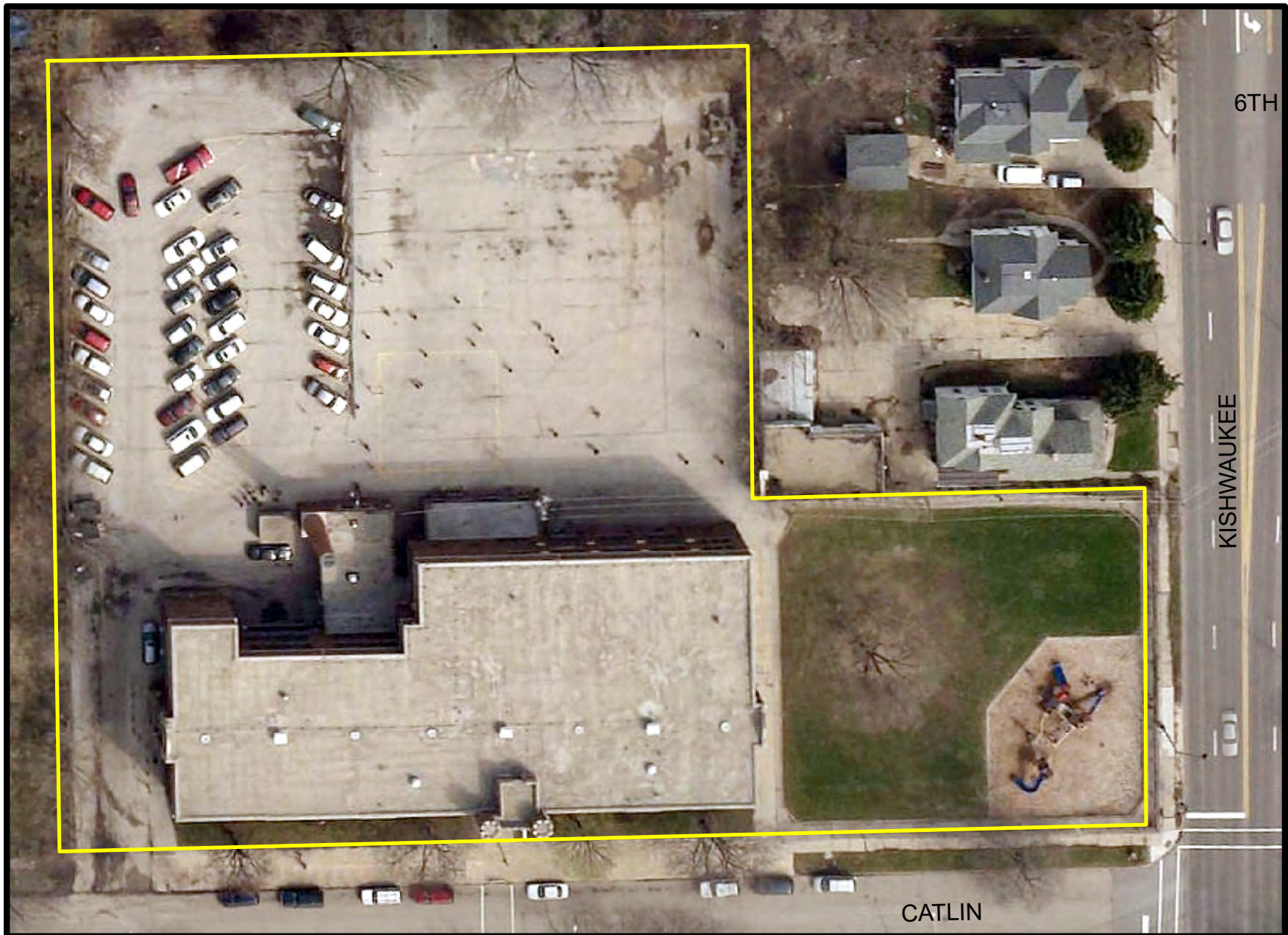
Rockford Public Schools



0 30 60 120 Feet

Kishwaukee School

526 Catlin Street



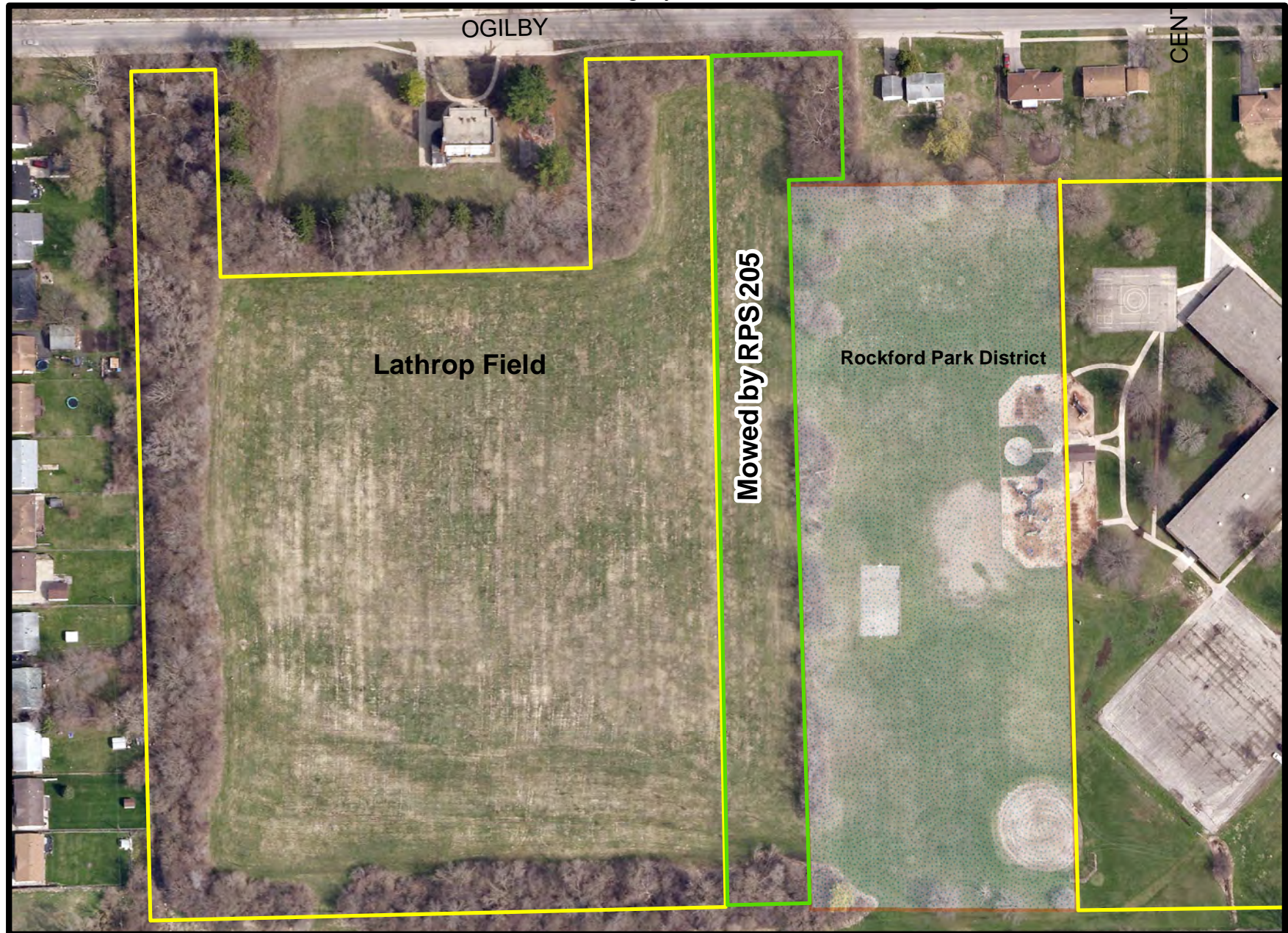
Rockford Public Schools



0 27 54 108 Feet

Lathrop Field

1380 Ogilby Road

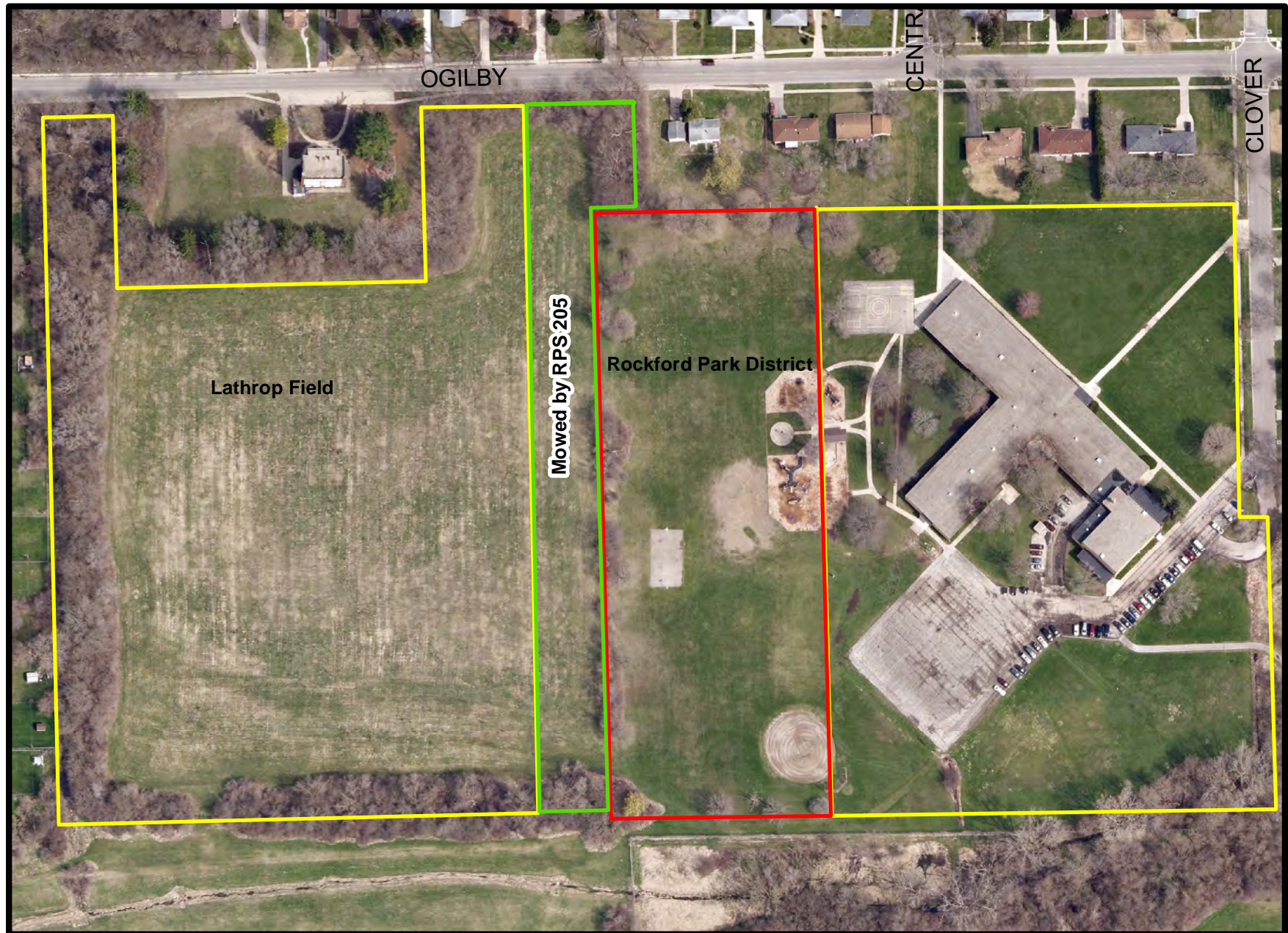


Rockford Public Schools



0 75 150 Feet

Lathrop School & Field



Rockford Public Schools



0 90 180 Feet

Lathrop School

2603 Clover Avenue



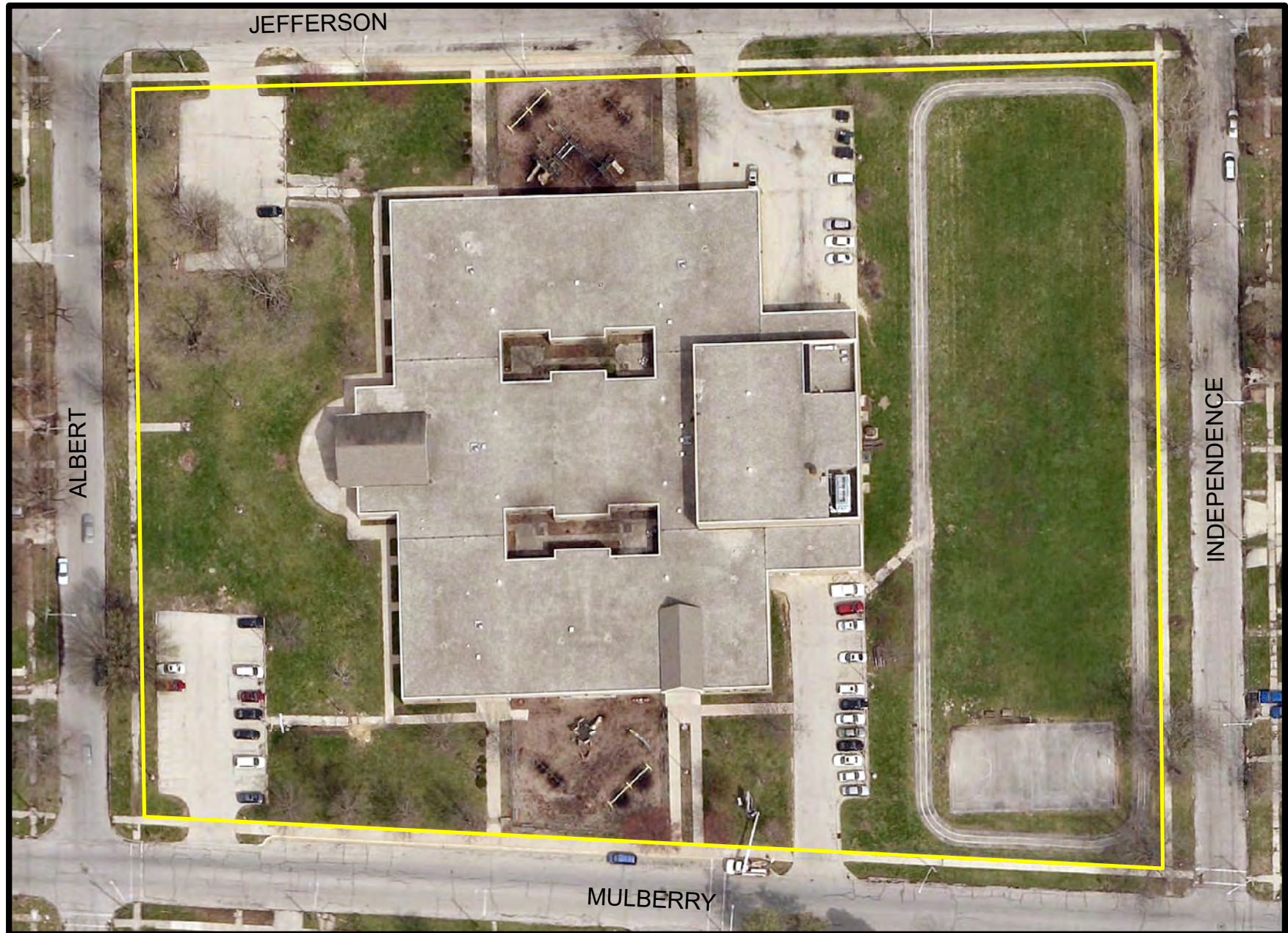
Rockford Public Schools



0 60 120 Feet

Lewis Lemon School

1993 Mulberry Street



Rockford Public Schools



0 40 80 160 Feet

Lincoln Middle School

1500 Charles Street



Rockford Public Schools



0 50 100 200 Feet

Marsh School

2012 Hawthorne Drive



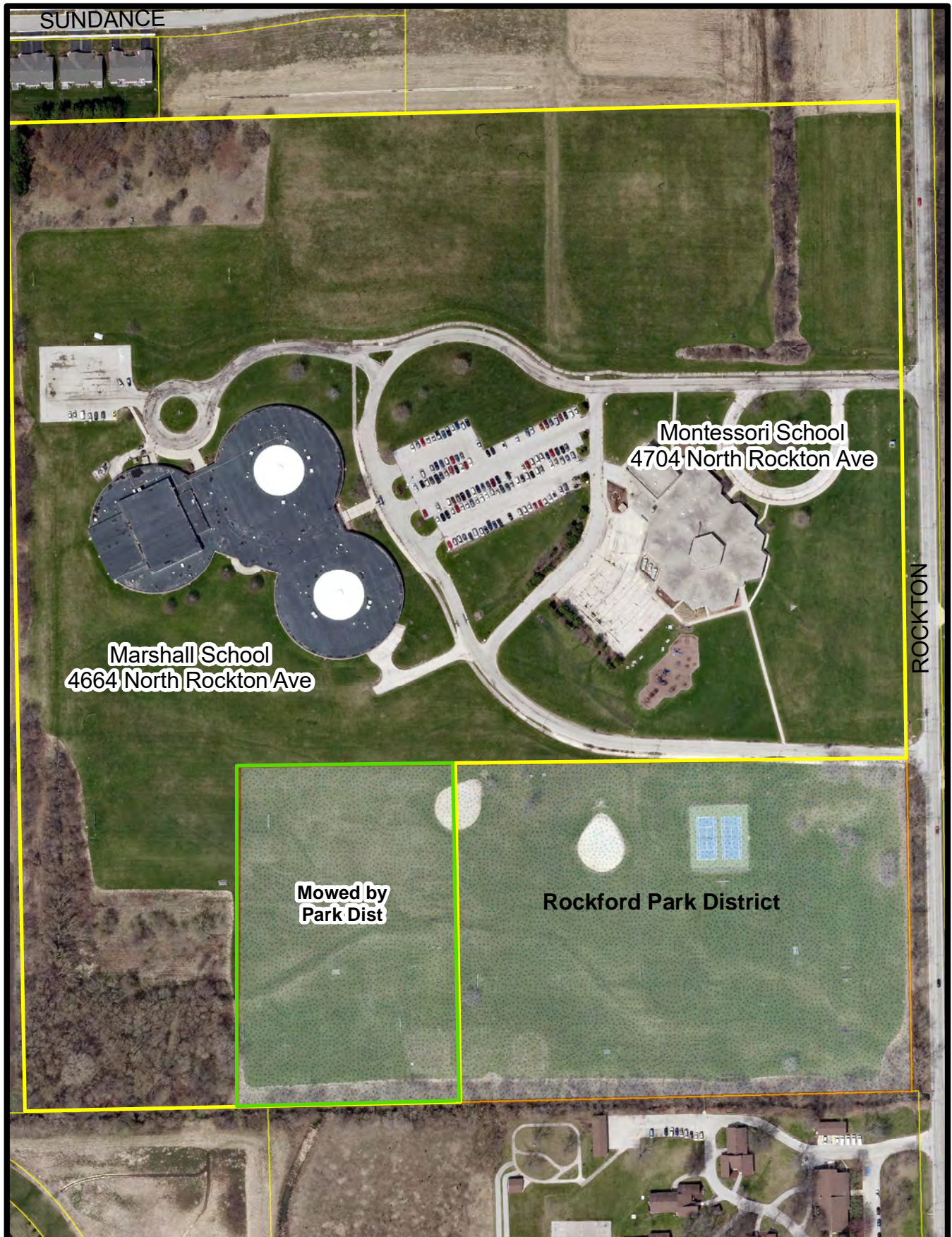
Rockford Public Schools



0 85 170 Feet

A horizontal scale bar with three segments. The first segment is labeled "0", the second "85", and the third "170 Feet".

Marshall - Montessori Schools



Nashold School

3303 20th Street



Rockford Public Schools



0 45 90 180 Feet

A horizontal scale bar with vertical tick marks. The numbers 0, 45, 90, and 180 are placed above the bar at regular intervals.

Nelson School

623 15th Street



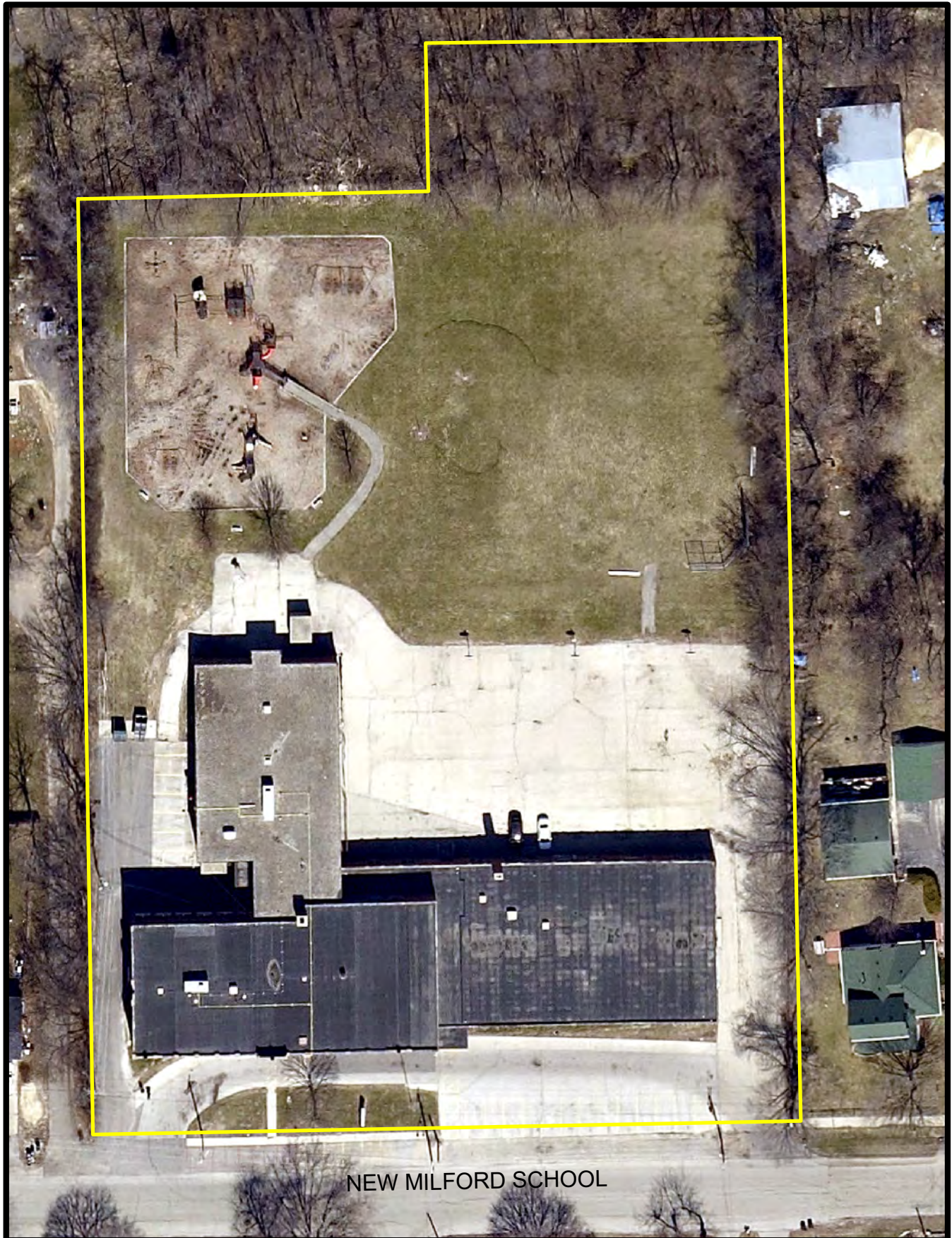
Rockford Public Schools



0 27 54 108 Feet

New Milford School

2128 New Milford Road



Rockford Public Schools



0 32 64 128 Feet

Operations Support Center

1907 Kishwaukee Street



Rockford Public Schools



0 40 80 160 Feet

Page Park School

5949 Safford Road



Rockford Public Schools

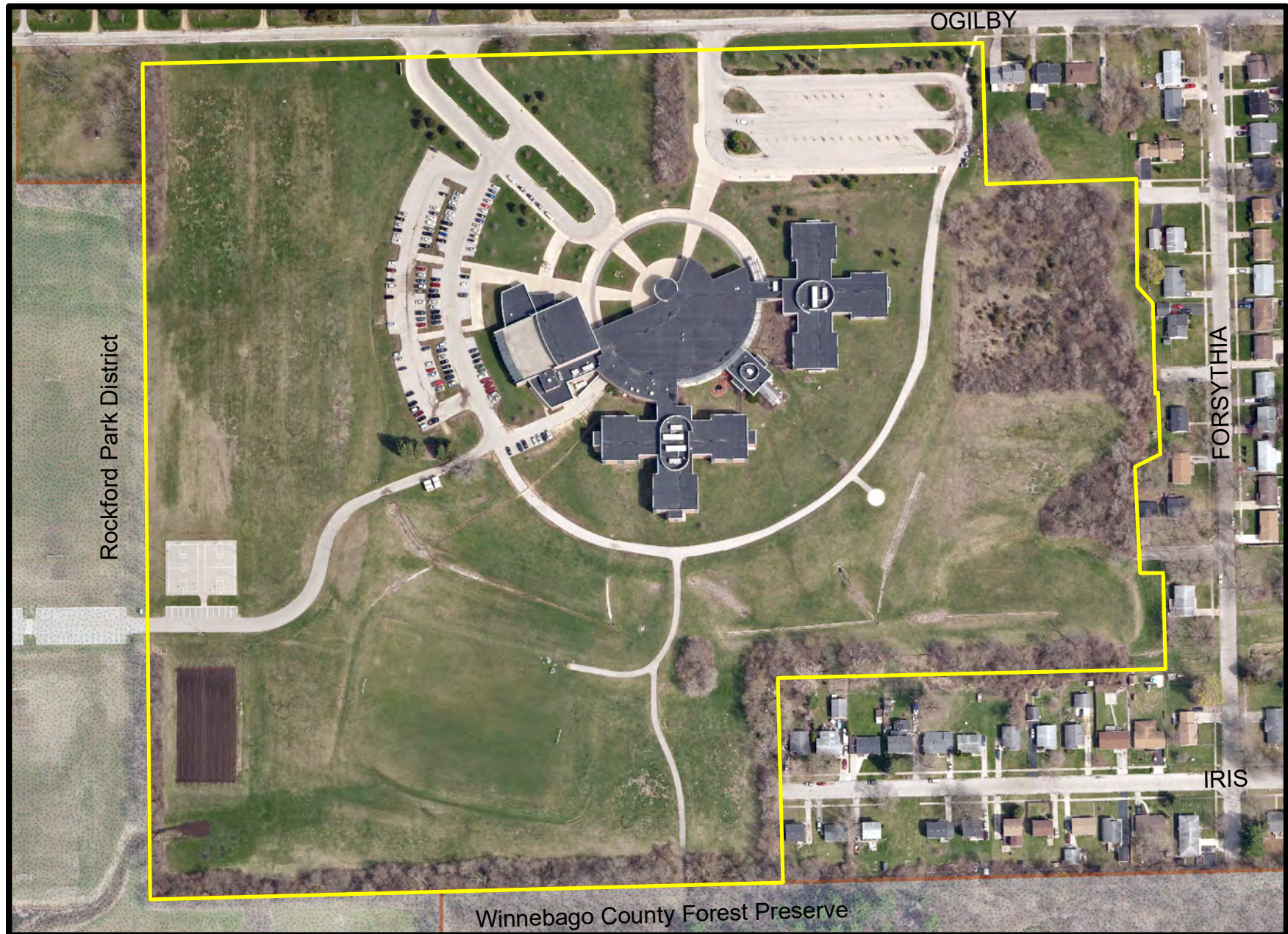


0 35 70 Feet

A horizontal scale bar with three segments. The first segment is labeled "0", the second "35", and the third "70 Feet".

Rockford Environmental Science Academy

1800 Ogilby Road



Rockford Public Schools



0 120 240 Feet

Riverdahl School

3520 Kishwaukee St.

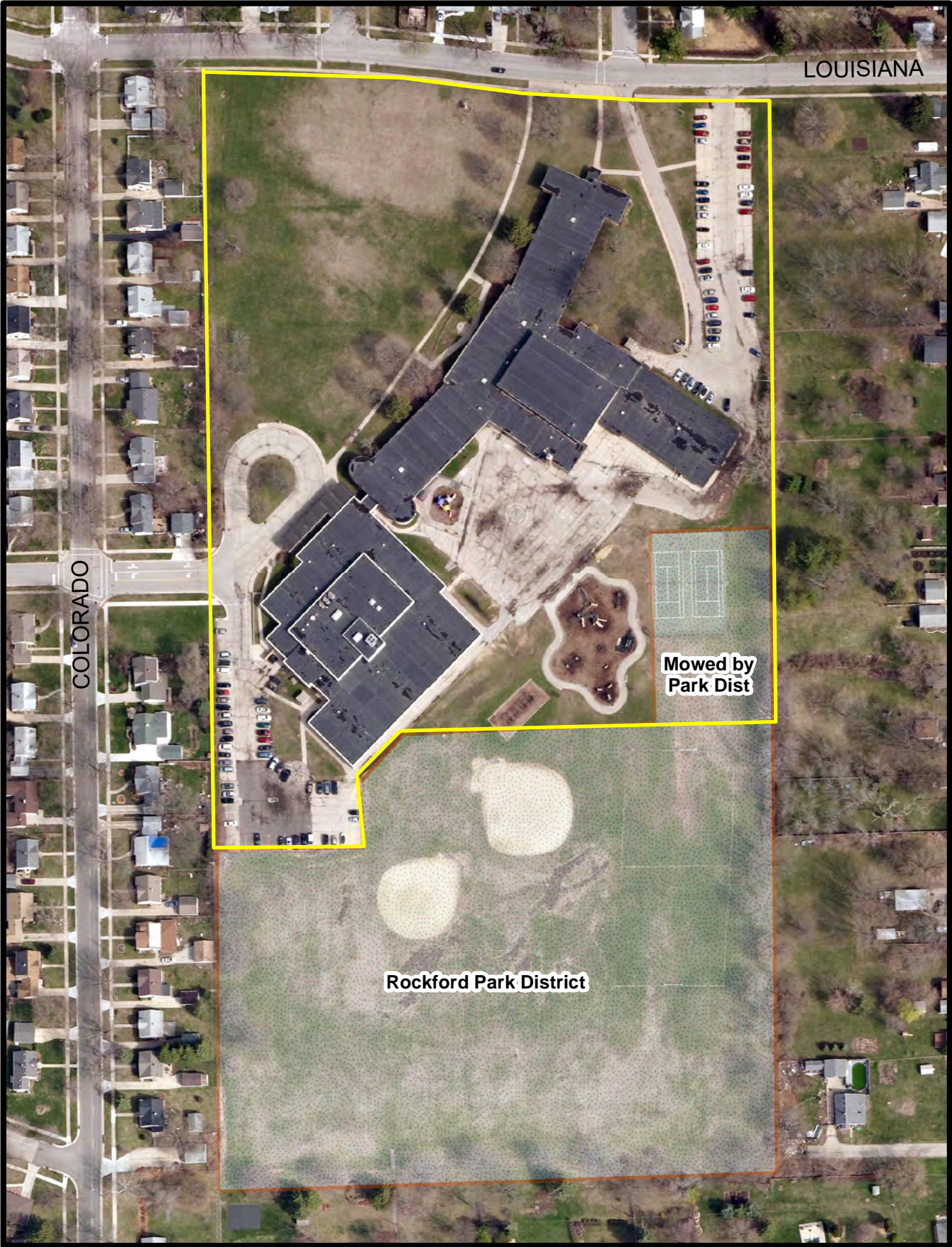


0 295 590
Feet

SCALE: 1:3,492

Rolling Green

3615 Westgate Parkway



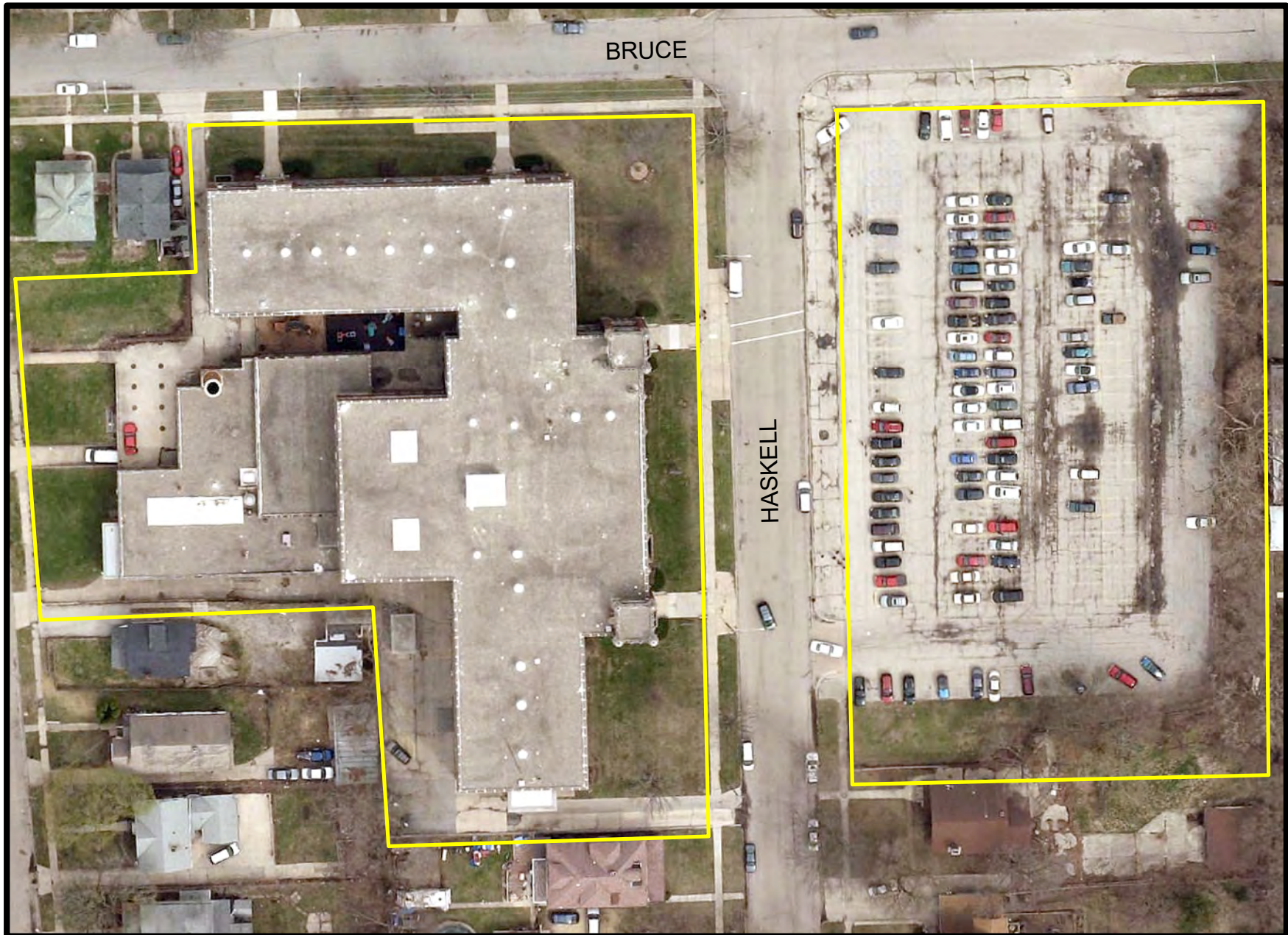
Mowed by
Park Dist

Rockford Park District



Roosevelt Community Ed Center

978 Haskell Avenue



Rockford Public Schools



0 37 74 148 Feet

Operations Support Center



Rockford Public Schools



0 15 30 Feet
| | |

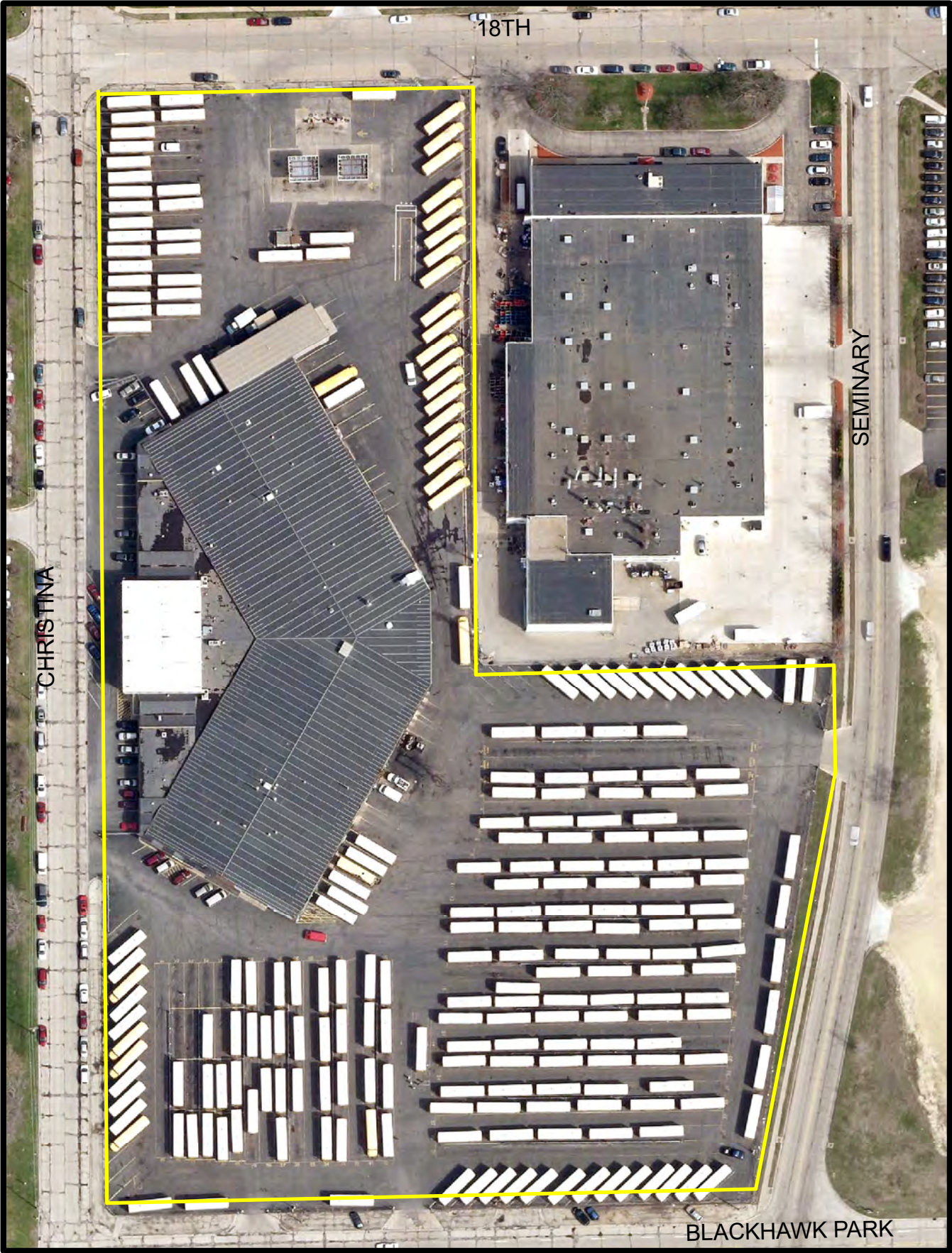
Spring Creek School

5222 Spring Creek Road



Sterling Holley Center

2000 Christina Street



Rockford Public Schools



0 55 110 Feet

Summerdale Early Childhood

3320 Glendale Avenue



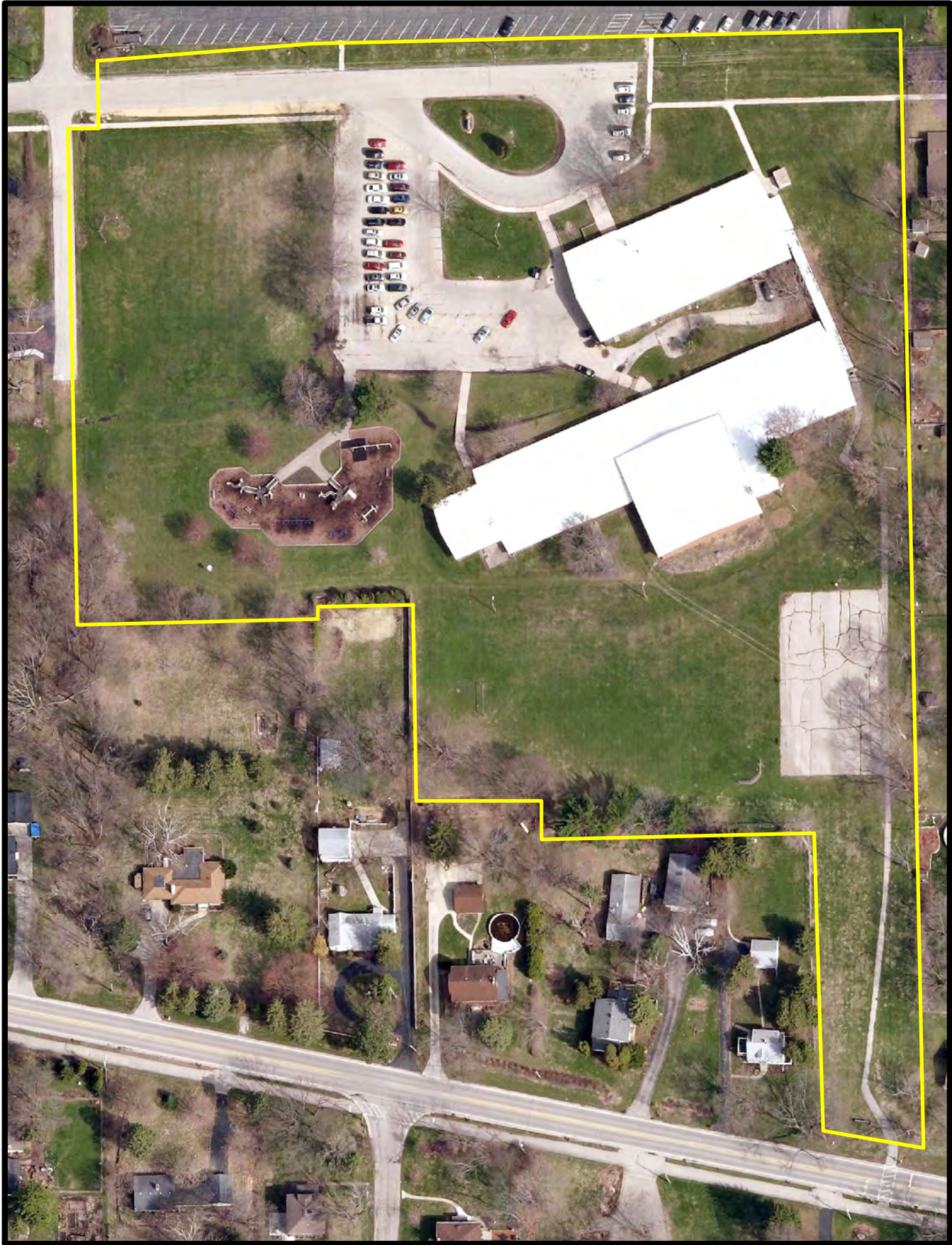
Rockford Public Schools



0 55 110 220 Feet

Thompson School

4949 Marion Avenue



Trainer Road Field

1510 Trainer Rd



Rockford Public Schools



0 55 110 Feet

A horizontal scale bar with three segments. The first segment is labeled "0", the second "55", and the third "110 Feet".

Walker School

1520 Post Avenue



Rockford Public Schools



0 37.5 75 150 Feet

A scale bar with four segments, each representing 37.5 feet, totaling 150 feet.

Washington School

1421 West Street



Rockford Public Schools



0 55 110 220 Feet

Welsh School

2100 Huffman Blvd



Rockford Public Schools



0 62.5 125 250 Feet

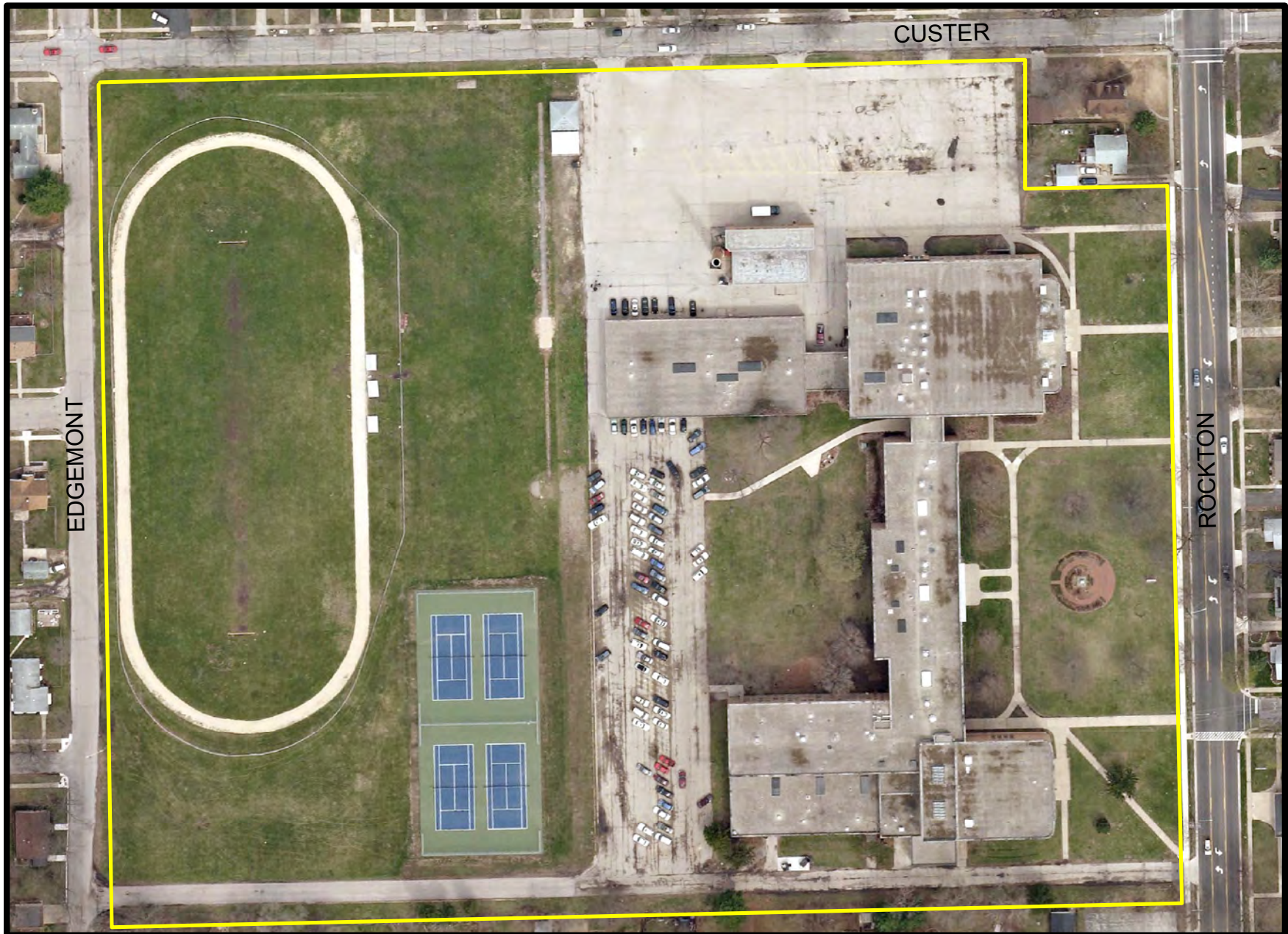
West View School

1720 Halsted Road



West Middle School

1900 North Rockton Ave



Rockford Public Schools



0 65 130 260 Feet

A horizontal scale bar with tick marks at 0, 65, 130, and 260 feet.

White Swan School

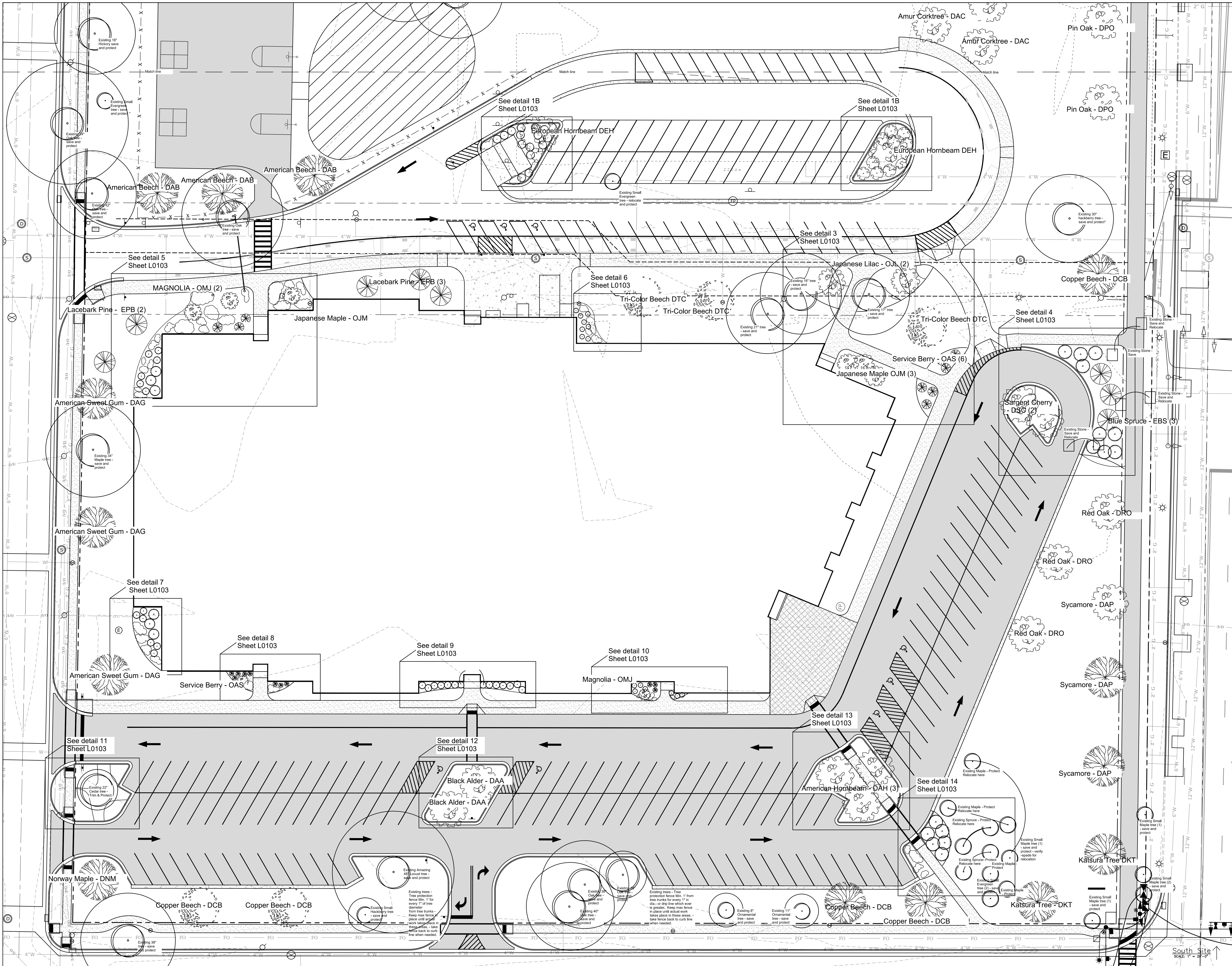
7550 Mill Road



Rockford Public Schools



0 37.5 75 150 Feet



ROCKFORD PUBLIC
SCHOOLS

SCHOOL B, ZONE 1

Rockford Public School District,
Architect
1907 Kishwaukee St.
Rockford, IL 61104
815-988-1015

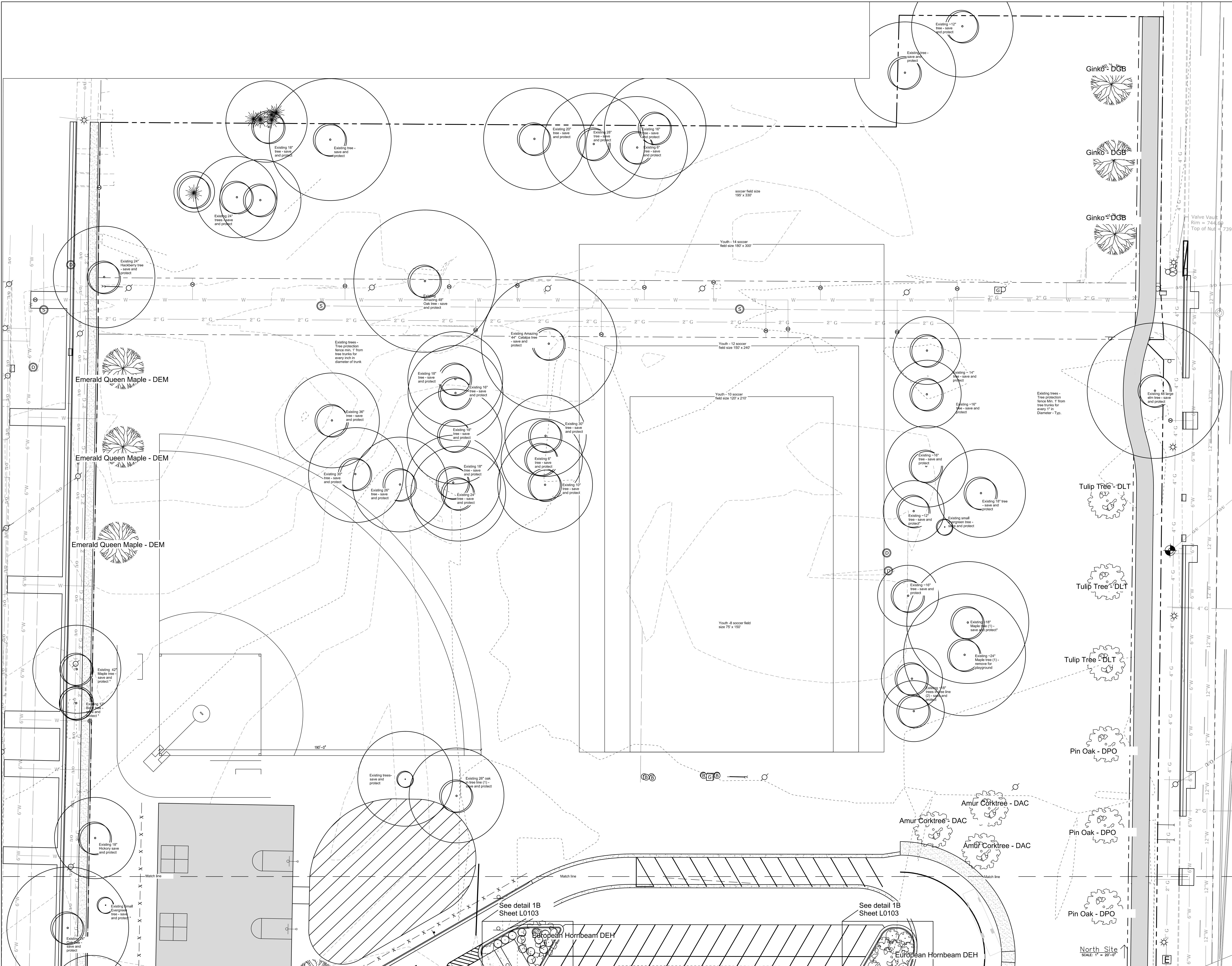
ISSUED FOR BID		03/01/2017
No.	Description	Date

Drawing Title:

LANDSCAPE PLAN

RPS 1801
Project No.: 005005.00
Checked by: AS

L0101



ROCKFORD PUBLIC
SCHOOLS
SCHOOL B, ZONE 1

Rockford Public School District,
Architect,
1907 Kishwaukee St.
Rockford, IL 61104
815-988-1015

ISSUED FOR BID 03/01/2017

No.	Description	Date
-----	-------------	------

Drawing Title:

LANDSCAPE PLAN

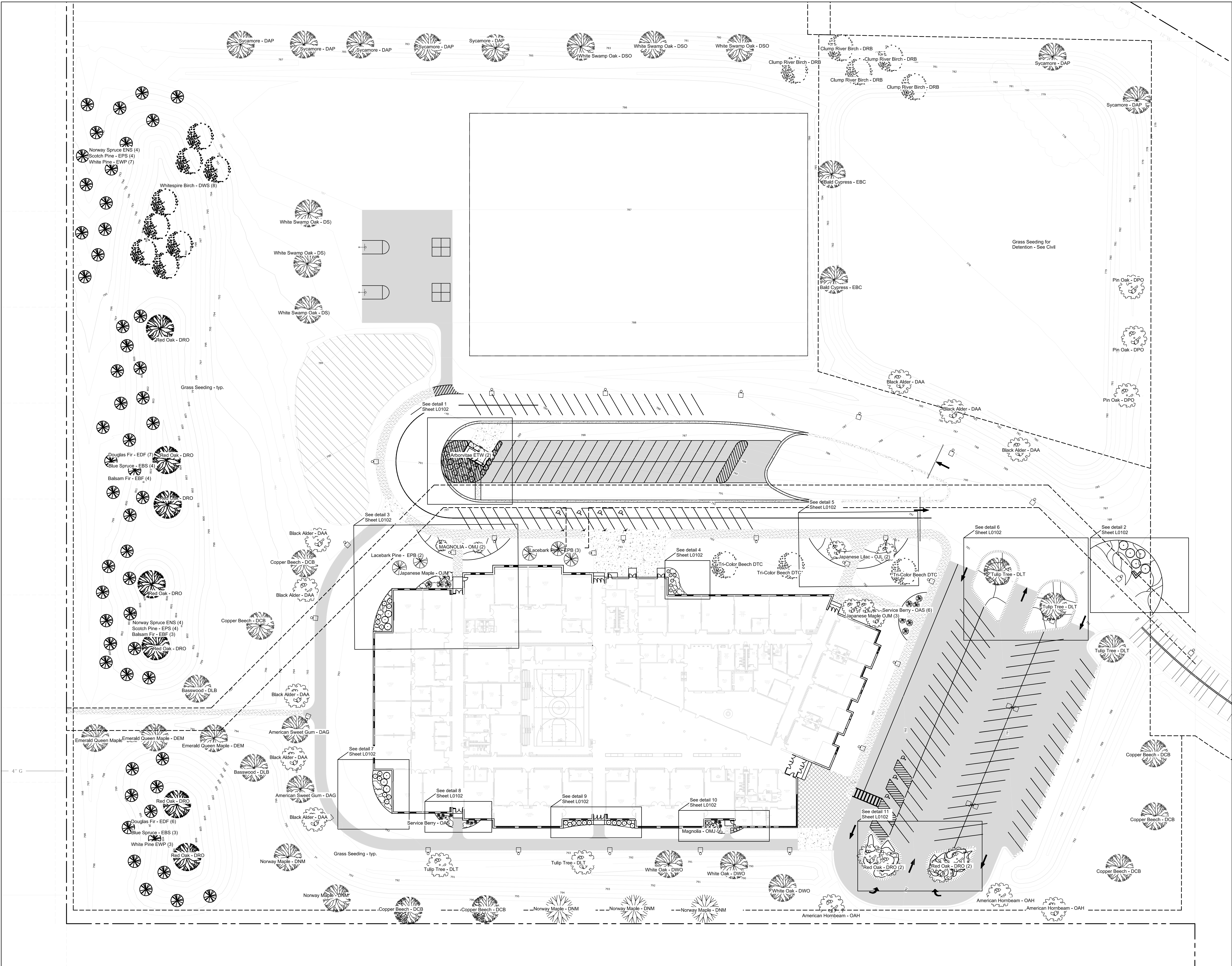
RPS 1801
Project No.: 005005.00

Checked by: AS

L0102

ROCKFORD PUBLIC
SCHOOLS
2 NEW PUBLIC
ELEMENTARY
SCHOOLS - SCHOOL A

Rockford Public School District,
Architect,
1807 Kishwaukee St.
Rockford, IL 61004
815-988-1015



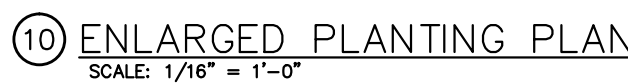
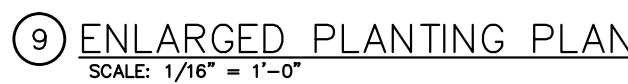
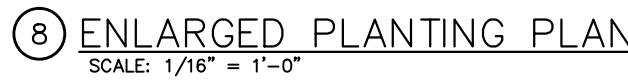
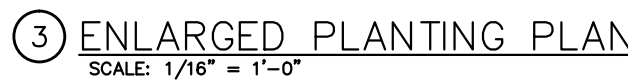
1	ISSUED FOR BID	01/04/2017
No.	Description	Date

Drawing Title:

LANDSCAPE PLAN

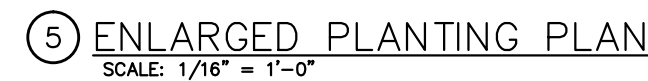
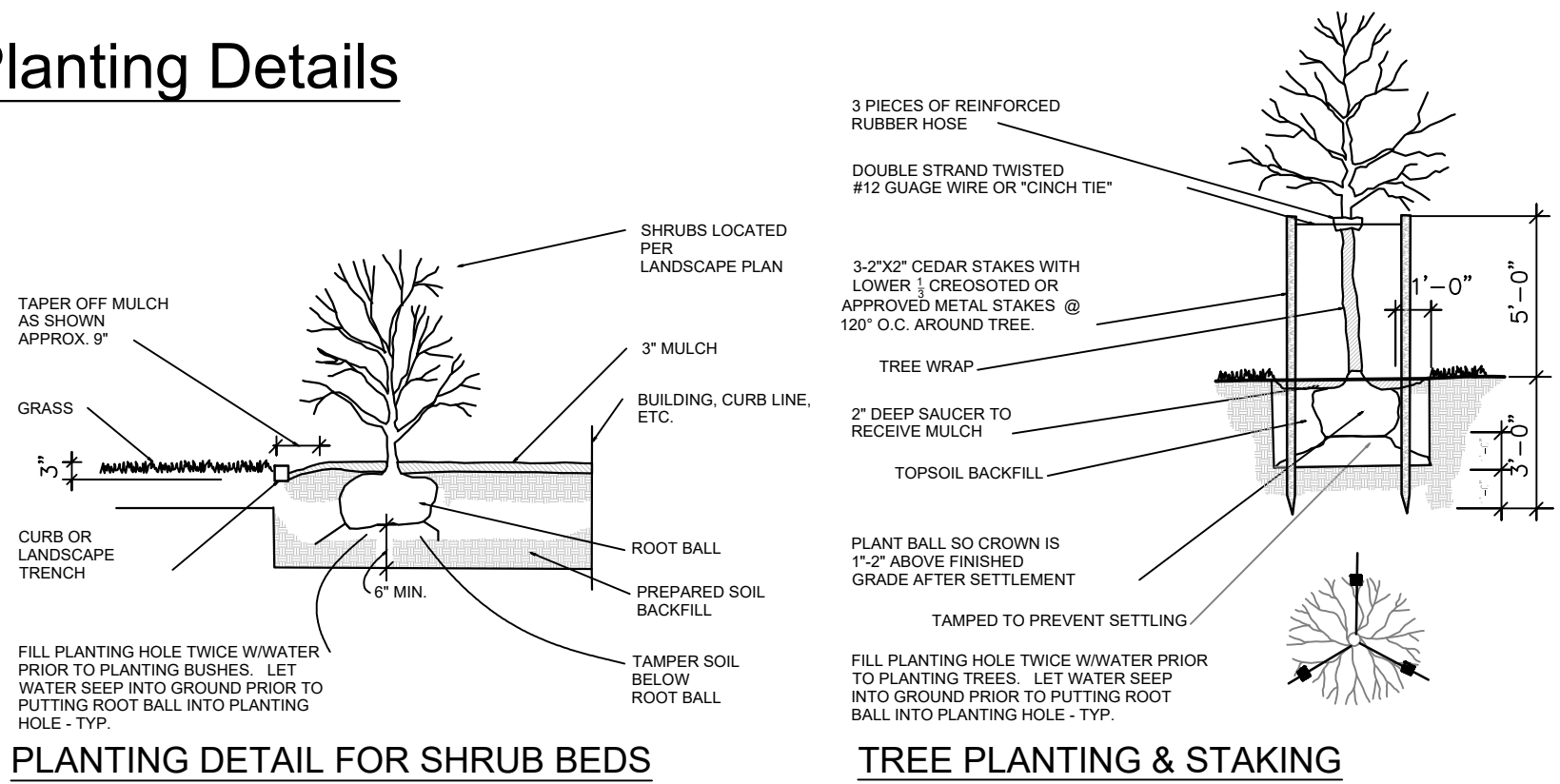
RPS 1701
Project No.: 005005.00 Checked by: AS

L0101



Note: This is a typical plant list - Use it for qty and sizes. Substitutions to be taken from this list. Substitute similar plant types - verify with architect and Village of Cherry Valley.

Planting Details



ALL PLANT MATERIAL TO BE INSTALLED IN ACCORDANCE WITH STANDARD "AMERICAN ASSOCIATION OF NURSERYMEN" PROCEDURES. CONTRACTOR TO SUPPLY NURSERY SOURCES FOR ALL PURCHASED MATERIAL.

CONTRACTOR TO VERIFY LOCATIONS OF ALL ON-SITE UTILITIES. CALL J.U.L.I.E. AT (1-800-892-0123) FOR ELECTRIC, GAS, TELEPHONE, CABLE AND PIPELINE. CONTRACTOR TO COORDINATE ALL RELATED ACTIVITIES WITH OTHER TRADES ON THE JOB AND SHALL REPORT ANY UNACCEPTABLE JOB CONDITIONS TO OWNER'S REPRESENTATIVE PRIOR TO COMMENCING WORK.

LANDSCAPE CONTRACTOR SHALL VISIT SITE, AND INSPECT EXISTING CONDITIONS AND REVIEW PROPOSED PLANTING AND RELATED WORK. IN CASE OF DISCREPANCY BETWEEN PLAN AND PLANT LIST, PLAN SHALL GOVERN QUANTITIES.

ALL PLANT MATERIAL TO RECEIVE 3" DEPTH OF SHREDDED HARDWOOD MULCH. EVERGREEN TREES TO RECEIVE MULCH TO DRIP LINE. ALL DECIDUOUS TREES SHALL RECEIVE A 3' DIA. CIRCLE OF MULCH.

ALL LAWN AREAS TO BE SEEDED AND SPRAYED WITH HYDRO-MULCH AT A RATE OF 1.5 TONS PER ACRE. LAWN TO BE A COMBINATION OF BLUEGRASS, PERENNIAL RYE AND RED FESCUE. CONTRACTOR TO SUBMIT SEED TYPES, RATES AND MIX PRIOR TO SEEDING. ALL LAWN AREAS SHOULD BE FERTILIZED AT INSTALLATION WITH 26-26 ANALYSIS AT A RATE OF 6 LB. PER 1,000 S.F.. SECOND APPLICATION TO BE 15-40-5, APPLIED AT A RATE OF 6 LB. PER 1,000 LB. PER S.F. AFTER FIRST CUTTING. ACCEPTANCE AND GUARANTEE NOTES TO APPLY TO ALL SEEDED AREAS.

ALL TREES TO BE SET ON UNDISTURBED GROUND AND HOLE IF POSSIBLE.

PROVIDE MIN. 12" OF "GOOD" TOPSOIL IN PLANTING AREAS.

ACCEPTANCE OF GRADING AND SEEDING SHALL BE BY SITE REPRESENTATIVE AND/OR OWNER, VILLAGE OF CHERRY VALLEY TO HAVE FINAL APPROVAL. THE CONTRACTOR SHALL ASSUME LAWN MAINTENANCE RESPONSIBILITY FOR A MINIMUM OF THIRTY(30) DAYS OR UNTIL SECOND CUTTING, WHICHEVER IS LONGER. MAINTENANCE SHALL INCLUDE WATERING, WEEDING, REPLACEMENT OF WASH-OFFS AND OTHER OPERATIONS REQUIRED TO MAINTAIN SOD AND PLANTS IN THRIVING CONDITION. THE OWNER SHALL ASSUME LAWN MAINTENANCE UPON FINAL ACCEPTANCE BY SITE REPRESENTATIVE.

ALL TREES SHOULD HAVE A RELATIVELY STRAIGHT TRUNK, WELL DEVELOPED LEADERS AND TOPS AND ROOTS CHARACTERISTICS OF THE SPECIES, CULTIVARS, AND VARIETY. ALL TREES MUST BE FREE OF INSECTS, DISEASES, MECHANICAL INJURIES, AND OTHER OBJECTIONABLE FEATURES AT THE TIME OF PLANTING.

ALL TREES SHALL BE A MINIMUM OF 1 1/2" IN HEIGHT DIAMETER, SIX INCHES ABOVE THE GROUND LEVEL, AND AT LEAST TEN FEET IN HEIGHT, WHEN PLANTED.

ALL TREES SHALL BE STAKED AT TIME OF PLANTING WITH POLES HAVING A DIAMETER OF NOT LESS THAN 1 1/2", OR STAKES MEASURING NOT LESS THAN 1 1/2" ON EACH SIDE.