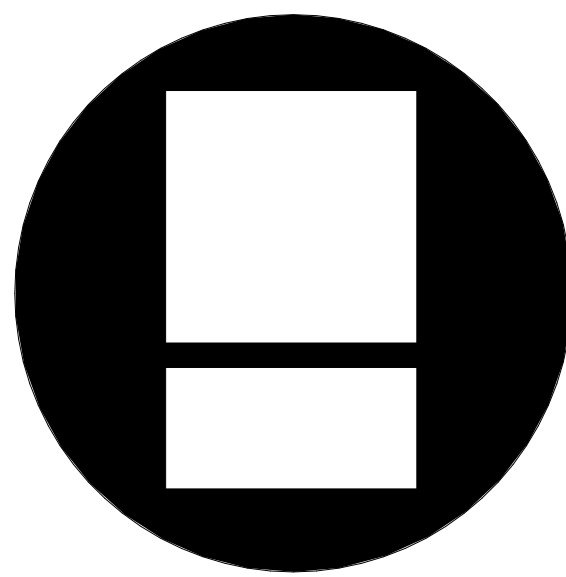


WEST MIDDLE SCHOOL ROOF REPLACEMENT - IFB#23-18

RPS DISTRICT 205 - PROJECT #2239

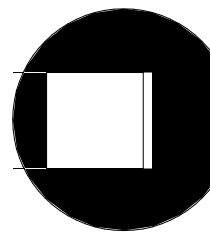
1 900 N ROCKTON AVE,
ROCKFORD IL 61103

ISSUED FOR BIDDING AND CONSTRUCTION OCTOBER 25TH, 2022



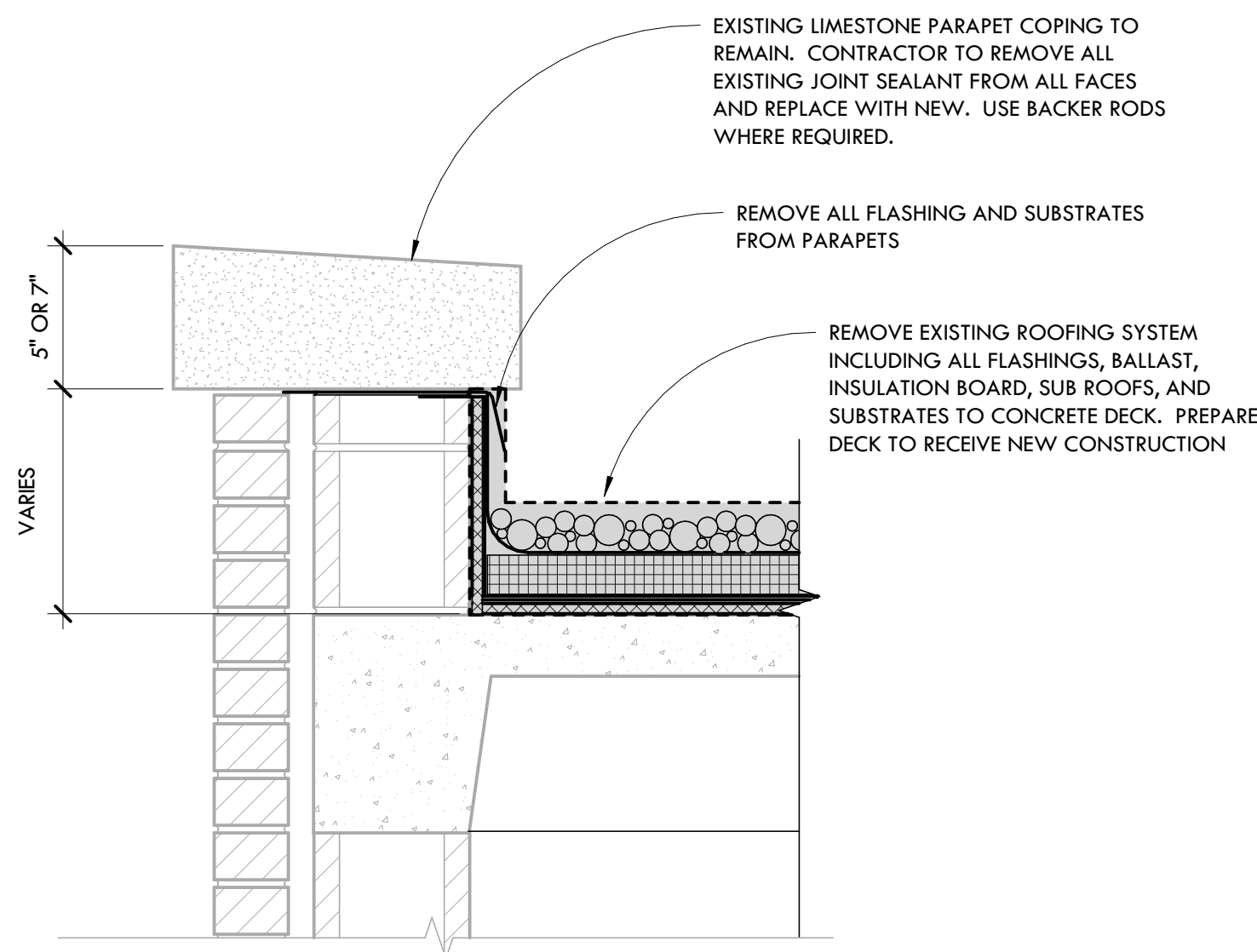
Larson & Darby Group
Architecture Engineering Interiors

SHEET INDEX			SEALS	CODE SUMMARY	DESIGN TEAM	SITE LOCATION MAP
<div><div>SHEET #</div><div>SHEET NAME</div><div>CURRENT RE-ISSUE DATE</div></div> <div><div>GENERAL</div><div>G0.0 COVER SHEET</div></div> <div><div>ARCHITECTURAL</div><div>A1.3 ROOF PLAN</div><div>A1.4 PARAPET SECTIONS & ROOFING DETAILS</div><div>A1.5 TYPICAL ROOF AND LADDER DETAILS</div><div>A1.6 TYPICAL ROOF DETAILS</div></div>			<div>Larson & Darby, Inc. Design Firm Registration Number: 184-000280 (1-012449) (62-031399)</div> <div><div><div>STATE OF ILLINOIS</div><div>ANDREW A. MACKLIN</div><div>001-021564</div><div>LICENSED ARCHITECT</div></div><div>EXPIRES: 11-30-2022</div><div>ANDREW A. MACKLIN</div><div>LICENSED ARCHITECT</div><div>DATE</div></div> <div>COMPLIANCE STATEMENT - I HAVE PREPARED, OR CAUSED TO BE PREPARED UNDER MY DIRECT SUPERVISION, THE ATTACHED PLANS AND SPECIFICATIONS AND STATE THAT, TO THE BEST OF MY KNOWLEDGE AND BELIEF AND TO THE EXTENT OF MY CONTRACTUAL OBLIGATION, THEY ARE IN COMPLIANCE WITH THE ENVIRONMENTAL BARRIERS ACT (410 ILCS 25) AND THE ILLINOIS ACCESSIBILITY CODE, (71 IL ADM. CODE 400). ADA HAS NEITHER A SUBMITTAL REVIEW, NOR AN INSPECTION PROCESS TO INTERPRET DISABILITY LAWS. AS PART OF THE CIVIL RIGHTS ACT AND NOT A CODE, ADA COMPLIANCE CAN NOT BE CERTIFIED. TO THE BEST OF MY ABILITY AND KNOWLEDGE, I HAVE INTERPRETED AND ATTEMPTED TO COMPLY WITH ALL ADA STANDARDS, 42 U.S.C. SECTION 12101 ET SEQ. THIS IS PERCEIVED COMPLIANCE, NOT CERTIFICATION.</div>	<div>BUILDING CODES: (WITH LOCAL AMENDMENTS) 2015 INTERNATIONAL BUILDING CODE 2010 ADA 2018 ILLINOIS ACCESSIBILITY CODE NFPA 101 2014 ILLINOIS PLUMBING CODE 2015 INTERNATIONAL FUEL GAS CODE 2015 INTERNATIONAL MECHANICAL CODE 2018 INTERNATIONAL ENERGY CONSERVATION CODE</div> <div>PROJECT DATA:</div>	<div>CIVIL NA</div> <div>ARCHITECT LARSON & DARBY GROUP 4949 HARRISON AVE. SUITE 100 ROCKFORD, ILLINOIS 61108 815.484.0739</div> <div>INTERIOR DESIGN NA</div> <div>STRUCTURAL LARSON & DARBY GROUP 4949 HARRISON AVE. SUITE 100 ROCKFORD, ILLINOIS 61108 815.484.0739</div> <div>PLUMBING NA</div> <div>MECHANICAL NA</div> <div>ELECTRICAL NA</div>	

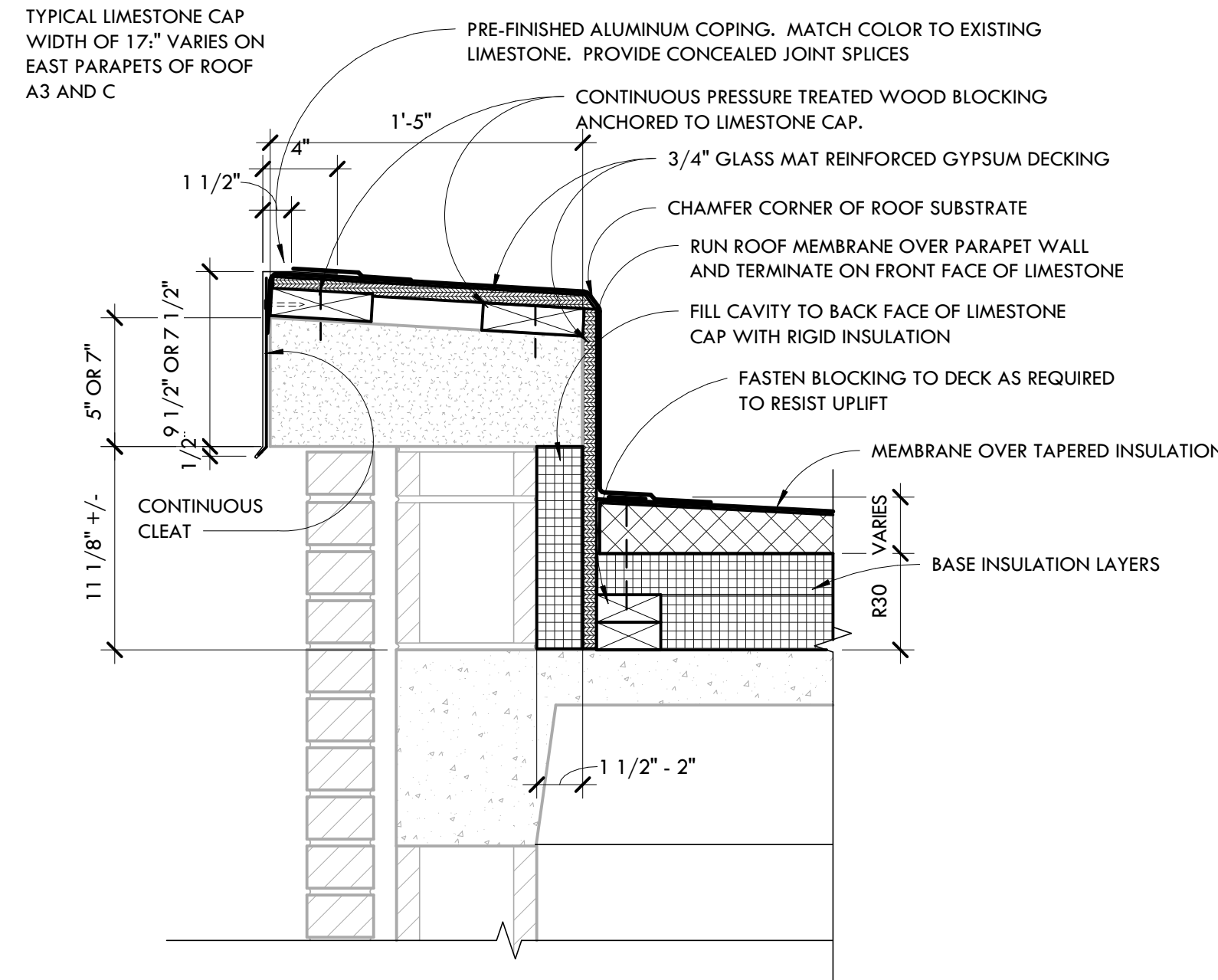


RE-ISSUED FOR		DATE
DESCRIPTION		
#		

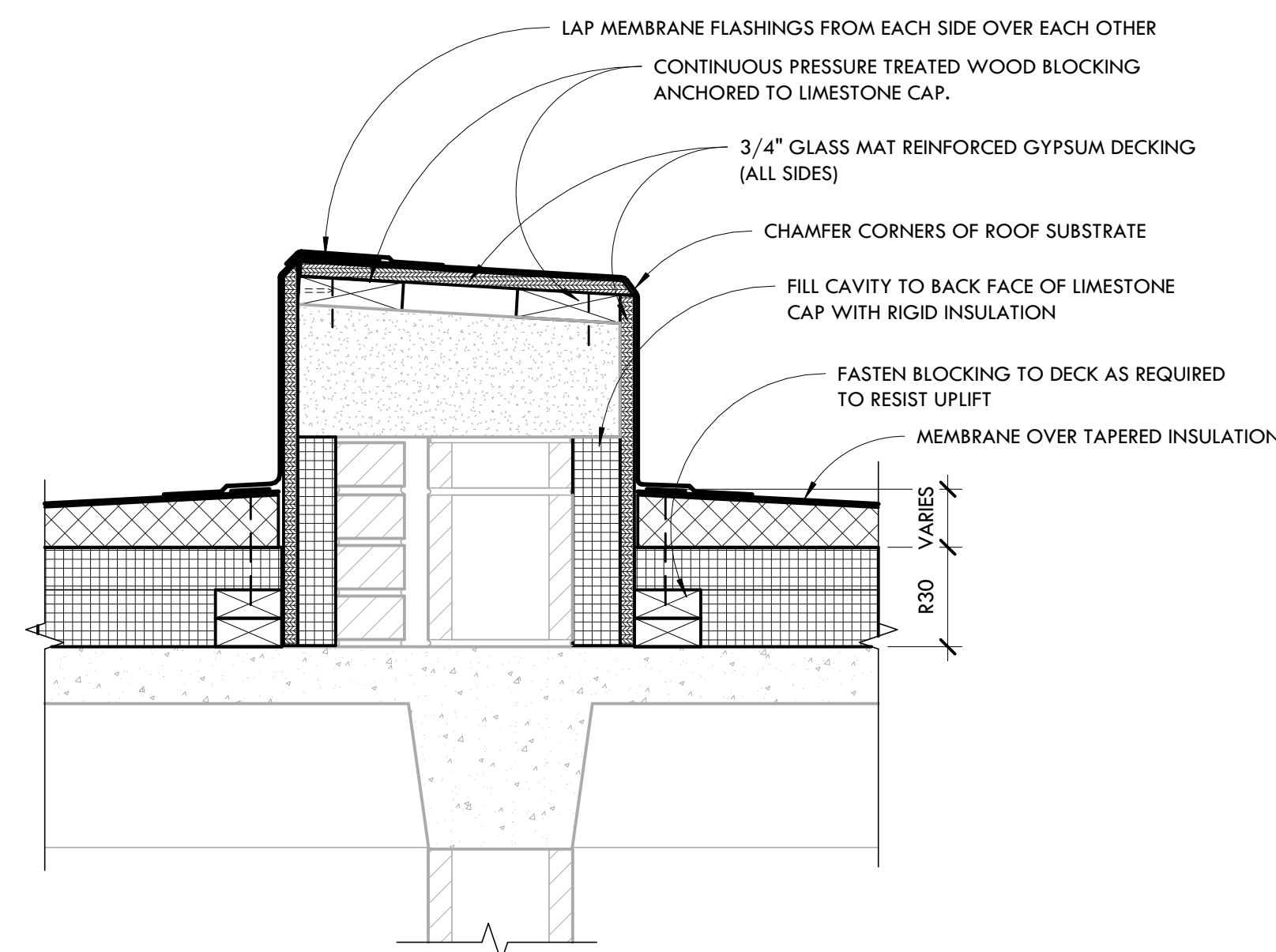
DATE: 10-25-22	PROJECT NUMBER: 31029-03	SHEET NUMBER: G0.0
----------------	--------------------------	--------------------



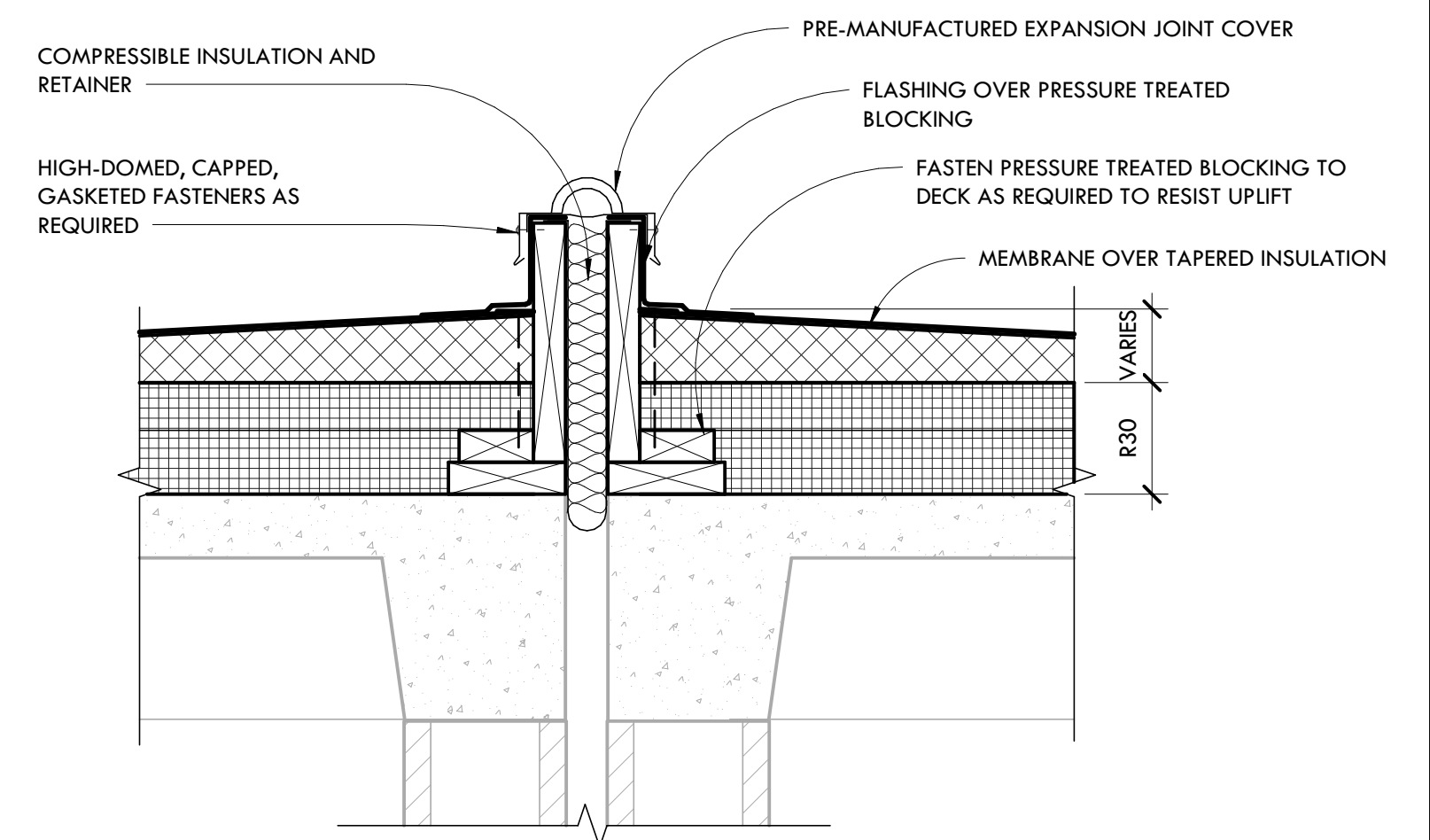
1 EXISTING PARAPET CONDITION
SCALE: 1 1/2" = 1'-0"



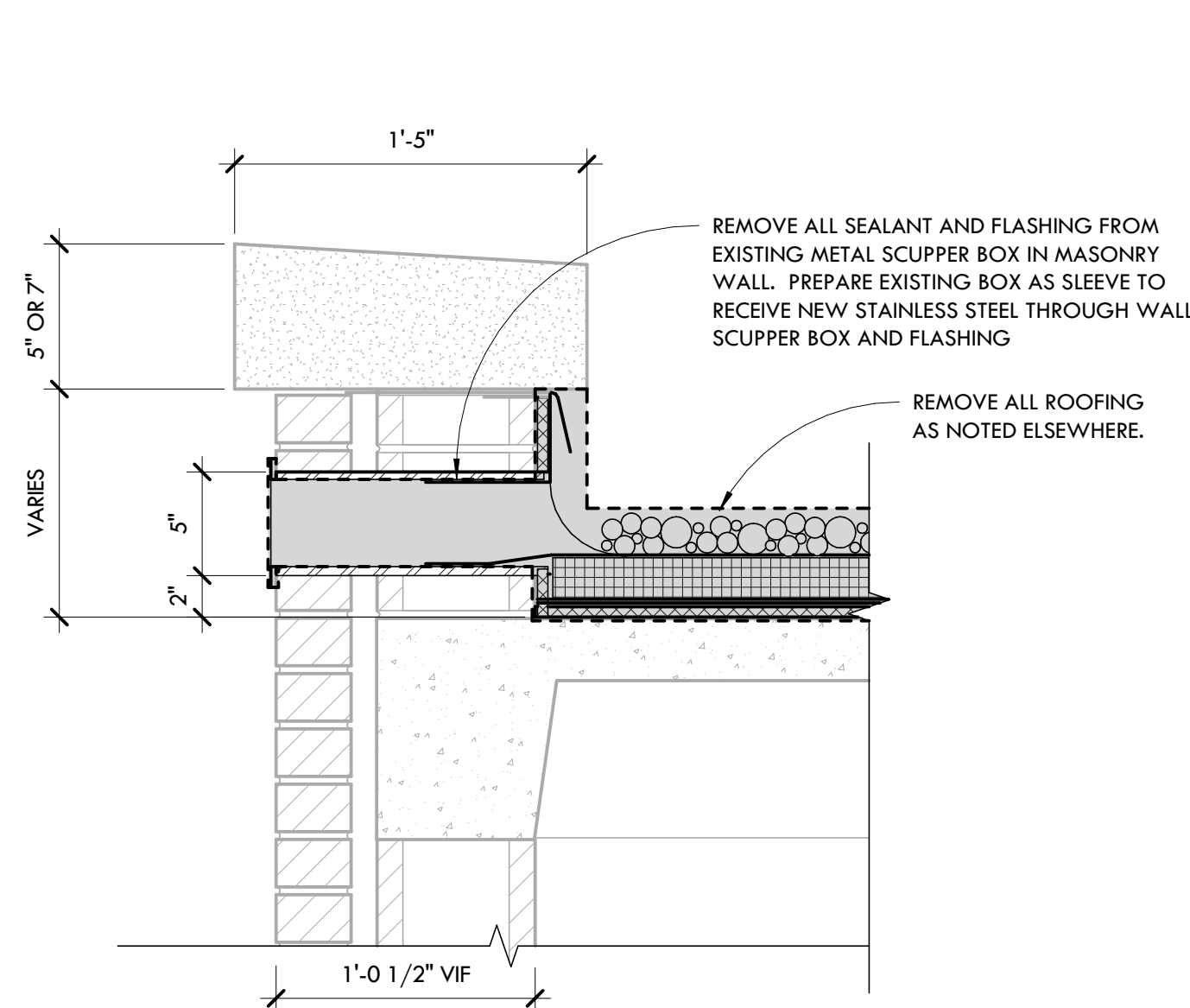
2 TYPICAL PARAPET RE-ROOF
SCALE: 1 1/2" = 1'-0"



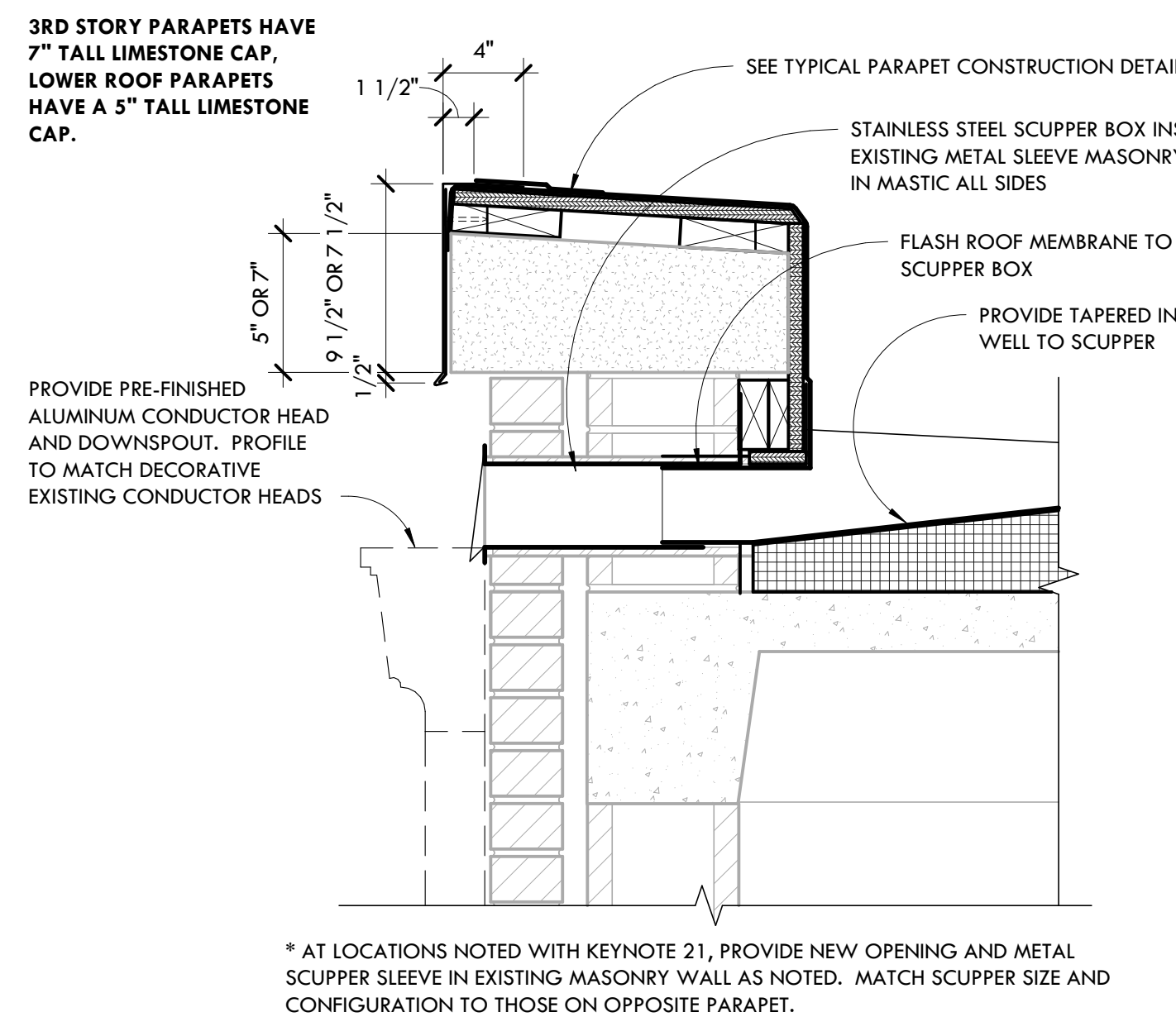
3 RE-ROOF OVER INTERIOR PARAPET
SCALE: 1 1/2" = 1'-0"



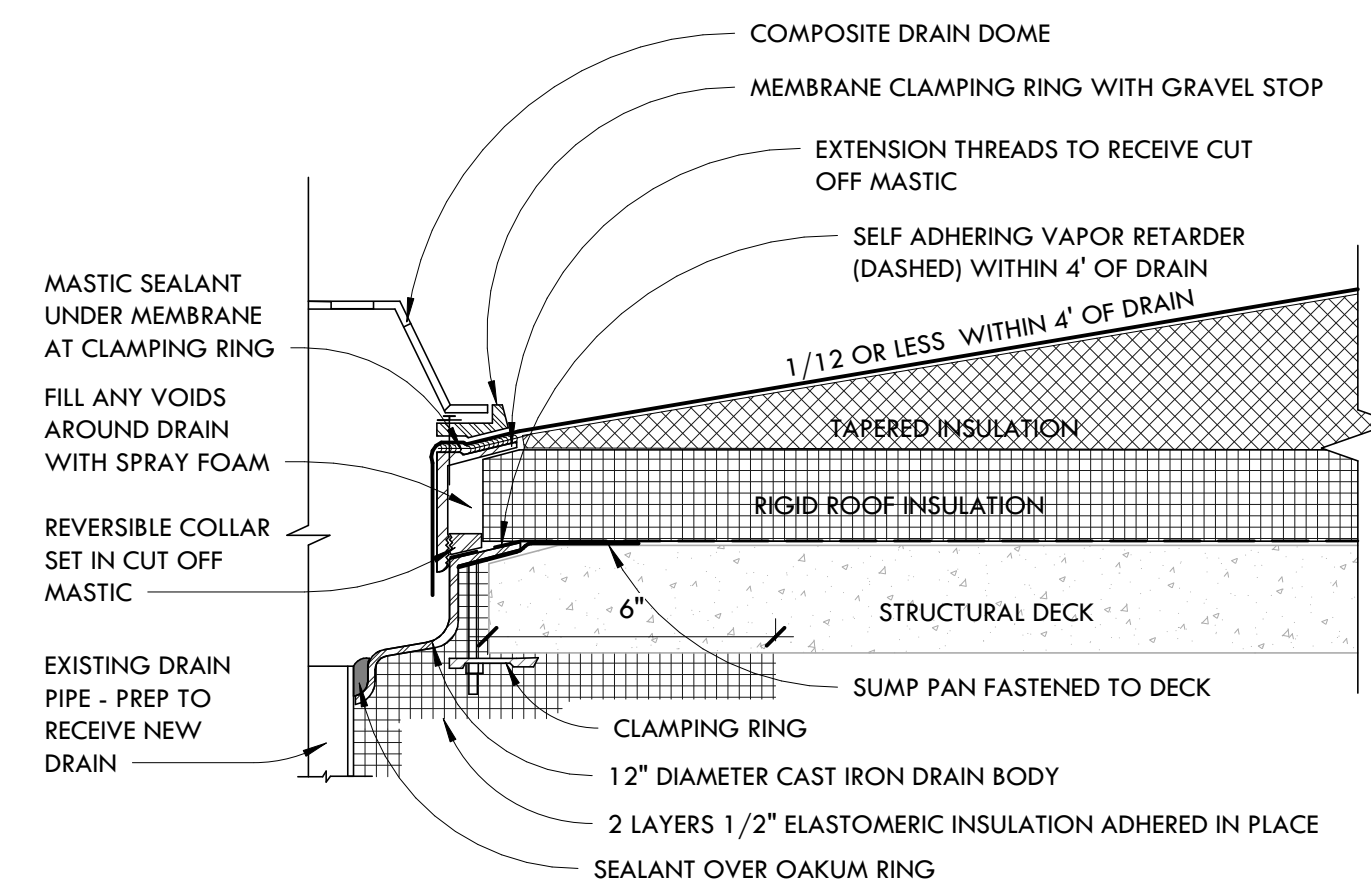
4 TYPICAL EXPANSION JOINT DETAIL
SCALE: 1 1/2" = 1'-0"



5 EXISTING PARAPET SCUPPER CONDITION
SCALE: 1 1/2" = 1'-0"

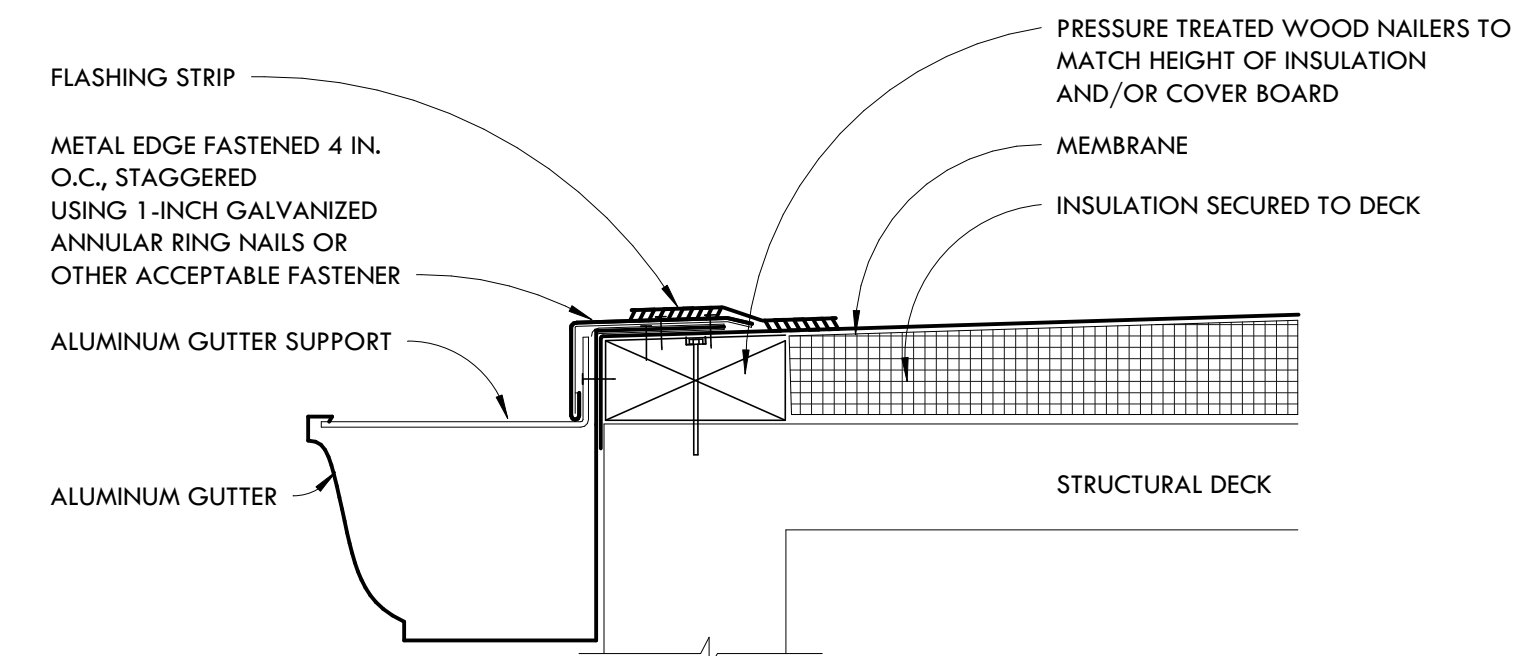


6 TYPICAL PARAPET RE-ROOF AT SCUPPER
SCALE: 1 1/2" = 1'-0"



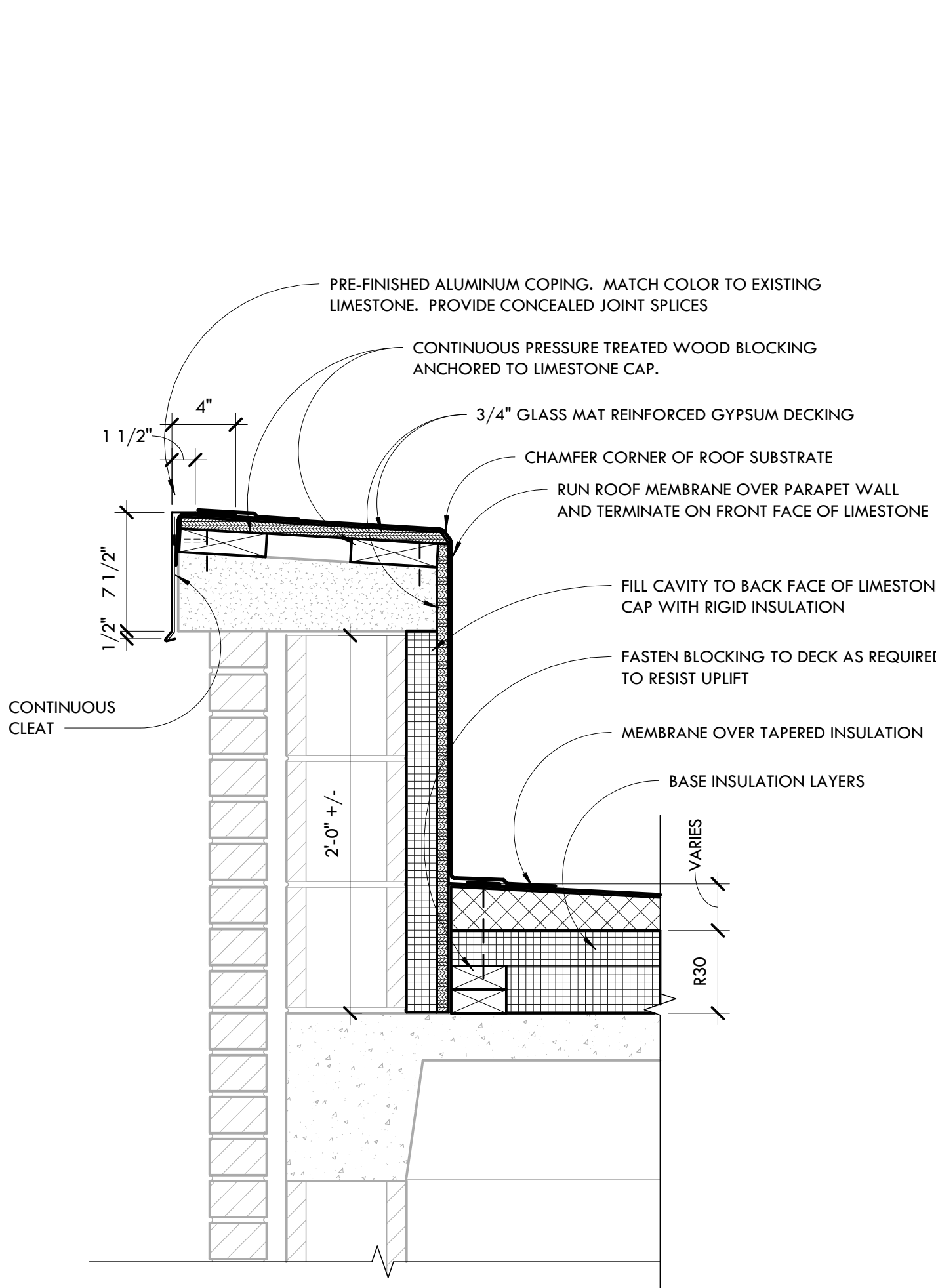
- NOTES:
- 1) PROVIDE DRAIN BOWL, CLAMPING RING AND DRAIN ACCESSORIES.
 - 2) R30 INSULATION THICKNESS ACHIEVED WITHIN 4\"/>

7 TYPICAL ROOF DRAIN DETAIL
SCALE: 3\"/>

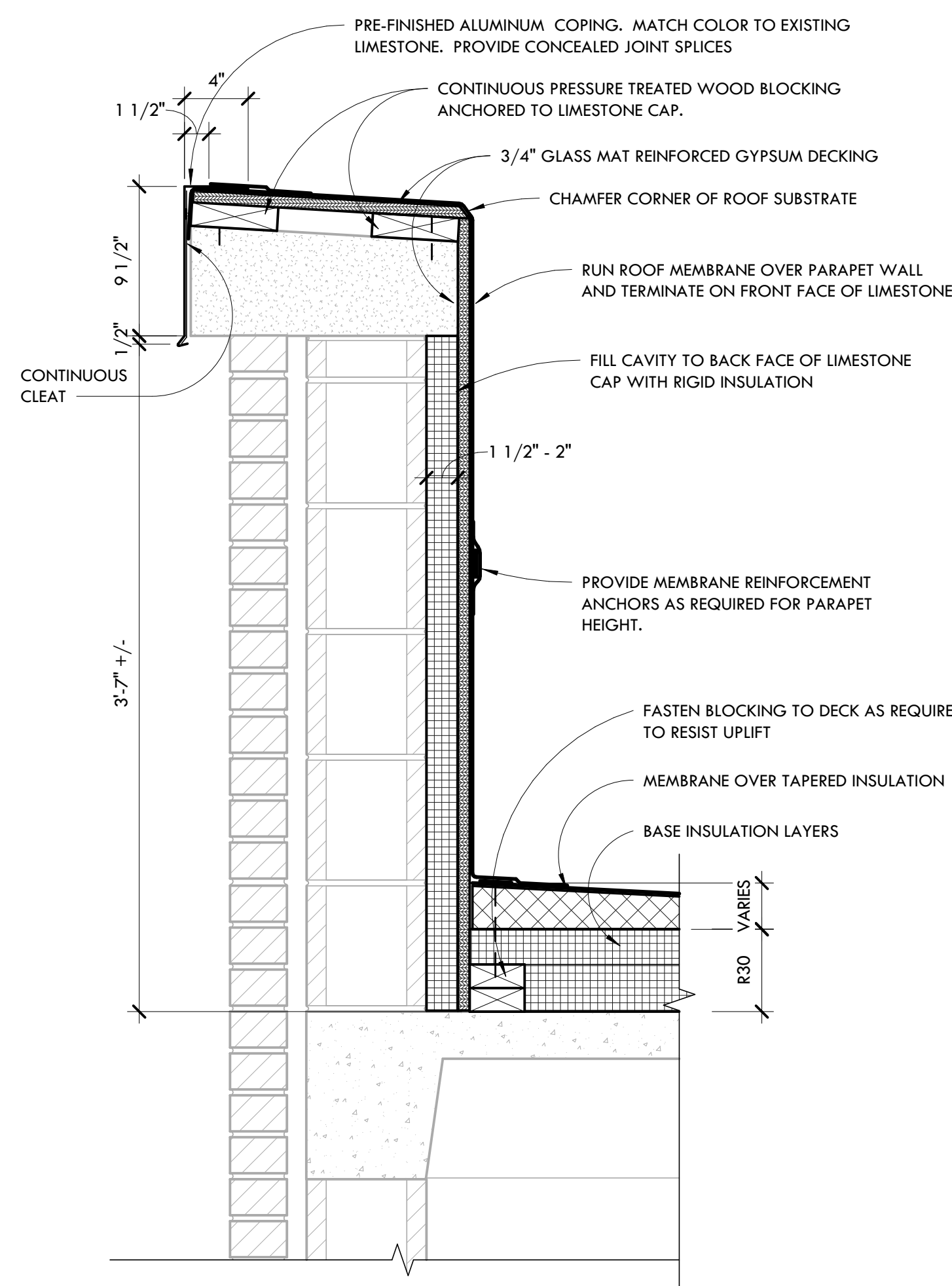


- NOTES:
- 1) NAILERS SHALL BE SECURELY ANCHORED TO THE DECK TO RESIST A MINIMUM FORCE OF 300 POUNDS PER LINEAR FOOT. FOLLOW FACTORY MUTUAL LOSS PREVENTION DATA SHEET 1-49 AND ENGINEERS SPECIFIED LOADING.
 - 2) THE THICKNESS OF THE NAILER SHALL MATCH THE HEIGHT OF THE INSULATION OR SURFACE TO WHICH THE MEMBRANE IS TO BE APPLIED
 - 3) POSITION THE MEMBRANE (NON-FELTED) OVER THE ROOF EDGE AND DOWN OUTSIDE FACE OF WALL, COVERING TREATED WOOD NAILER(S) COMPLETELY.

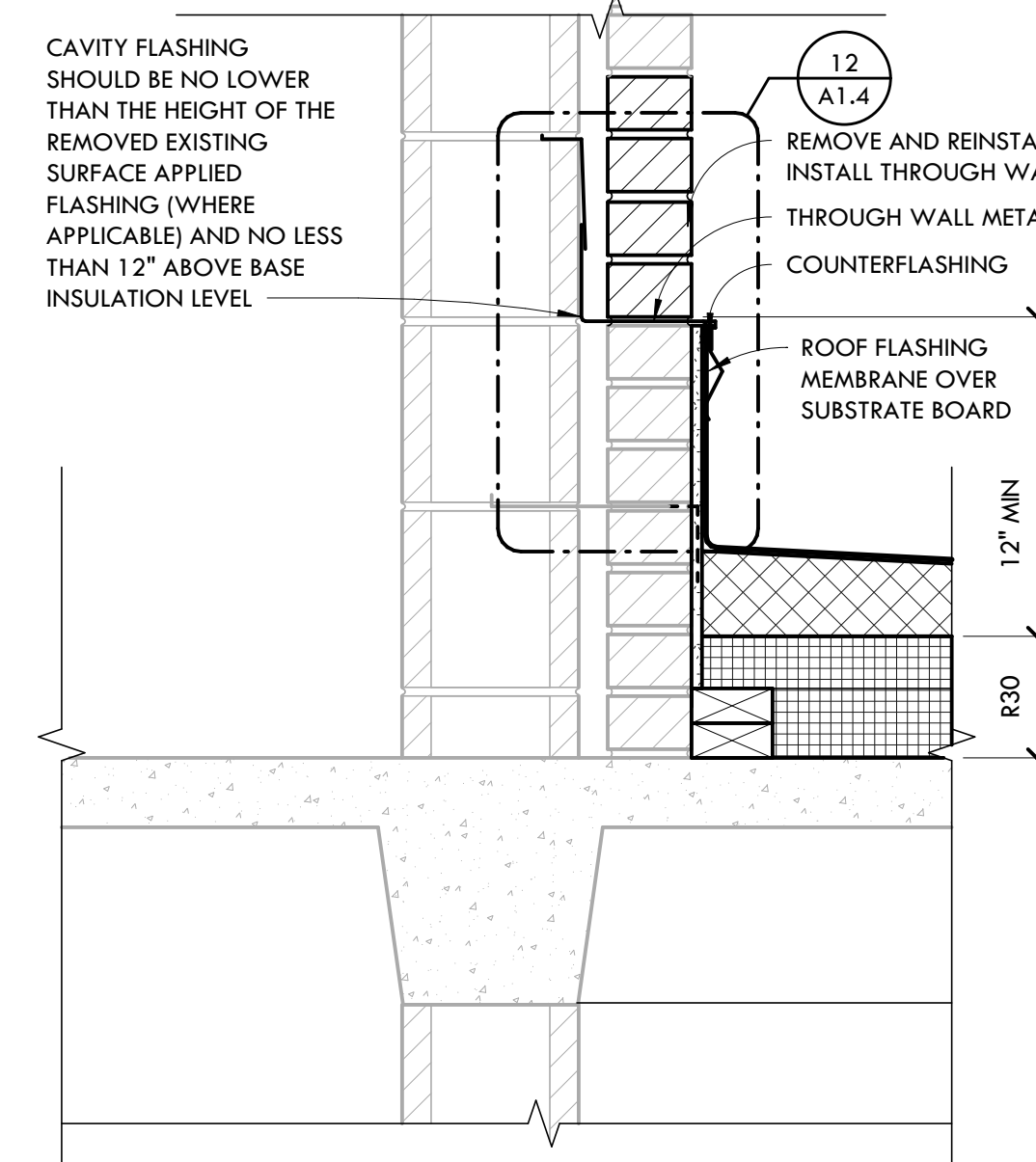
8 PENTHOUSE GUTTER EDGE
SCALE: 3\"/>



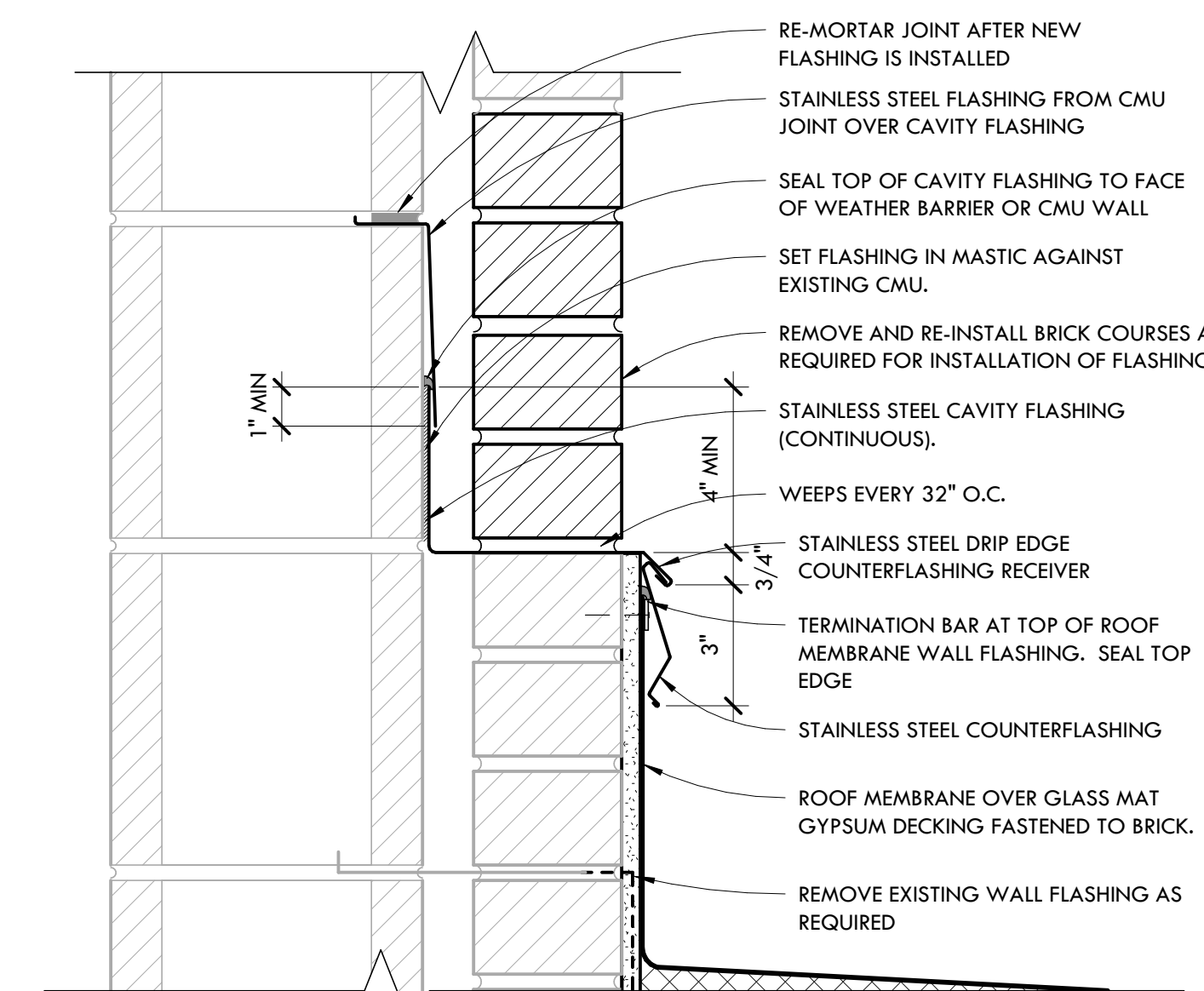
9 TYPICAL MEDIUM PARAPET RE-ROOF
SCALE: 1 1/2" = 1'-0"



10 TYPICAL TALL PARAPET RE-ROOF
SCALE: 1 1/2" = 1'-0"



11 TYPICAL WALL FLASHING DETAIL
SCALE: 1 1/2" = 1'-0"

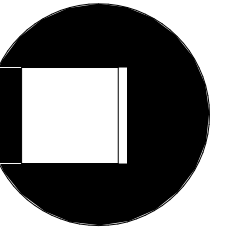


WHERE FLASHING EDGE TURNS VERTICAL OR AT TERMINATIONS, COUNTERFLASHING PROFILE SHALL RUN VERTICAL WITH RECEIVER CUT INTO MASONRY. VERTICAL LEG SHALL BE TUCKED UNDER HORIZONTAL COUNTERFLASHING.

12 COUNTERFLASHING DETAIL
SCALE: 3\"/>

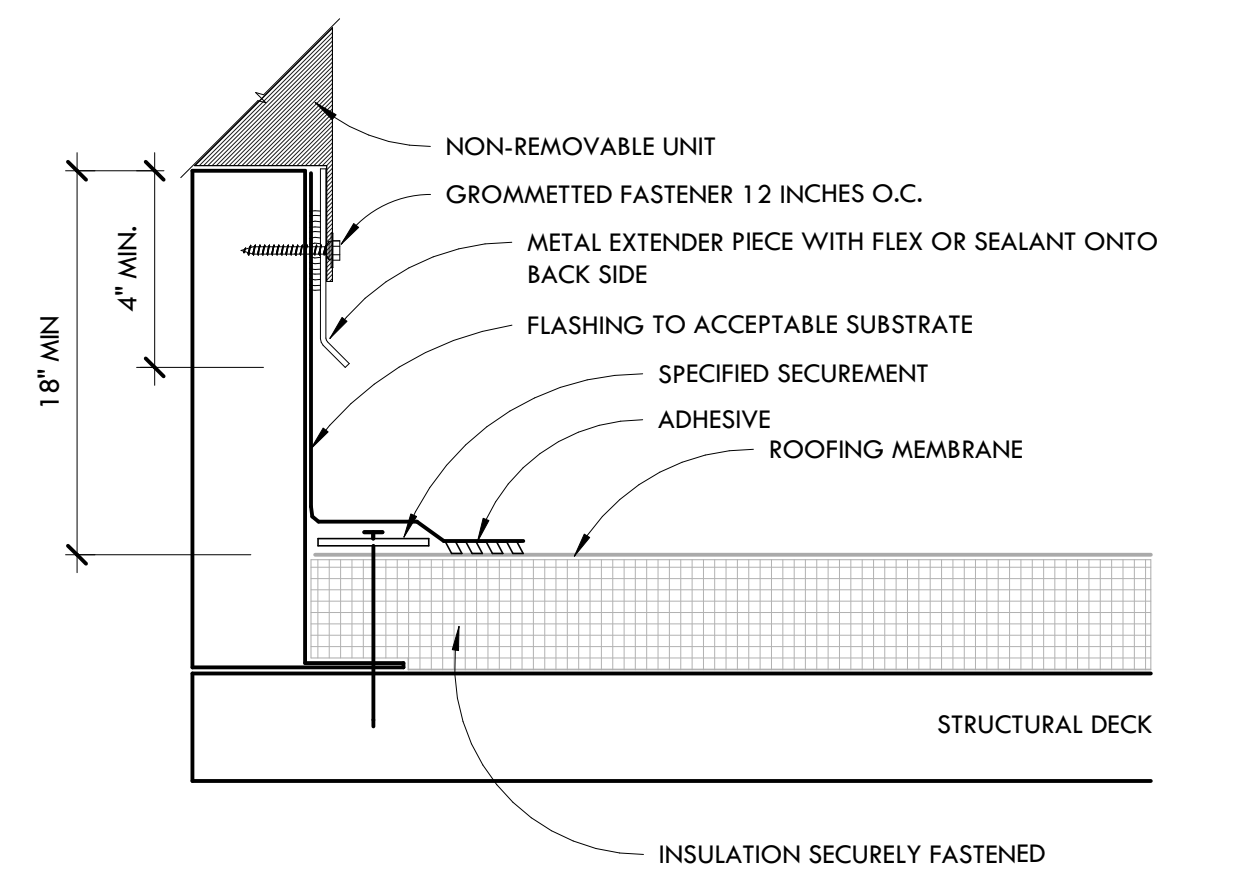
PARAPET SECTIONS & ROOFING DETAILS

SCALE: AS NOTED



RE-ISSUED FOR	DATE
#	DESCRIPTION

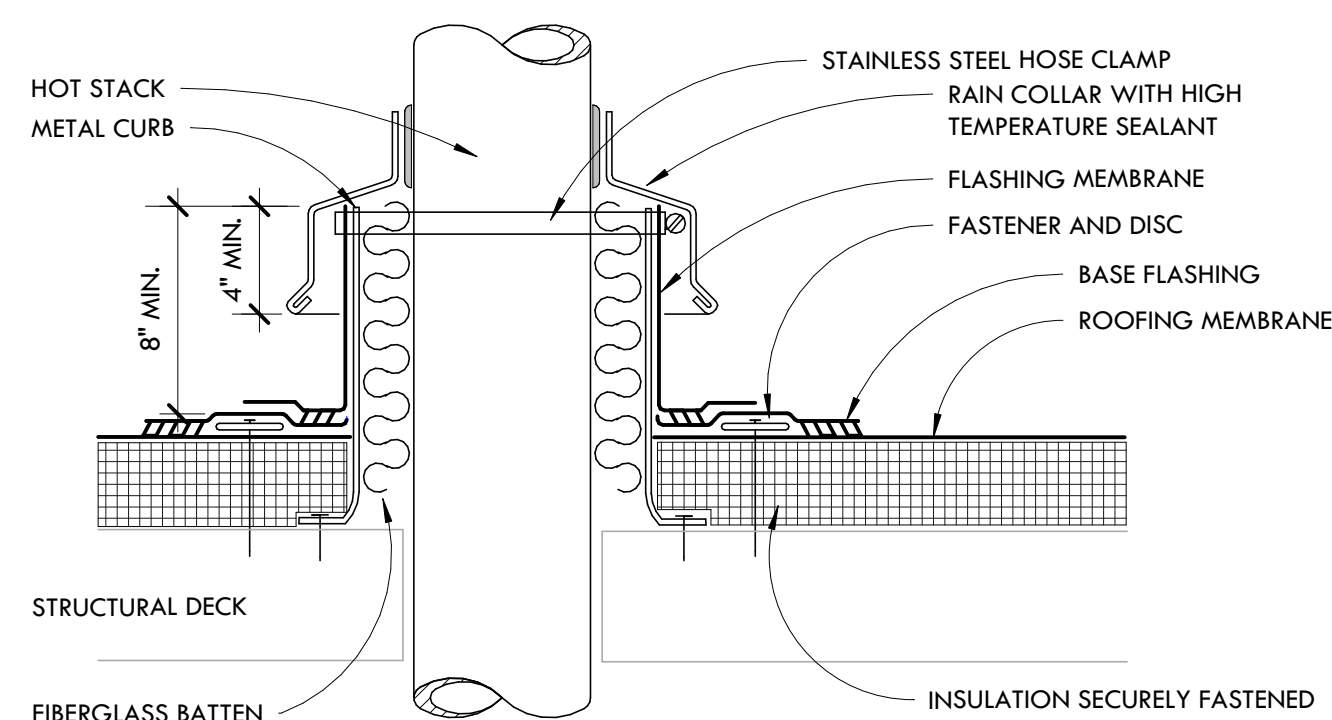
DATE: 10-25-22	PROJECT NUMBER: 31029-03
	SHEET NUMBER: A1.4



NOTE:
1) METAL EXTENDER PIECE IS REQUIRED IF EXISTING COUNTERFLASHING IS CONTAMINATED AND OR COUNTERFLASHING FASCIA IS LESS THAN 4 INCHES WIDE, FASTENED 12 INCHES O.C. WITH GROMMETED FASTENER.

2 TYPICAL CURB FLASHING

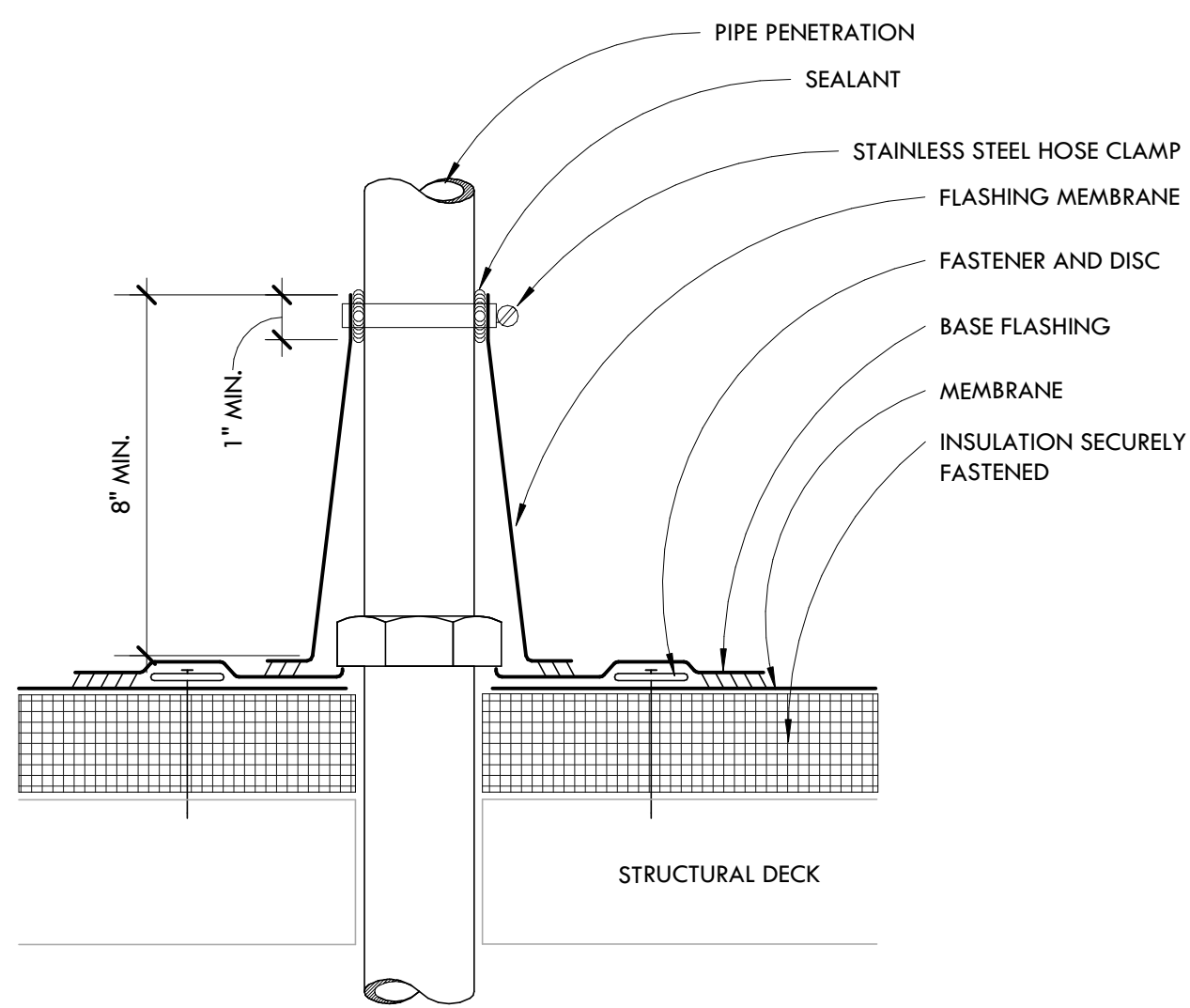
SCALE: 3" = 1'-0"



NOTES:
1) PVC MEMBRANE SHALL NOT BE IN CONTACT WITH SURFACES HAVING SUSTAINED TEMPERATURES ABOVE 160°F.

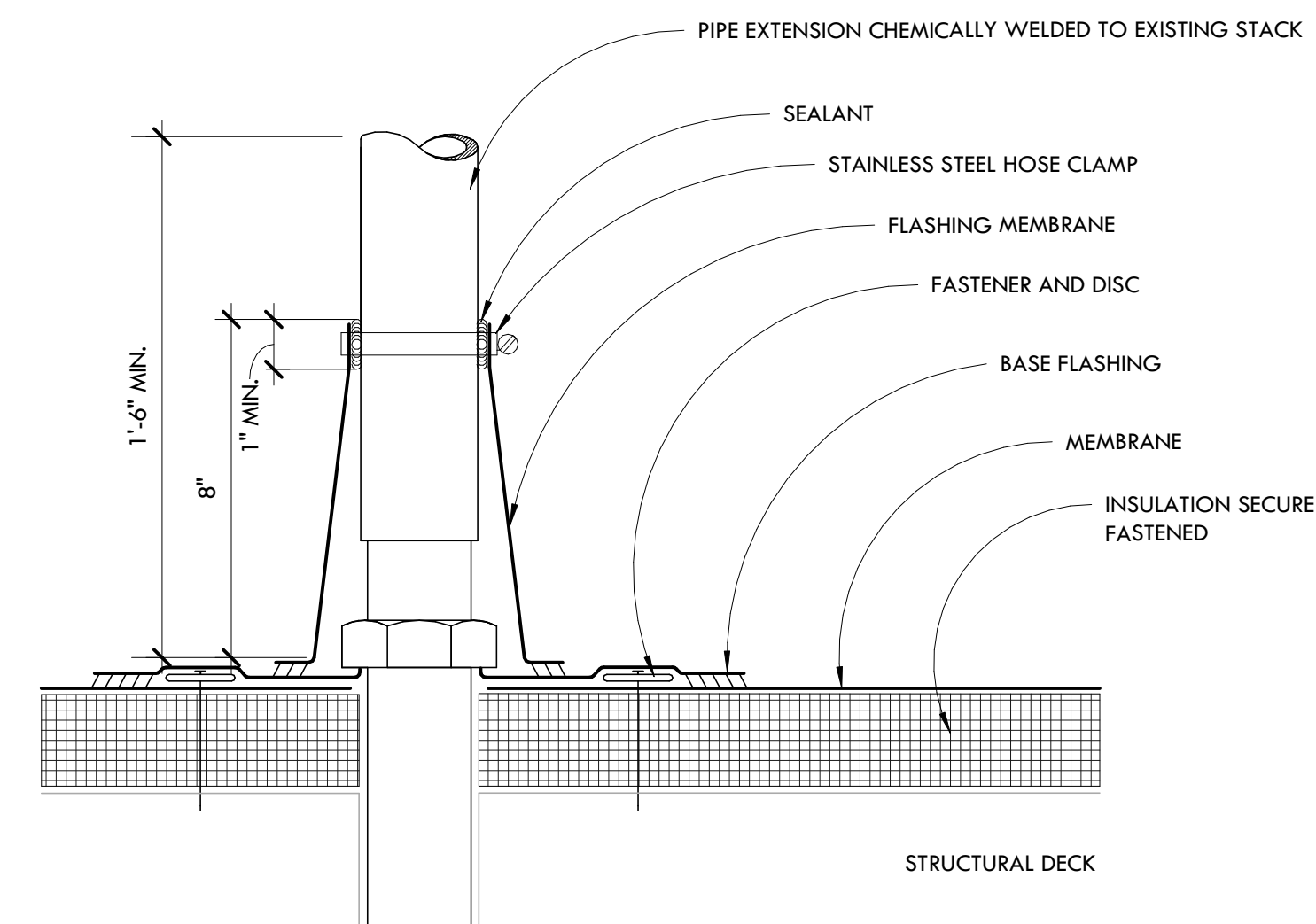
3 TYPICAL HEATED STACK FLASHING

SCALE: 3" = 1'-0"



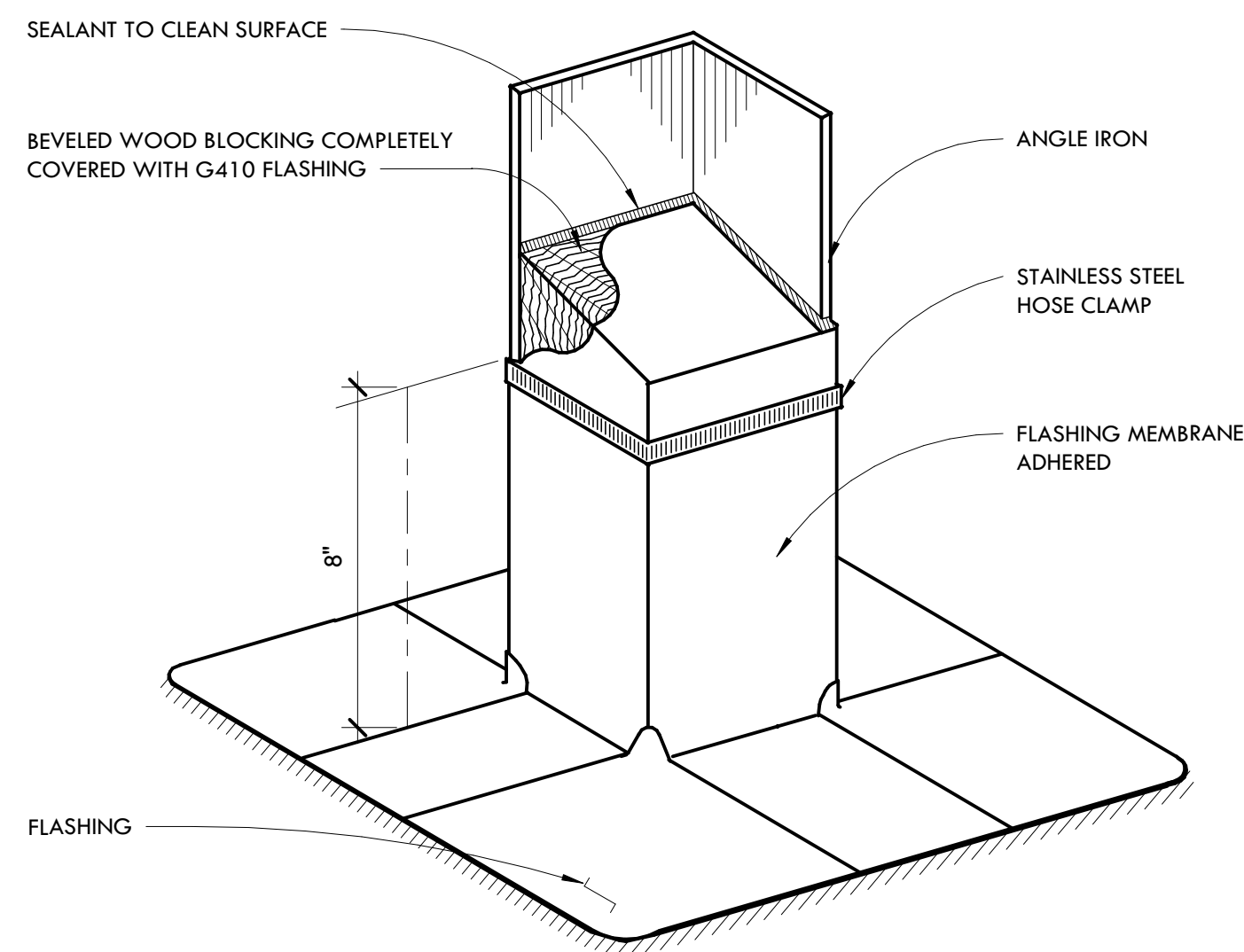
4 CONE FLASHING AT PENETRATION

SCALE: 3" = 1'-0"



5 CONE FLASHING AT PENETRATION WITH PIPE EXTENSION

SCALE: 3" = 1'-0"

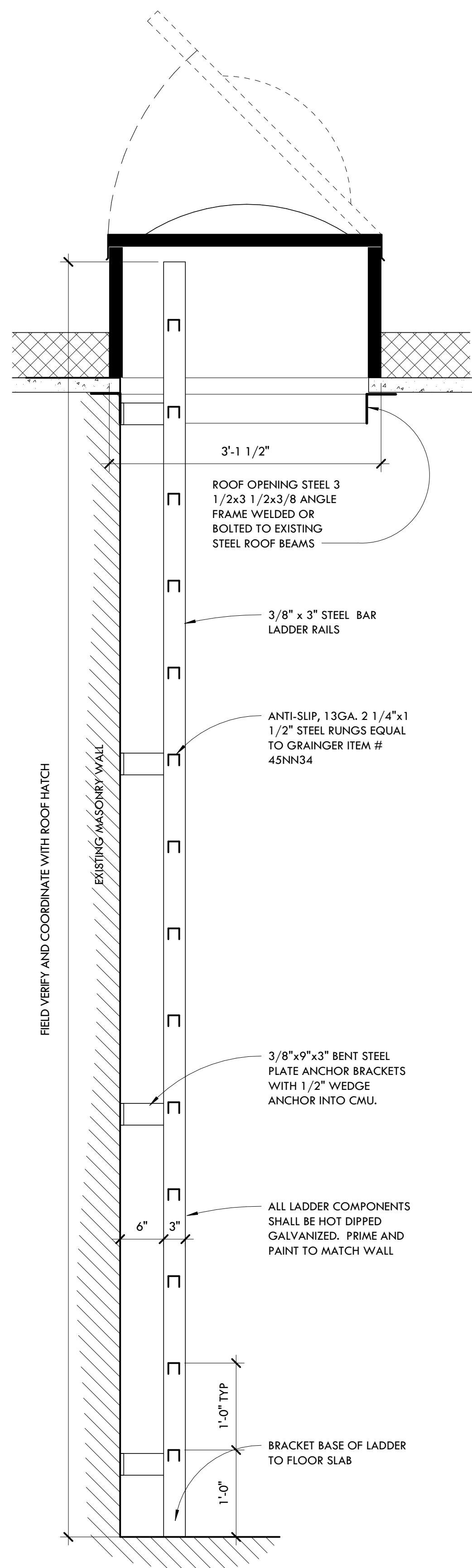


NOTES:
1) FASTENER AND DISC UNDER BASE FLASHING NOT SHOWN.

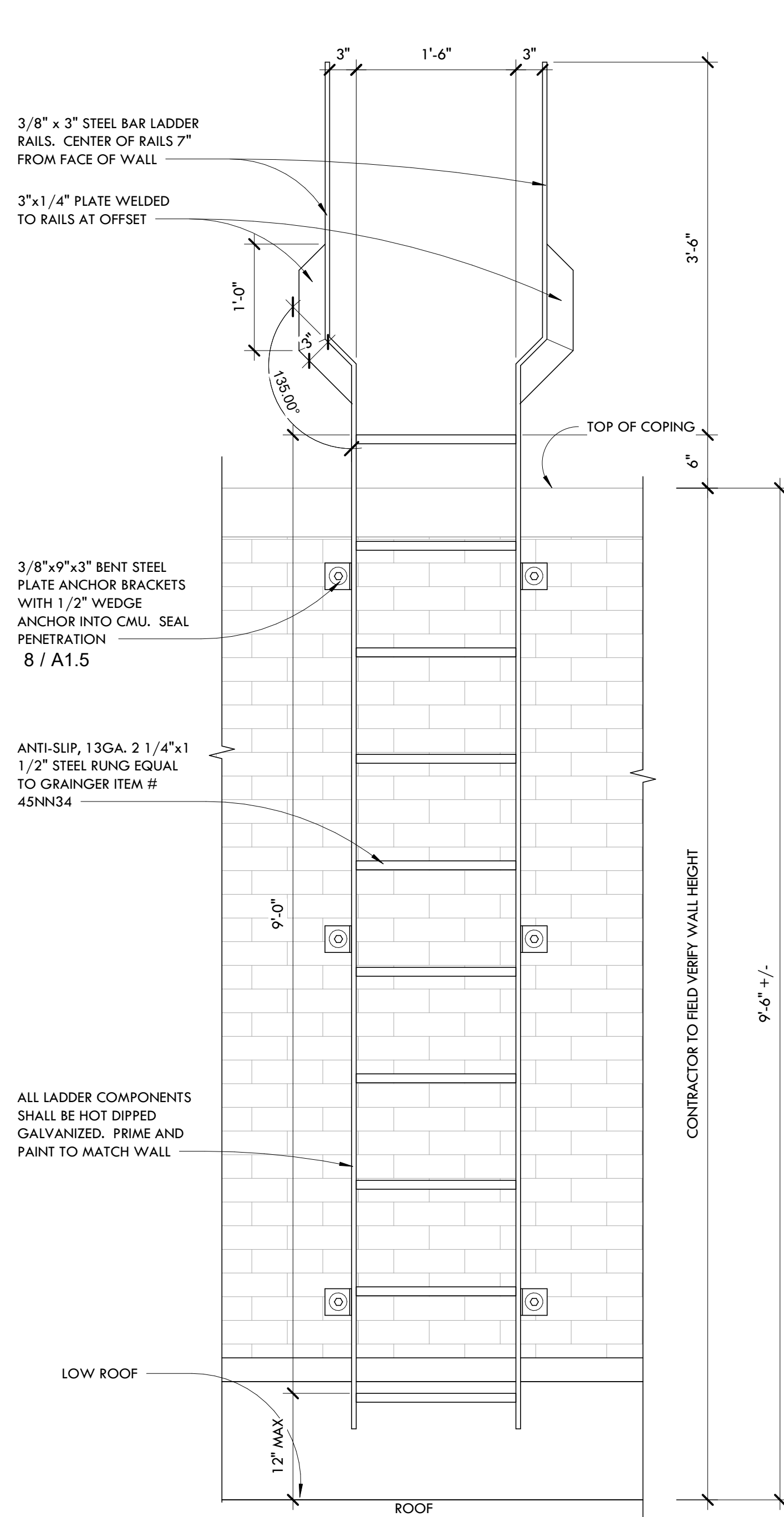
6 ANGLE IRON FLASHING

SCALE: NTS

LADDER AND HATCH TO AREA D ROOF

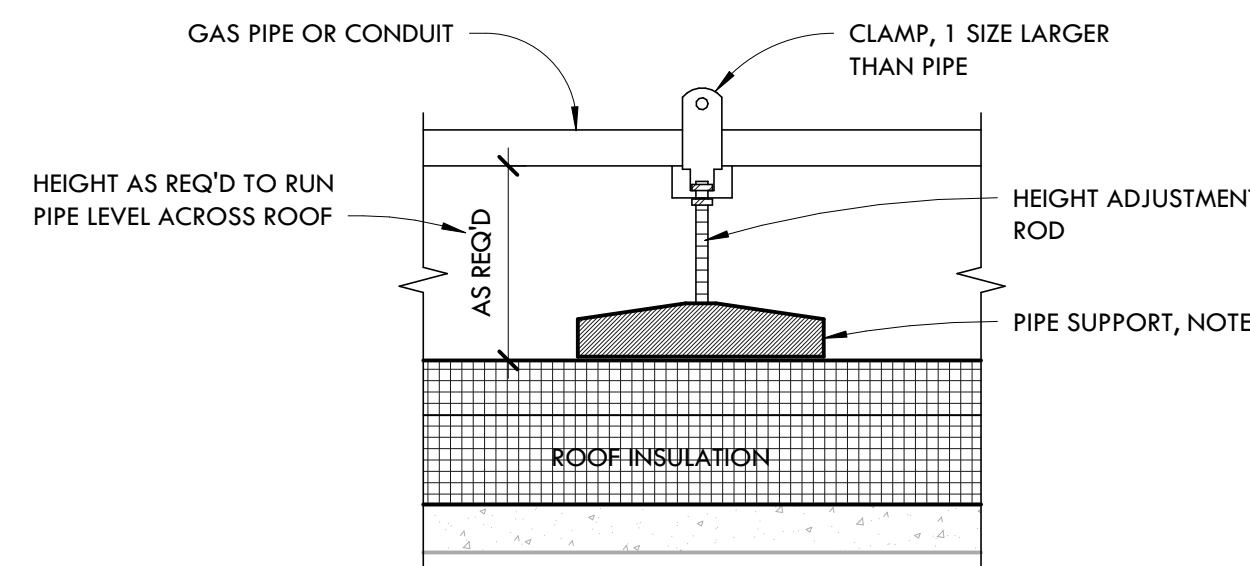


LADDER FROM ROOF AREA A2 TO A5



7 CONDUIT AND PIPING SUPPORT DETAIL

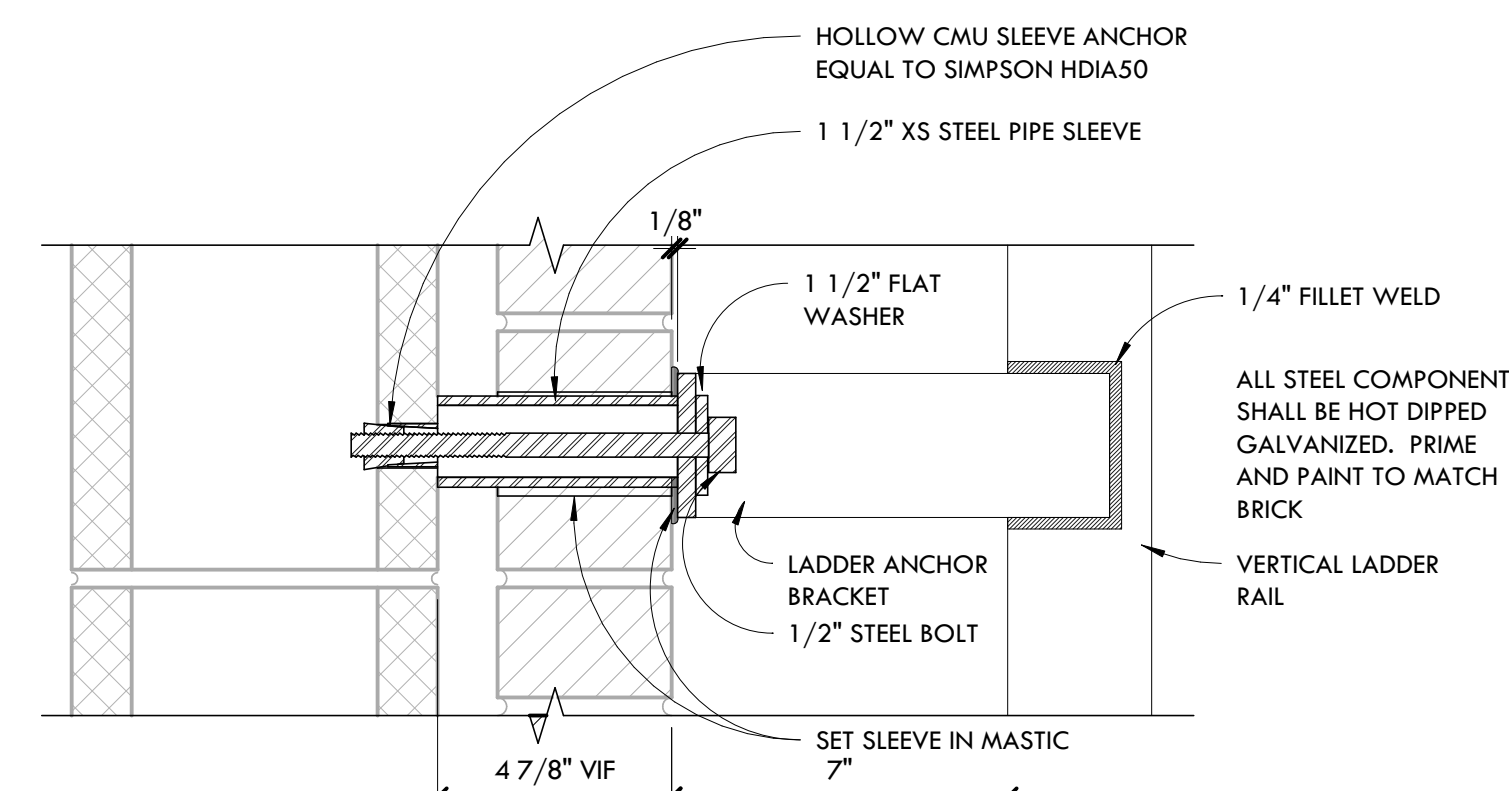
SCALE: NTS



NOTES:
1. PIPE SUPPORT SHALL BE 100% RECYCLED RUBBER WITH 14GA, GALVANIZED ADJUSTABLE HEIGHT STEEL CHANNEL, MIFAB MODEL CEW12-24 OR APPROVED EQUAL.
2. FOR GAS PIPING: ALL PIPING CLAMPS AND OTHER METALLIC SURFACES TO BE PRIMED AND PAINTED WITH CORROSION INHIBITOR TYPE PRIMER AND PAINT. PIPING SHALL BE PAINTED YELLOW. PAINT TYPE AND APPLICATION METHOD SHALL BE APPROVED BY LOCAL CODE OFFICIAL.
3. PIPING SHALL BE SUPPORTED AT MAXIMUM INTERVALS AS FOLLOWS:
GAS: 1/2"=6' O.C. TO 1"-8' O.C., 1 1/4" OR LARGER 10'-0" O.C.
CONDUIT: 1/2"=4' O.C. TO 1"-6' O.C., 1 1/4" OR LARGER 8' O.C.

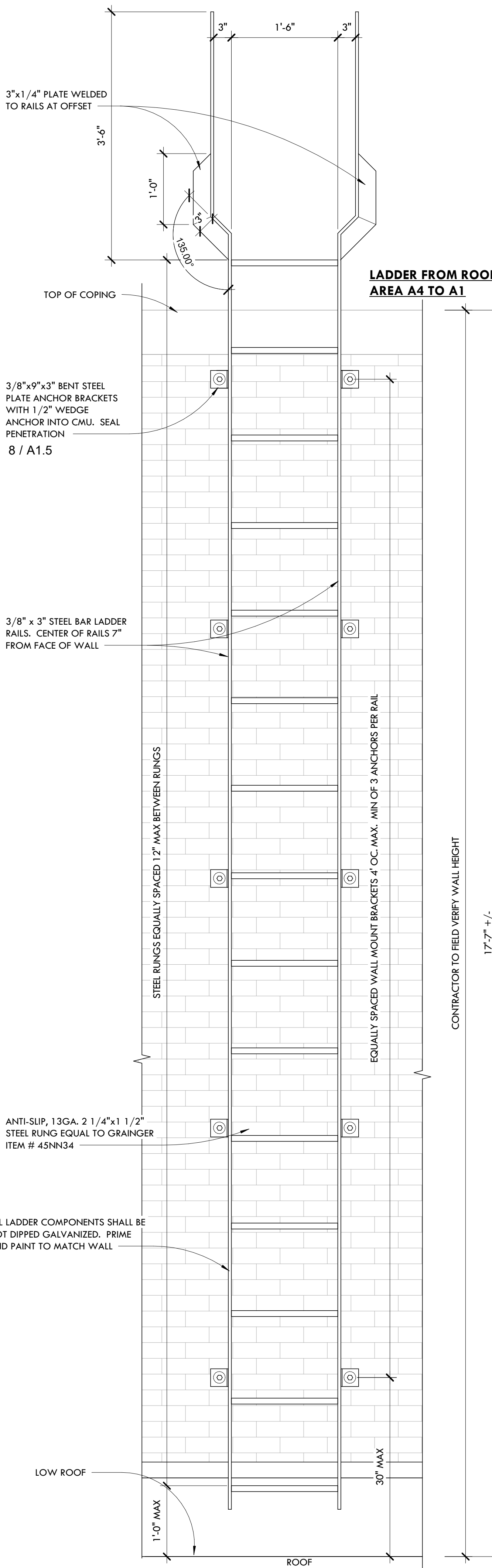
1 ROOF LADDER ELEVATIONS

SCALE: 1" = 1'-0"



8 ROOF LADDER ANCHOR DETAIL

SCALE: 3" = 1'-0"



TYPICAL ROOF AND LADDER DETAILS

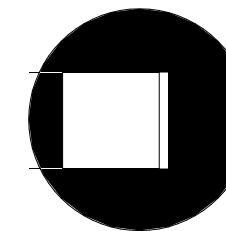
SCALE: AS NOTED

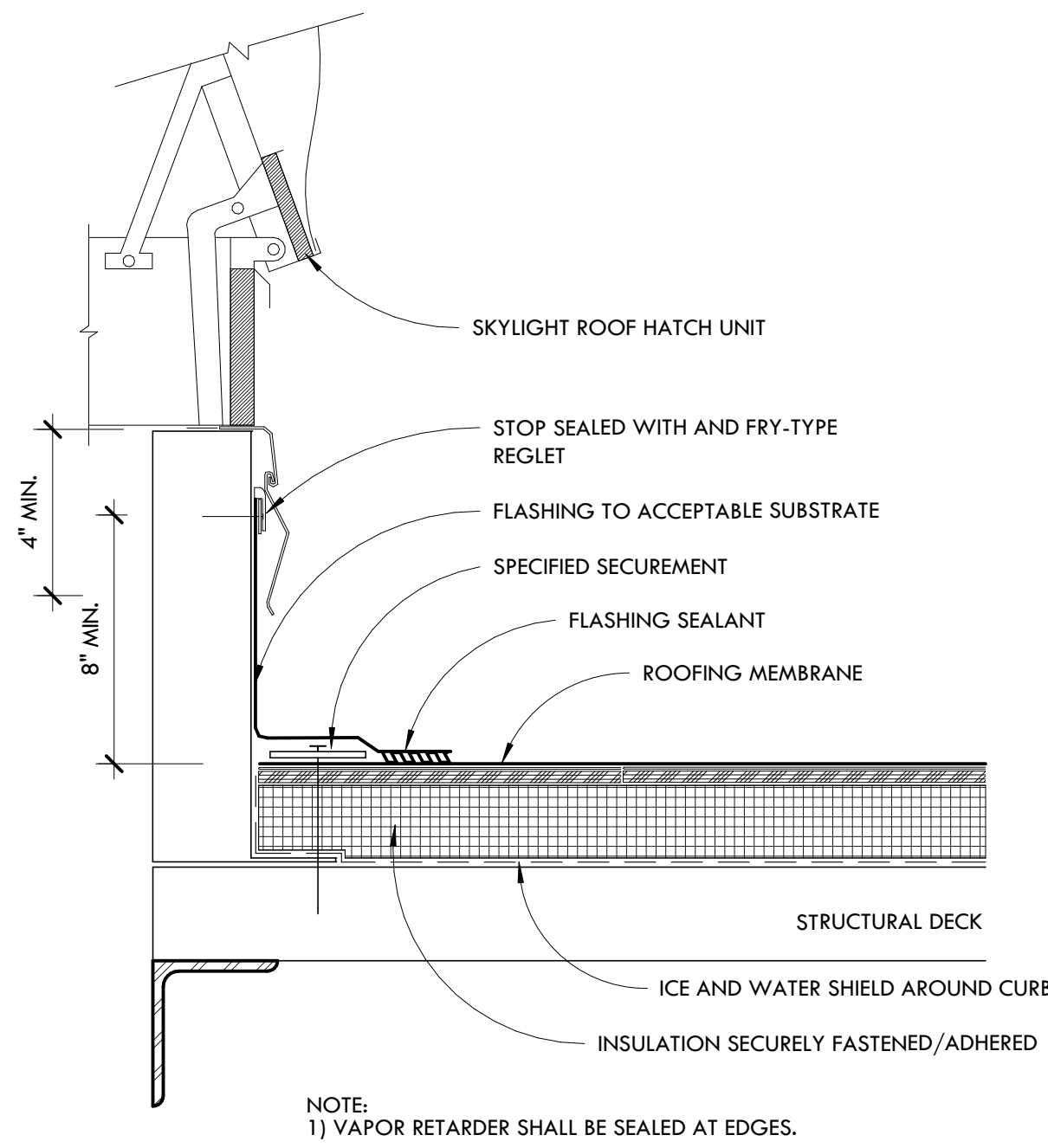
WEST MIDDLE SCHOOL ROOF REPLACEMENT - IFB#23-18
RPS DISTRICT 205 - PROJECT #2239
1900 N ROCKTON AVE, ROCKFORD IL 61103

COPYRIGHT 2022
All drawn and written information
appearing herein shall not be duplicated,
reproduced, or otherwise used without the
written consent of
Larson & Darby Group

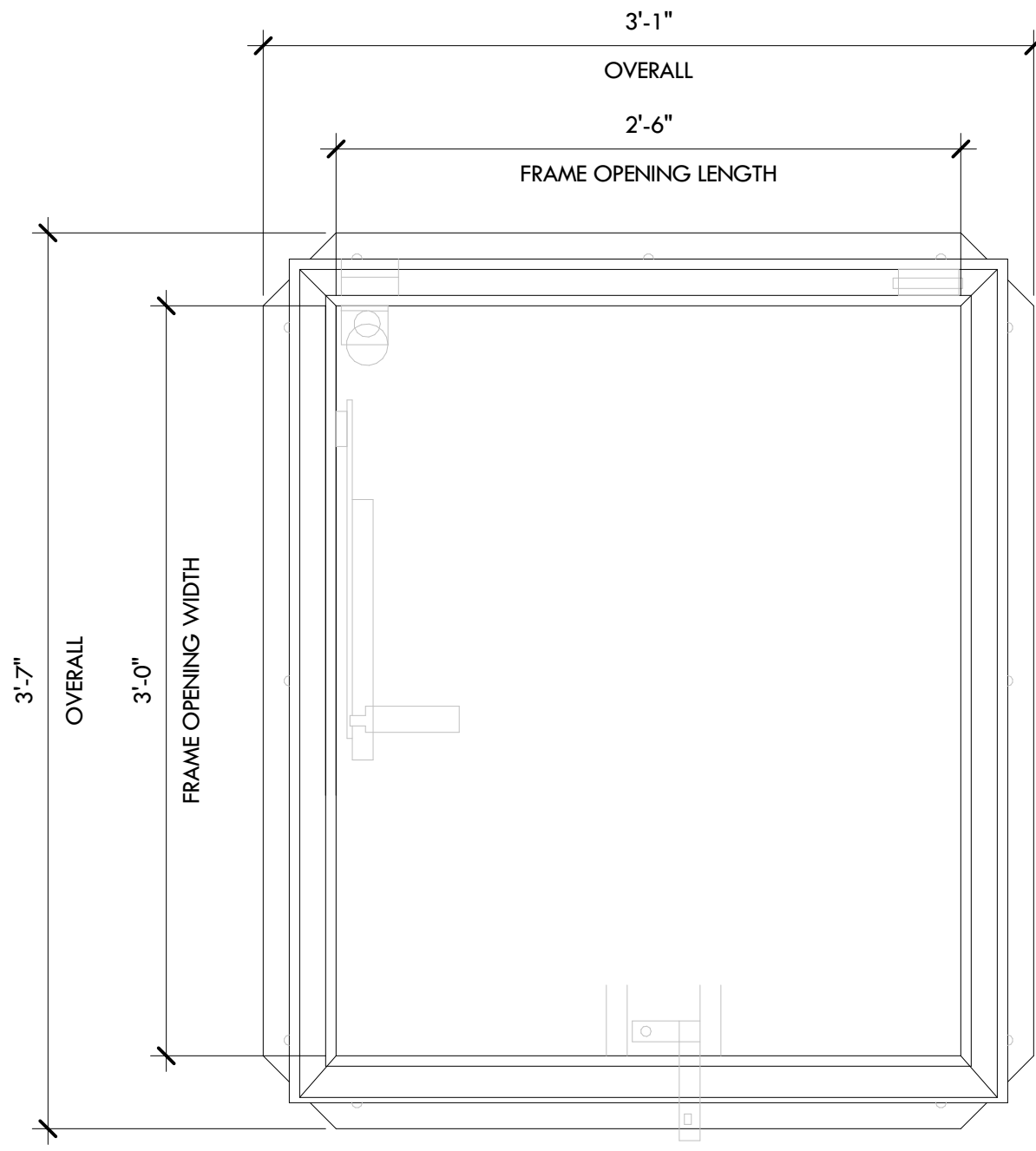
#	RE-ISSUED FOR		DATE
	DESCRIPTION		

DATE: 10-25-22	PROJECT NUMBER: 31029-03	SHEET NUMBER: A1.5
----------------	--------------------------	--------------------

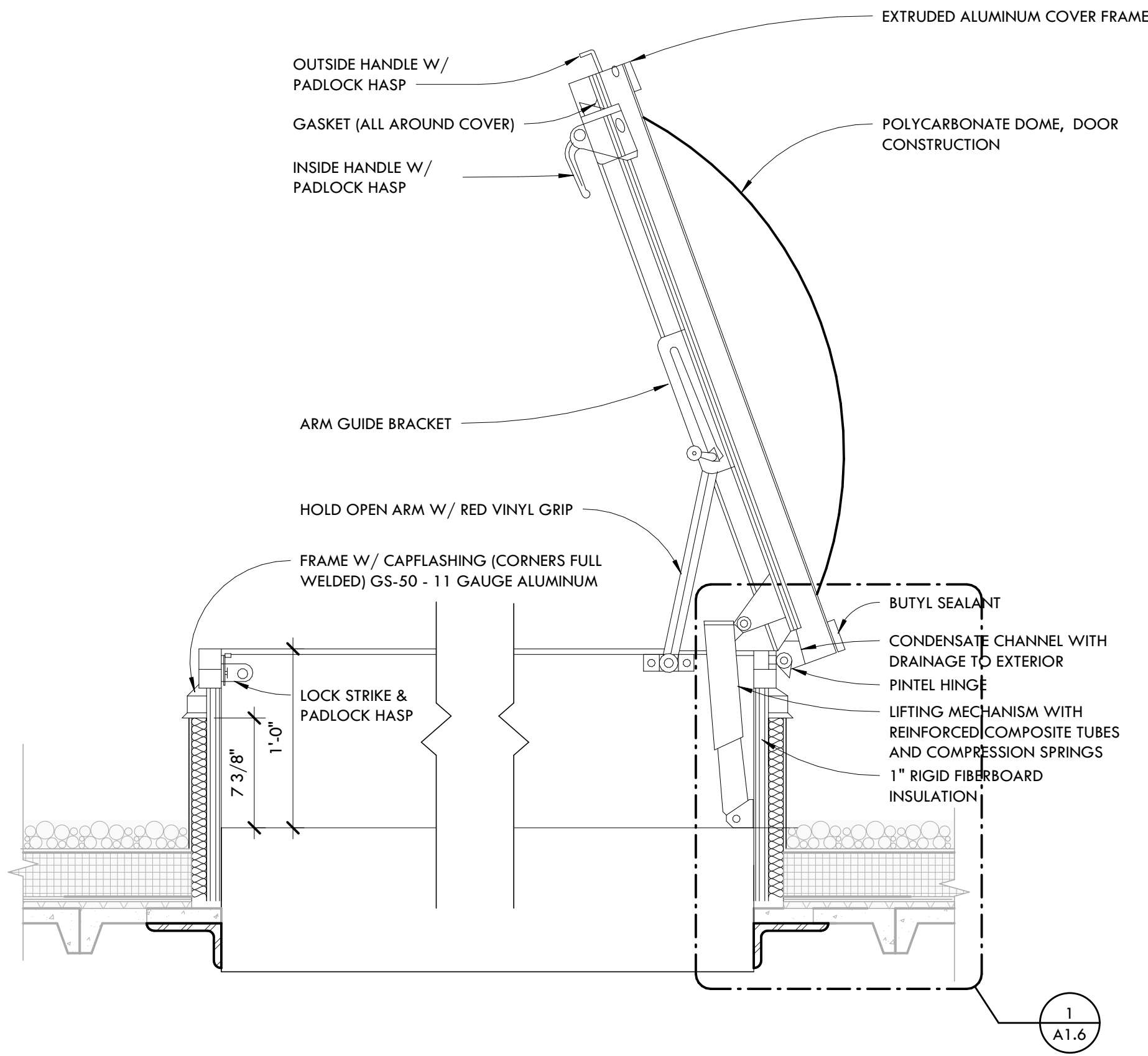




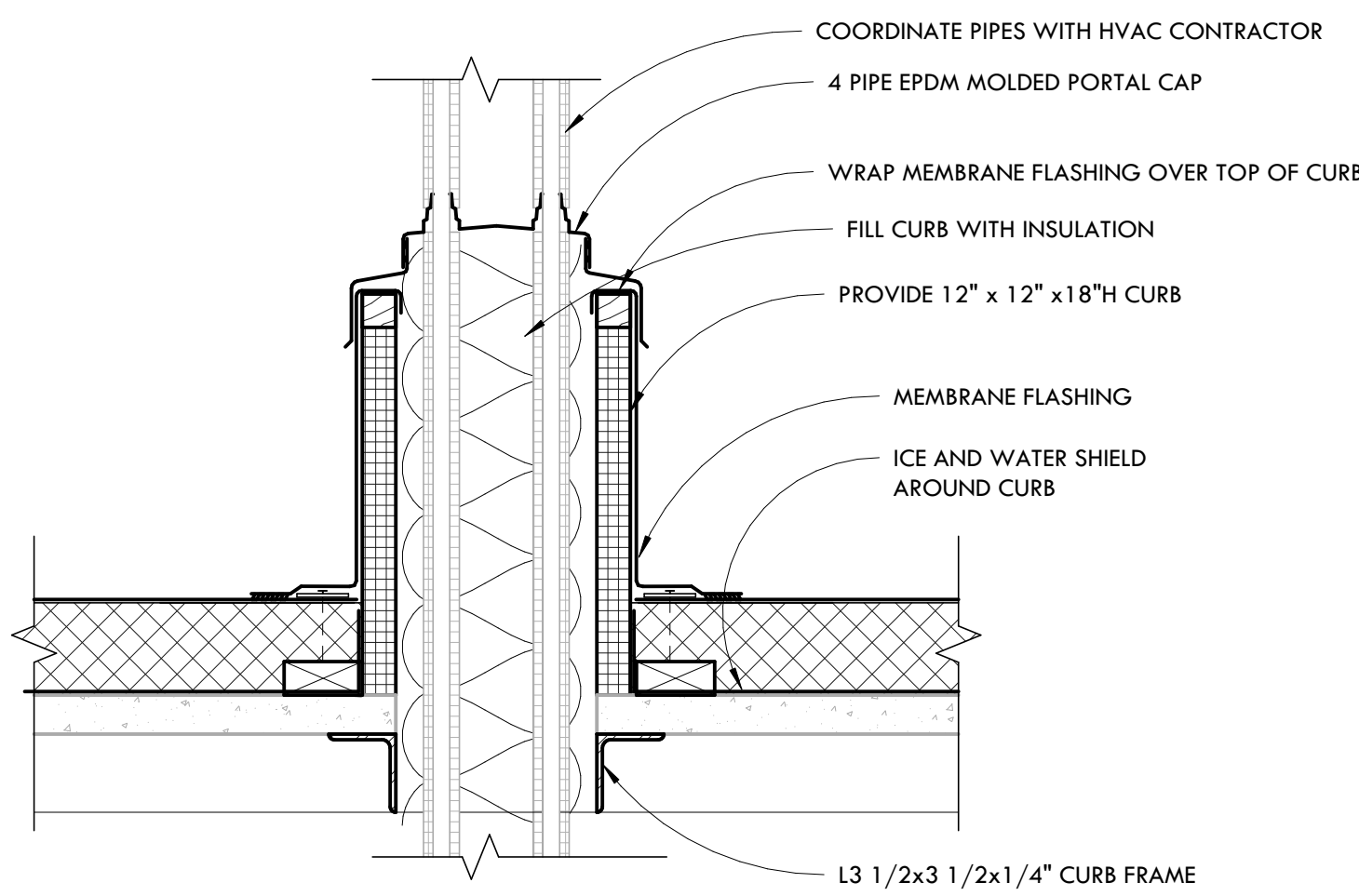
1 SKYLIGHT ROOF HATCH FLASHING
SCALE: 3" = 1'-0"



4 ROOF HATCH LID
SCALE: 1 1/2" = 1'-0"



2 ROOF HATCH SECTION
SCALE: 1 1/2" = 1'-0"

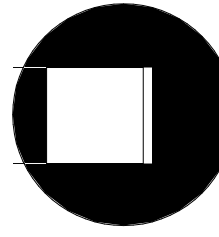


ROOFING CONTRACTOR TO PROVIDE 17 CURB AND PIPE PORTAL PENETRATIONS AT LOCATIONS COORDINATED BY HVAC CONTRACTOR

3 TYPICAL PIPE PORTAL DETAIL
SCALE: 1 1/2" = 1'-0"

TYPICAL ROOF DETAILS

SCALE: AS NOTED



RE-ISSUED FOR	DATE	
	DESCRIPTION	
#		

DATE:	10-25-22
PROJECT NUMBER	31029-03
SHEET NUMBER	A1.6