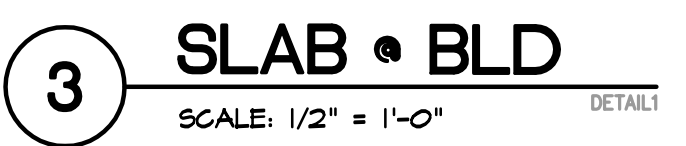
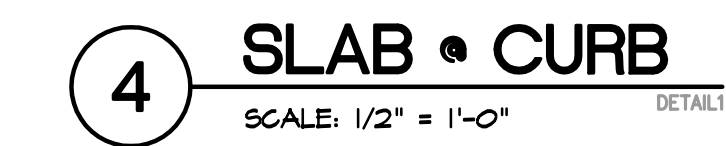
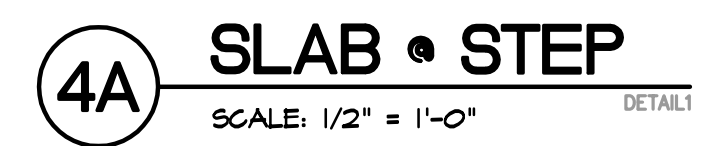
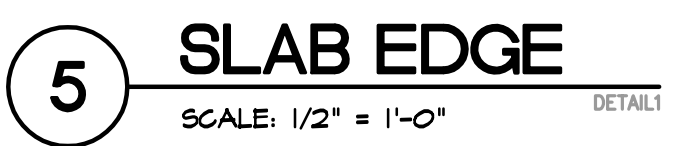
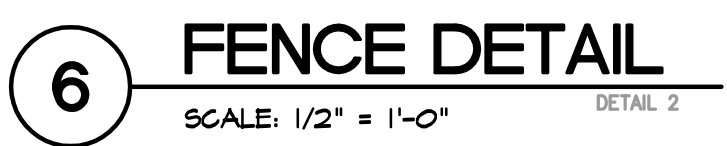
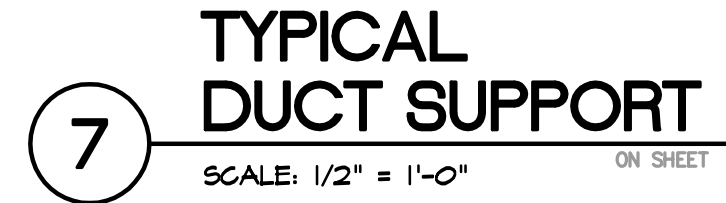
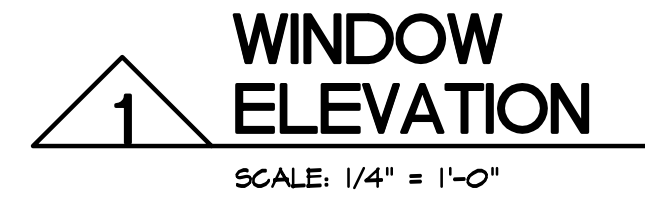


147



④

GRADE  
- 0'-40"



**ROCKFORD EAST HIGH SCHOOL**  
PUBLIC SCHOOLS  
2929 CHARLES STREET  
ROCKFORD, ILLINOIS



## OWNER'S EQUIPMENT

- A SANDER  
B SANDER  
C SANDER

D JOINTER  
THIS HAS A SHEET METAL HOOD WITH A 5-1/2" DIAMETER (IN AND OUT ARE NEARLY THE SAME) CONNECTION.

E JOINTER  
THIS HAS A SHEET METAL HOOD WITH A 5-1/2" DIAMETER (IN AND OUT ARE NEARLY THE SAME) CONNECTION.

F PLANNER  
THIS EQUIPMENT HAS A 7" WIDE x 6-3/4" HIGH RECTANGULAR OPENING ON THE FACE OF THE EQUIPMENT. CONTRACTOR SHALL FABRICATE A COLLECTOR BOX TO TRANSITION FROM THE FACE OF THE PLANNER TO A DUCT CONNECTION.

G PORTABLE TABLE SAW  
PROVIDE DUST DROP FOR CONNECTION OF PORTABLE SAWS EXISTING FLEXIBLE CONNECTION WHEN SAW IS USED IN THE SHOP.

H FLYWOOD SAW  
THERE IS A 3-1/4" SQUARE HOLE ON THE BACK FACE OF THIS SAW. THE HOLE IS AT THE TERMINATION OF A 'CHUTE' THAT IS FORMED WHEN A SHEET OF PLYWOOD IS LAID IN THE CUTTING SURFACE. CONTRACTOR TO FABRICATE A BOX TO CONNECT A SOLID DUCT DROP TO THE BASE OF THE SAW AND REMOVE DUST THAT FALLS TO THE BOTTOM OF THE CHUTE.

J BAND SAW

K BAND SAW

L TABLE SAW

M CHOP SAW

CONTRACTOR TO PROVIDE A DUST COLLECTION SYSTEM THAT WILL REMOVE 40% OF THE DUST GENERATED BY THIS EQUIPMENT. THIS MAY BE (2) 4" RADIAL ARM SAW HOODS ON EACH SIDE OF SAW OR A SINGLE HOOD BEHIND THE SAW. HOOD SHALL NOT INTERFERE WITH THE FULL RANGE OF OPERATION OF THE SAW.

N CHOP SAW  
CONTRACTOR TO PROVIDE A DUST COLLECTION SYSTEM THAT WILL REMOVE 40% OF THE DUST GENERATED BY THIS EQUIPMENT. THIS MAY BE (2) 4" RADIAL ARM SAW HOODS ON EACH SIDE OF SAW OR A SINGLE HOOD BEHIND THE SAW. HOOD SHALL NOT INTERFERE WITH THE FULL RANGE OF OPERATION OF THE SAW.

MEASUREMENTS OF CONNECTIONS PROVIDED ARE FOR PRICING ONLY. CONTRACTOR TO FIELD VERIFY ALL. I-X" INDICATES THE INTERIOR DIAMETER OF THE EXISTING CONNECTION. O-X" INDICATES THE OUTSIDE DIAMETER OF THE EXISTING CONNECTION.

## COLLECTION EQUIPMENT

A 5,000 CFM SELF-CONTAINED DUST COLLECTOR WITH MIN. (2) 55 GALLON DRUM COLLECTION. EQUAL TO VAS MODEL SDG 100 WITH VAS MODEL S1500 FAN.

B FAN OUTLET SILENCER CAPABLE OF LIMITING NOISE OUTPUT TO 90DBA, or less.

C NO RETURN VALVE EXPLOSION ISOLATION VALVE AND CONTROL PANEL FOR SYSTEM SHUT DOWN, DUST LEVEL, AND POWER INTEGRATION.

D SUPPLY GRILLE ON END OF DUCT. INDUSTRIAL ROUND DIFFUSER, STEEL, EQUAL TO CARNES MODEL 55DB.

## MECHANICAL PLAN NOTES

M1 PROVIDE 5" BLEED-IN DUCT TO ACCOMMODATE EXTRA/FUTURE CAPACITY OF THE 5,000CFM SYSTEM SPECIFIED.

## DUCTWORK ALTERNATIVES

BASE BID: PROVIDE STANDARD, SINGLE WALL, 6-90, GALVANIZED, SPIRAL DUCT FOR DUST COLLECTION.

Up to 84 dia. 24 GA  
84 to 144 dia. 22 GA  
154 to 244 dia. 18 GA

ELBOWS AND BRANCHES TO BE TWO (2) GAUGES HEAVIER THAN STRAIGHT PIPE OF EQUAL DIAMETER.

ADJUSTABLE ELBOWS AND 90 DEGREE TEES ARE NOT TO BE PROVIDED.

ELBOWS TO BE MINIMUM OF 15 CENTERLINE RADIUS.

BRANCH ENTRANCE LEGS TO BE 45 DEGREE.

90 DEGREE TEES ARE NOT TO BE PROVIDED!

STANDARD SLIP FIT CONNECTIONS WITH COUPLINGS.

ALTERNATE BID: PROVIDE SINGLE WALL, 6-90, GALVANIZED, CLAMP TOGETHER, STANDARD GASKETED, DUCTWORK BY Nordfab, Duct Inc, OR EQUAL FOR DUST COLLECTION.

ELBOWS TO BE MINIMUM OF 15 CENTERLINE RADIUS.

BRANCH ENTRANCE LEGS TO BE 45 DEGREE.

90 DEGREE TEES ARE NOT TO BE PROVIDED!

FULLY WELDED, LEAK-TIGHT SEAMS.

## SYMBOL KEY

- 6" EXHAUST DUCT SHOWN ACTUAL SIZE  
— 8" EXHAUST DUCT SHOWN AS SINGLE LINE  
— 10" DUCT DROP  
— 12" CLEAN AIR RETURN SHOWN ACTUAL SIZE  
— AIR RETURN GRILLE/REGISTER  
— WIRE RUN TO PANEL  
120V CONVENIENCE RECEPTACLE PROVIDE WEATHERPROOF AND 6FCI AS REQ'D AT EXTERIOR  
DISCONNECT

## DISCONNECT SWITCHES

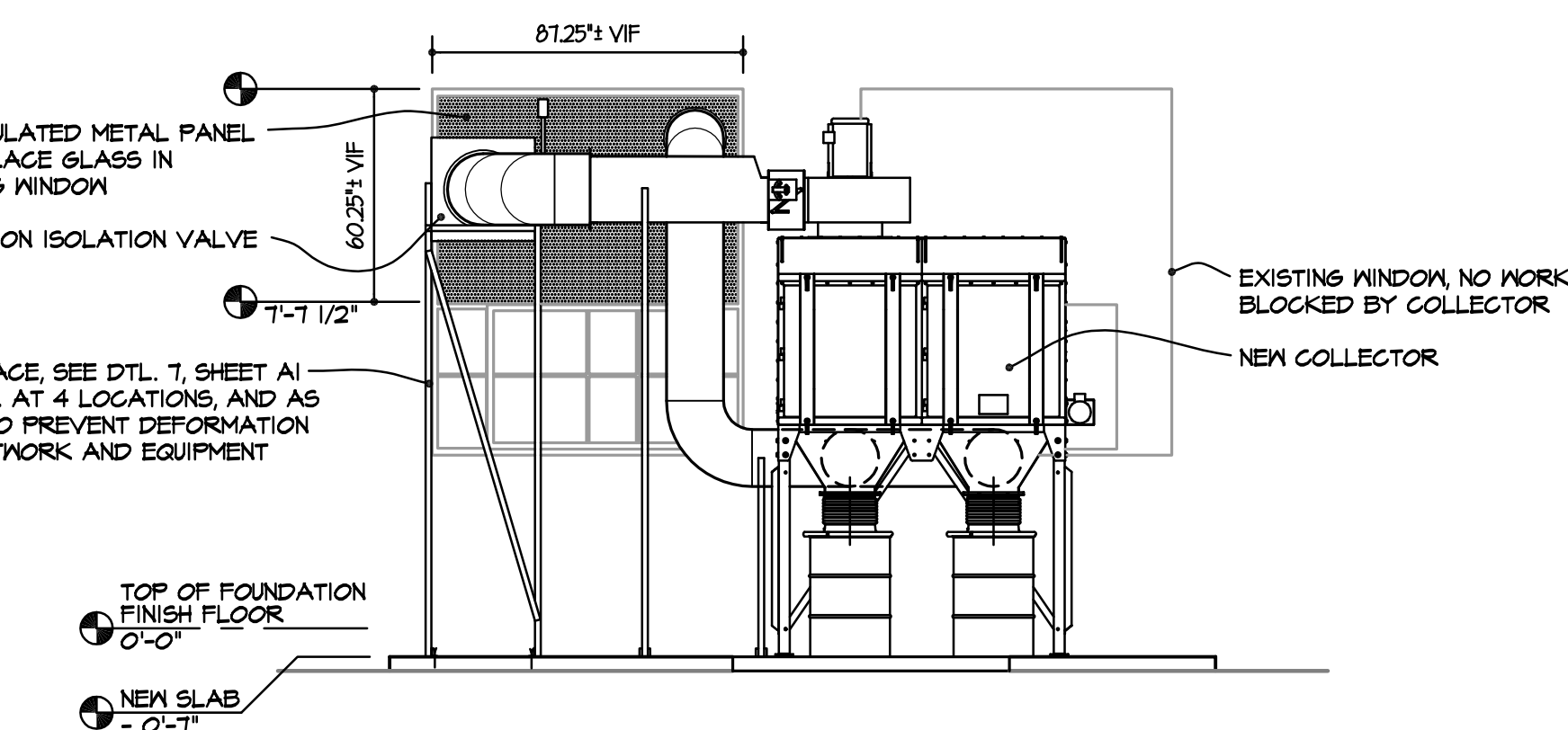
ALL ELECTRICAL DISCONNECT SWITCHES SHALL BE FURNISHED & INSTALLED BY THE ELECTRICAL CONTRACTOR. EACH DISCONNECTING MEANS SHALL BE LEGIBLY MARKED TO INDICATE ITS PURPOSE UNLESS LOCATED AND ARRANGED SO THE PURPOSE IS EVIDENT. MARKING SHALL BE SUFFICIENT TO WITHSTAND THE ENVIRONMENT INVOLVED.

## PANEL PP-N

3-PHASE  
250 AMP MAIN BREAKER

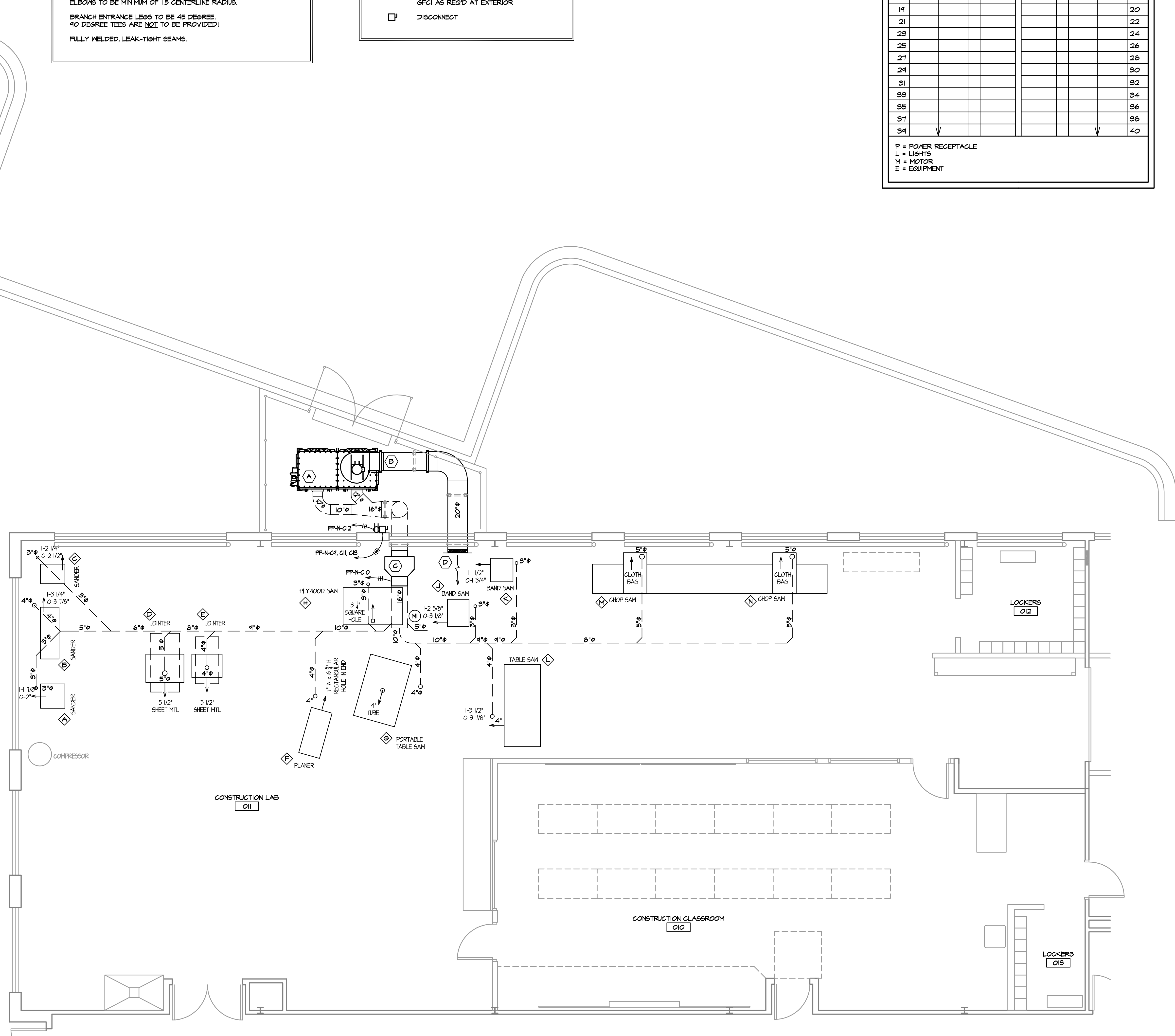
CIRC	CIRCUIT USAGE	BREAKER AMPS	BREAKER AMPS	CIRCUIT USAGE	CIRC
1	SPARE	20	30	P	2
3	WASHER	20	VIF	P	4
5	POWER	20	20	P	6
7	SMART BD	20	20	M	8
9			20	P	10
11	COLLECTOR	50	20	P	12
13			20	P	14
15	EMPTY				16
17					18
19					20
21					22
23					24
25					26
27					28
29					30
31					32
33					34
35					36
37					38
39					40

P = POWER RECEPTACLE  
L = LIGHTS  
M = MOTOR  
E = EQUIPMENT



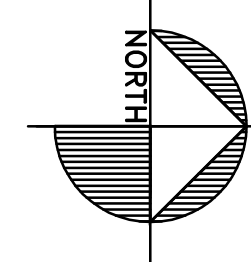
## 1 DUCTWORK LAYOUT ELEVATION

SCALE: 1/4" = 1'-0"



## 1 MECHANICAL PLAN

SCALE: 1/2" = 1'-0"



CONSTRUCTION LAB DUST COLLECTION SYSTEM



ROCKFORD EAST HIGH SCHOOL  
2828 CHARLES STREET  
ROCKFORD, ILLINOIS

DRAWN

BFA

DATE

07-01-2016

PROJECT No.

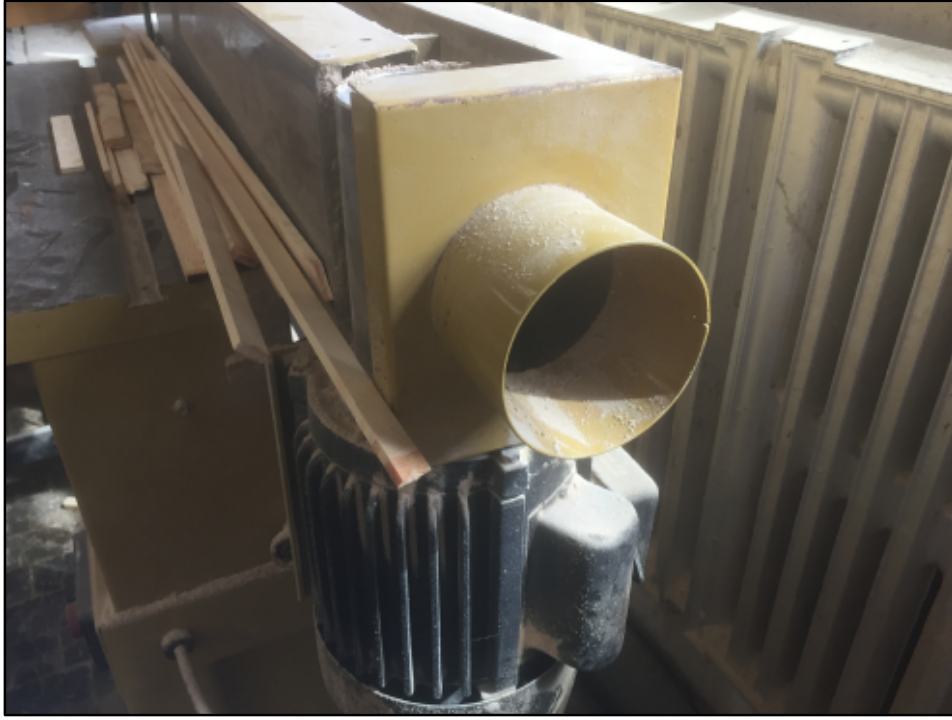
984A  
SD205 #1705

SHEET No.

ME1

SDG FILE: ME1





A SANDER

B SANDER

C SANDER

D JOINTER

E JOINTER



F PLANER

G PORTABLE TABLE SAW

H PLYWOOD SAW

J BAND SAW



K BAND SAW

L TABLE SAW

M CHOP SAW



N CHOP SAW

OWNER'S EQUIPMENT	
A SANDER	
B SANDER	
C SANDER	
D JOINTER	THIS HAS A SHEET METAL HOOD WITH A 5-1/2" DIAMETER (IN AND OUT ARE NEARLY THE SAME) CONNECTION.
E JOINTER	THIS HAS A SHEET METAL HOOD WITH A 5-1/2" DIAMETER (IN AND OUT ARE NEARLY THE SAME) CONNECTION.
F PLANER	THIS EQUIPMENT HAS A 1" WIDE X 6-3/4" HIGH RECTANGULAR OPENING ON THE FACE OF THE EQUIPMENT. CONTRACTOR SHALL FABRICATE A COLLECTOR BOX TO TRANSITION FROM THE FACE OF THE PLANER TO A DUCT CONNECTION.
G PORTABLE TABLE SAW	PROVIDE DUCT DROP FOR CONNECTION OF PORTABLE SAW'S EXISTING FLEXIBLE CONNECTION WHEN SAW IS USED IN THE SHOP.
H PLYWOOD SAW	THERE IS A 5-1/4" SQUARE HOLE ON THE BACK FACE OF THIS SAW. THE HOLE IS AT THE TERMINATION OF A CHUTE THAT IS FORMED WHEN A SHEET OF PLYWOOD IS LAID IN THE CUTTING SURFACE. CONTRACTOR TO FABRICATE A BOX TO CONNECT A SOLID DUCT DROP TO THE BASE OF THE SAW AND REMOVE DUST THAT FALLS TO THE BOTTOM OF THE CHUTE.
J BAND SAW	
K BAND SAW	
L TABLE SAW	
M CHOP SAW	CONTRACTOR TO PROVIDE A DUST COLLECTION SYSTEM THAT WILL REMOVE 40% OF THE DUST GENERATED BY THIS EQUIPMENT. THIS MAY BE (2) 4" RADIAL ARM SAW HOODS ON EACH SIDE OF SAW OR A SINGLE HOOD BEHIND THE SAW. HOOD SHALL NOT INTERFERE WITH THE FULL RANGE OF OPERATION OF THE SAW.
N CHOP SAW	CONTRACTOR TO PROVIDE A DUST COLLECTION SYSTEM THAT WILL REMOVE 40% OF THE DUST GENERATED BY THIS EQUIPMENT. THIS MAY BE (2) 4" RADIAL ARM SAW HOODS ON EACH SIDE OF SAW OR A SINGLE HOOD BEHIND THE SAW. HOOD SHALL NOT INTERFERE WITH THE FULL RANGE OF OPERATION OF THE SAW.
MEASUREMENTS OF CONNECTIONS PROVIDED ARE FOR FRIGING ONLY. CONTRACTOR TO FIELD VERIFY ALL 1-X" INDICATES THE INTERIOR DIAMETER OF THE EXISTING CONNECTION. 2-X" INDICATES THE OUTSIDE DIAMETER OF THE EXISTING CONNECTION.	



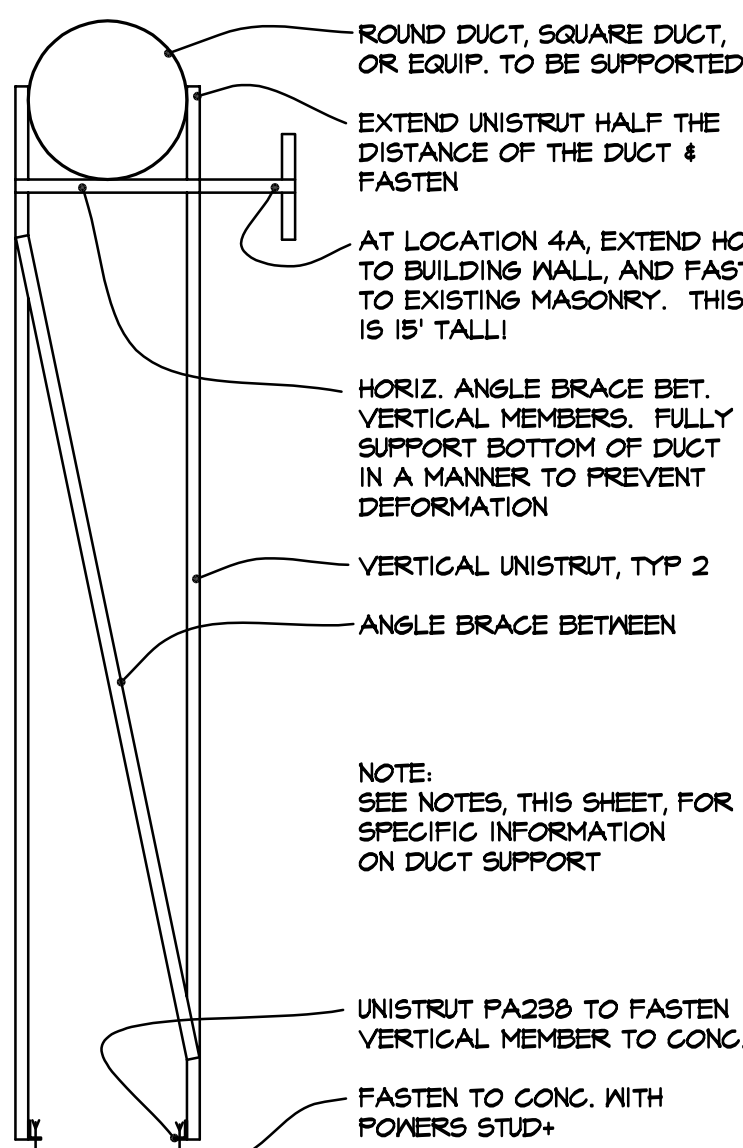
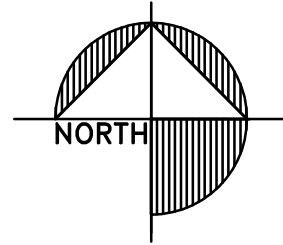
REVISED PLAN NOTES

1. NEW 6" CONCRETE SLAB ON GRADE INSIDE OF SCREEN WALL. SEE DETAILS THIS SHEET.
2. NEW 4" CONCRETE MALK. SLOPE FROM NEW EQUIPMENT SLAB TO STOOFF AT DOOR.
3. RE-INSTALL EXISTING GATE AND HARDWARE IN EXISTING OPENING. RE-BRINS AS INDICATED. ADJUST GATE HEIGHT AS REQ'D TO ACCOMMODATE NEW CONCRETE SLAB AND MALK.
4. NEW UNISTRUT SUPPORT FOR DUCTWORK. PROVIDE P100, 1-5/8"X1-5/8"X14GA UNISTRUT LEGS TO SUPPORT DUCTWORK. LEGS TO HAVE ONE ANGLE BRACE BETWEEN. LEGS TO SUPPORT HORIZONTAL CROSS MEMBER THAT IS SECURELY ATTACHED TO DUCTWORK / EQUIPMENT ABOVE. BASE OF EACH UNISTRUT LEG TO BE ATTACHED TO SLAB WITH 3" LONG SECTION OF #4236 2-3/8"X1-5/8"X1/4" LONG LEG VERTICAL, ANGLE ATTACHED TO CONCRETE SLAB WITH 1/2" DIAMETER POWERS POWER STUD. SD1 SET 2-1/4" INTO THE CONCRETE. SEE DETAIL 6, THIS SHEET FOR ADDITIONAL INFORMATION.
5. NEW UNISTRUT SUPPORT FOR DUCTWORK. PROVIDE P100, 1-5/8"X1-5/8"X14GA UNISTRUT LEGS TO SUPPORT DUCTWORK. FASTEN TO DUCTWORK PER DETAIL 6, THIS SHEET, AND SUPPORT FROM TOP OF EQUIPMENT. PROVIDE WRITTEN CONFORMATION FROM EQUIPMENT MANUFACTURER WITH INSTRUCTIONS FOR ACCEPTABLE ATTACHMENT METHODS. EXTEND ONE BRACE BACK TO BUILDING, SIMILAR TO DETAIL 6, THIS SHEET.
6. INFILL AREA OF EXISTING OPENING WHERE EXISTING DUCT WAS REMOVED. USE BRICKS SALVAGED FROM NEW OPENING FOR NEW DUCT. AT INTERIOR, PROVIDE NEW CMU FACE, FLUSH WITH EXISTING TO REMAIN. OWNER TO PRIME AND PAINT INTERIOR.
7. NEW OPENING FOR NEW DUCT THRU EXISTING WALL. PROVIDE SEALANT AND MORTAR FOR FINAL FINISHED APPEARANCE AND WATER TIGHT, AIR TIGHT CONDITION.
8. EXISTING OPENING, ENLARGED FOR NEW DUCT. PROVIDE SEALANT AND MORTAR FOR FINAL FINISHED APPEARANCE AND WATER TIGHT, AIR TIGHT CONDITION.
9. ATTACH COLLECTOR TO SLAB WITH 1" DIAMETER POWERS POWER STUD. SD1 SET MIN. 3-3/4" INTO THE CONCRETE. SEE COLLECTOR SUPPLIERS INFORMATION FOR LOCATION, SPACING, AND QUANTITY.

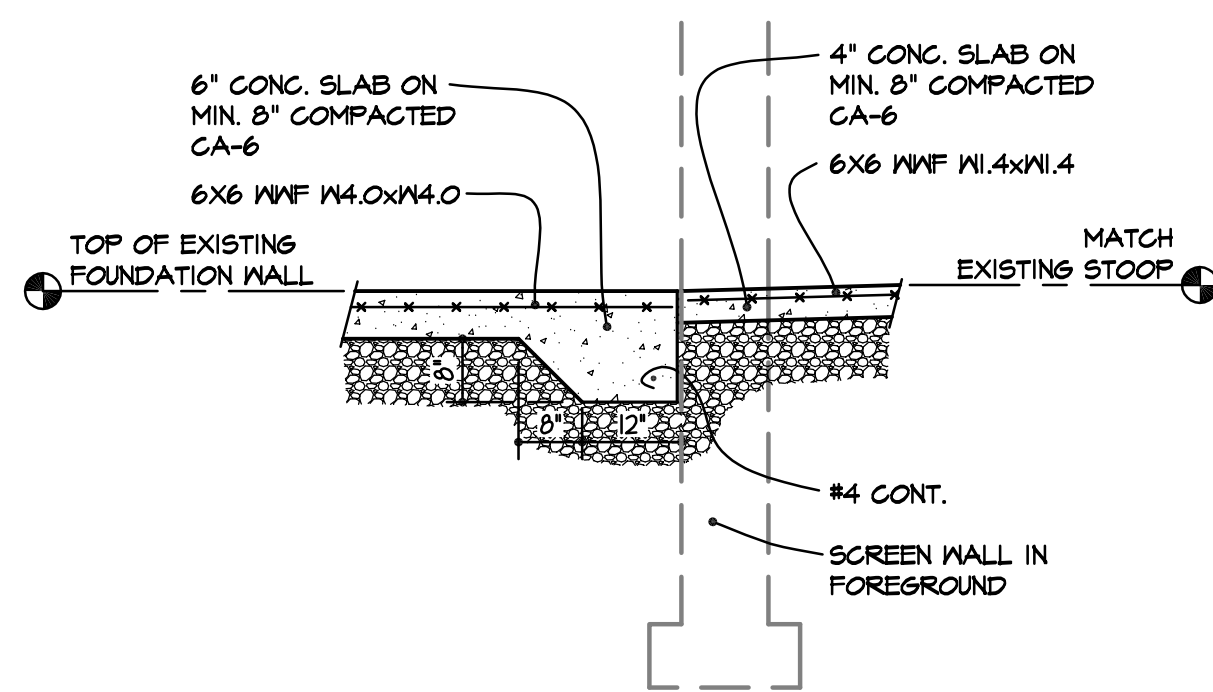
DEMOLITION PLAN NOTES

- D1. REMOVE CONCRETE SLAB SUPPORTING EXISTING DUST COLLECTOR.
- D2. REMOVE EXISTING DUST COLLECTOR, INCLUDING SUPPORTS BACK TO BUILDING. REMOVE ANCHORS AT BUILDING AND FILL WITH SEALANT, COLOR TO MATCH EXISTING. DISCONNECT EXISTING POWER FROM EXISTING DISCONNECT TO COLLECTOR. EXISTING DISCONNECT TO REMAIN.
- D3. REMOVE 14" OF EXISTING DIRT/SOIL, PLUS ADDITIONAL DEPTH AT PERIMETER TO PROVIDE PROPER BASE FOR NEW CONCRETE SLAB. NOTE: SD205 STAFF FEELS THE VEGETATION IN THIS AREA IS POISON IVY.
- D4. REMOVE ALL EXISTING DUCTWORK AT INTERIOR AND EXTERIOR. DUCTS MAY NOT BE RE-USED. HANGERS MAY. REMOVE ALL HANGERS NOT RE-USED, AND PATCH HOLES IN WALLS WITH MORTAR. PAINTING OF PATCHES BY SD205. DRAWING INDICATES KNOWN EXTENT OF IN-PLACE DUCTWORK, HOWEVER CONTRACTOR IS TO FIELD VERIFY EXACT PLACEMENT AND QUANTITIES AND REMOVE ALL IN-PLACE REGARDLESS IF SHOWN IN THE DEMOLITION DRAWING.
- D5. EXISTING DUST COLLECTION BAGS AND DUCTWORK TO BE REMOVED. REMOVE HANGER RODS.
- D6. REMOVE 10' OF EXISTING DIRT/SOIL TO PROVIDE PROPER BASE FOR NEW CONCRETE SIDEWALK.
- D7. INCREASE SIZE OF EXISTING HOLE THRU WALL FOR NEW LARGER DUCT. EXISTING DUCT IS 14", NEW DUCT IS 16". PATCH/REPAIR ALL DAMAGED SURFACES.
- D8. PROVIDE NEW 20" DIAMETER OPENING FOR NEW 20" DUCT. THE NEW DUCT, AS DRAWN, IS NOT IN THE SAME LOCATION AS THE EXISTING. IT IS ASSUMED THE NEW DUCT WILL BE IN A NEW LOCATION AND REQUIRE A NEW OPENING. SAVE FACE BRICK FROM THE NEW OPENING FOR RE-USE IN PATCHING THE HOLE.
- D9. REMOVE EXISTING GATE AND GATE HARDWARE. SAVE FOR RE-USE.

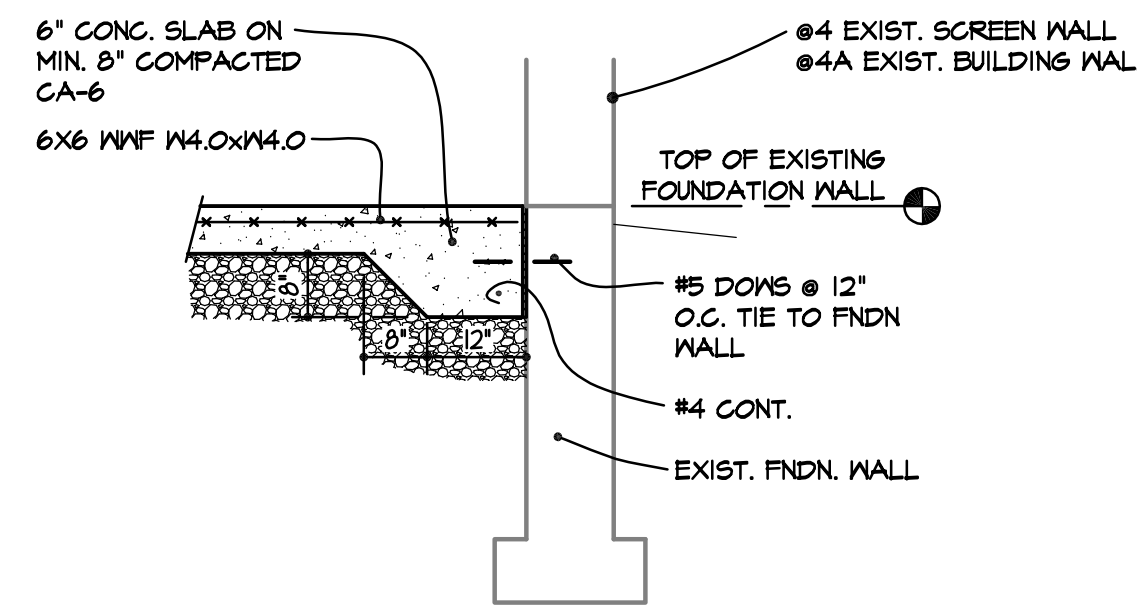
3 REVISED PLAN  
SCALE: 1/2" = 1'-0"



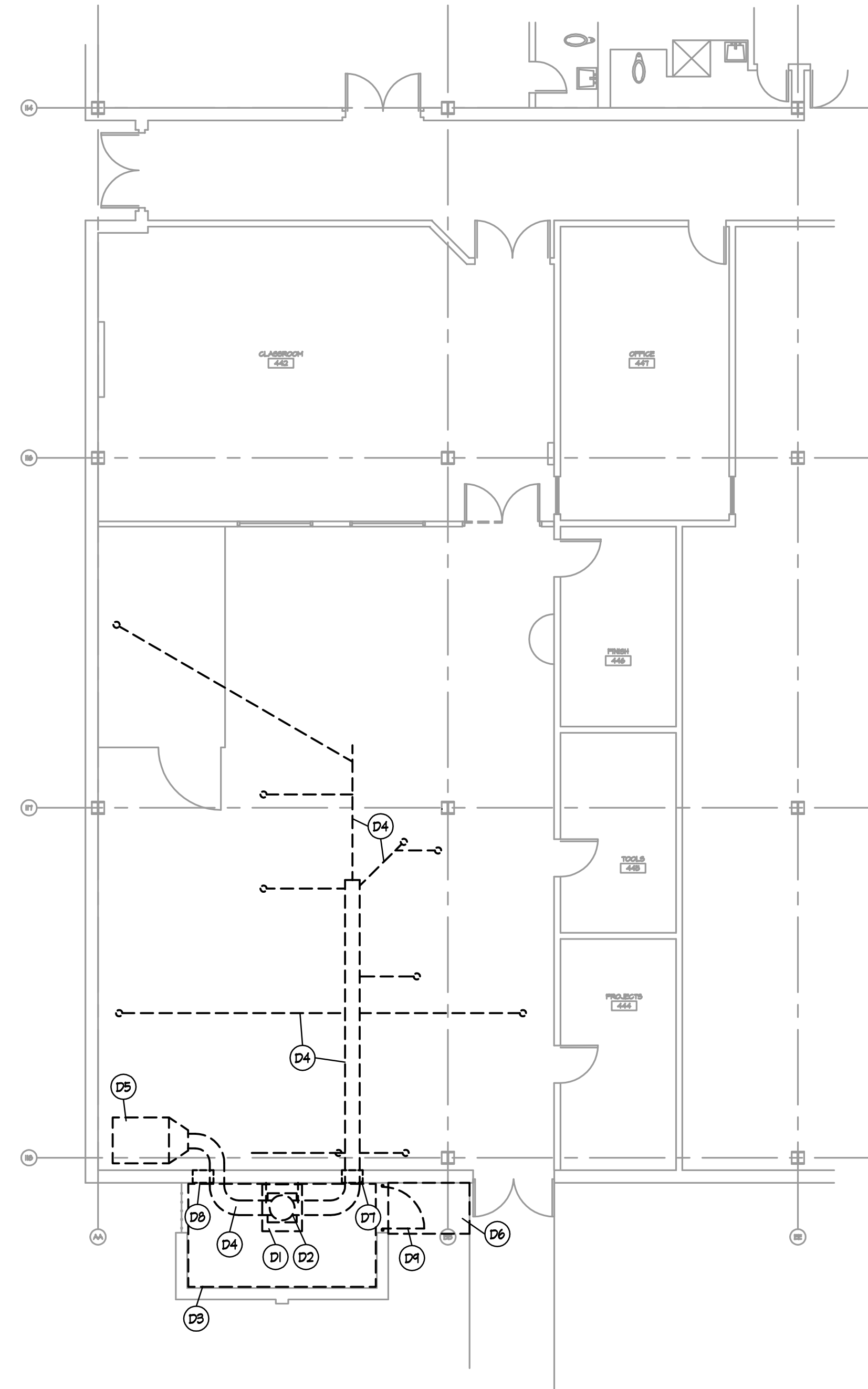
6 TYPICAL DUCT SUPPORT  
SCALE: 1/2" = 1'-0"



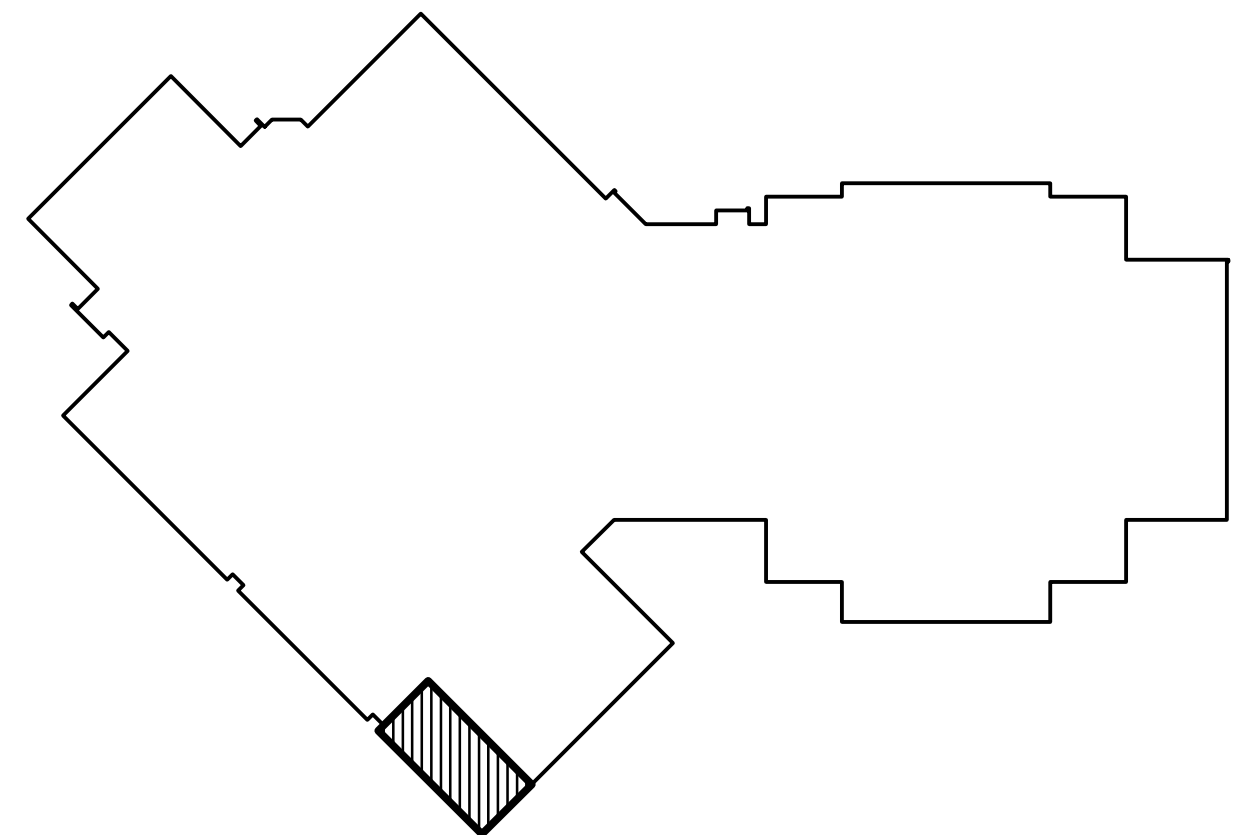
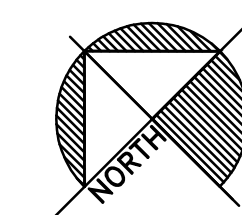
5 SLAB AT GATE  
SCALE: 1/2" = 1'-0"



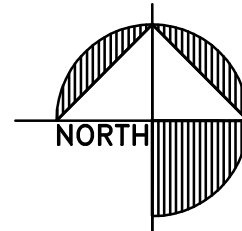
4 4A SLAB EDGE DETAIL  
SCALE: 1/2" = 1'-0"



2 DEMOLITION PLAN  
SCALE: 1/8" = 1'-0"



1 KEY PLAN  
SCALE: NONE



REV.



OWNERS EQUIPMENT
A DRUM SANDER
B FUTURE TABLE DRUM SANDER
C TABLE DRUM SANDER
D TABLE BELT/DISK SANDER
E TABLE BELT/DISK SANDER
F BELT SANDER
G LATHE - NO CONNECTION
H PLANER MODIFY EXISTING EQUIPMENT TO ACCEPT NEW CONNECTION.
I DRILL PRESS 3" DIA CLEAN-UP SHARED WITH DRILL PRESS J
J DRILL PRESS 3" DIA CLEAN-UP SHARED WITH DRILL PRESS I
K GRINDER - NO CONNECTION
L MITER SAW
M TABLE TOP LATHE
N FUTURE ROUTER TABLE
O ROUTER TABLE
P ROUTER TABLE
Q MITER SAW
R BAND SAW MODIFY EXISTING SAW TO ACCEPT NEW CONNECTION. NONE PRESENT.
S BAND SAW SAW HAS TWO EXISTING CONNECTIONS. VERIFY WORKABILITY OF EXISTING, ELSE REMOVE/REPLACE AS REQ'D TO REMOVE DUST.
T BAND SAW MODIFY EXISTING SAW TO ACCEPT NEW CONNECTION. NONE PRESENT.
U BAND SAW
V SCROLL SAW 3" DIA CLEAN-UP SHARED WITH SCROLL SAWS W AND X
W SCROLL SAW 3" DIA CLEAN-UP SHARED WITH SCROLL SAWS X AND V
X SCROLL SAW 3" DIA CLEAN-UP SHARED WITH SCROLL SAWS V AND W
Y MOBILE TABLE SAW IDENTICAL TO Z. BACK FACE Y' SHOWN
Z MOBILE TABLE SAW IDENTICAL TO Y. FRONT FACE Z' SHOWN
AA SCROLL SAW 3" DIA CLEAN-UP SHARED WITH SCROLL SAW BB
BB SCROLL SAW 3" DIA CLEAN-UP SHARED WITH SCROLL SAW AA
CC BAND SAW MODIFY EXISTING SAW TO ACCEPT NEW CONNECTION. NONE PRESENT.
DD DISC SANDER AND BELT SANDER COMBO
EE JOINTER
FF DISC SANDER AND BELT SANDER COMBO
GG SHAPER TABLE
HH SANDER
MEASUREMENTS OF CONNECTIONS PROVIDED ARE FOR PRICING ONLY. CONTRACTOR TO FIELD VERIFY ALL!
BG = BLAST GATE, TO ALLOW CLOSING OF THIS CONNECTION TO PROVIDE ADEQUATE FLOW IN THE SYSTEM. ALL EQUIPMENT WILL NOT BE RUN AT THE SAME TIME. CONTRACTOR SHALL PROVIDE THE OWNER TRAINING ON CORRECT OPERATION AND BALANCING OF THE SYSTEM USING THE BLAST GATES.

COLLECTION EQUIPMENT
A 5,000 CFM SELF-CONTAINED DUST COLLECTOR WITH MIN. (2) 55 GALLON DRUM COLLECTION. EQUAL TO UAS MODEL SDC 700 WITH UAS MODEL SF55DD FAN.
B FAN OUTLET SILENCER CAPABLE OF LIMITING NOISE OUTPUT TO 80dBA, or less.
C NO RETURN VALVE EXPLOSION ISOLATION VALVE AND CONTROL PANEL FOR SYSTEM SHUT DOWN, DUST LEVEL, AND POWER INTEGRATION.
D SUPPLY GRILLE ON END OF DUCT. INDUSTRIAL ROUND DIFFUSER, STEEL, EQUAL TO GARNES MODEL 95DB.

MECHANICAL PLAN NOTES
M1 PROVIDE 3" DROP WITH BLAST GATE. TERMINATE APPROX 36" AFF. PROVIDE TRANSITION TO 1-1/2" FLEXIBLE TUBE. PROVIDE 8" OF FLEXIBLE TUBE TO BE USED FOR CLEAN-UP OF EQUIPMENT IN THIS LOCATION. NO CONNECTION TO EQUIPMENT. SD205 TO PROVIDE "HOOK" FOR STORAGE OF HOSE WHEN NOT IN USE.
E1 EXISTING DISCONNECT FOR EXISTING COLLECTOR. EQUIPMENT SUPPLIER TO VERIFY POWER AVAILABLE IS ADEQUATE FOR COLLECTOR UNIT TO BE PROVIDED. NOTIFY ARCHITECT AND PROJECT MANAGER IMMEDIATELY IF EXISTING POWER IS NOT ACCEPTABLE. COORDINATE WITH ELECTRICAL CONTRACTOR. ELECTRICAL CONTRACTOR TO PROVIDE PROPER OVER CURRENT PROTECTION, AND MODIFY EXISTING AS REQUIRED BY NEW EQUIPMENT.
E2 ELECTRICAL CONTRACTOR TO PROVIDE NEW 120V, 20A, 1PH, WEATHERPROOF, 5FCU, CONVENIENCE RECEPTACLE FOR MAINT. OF NEW EQUIPMENT.
E3 PROVIDE NEW 120V POWER FOR BLAST GATE CONTROLS FROM NEAREST AVAILABLE SOURCE. ELECTRICAL CONTRACTOR TO COORDINATE REQUIREMENTS WITH EQUIPMENT SUPPLIER.

DUCTWORK ALTERNATIVES
BASE BID: PROVIDE STANDARD, SINGLE WALL, 6-10, GALVANIZED, SPIRAL DUCT FOR DUST COLLECTION Up to 8" dia. 24 GA 8" to 14" dia. 22 GA 15" to 24" dia. 18 GA
ELBOYS AND BRANCHES TO BE TWO (2) GAUGES HEAVIER THAN STRAIGHT PIPE OF EQUAL DIAMETER.
ADJUSTABLE ELBOYS AND 90 DEGREE TEES ARE NOT TO BE PROVIDED.
ELBOYS TO BE MINIMUM OF 1.5 CENTERLINE RADIUS.
BRANCH ENTRANCE LEGS TO BE 45 DEGREE. 90 DEGREE TEES ARE NOT TO BE PROVIDED!
STANDARD SLIP FIT CONNECTIONS WITH COUPLINGS.
ALTERNATE BID: PROVIDE SINGLE WALL, 6-10, GALVANIZED, CLAMP TOGETHER, STANDARD GASKETED, DUCTWORK BY Nordfab, Duct Inc, OR EQUAL FOR DUST COLLECTION
ELBOYS TO BE MINIMUM OF 1.5 CENTERLINE RADIUS.
BRANCH ENTRANCE LEGS TO BE 45 DEGREE. 90 DEGREE TEES ARE NOT TO BE PROVIDED!
FULLY WELDED, LEAK-TIGHT SEAMS.

SYMBOL KEY
EXHAUST DUCT SHOWN ACTUAL SIZE
EXHAUST DUCT SHOWN AS SINGLE LINE
DUCT DROP
CLEAN AIR RETURN SHOWN ACTUAL SIZE
AIR RETURN GRILLE/RESISTER
WIRE RUN TO PANEL
120V CONVENIENCE RECEPTACLE PROVIDE WEATHERPROOF AND 5FCU AS REQ'D AT EXTERIOR
DISCONNECT

DISCONNECT SWITCHES
ALL ELECTRICAL DISCONNECT SWITCHES SHALL BE FURNISHED & INSTALLED BY THE ELECTRICAL CONTRACTOR. EACH DISCONNECTING MEANS SHALL BE LEGIBLY MARKED TO INDICATE ITS PURPOSE UNLESS LOCATED AND ARRANGED SO THE PURPOSE IS EVIDENT. MARKING SHALL BE SUFFICIENT TO WITHSTAND THE ENVIRONMENT INVOLVED.

BELLES FIRM OF

architecture

2905 Creekside Court, Suite 'B', Rockford, IL 61114  
(815)-961-0504 BellesFirm@yahoo.com  
License No. 184-001868

2 DUCT LAYOUT ELEVATION  
SCALE: 1/4" = 1'-0"

1 MECHANICAL PLAN  
SCALE: 1/4" = 1'-0"

CONSTRUCTION LAB DUST COLLECTION SYSTEM

PROJECT

ROCKFORD PUBLIC SCHOOLS

JEFFERSON HIGH SCHOOL

4145 SAMUELSON STREET  
ROCKFORD, ILLINOIS

DRAWN

BFA

DATE

07-01-2016

PROJECT No.

984B  
SD205 #1706

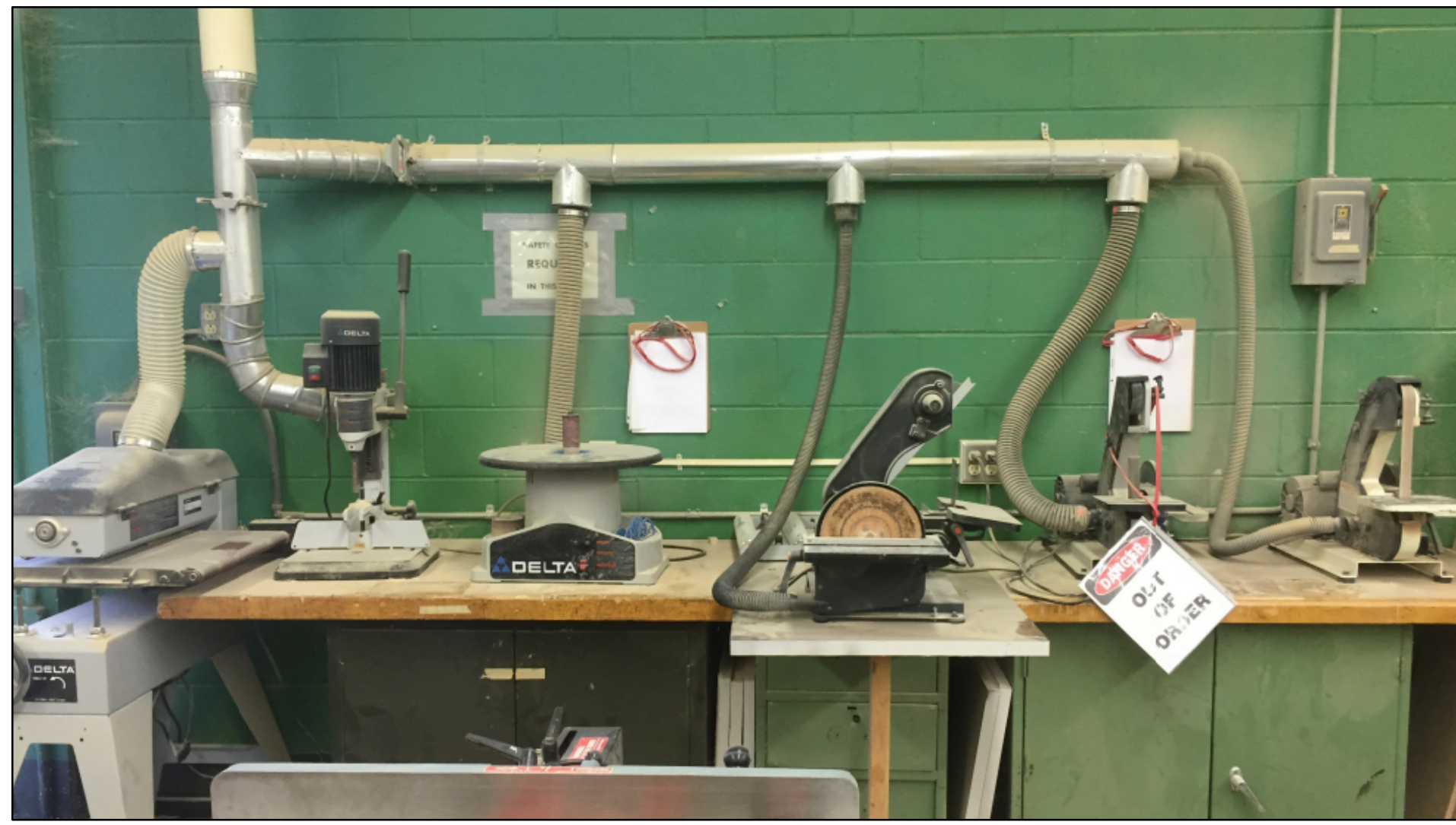
SHEET No.

ME1.1

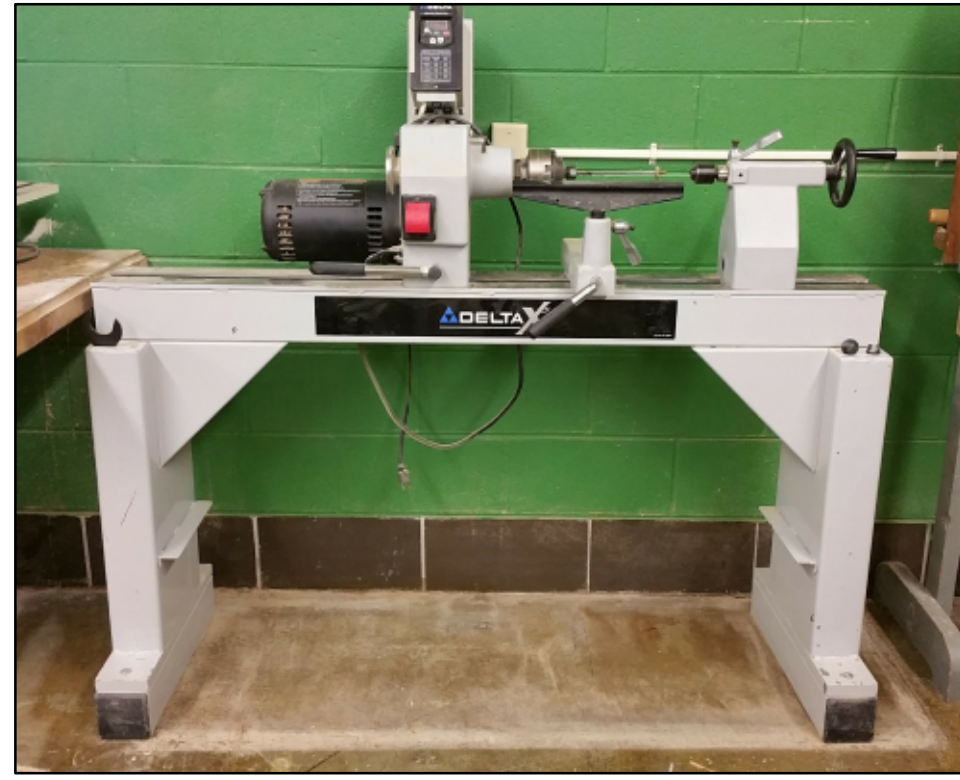
1845 FILE ME1

152





A DRUM SANDER  
D BELT/DISK SANDER  
F BELT SANDER  
C DRUM SANDER  
E BELT/DISC SANDER  
B FUTURE TABLE DRUM SANDER



G LATHE  
NO CONNECTION



H PLANER



I DRILL PRESS  
3" CLEAN UP  
K GRINDER  
NO CONNECTION  
J DRILL PRESS  
3" CLEAN UP  
L MITER SAW



L MITER SAW



M TABLE TOP LATHE  
NO CONNECTION



O ROUTER TABLE

P ROUTER TABLE

Q MITER SAW



O ROUTER TABLE  
P ROUTER TABLE



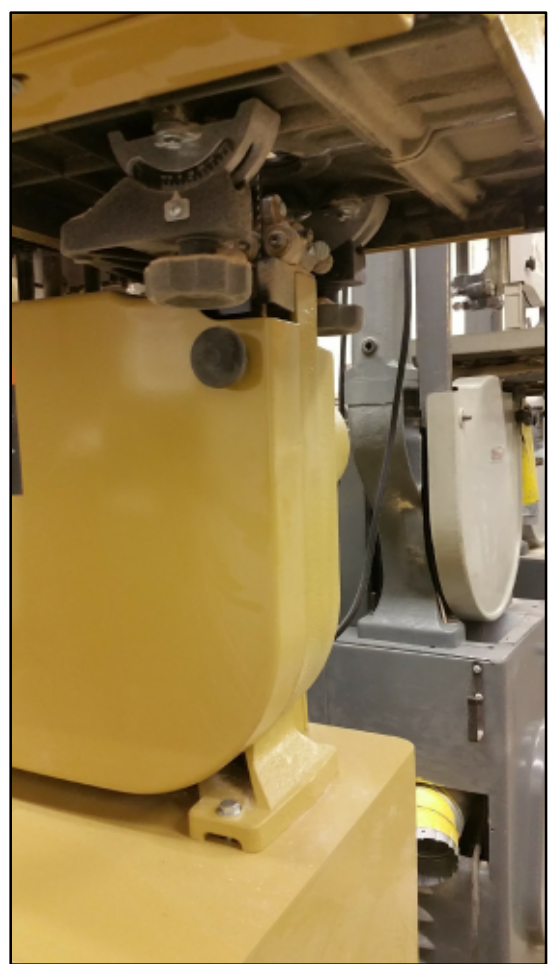
R BAND SAW



S BAND SAW



T BAND SAW



U BAND SAW



X SCROLL SAW

V SCROLL SAW

W SCROLL SAW



Y Z MOBILE TABLE SAW  
BACK FACE



Z Y MOBILE TABLE SAW  
FRONT FACE

OWNER'S EQUIPMENT  
SEE SHEET ME1 FOR LIST OF OWNER'S EQUIPMENT

BELLES FIRM OF  
architecture  
2905 Creekside Court, Suite 'B', Rockford, IL 61114  
(815)-961-0504 BellesFirm@yahoo.com  
License No. 184-001868

REV.

CONSTRUCTION LAB DUST COLLECTION SYSTEM  
PROJECT  
DRAWN  
R&B  
DATE  
07-01-2016  
PROJECT No.  
984B  
SD205 #1706  
SHEET No.  
ME2.1





AA SCROLL SAW

BB SCROLL SAW



CC BAND SAW



DD DISK/BELT SANDER



EE JOINTER



FF DISK/BELT SANDER

GG SHAPER TABLE

REV.

CONSTRUCTION LAB DUST COLLECTION SYSTEM



**JEFFERSON HIGH SCHOOL**  
4445 SAMUELSON STREET  
ROCKFORD, ILLINOIS

DRAWN

R&B

DATE

07-01-2016

PROJECT No.

**984B**  
SD205 #1706

SHEET No.

**ME3.1**

**OWNER'S EQUIPMENT**

SEE SHEET ME1 FOR LIST OF OWNER'S EQUIPMENT