

IFB 23-23 - KENNEDY ROOF REPLACEMENT



KENNEDY MIDDLE SCHOOL:

LOCATION: ROCKFORD PUBLIC SCHOOL DISTRICT #205
520 N. PIERPONT AVE.
ROCKFORD, IL 61101

ARCHITECT: 1919 ARCHITECTS
4000 MORSAY DRIVE
ROCKFORD, IL 61107



1
G-1.0 KENNEDY ELEMENTARY SITE PLAN
SCALE: NTS
RPS #2236

NORTH

THESE DOCUMENTS ARE COPYRIGHTED. REPRODUCTION OF THIS DRAWING, BY ANY PHOTOGRAPHIC, XEROGRAPHIC OR OTHER SIMILAR TECHNIQUE OR PROCESS, DURING THE BIDDING PERIOD OR FOR INCORPORATING THE MATERIAL CONTAINED HEREON INTO A SHOP DRAWING, IS STRICTLY PROHIBITED WITHOUT THE EXPRESSED CONSENT OF 1919 ARCHITECTS P.C.
© 2022 1919 ARCHITECTS, P.C.

SHEET INDEX

GENERAL	
G-1.0	COVER SHEET
ARCHITECTURAL	
A-1.0	KENNEDY ROOF PLAN
A-2.0	KENNEDY ROOF PLAN
A-3.0	DETAILS

STATEMENT OF COMPLIANCE

I have prepared, or caused to be prepared under my direct supervision, the attached plans and specifications and state that, to the best of my knowledge and belief and to the extent of my contractual obligation, they are in compliance with the Environmental Barriers Act (410 ILCS 25 Code, (71 Ill. Adm. Code 400.) and the Illinois Accessibility

Signed: _____
Architect/Engineer
ILLINOIS REGISTRATION NO.: 001-015480
Exp. Date: 11/30/22
PROFESSIONAL DESIGN FIRM NO.: 184.003452

MATERIAL INDICATIONS

	EARTH		ROUGH WOOD
	GRAVEL OR SAND FILL		FINISH WOOD
	CONCRETE		PLYWOOD
	BRICK MASONRY		VAPOR BARRIER
	BRICK MASONRY		LOOSE OR BATT INSULATION
	RIGID INSULATION		

GRAPHIC SYMBOLS

DETAIL OR SECTION	DETAIL NO.
	SHEET NO.
DOOR SYMBOL	
ELEVATION SYMBOL	

1919 Architects
4000 Morsay Drive
Rockford, IL 61107
(815) 223-8222
www.1919architects.com

ROOF REPLACEMENT AND REPAIRS

1506 CLOVER AVE.
ROCKFORD, IL 61103

Project Number: 21-15410 Date: 04-12-2022 Rev. Date: JMK App. ROE

COVER SHEET

Sheet No:
G-1.0

GENERAL NOTES (THIS SHEET ONLY)

GENERAL NOTES (THIS SHEET ONLY)

- GENERAL NOTES (THIS SHEET ONLY)

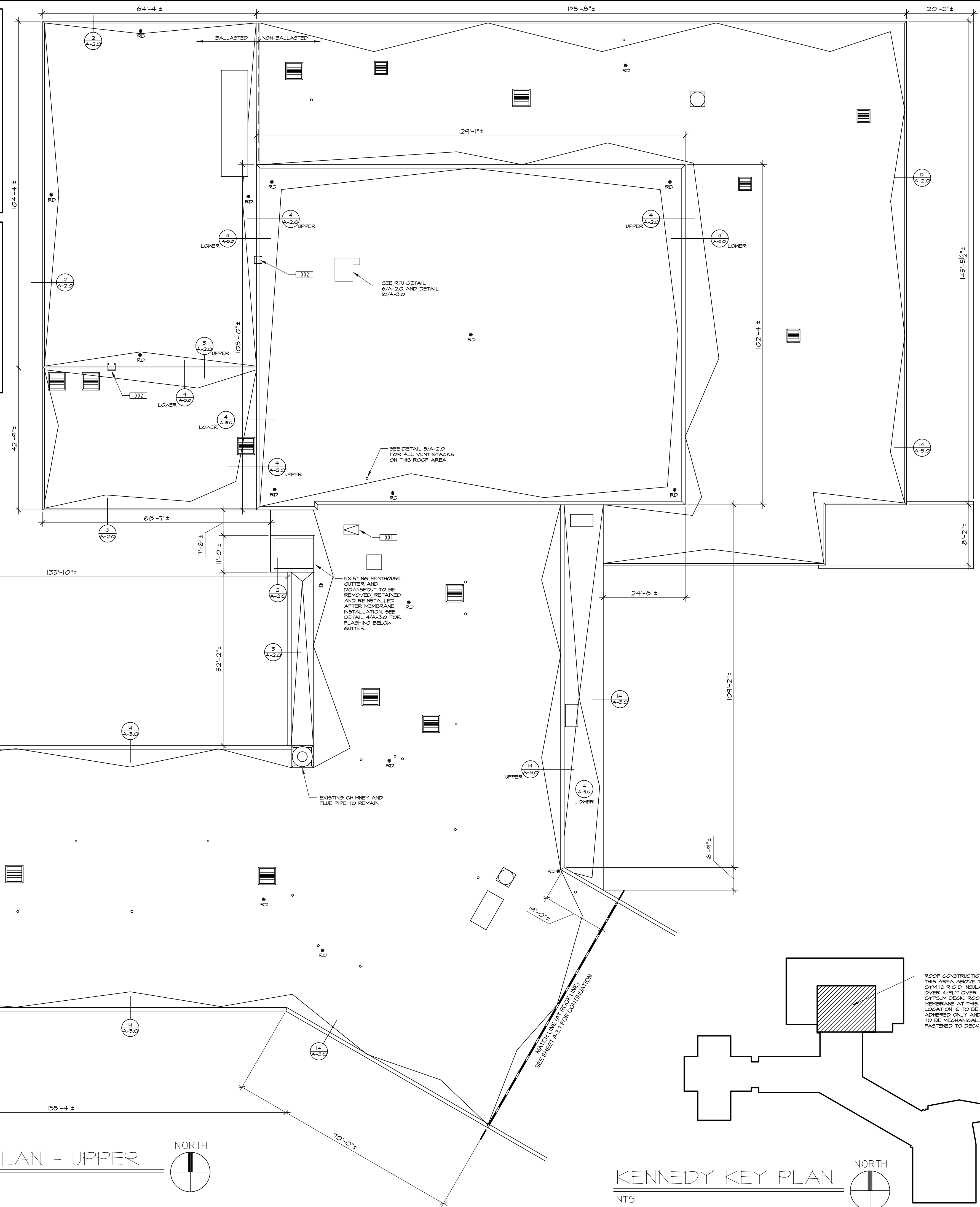
LEGEND OF SYMBOLS (THIS SHEET ONLY)

LEGEND OF SYMBOLS (THIS SHEET ONLY)

- LEGEND OF SYMBOLS (THIS SHEET ONLY)

KEYNOTES

- ## KEYNOTES

1919
Architects

1919 Architects

1919 Architects

www.1919architects.com

YOUTH PLACEMENT AND SUPPORT

1008 CLOVER AVE.
ROCKFORD, IL 61102

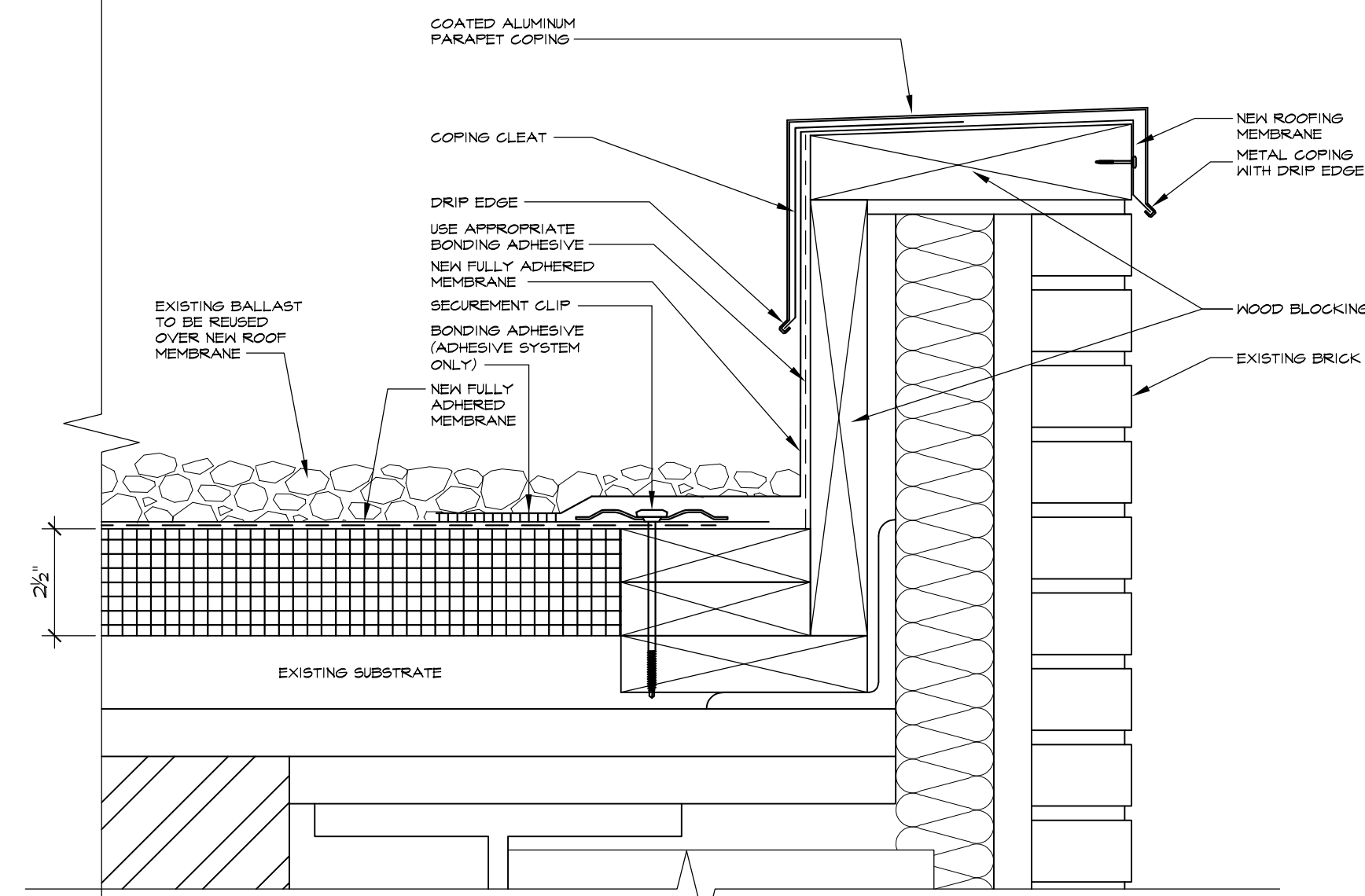
1020 N. LINCOLN AVE.
ROCKFORD, IL 61103

Project Number	Date	Dm.	Appd.
2-3910	09-2-2022	✓	✓

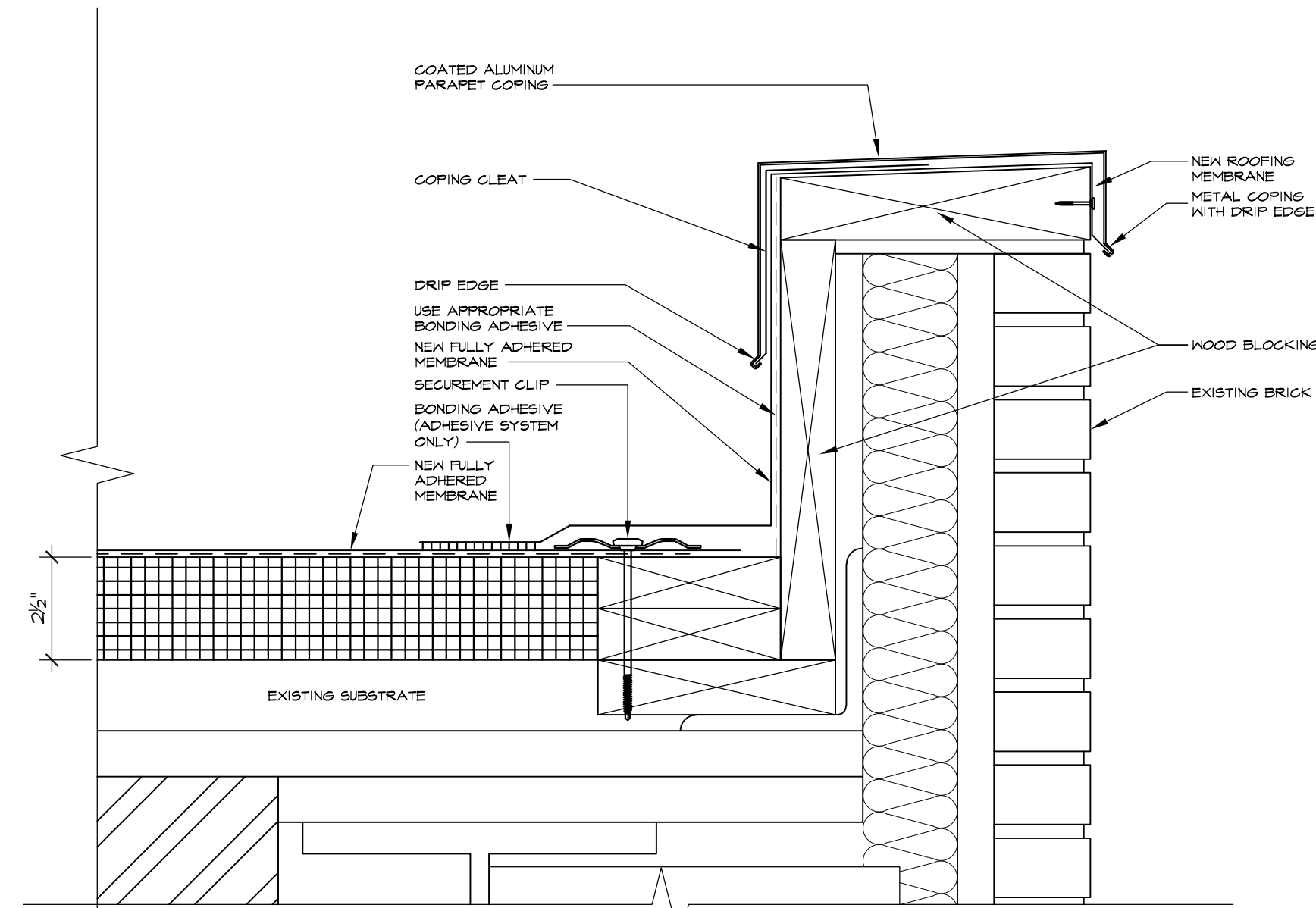
v. Date

Sheet No:

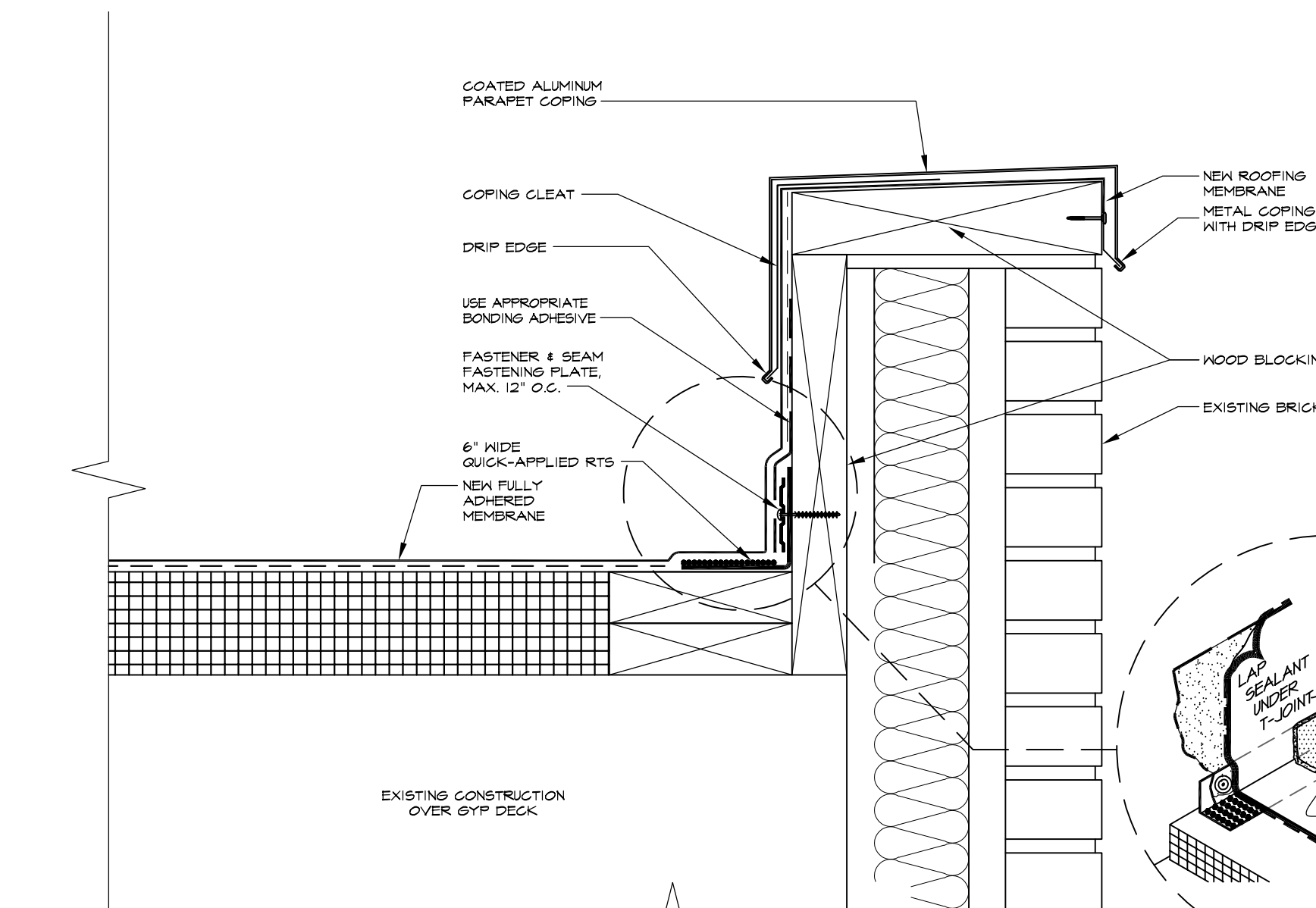
$$A = 1.0$$



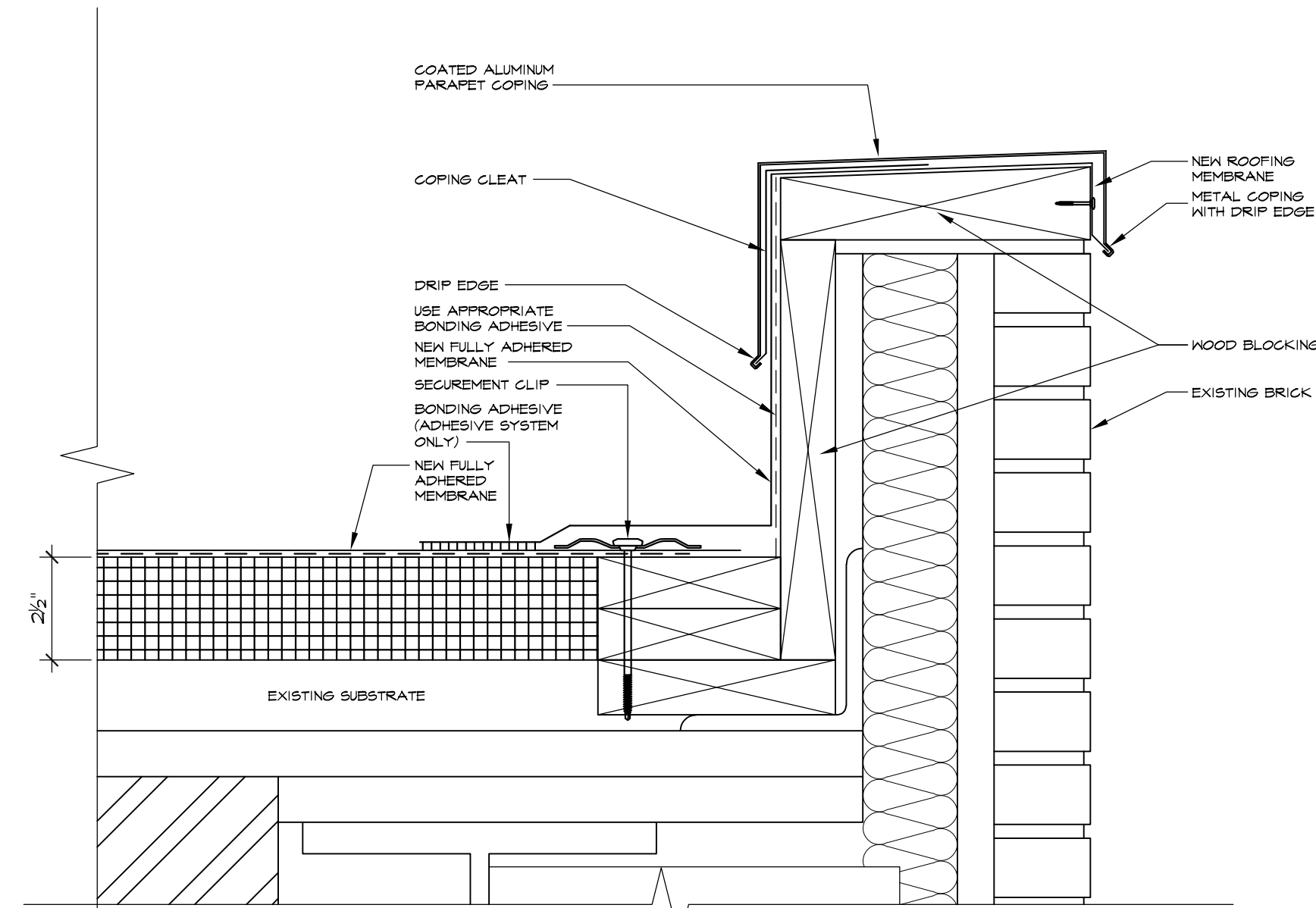
2
A-2.0
ROOF EDGE DETAIL
SCALE: 3" = 1'-0"



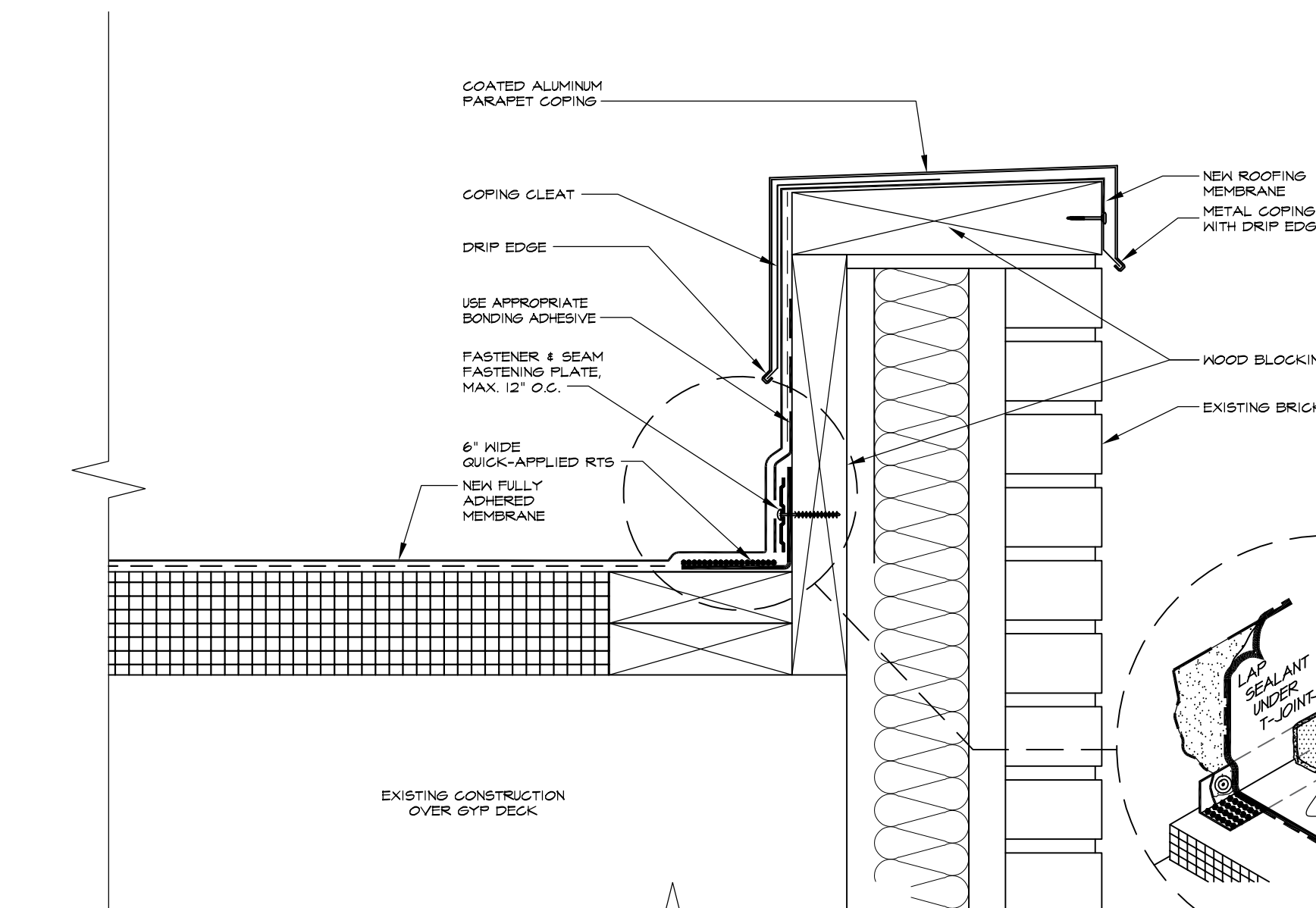
3
A-2.0
ROOF EDGE DETAIL
SCALE: 3" = 1'-0"



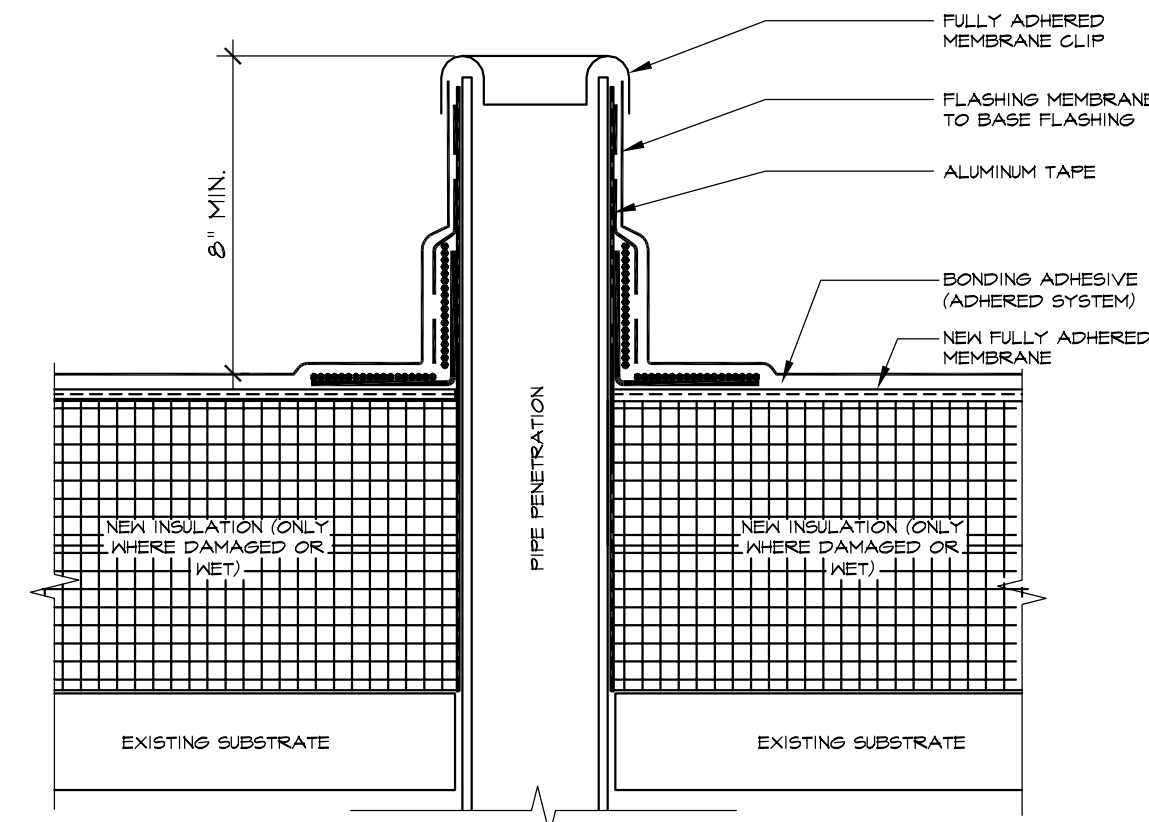
4
A-2.0
ROOF EDGE DETAIL @ GYPSUM DECK
SCALE: 3" = 1'-0"



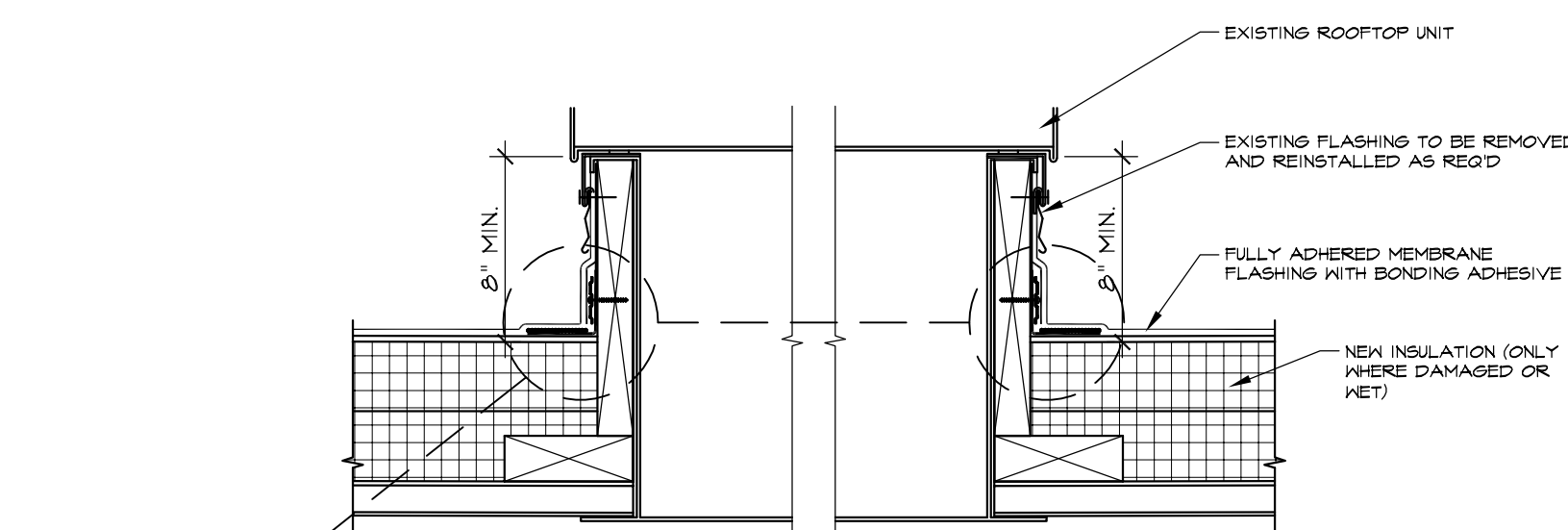
3
A-2.0
ROOF EDGE DETAIL
SCALE: 3" = 1'-0"



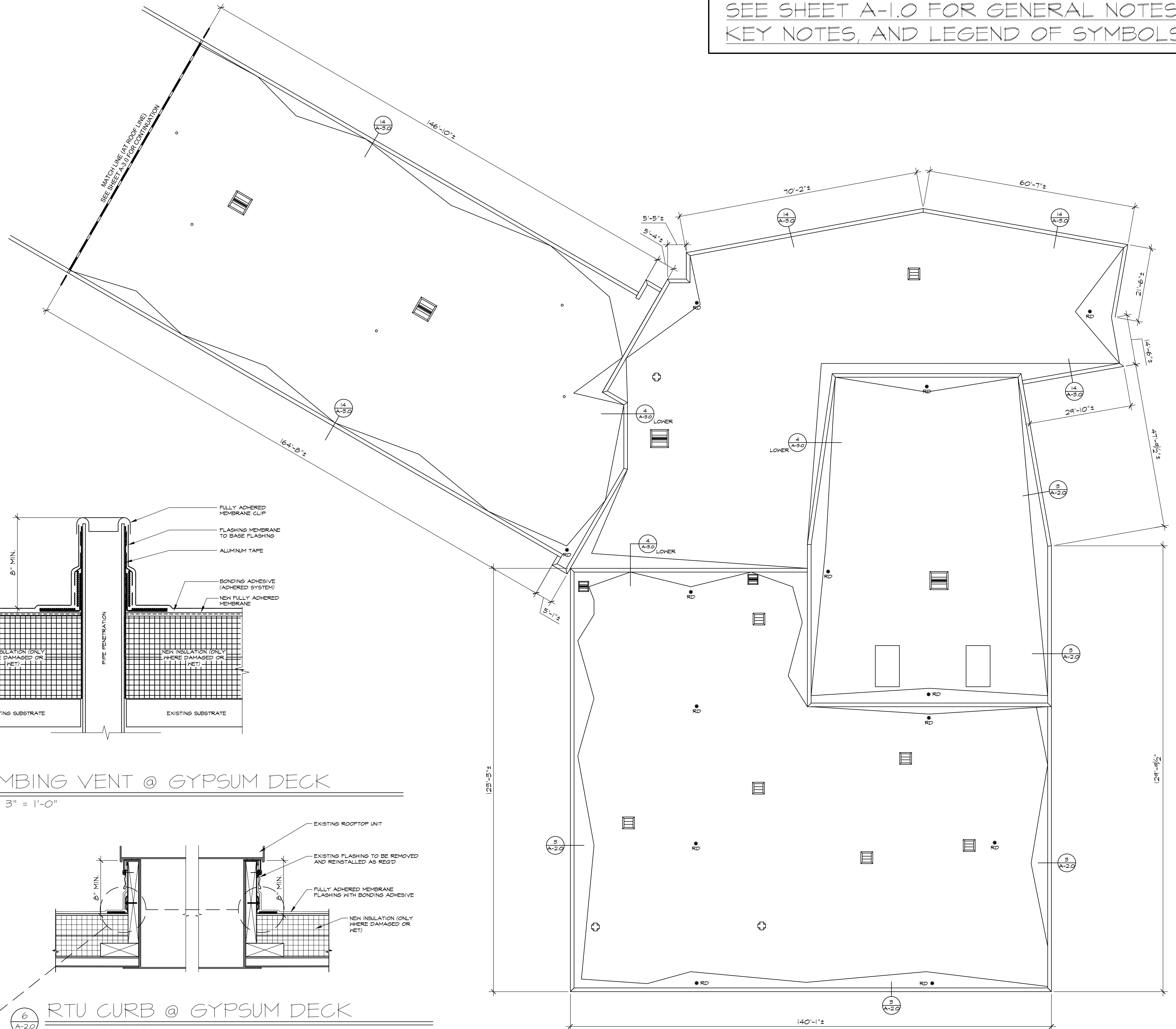
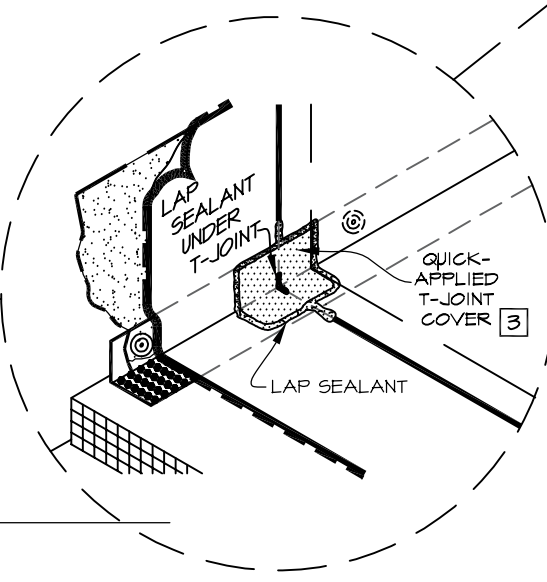
4
A-2.0
ROOF EDGE DETAIL @ GYPSUM DECK
SCALE: 3" = 1'-0"



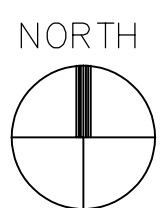
5
A-2.0
PLUMBING VENT @ GYPSUM DECK
SCALE: 3" = 1'-0"



6
A-2.0
RTU CURB @ GYPSUM DECK
SCALE: 3" = 1'-0"



1
A-2.0
KENNEDY SCHOOL ROOF PLAN - LOWER
SCALE: 1/16" = 1'-0"



SEE SHEET A-1.0 FOR GENERAL NOTES,
KEY NOTES, AND LEGEND OF SYMBOLS

1919
Architects

1919 Architects
4000 Morsay Drive
Rockford, IL 61107
(815) 223-8222
www.1919architects.com

ROOF REPLACEMENT AND REPAIRS			
ARCHITECT	OWNER	CONTRACTOR	BONDING CO.
1919 ARCHITECTS	520 N. PIERPONT AVE. ROCKFORD, IL 61103	ROB JMK	APPD
Project Number	21-15410	Date	04-12-2022

KENNEDY ROOF PLAN	
Rev. Date	
Sheet No.	A-2.0

1
A-3.0

ROOF EQUIPMENT CURB DETAIL

SCALE: 3" = 1'-0"

2 ROOF PLUMBING VENT
A-3.0
SCALE: 3" = 1'-0"

3
A-3.0

ROOF EXPANSION JOINT DETAIL

SCALE: 3" = 1'-0"

4
A-3.0

WALL COUNTERFLASHING DETAIL

SCALE: 3" = 1'-0"

5
A-3.0

RTU CURB DETAIL

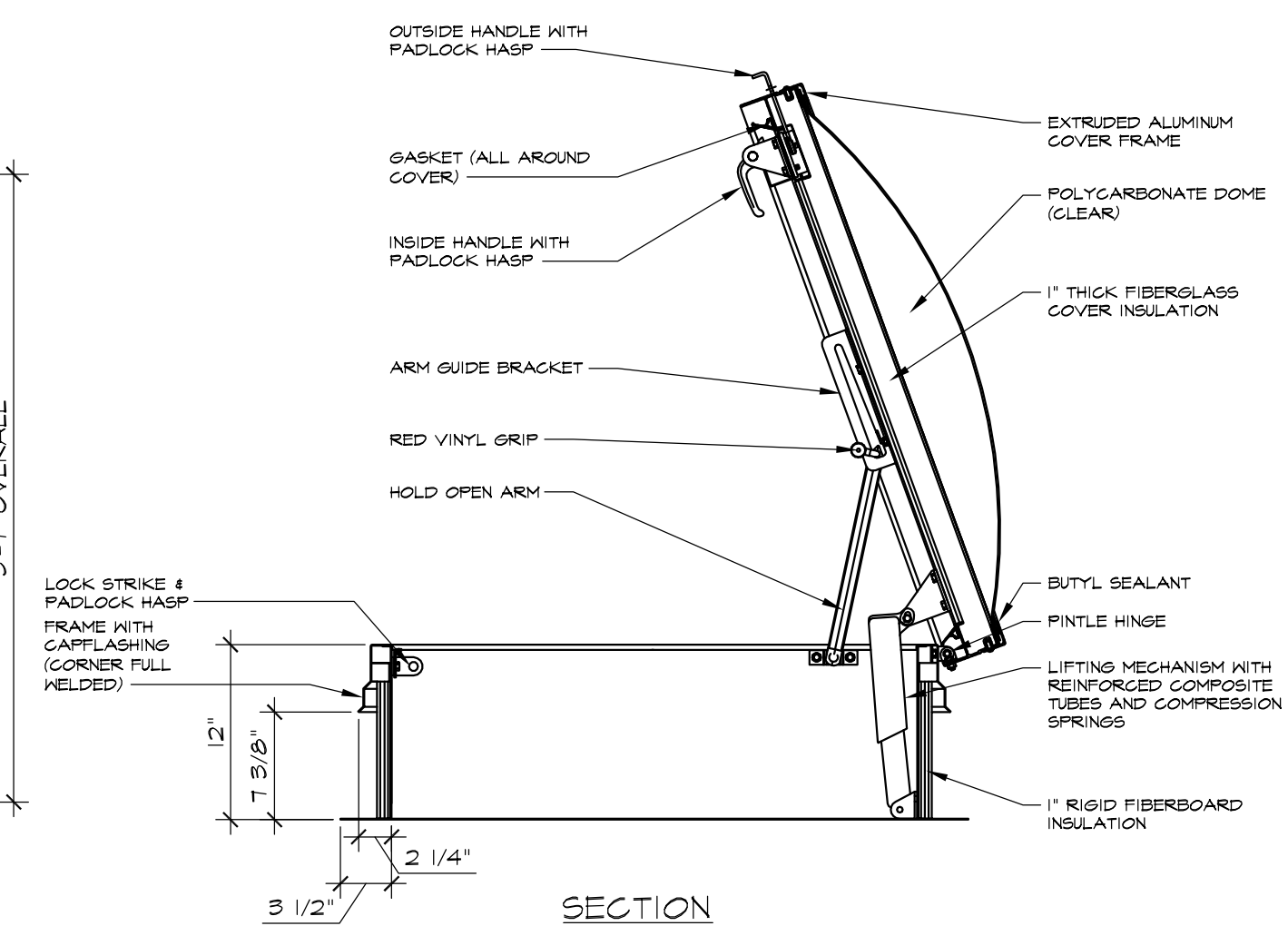
SCALE: 1 1/2" = 1'-0"

6 ROOF POWER VENT
A-3.0
SCALE: 1 1/2" = 1'-0"

TYPICAL LAP
SPlice/WELD DETAIL

7
A-3.0

SCALE: 6" = 1'-0"



9
A-3.0

ROOF DRAIN DETAIL

SCALE: 12" = 1'-0"

- NOTES (9/A=4.0):
1. HOLE IN MEMBRANE SHOULD EXTEND A MINIMUM OF 4" BEYOND CLAMPING RING AND SHOULD NOT BE SMALLER THAN THE DIAMETER OF THE LEADER PIPE.
 2. INSULATION ADJACENT TO DRAIN TO BE APPROPRIATE INSULATION WITH APPROPRIATE BONDING SURFACE.
 3. WATERBLOCK MIN. OF 1002 TYPE PER 4" DRAIN USE ADDITIONAL WATER BLOCK FOR LARGER DRAINS.
 4. IN REROOF APPLICATIONS:
 - REMOVE EXISTING LEADERS DOWN TO METAL BOARDS
 - REPAIR OR REPLACE BROKEN DRAIN DRAIN COMPONENTS
 - REMOVE AND TAP BROKEN DRAIN BOLTS AND REPLACE IF NECESSARY
- SUMP AREA FIELD SEAM REQUIREMENTS:
- A. IF SEAM EDGE IS WITHIN 9" OF DRAIN COMPRESSOR RING TWO TARGET PATCH REQUIRED.
 - B. IF FIELDS SEAM EDGE IS WITHIN 9" TO 16" OF DRAIN COMPRESSOR RING TWO TARGET PATCH REQUIRED. IF SEAM IS NOT HELD A LAYER OF ULTRAFLY TOP FLASHING IS REQUIRED. (UNSUPPORTEED) OR ULTRAFLY TOP MEMBRANE CENTERED OVER SEAM EDGE. FLASHING MUST EXTEND 3" BEYOND SEAM.

10
A-3.0

ROOF PENETRATION POCKET

SCALE: 3" = 1'-0"

- NOTES (10/4-4)
- 1. REMOVE ALL EXISTING FLASHING, LEAD, ETC. PIPE SURFACE MUST BE FREE OF ALL RUST, GREASE, INSULATION, ETC.
- 2. POORABLE SEALER MOUNTED TO SHED WATER. MINIMUM OF 2" REMAINDER OF POCKET MAY BE FILLED IN NON-SHRINK GROUT.
- 3. DO NOT USE OVER EXISTING PENETRATION POCKETS.
- 4. DO NOT USE WHEN SERVICE LIFT, EXCEEDS 180 DEGREES.
- 5. IF FIELD MEMBRANE IS CUT FOR INSTALLATION, THE MEMBRANE MUST BE REPAIRED WITH PVC MEMBRANE PRIOR TO INSTALLATION OF THE PENETRATION POCKET.
- 6. MEMBRANE MUST BE INSTALLED WITHIN 1/2" OF PENETRATION.
- 7. PLUS REQUIRED ON PENETRATIONS AND MEMBRANE INSIDE OF PENETRATION POCKET.

8
A-3.0

ROOF HATCH DETAIL

SCALE: 1" = 1'-0"

13 NEW LADDER DETAIL
A-3.0
SCALE: 3/4" = 1'-0"

PIPE PENETRATION
SCALE: 3" = 1'-0"

SECTION AT ROOF HATCH

SCALE: 1 1/2" = 1'-0"

14
A-3.0

ROOF EDGE DETAIL

SCALE: 3" = 1'-0"