



**ROCKFORD BOARD OF EDUCATION
INVITATION FOR BID ON SUPPLIES, MATERIALS, EQUIPMENT OR SERVICES
FOR SCHOOL DISTRICT NO. 205
ROCKFORD, ILLINOIS**

IFB No. **17-08 East & Jefferson High School Dust Collections**

DATE: **Wednesday, August 24, 2016**

RE: **ADDENDUM NO. 1**

To All Bidders:

Attached are modifications, clarifications and/or corrections for the Project Manual and are hereby made a part of the contract documents. Please attach this addendum to the Project Manual(s) in your possession. Please note the receipt of this addendum on the bid form. Bidders shall review changes to all portions of this work as changes to one portion may affect the work of another.

If you plan to hand deliver your IFB submission on the due date, please note you must check in on the 3rd floor prior to coming to the 6th floor. Please allow time for this as late submission will not be accepted.

Refer all questions relative to the business aspect, Instructions to Bidders, Special Conditions, and questions concerning the technical aspect of the documents to the Purchasing Process Manager by email at tamara.pugh@rps205.com.



ADDENDUM

TO: PROSPECTIVE BIDDERS

RE: ADDENDUM # 1

PROJECT NUMBER: BFA # 984A / 984B SD205 # 1705 / 1706
FOR: Dust Collection System
East High School
ADDRESS: 2929 Charles Street, Rockford, IL
Jefferson High School
4145 Samuelson Road, Rockford, IL

DATE: 08-23-2016

Please attach Addendum 1 to the Project Manual and Drawings for the referenced project, and kindly take same into consideration in preparing your proposal.

By _____
Rob C. Belles,
Belles Firm of Architecture Inc.

This addendum consists of (3) text pages including this sheet, and (1) Drawing Sheet ME1.

PRE-BID CONFERENCE NOTES

- 1) Mandatory Pre-Bid Conference was held at the Schools on August 23, 2016, 3:30pm
- 2) Conference Attendance Record, (1) page.
- 3) Introductions were made.
- 4) The Pre-Bid Conference Opening Statement, provided by the District, was read in it's entirety. Each attendee was also provided a printed copy. Emphasis was provided that ALL required forms MUST be turned in with the bids, and ALL correspondence, questions, and RFI's are to be sent, in writing, to Tamara Pugh at tamara.pugh@rps205.com.
- 5) Access to work area was provided. Contractor's were allowed to tour the work areas. Including the exterior.
- 6) See below for questions and clarifications/responses.

PRE-BID QUESTIONS AND ANSWERS

1) QUESTION: Is work to be done during school hours? After hours - and if so what are they? On Holidays?

ANSWER: The schedule is to remain as per the bid documents:

September 13, 2016, RPS Board Meeting.

September 14, 2016, Award / Notice to Proceed

January 9, 2017 Substantial Completion

- Exterior work can be done during the day
- Interior work can be done before or after class hours with clean up of construction materials and tools would need to be done daily
 - Class hours: 7:30 am to 3:45 pm (verify with school)
- Option to work on the "no school" dates listed below (eg. field verify, field measure, installation, etc.) No school on these dates:

Monday, September 26, 2016

Monday, October 10, 2016

Friday, November 11, 2016

Wednesday to Friday, November 23 to 25, 2016 (Fall Break)

Thursday, December 22, 2016 to Friday, January 6, 2017 (Winter Break)

2) QUESTION: Clarify the location of the explosion valve. Dirty or clean side.

ANSWER: The plan drawing is correct. Ductwork Elevation 1, Sheet ME1 incorrectly indicates the location of the explosion valve. Revised Sheet ME1.

ADDITIONS CHANGES & CLARIFICATIONS TO THE DRAWINGS & SPECIFICATIONS

Changes to sheet ME1

Omit the drop to the planer. Omit the modifications to the planer to accommodate collection. Provide 4" bleed to accommodate future connection. Correct Elevation 1.



PRE-BID MEETING SIGN-IN SHEET

IFB # 17-08 East & Jefferson High School Dust Collections

Monday, August 22, 2016 3:30 pm (CDST)

Printed Name	Company Name	Company Address	Telephone	E-mail
1 Jennifer Deuk-Fritz	EPS 205	1907 KISHWAUKEE ST.	815-209-8398	jennifer.deuk-fritz@eps205.com
2 DEAN HAVNEN	HASTINGS AIR ENERGY	5555 S. WEST RIDGE DR NEW BERLIN, WI 53151	800-236-8450	dean.havnen@hastingsair.com
3 GARY LARSON	LCBI	5612 INDUSTRIAL PARK 1035 LINCOLN ROAD SUITE 101B BETHLEHEM, PA 52722	815-633-1773	Carrye.LBuddler@lmelvin@aiguipsales.com
4 BRAND MELVIN	AES	2279 Yellow Creek Freeport IL 61032	815-235-1885	jhopkins@mechanic.com
5 JEN HOPKINS	mechanical inc	10540 Bl. 2nd St	815-647-6161	cmayunga@rockfordstructure.com
6 CHRIS HOPKINS	Rockford Structures	2500 Alphonse-Gariepy Montreal, QC, Canada H8T 3M2	414-551-3131	RKing@diversitech.ca
7 RICHARD KING	Diversitech	1115 GLOUCESTER ST	847-731-9389	
8 GENE FRANKEL				
9 ROB FRANKEL	FRANKEL ARCHITECTURE	2905 CREEK SIDE CT B1114	815-981-0504	tellesfirm@yahoo.com

OWNER'S EQUIPMENT

- A SANDER
B SANDER
C SANDER

D JOINTER
THIS HAS A SHEET METAL HOOD WITH A 5-1/2" DIAMETER (IN AND OUT ARE NEARLY THE SAME) CONNECTION.

E JOINTER
THIS HAS A SHEET METAL HOOD WITH A 5-1/2" DIAMETER (IN AND OUT ARE NEARLY THE SAME) CONNECTION.

F PLANNER
NOT CONNECTED

G PORTABLE TABLE SAW
PROVIDE DUCT DROP FOR CONNECTION OF PORTABLE SAW'S EXISTING FLEXIBLE CONNECTION WHEN SAW IS USED IN THE SHOP.

H PLYWOOD SAW
THERE IS A 3-1/4" SQUARE HOLE ON THE BACK FACE OF THIS SAW. THE HOLE IS AT THE TERMINATION OF A CHUTE THAT IS FORMED WHEN A SHEET OF PLYWOOD IS LAID IN THE CUTTING SURFACE. CONTRACTOR TO FABRICATE A BOX TO CONNECT A SOLID DUCT DROP TO THE BASE OF THE SAW AND REMOVE DUST THAT FALLS TO THE BOTTOM OF THE CHUTE.

J BAND SAW

K BAND SAW

L TABLE SAW

M CHOP SAW
CONTRACTOR TO PROVIDE A DUST COLLECTION SYSTEM THAT WILL REMOVE 90% OF THE DUST GENERATED BY THIS EQUIPMENT. THIS MAY BE (2) 4" RADIAL ARM SAW HOODS ON EACH SIDE OF SAW OR A SINGLE HOOD BEHIND THE SAW. HOOD SHALL NOT INTERFERE WITH THE FULL RANGE OF OPERATION OF THE SAW.

N CHOP SAW
CONTRACTOR TO PROVIDE A DUST COLLECTION SYSTEM THAT WILL REMOVE 90% OF THE DUST GENERATED BY THIS EQUIPMENT. THIS MAY BE (2) 4" RADIAL ARM SAW HOODS ON EACH SIDE OF SAW OR A SINGLE HOOD BEHIND THE SAW. HOOD SHALL NOT INTERFERE WITH THE FULL RANGE OF OPERATION OF THE SAW.

MEASUREMENTS OF CONNECTIONS PROVIDED ARE FOR PRICING ONLY. CONTRACTOR TO FIELD VERIFY ALL 1" X 1" INDICATES THE INTERIOR DIAMETER OF THE EXISTING CONNECTION. 0" X 1" INDICATES THE OUTSIDE DIAMETER OF THE EXISTING CONNECTION.

COLLECTION EQUIPMENT

A 5,000 CFM SELF-CONTAINED DUST COLLECTOR WITH MIN. (2) 55 GALLON DRUM COLLECTION. EQUAL TO VAS MODEL SDG 100 WITH VAS MODEL S1500 FAN.

B FAN OUTLET SILENCER CAPABLE OF LIMITING NOISE OUTPUT TO 80DBA, or less.

C NO RETURN VALVE EXPLOSION ISOLATION VALVE AND CONTROL PANEL FOR SYSTEM SHUT DOWN, DUST LEVEL, AND POWER INTEGRATION.

D SUPPLY GRILLE ON END OF DUCT. INDUSTRIAL ROUND DIFFUSER, STEEL, EQUAL TO CARNES MODEL 55DB.

MECHANICAL PLAN NOTES

M1 PROVIDE 5" BLEED-IN DUCT TO ACCOMMODATE EXTRA/FUTURE CAPACITY OF THE 5,000CFM SYSTEM SPECIFIED.

M2 PROVIDE 4" BLEED-IN DUCT TO ACCOMMODATE EXTRA/FUTURE CAPACITY OF THE 5,000CFM SYSTEM SPECIFIED.

DUCTWORK ALTERNATIVES

BASE BID: PROVIDE STANDARD, SINGLE WALL, 6-90, GALVANIZED, SPIRAL DUCT FOR DUST COLLECTION.

Up to 84 dia. 24 GA
84 to 144 dia. 22 GA
154 to 244 dia. 18 GA

ELBOWS AND BRANCHES TO BE TWO (2) GAUGES HEAVIER THAN STRAIGHT PIPE OF EQUAL DIAMETER.

ADJUSTABLE ELBOWS AND 90 DEGREE TEES ARE NOT TO BE PROVIDED.

ELBOWS TO BE MINIMUM OF 15 CENTERLINE RADIUS.

BRANCH ENTRANCE LEGS TO BE 45 DEGREE.
90 DEGREE TEES ARE NOT TO BE PROVIDED!

STANDARD SLIP FIT CONNECTIONS WITH COUPLINGS.

ALTERNATE BID: PROVIDE SINGLE WALL, 6-90, GALVANIZED, CLAMP TOGETHER, STANDARD GASKETED, DUCTWORK BY Nordfab, Duct Inc, OR EQUAL FOR DUST COLLECTION.

ELBOWS TO BE MINIMUM OF 15 CENTERLINE RADIUS.

BRANCH ENTRANCE LEGS TO BE 45 DEGREE.
90 DEGREE TEES ARE NOT TO BE PROVIDED!

FULLY WELDED, LEAK-TIGHT SEAMS.

SYMBOL KEY

- 6" EXHAUST DUCT SHOWN ACTUAL SIZE
— 6" EXHAUST DUCT SHOWN AS SINGLE LINE
— 6" DUCT DROP
— 6" CLEAN AIR RETURN SHOWN ACTUAL SIZE
— 6" AIR RETURN GRILLE/REGISTER
— WIRE RUN TO PANEL
120V CONVENIENCE RECEPTACLE PROVIDE WEATHERPROOF AND 6FCI AS REQ'D AT EXTERIOR
DISCONNECT

DISCONNECT SWITCHES

ALL ELECTRICAL DISCONNECT SWITCHES SHALL BE FURNISHED & INSTALLED BY THE ELECTRICAL CONTRACTOR. EACH DISCONNECTING MEANS SHALL BE LEGIBLY MARKED TO INDICATE ITS PURPOSE UNLESS LOCATED AND ARRANGED SO THE PURPOSE IS EVIDENT. MARKING SHALL BE SUFFICIENT TO WITHSTAND THE ENVIRONMENT INVOLVED.

PANEL PP-N

3-PHASE
250 AMP MAIN BREAKER

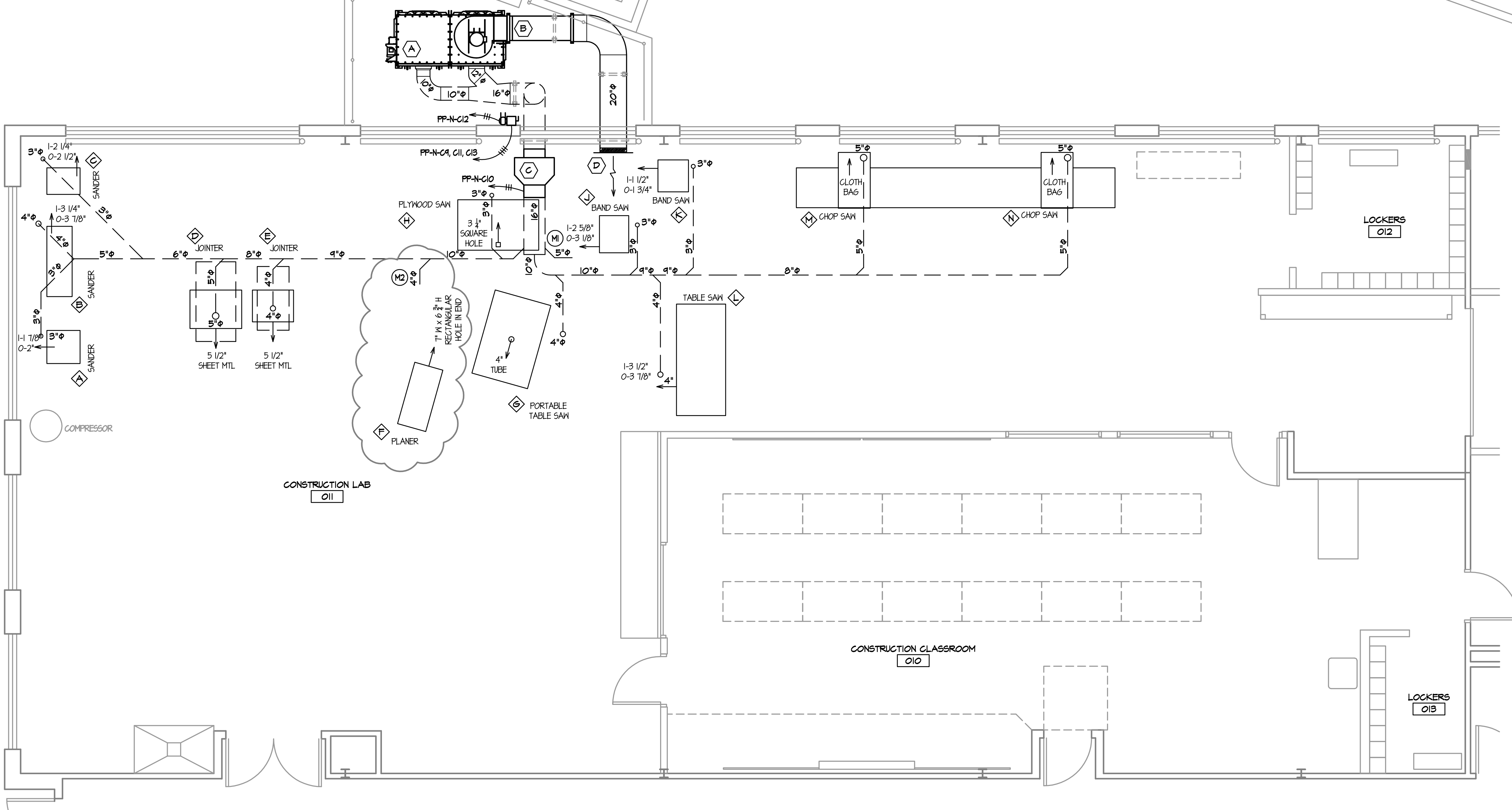
CIRCUIT	CIRCUIT USAGE	BREAKER AMPS	BREAKER AMPS	CIRCUIT USAGE	CIRCUIT
1	SPARE	20	30	P	2
3	WASHER	20	VIF	P	4
5	POWER	20	20	P	6
7	SMART BD	20	20	M	8
9			20	P	10
11	COLLECTOR	50	20	P	12
13			20	P	14
15	EMPTY				16
17					18
19					20
21					22
23					24
25					26
27					28
29					30
31					32
33					34
35					36
37					38
39					40

P = POWER RECEPTACLE
L = LIGHTS
M = MOTOR
E = EQUIPMENT

MECHANICAL PLAN NOTES

M1 PROVIDE 5" BLEED-IN DUCT TO ACCOMMODATE EXTRA/FUTURE CAPACITY OF THE 5,000CFM SYSTEM SPECIFIED.

M2 PROVIDE 4" BLEED-IN DUCT TO ACCOMMODATE EXTRA/FUTURE CAPACITY OF THE 5,000CFM SYSTEM SPECIFIED.

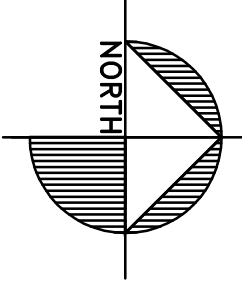


1 DUCTWORK LAYOUT ELEVATION

SCALE: 1/4" = 1'-0"

1 MECHANICAL PLAN

SCALE: 1/2" = 1'-0"



CONSTRUCTION LAB DUST COLLECTION SYSTEM



ROCKFORD EAST HIGH SCHOOL
2828 CHARLES STREET
ROCKFORD, ILLINOIS

DRAWN

BFA

DATE

07-01-2016

PROJECT No.

984A
SD205 #1705

SHEET No.

ME1

080 FILE ME1

ADDENDUM I
08-28-2016
REV.

BELLES FIRM OF
a r c h i t e c t u r e
2905 Creekside Court, Suite 101, Rockford, IL 61114
(815)-961-0504 BellesFirm@yahoo.com
License No. 184-001868