



**ROCKFORD BOARD OF EDUCATION  
INVITATION FOR BID ON SUPPLIES, MATERIALS, EQUIPMENT OR SERVICES  
FOR SCHOOL DISTRICT NO. 205  
ROCKFORD, ILLINOIS**

IFB No. 19-07 Window Replacement Project at Froberg & Hillman Elementary Schools

DATE: October 19, 2018

RE: **ADDENDUM NO. 1**

---

To All Bidders:

Included are modifications, clarifications and/or corrections for the Project Manual and are hereby made a part of the contract documents. Please attach this addendum to the Project Manual(s) in your possession. Please note the receipt of this addendum on the bid form. Bidders shall review changes to all portions of this work as changes to one portion may affect the work of another.

**If you plan to hand deliver your IFB submission on the due date, please note you must check in on the 2nd floor prior to coming to the bid opening. Please allow time for this as late submission will not be accepted.**

Refer all questions relative to the business aspect, Instructions to Bidders, Special Conditions, and questions concerning the technical aspect of the documents to the Director of Purchasing by email at [purchasingdeptstaff@rps205.com](mailto:purchasingdeptstaff@rps205.com).

ROCKFORD BOARD OF EDUCATION

By: Dane Youngblood  
Director of Purchasing



## **ADDENDUM ONE**

Project No.: **19-07**

Date: **October 19, 2018**

Subject: **CHANGES to the BIDDING DOCUMENTS**

Project: **WINDOW REPLACEMENT PROJECT AT  
FROBERG ELEMENTARY SCHOOL AND  
HILLMAN ELEMENTARY SCHOOL FOR  
ROCKFORD PUBLIC SCHOOLS  
ROCKFORD, ILLINOIS**

Bids Due: **2:00PM, TUESDAY, OCTOBER 30, 2018**

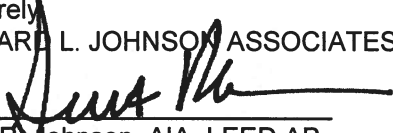
From: **RICHARD L. JOHNSON ASSOCIATES, INC.  
4703 CHARLES STREET  
ROCKFORD, IL 61108**

To: **ALL PROJECT DOCUMENT HOLDERS**

Please reproduce this Addendum as needed, and attach to the Project Manuals for the above project.

Bidders shall indicate receipt of this and all Addenda in the space provided on the Bid Form. Failure to do so may be sufficient cause to reject the bid.

Sincerely,  
RICHARD L. JOHNSON ASSOCIATES, INC.



\_\_\_\_\_  
Scott R. Johnson, AIA, LEED AP

This Addendum consists of:  
Pages 1 thru 3.  
8.5x11 Drawings ADA1.1 thru ADA1.10.  
Pre-Bid Conference Opening Statement - 1 page  
Pre-Bid Meeting Minutes - 3 pages  
Pre-Bid Attendance Record - 1 page

**NOTE:** Wherein this Addendum conflicts with the original Project Manual and Drawings, this Addendum shall govern.

## **CHANGES to the PROJECT MANUAL**

### **1. GENERAL ITEMS**

- 1.1. See attached Pre-Bid Conference Opening Statement.
- 1.2. See attached Pre-Bid Meeting Minutes.
- 1.3. Contact Anita Schauer at 815-988-1015 if you need to make a site visit to the schools.
- 1.4. At Froberg Elementary School – Change window operator type from rotary handle to center positioned heavy duty cam lock style. Provide wicket in screen for hand operation.

## **CHANGES to the DRAWINGS**

### **2. FROBERG AND HILLMAN ELEMENTARY SCHOOLS – SHEET A101**

- 2.1. The mock-up testing date shall change from February 18th to February 22nd, after 3:00pm.

### **3. FROBERG ELEMENTARY SCHOOL – SHEET A101**

- 3.1. Keynote 6 – Omit wording for keynote and replace with “Window Contractor to remove window shades, salvage and re-install after new windows have been installed. Window Contractor to remove them prior to the Asbestos Contractor starts demolition of the windows.”

### **4. HILLMAN ELEMENTARY SCHOOL – SHEET A101**

- 4.1. Keynote 4 – Omit wording for keynote and replace with “Window Contractor to remove window shades, salvage and re-install after new windows have been installed. Window Contractor to remove them prior to the Asbestos Contractor starts demolition of the windows.”

### **5. HILLMAN ELEMENTARY SCHOOL - SHEET A103**

- 5.1. Change window type in Stair at first floor from W6 to W12. Change window type in Stair at second floor from W7 to W13. See Addendum Drawings ADA1.1 and ADA1.2.

### **6. HILLMAN ELEMENTARY SCHOOL - SHEET A105**

- 6.1. New Window types W12 and W13 have no operables. See Addendum Drawing ADA1.2.

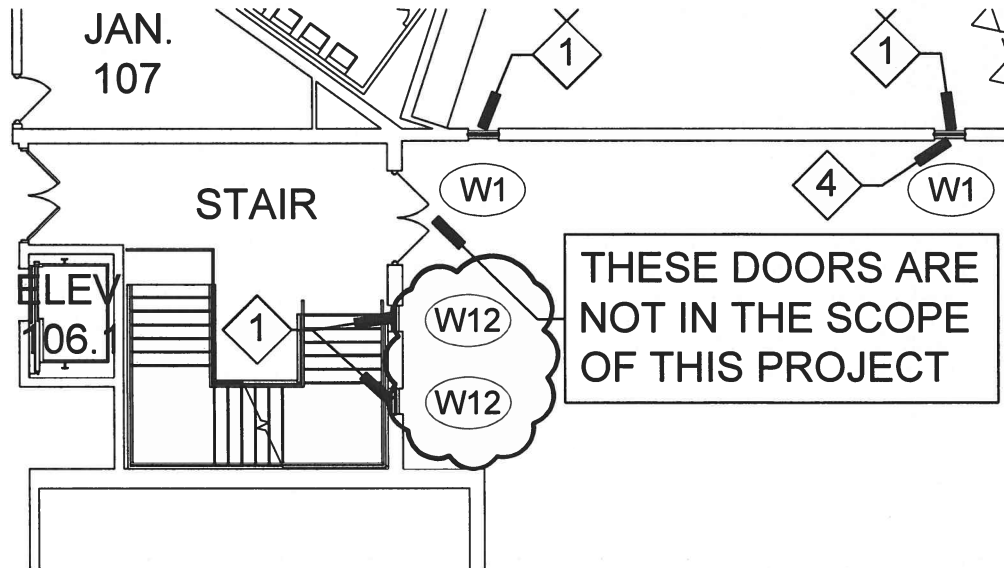
**7. HILLMAN ELEMENTARY SCHOOL - SHEET A105**

- 7.1.** Change window type W2 operable type from casement to projected top hinge type. Change operable size. See Addendum Drawing ADA1.3.

**8. HILLMAN ELEMENTARY SCHOOL - SHEET A106**

- 8.1.** At window type W1 – the entire window system shall be the Kawneer 8225TL system with head and jamb receptors. See revised detail J1 and H1. See Addendum Drawing ADA1.4 and ADA1.5.
- 8.2.** At window types W3, W6 and W7 – the entire window system shall be the Kawneer 8225TL system with head and jamb receptors. See new detail J15 (old J2) and H8(old H2). See Addendum Drawings ADA1.6, ADA1.7 and ADA1.8.
- 8.3.** At window type W5 – the entire window system shall be the Kawneer 8225TL system with head and jamb receptors. See revised detail H5 and revised detail J4. See Addendum Drawings ADA1.9 and ADA1.10.

**END ADDENDUM NUMBER 1**

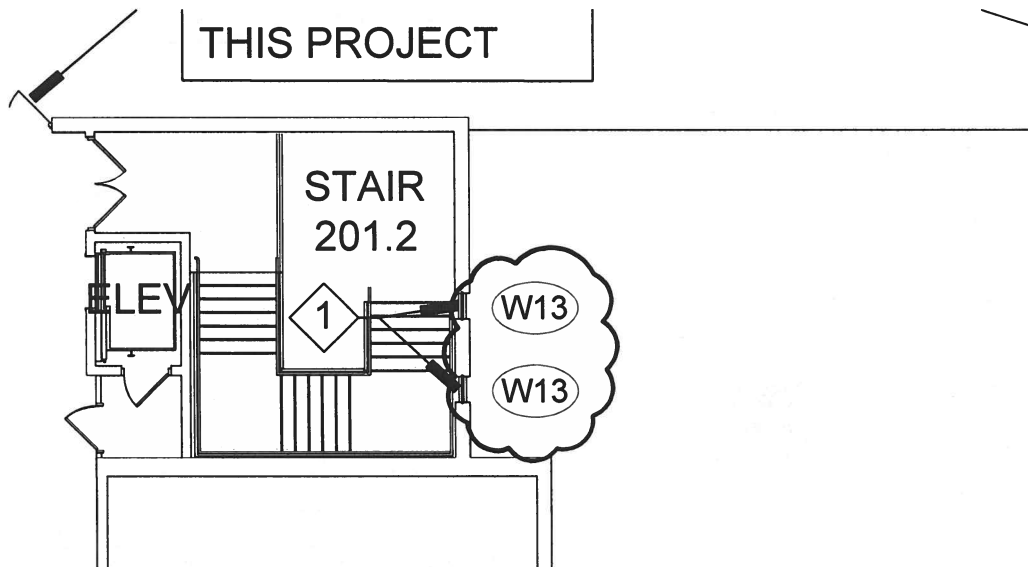


1

## FIRST FLOOR REVISED PLAN

SCALE: 1"=20'-0"

( REFERENCE SHEET A103 )



2

## SECOND FLOOR REVISED PLAN

SCALE: 1"=20'-0"

( REFERENCE SHEET A103 )



**NOTE:**  
ORIGINAL DRAWINGS SHALL  
REMAIN IN FORCE EXCEPT  
FOR CHANGES HERE-IN NOTED

WINDOW REPLACEMENT PROJECT AT  
FROBERG ELEMENTARY SCHOOL AND  
HILLMAN ELEMENTARY SCHOOL FOR  
ROCKFORD PUBLIC SCHOOLS

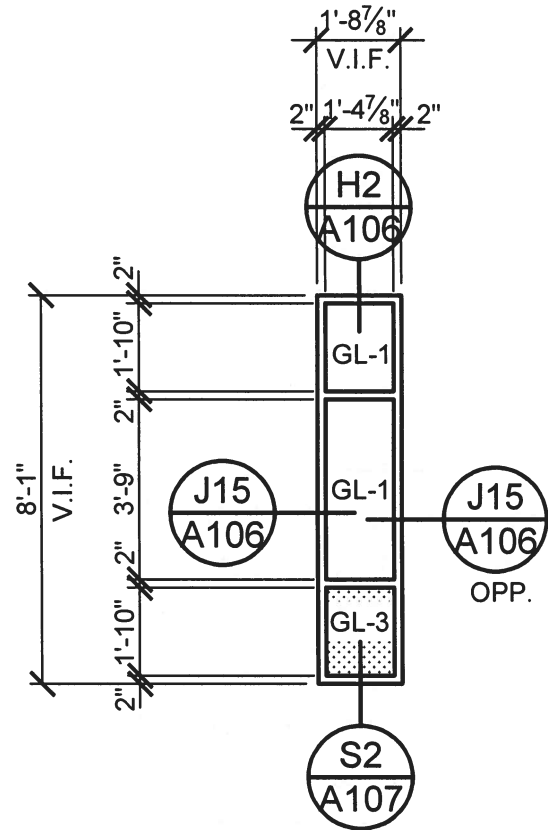
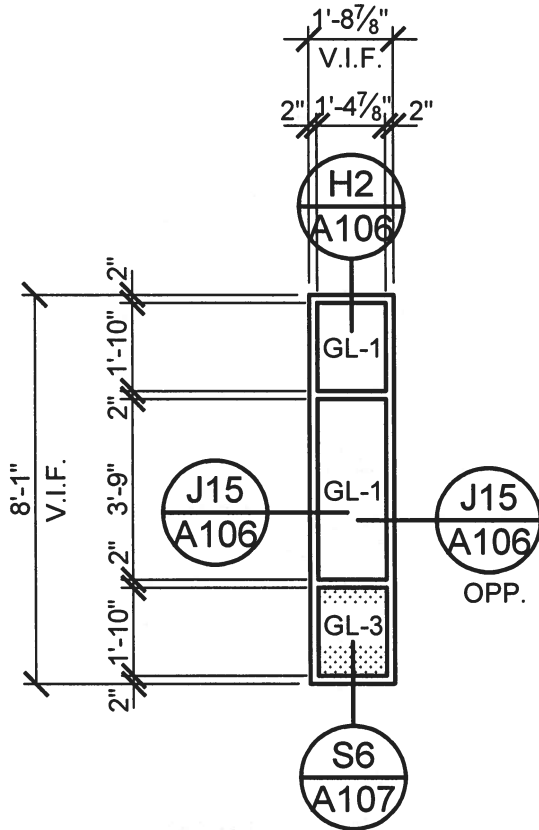
**RICHARD L. JOHNSON**  
ASSOCIATES | ARCHITECTS

JOB NO. 19-07

ADDENDUM DWG.

DATE: October 19, 2018

**ADA1.1**



## FRAME TYPES

SCALE: 1/4"=1'-0"

( REFERENCE SHEET A105 )

**NOTE:**  
ORIGINAL DRAWINGS SHALL  
REMAIN IN FORCE EXCEPT  
FOR CHANGES HERE-IN NOTED

WINDOW REPLACEMENT PROJECT AT  
FROBERG ELEMENTARY SCHOOL AND  
HILLMAN ELEMENTARY SCHOOL FOR  
ROCKFORD PUBLIC SCHOOLS

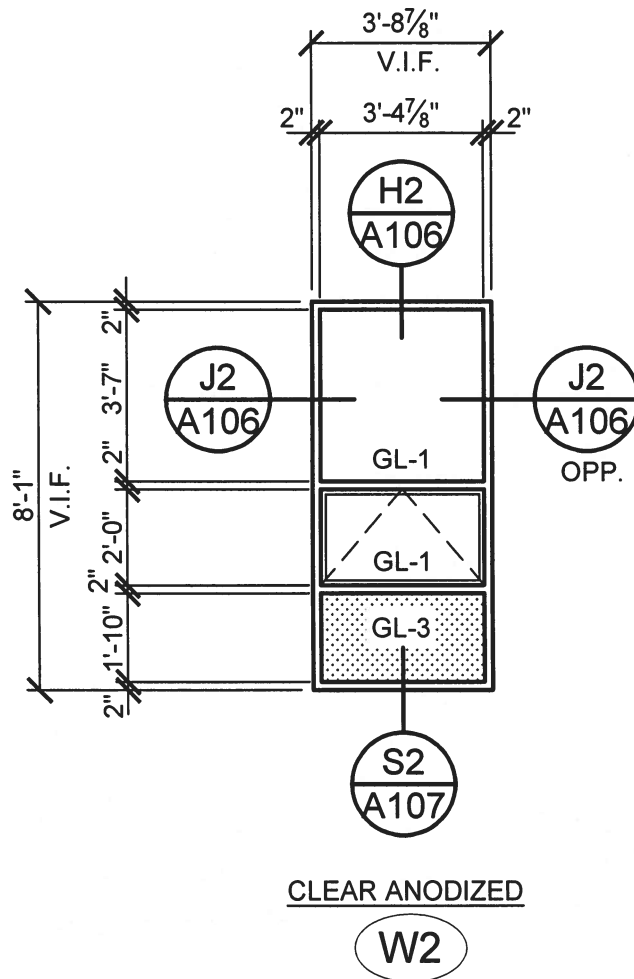
**RICHARD L. JOHNSON**  
ASSOCIATES | ARCHITECTS

JOB NO. 19-07

ADDENDUM DWG.

DATE: October 19, 2018

**ADA1.2**



## FRAME TYPES

SCALE:  $1/4"=1'-0"$

( REFERENCE SHEET A105 )

**NOTE:**  
ORIGINAL DRAWINGS SHALL  
REMAIN IN FORCE EXCEPT  
FOR CHANGES HERE-IN NOTED

WINDOW REPLACEMENT PROJECT AT  
FROBERG ELEMENTARY SCHOOL AND  
HILLMAN ELEMENTARY SCHOOL FOR  
ROCKFORD PUBLIC SCHOOLS

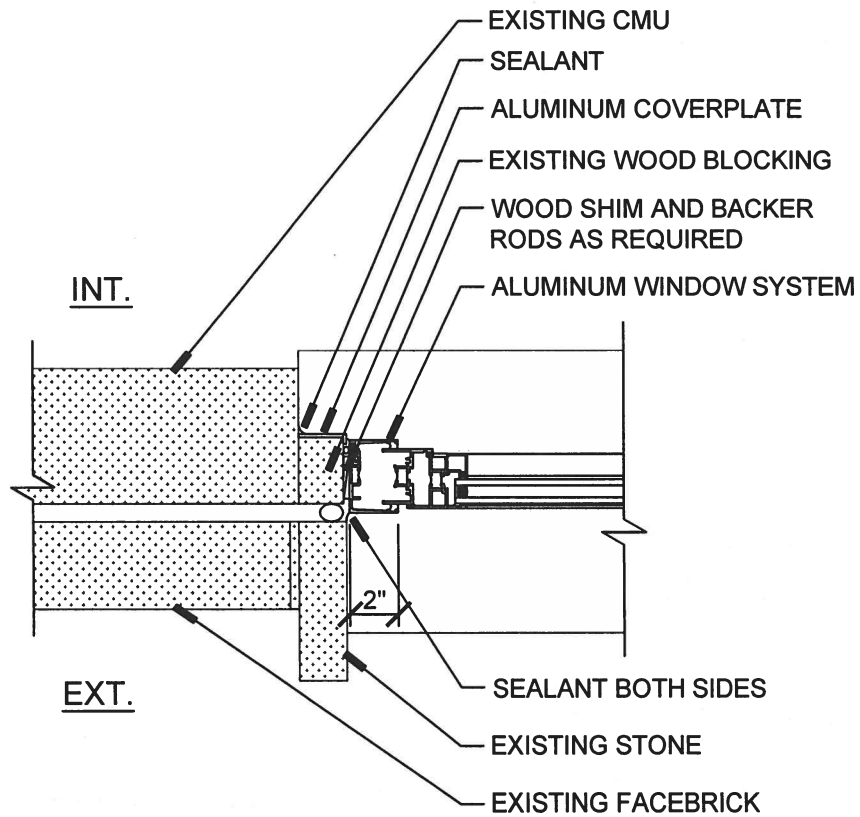
**RICHARD L. JOHNSON**  
ASSOCIATES | ARCHITECTS

JOB NO. 19-07

ADDENDUM DWG.

DATE: October 19, 2018

**ADA1.3**



## JAMB DETAIL

SCALE: 1-1/2"=1'-0"

( REFERENCE SHEET A106 )

**NOTE:**  
ORIGINAL DRAWINGS SHALL  
REMAIN IN FORCE EXCEPT  
FOR CHANGES HERE-IN NOTED

WINDOW REPLACEMENT PROJECT AT  
FROBERG ELEMENTARY SCHOOL AND  
HILLMAN ELEMENTARY SCHOOL FOR  
ROCKFORD PUBLIC SCHOOLS

**RICHARD L. JOHNSON**  
ASSOCIATES | ARCHITECTS

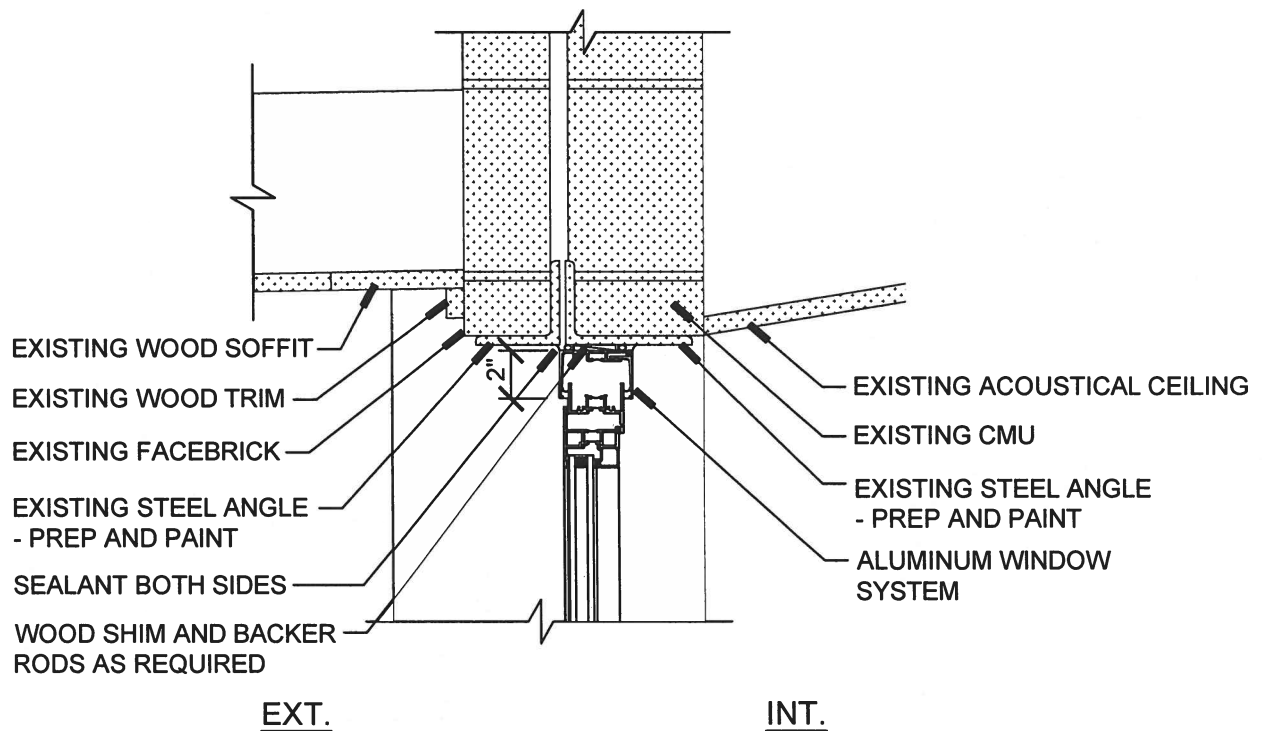
JOB NO. 19-07

ADDENDUM DWG.

DATE: October 19, 2018

**ADA1.4**





# H1 HEAD DETAIL

SCALE: 1-1/2"=1'-0"

( REFERENCE SHEET A106 )

**NOTE:**  
ORIGINAL DRAWINGS SHALL  
REMAIN IN FORCE EXCEPT  
FOR CHANGES HERE-IN NOTED

WINDOW REPLACEMENT PROJECT AT  
FROBERG ELEMENTARY SCHOOL AND  
HILLMAN ELEMENTARY SCHOOL FOR  
ROCKFORD PUBLIC SCHOOLS

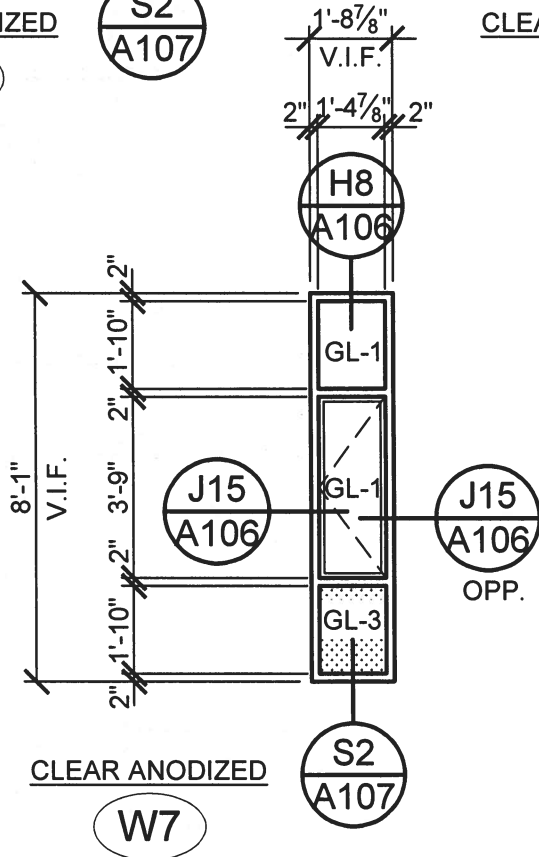
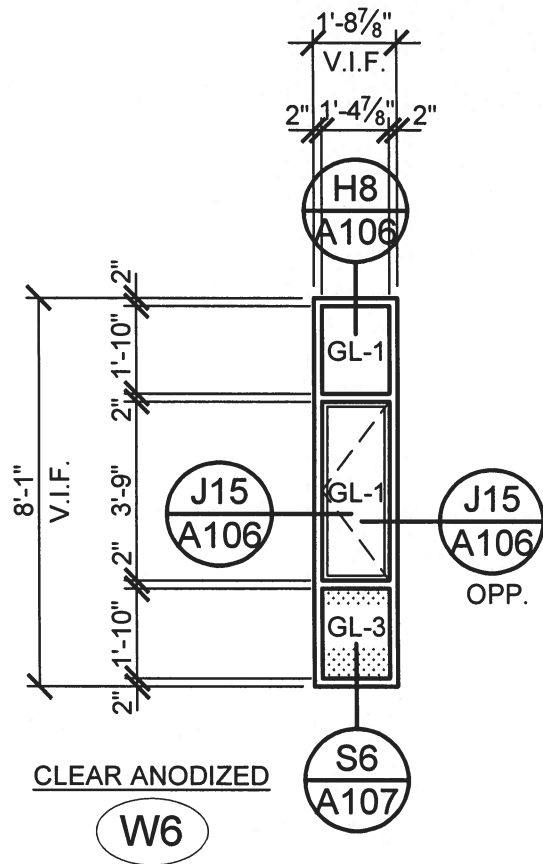
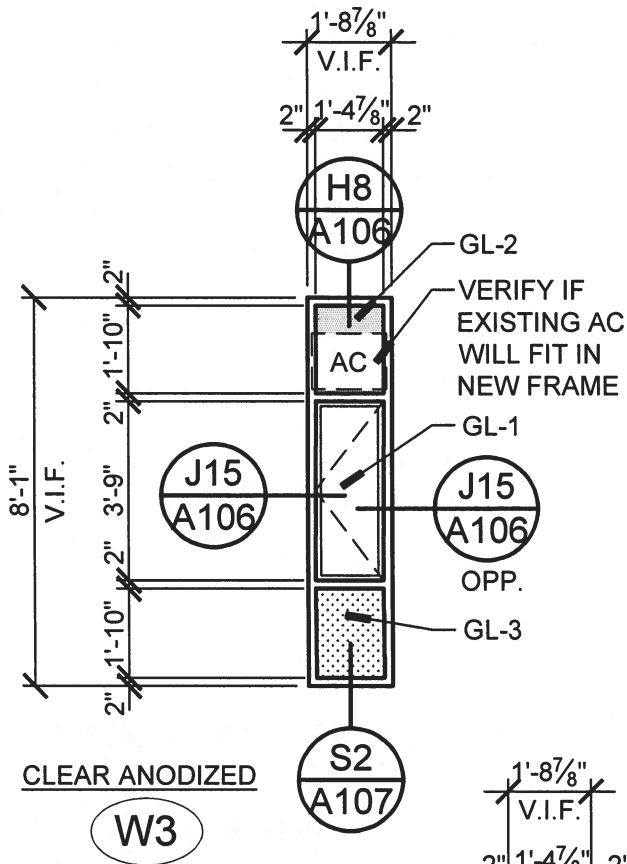
**RICHARD L. JOHNSON**  
ASSOCIATES | ARCHITECTS

JOB NO. 19-07

ADDENDUM DWG.

DATE: October 19, 2018

**ADA1.5**



## FRAME TYPES

SCALE: 1/4"=1'-0"

( REFERENCE SHEET A105 )

**NOTE:**  
ORIGINAL DRAWINGS SHALL  
REMAIN IN FORCE EXCEPT  
FOR CHANGES HERE-IN NOTED

WINDOW REPLACEMENT PROJECT AT  
FROBERG ELEMENTARY SCHOOL AND  
HILLMAN ELEMENTARY SCHOOL FOR  
ROCKFORD PUBLIC SCHOOLS

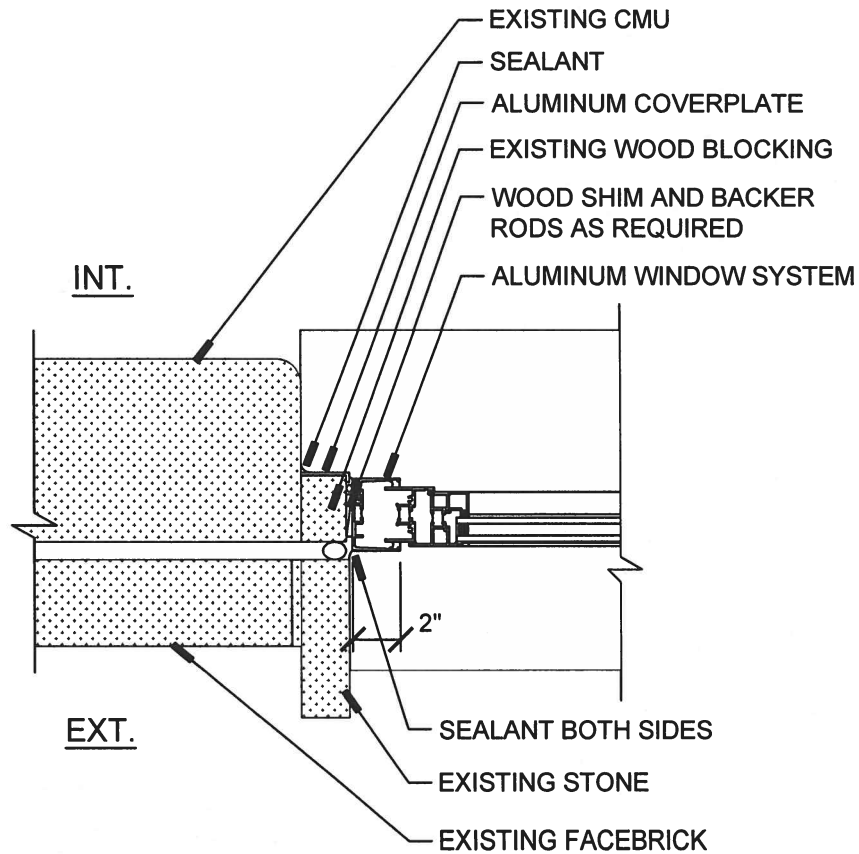
**RICHARD L. JOHNSON**  
ASSOCIATES | ARCHITECTS

JOB NO. 19-07

ADDENDUM DWG.

DATE: October 19, 2018

**ADA1.6**



**J15** **JAMB DETAIL**  
SCALE: 1-1/2"=1'-0"

**( REFERENCE SHEET A106 )**

**NOTE:**  
ORIGINAL DRAWINGS SHALL  
REMAIN IN FORCE EXCEPT  
FOR CHANGES HERE-IN NOTED

WINDOW REPLACEMENT PROJECT AT  
FROBERG ELEMENTARY SCHOOL AND  
HILLMAN ELEMENTARY SCHOOL FOR  
ROCKFORD PUBLIC SCHOOLS

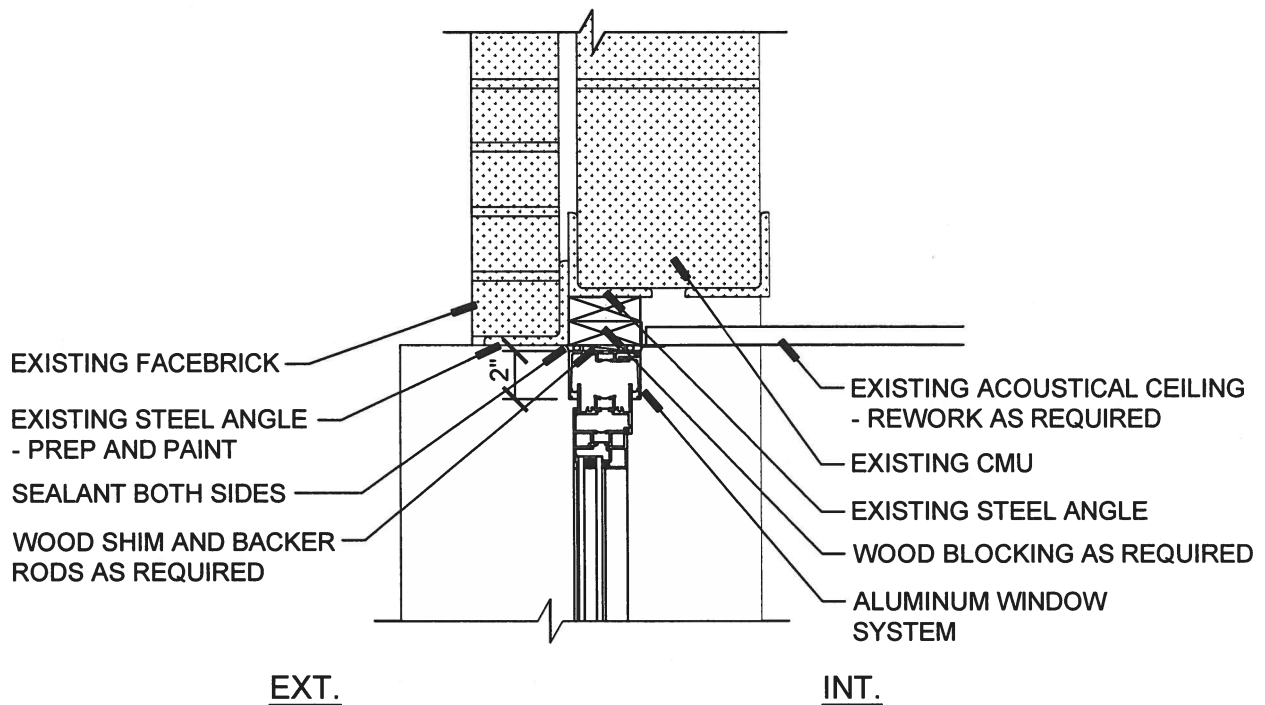
**RICHARD L. JOHNSON**  
ASSOCIATES | ARCHITECTS

JOB NO. 19-07

ADDENDUM DWG.

DATE: October 19, 2018

**ADA1.7**



# **H8** HEAD DETAIL

SCALE: 1-1/2"=1'-0"

( REFERENCE SHEET A106 )

**NOTE:**  
ORIGINAL DRAWINGS SHALL  
REMAIN IN FORCE EXCEPT  
FOR CHANGES HERE-IN NOTED

WINDOW REPLACEMENT PROJECT AT  
FROBERG ELEMENTARY SCHOOL AND  
HILLMAN ELEMENTARY SCHOOL FOR  
ROCKFORD PUBLIC SCHOOLS

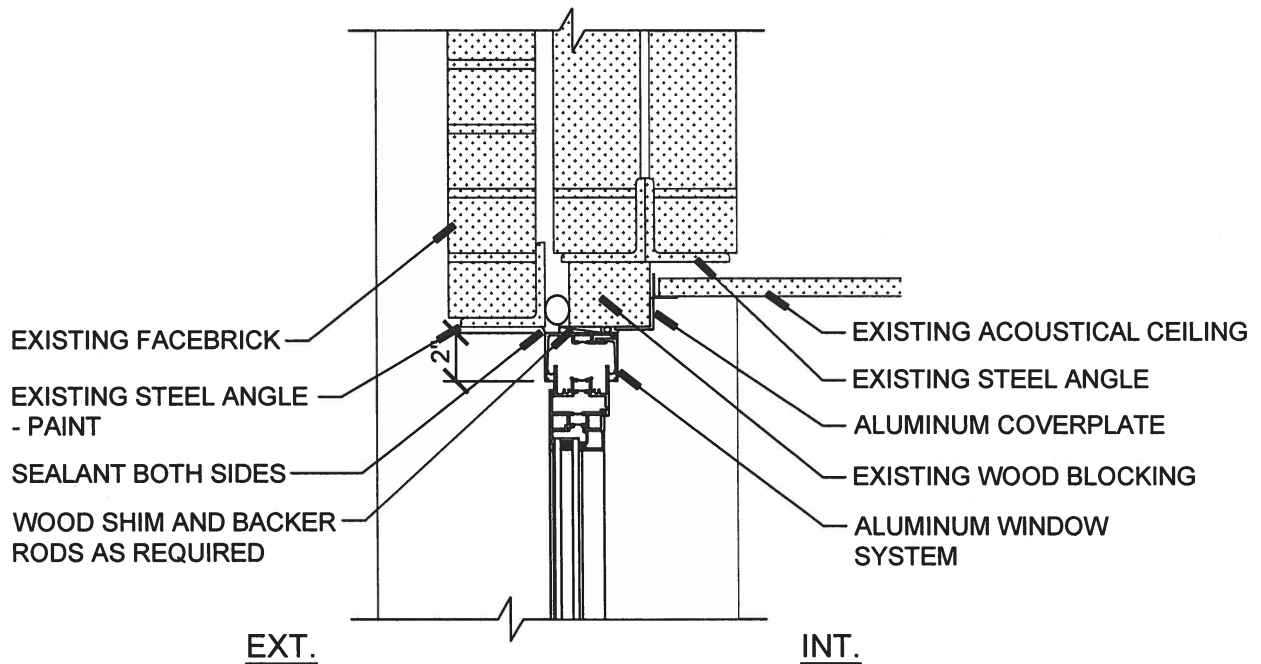
**RICHARD L. JOHNSON**  
ASSOCIATES | ARCHITECTS

JOB NO. 19-07

ADDENDUM DWG.

DATE: October 19, 2018

**ADA1.8**



## H5 HEAD DETAIL

SCALE: 1-1/2"=1'-0"

( REFERENCE SHEET A106 )

**NOTE:**  
ORIGINAL DRAWINGS SHALL  
REMAIN IN FORCE EXCEPT  
FOR CHANGES HERE-IN NOTED

WINDOW REPLACEMENT PROJECT AT  
FROBERG ELEMENTARY SCHOOL AND  
HILLMAN ELEMENTARY SCHOOL FOR  
ROCKFORD PUBLIC SCHOOLS

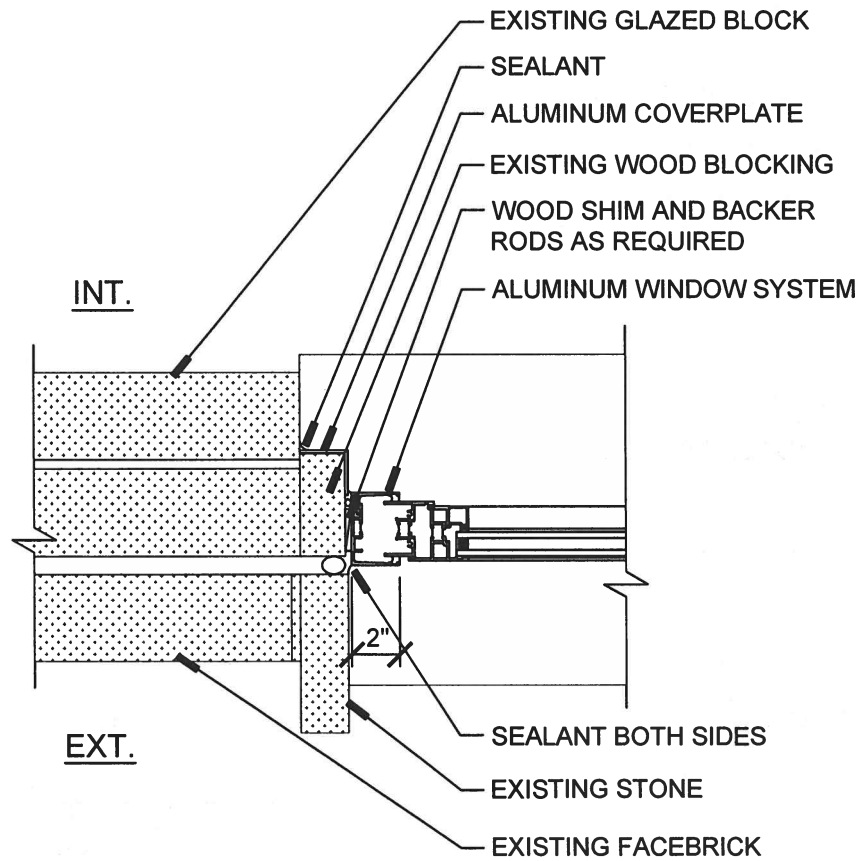
**RICHARD L. JOHNSON**  
ASSOCIATES | ARCHITECTS

JOB NO. 19-07

ADDENDUM DWG.

DATE: October 19, 2018

**ADA1.9**



## **J4** JAMB DETAIL

SCALE: 1-1/2"=1'-0"

**( REFERENCE SHEET A106 )**

**NOTE:**  
ORIGINAL DRAWINGS SHALL  
REMAIN IN FORCE EXCEPT  
FOR CHANGES HERE-IN NOTED

WINDOW REPLACEMENT PROJECT AT  
FROBERG ELEMENTARY SCHOOL AND  
HILLMAN ELEMENTARY SCHOOL FOR  
ROCKFORD PUBLIC SCHOOLS

**RICHARD L. JOHNSON**  
ASSOCIATES | ARCHITECTS

JOB NO. 19-07

ADDENDUM DWG.

DATE: October 19, 2018

**ADA1.10**

## PRE-BID CONFERENCE OPENING STATEMENT

Welcome to the mandatory pre-bid conference for IFB 19-07 Window Replacement Project at Froberg and Hillman Elementary Schools for the Rockford Public Schools.

The purpose of this meeting is to receive input, comments, questions, clarifications and suggested changes relative to this solicitation. As a reminder, the only acceptable changes to the Bid/RFP are formal Addendums published by the RPS Purchasing department. Additionally, the Addendum may address other issues identified by the School District.

The goal of today's meeting is to increase your knowledge of the solicitation as it is written and provide an information mechanism in which you may advise the School District of any changes it should make. Consequently, any changes you wish the Rockford Public Schools to consider must be submitted in writing to the Purchasing department before the deadline as expressed in the solicitation.

We will try to answer as many of the questions as possible. If we cannot answer a question today, we will defer that answer to the published Addendum. Additionally, minutes from this pre-bid conference will be published in the Addendum.

- Bid Opening is scheduled for October 30, 2018 at 2:00 pm Rockford Board of Education, 6th floor Conference Room. Late bids will not be accepted. Faxed or emailed bids will not be accepted.
- Board Approval November 13, 2018.
- Bid RFI Procedures - All written correspondence during the bid process **MUST** be sent to Dane Youngblood, Director of Purchasing, via email at [PurchasingDeptStaff@rps205.com](mailto:PurchasingDeptStaff@rps205.com). Last RFI will be accepted until October 23, 2018 at 12 pm. Last addendum will be issued by October 25, 2018 at 4:30 pm.
- Addendums will be emailed to all attendees at the pre-bid conference, posted on the RPS website and Demand Star.
- PLEASE reference the **REQUIRED FORMS CHECK LIST** for all documents that **must** be submitted with your bid offer form. All forms must be properly completed, signed and submitted or your bid will be deemed non-responsive.

**MANDATORY PRE BID MEETING NOTES**  
**Rockford Public School District #205**  
**Window Replacement Project at Froberg and Hillman Elementary Schools**

**PRE-BID DATE & TIME: Tuesday, October 16, 2018 @ 2:30 PM**

**A. General Items**

1. Meeting Sign-Up Sheet was passed around to attendees.
2. The Pre-Bid Conference Opening Statement was read out loud.
3. Bids Due - Tuesday, October 30, 2018 at 2:00pm.

**B. Items discussed during the meeting**

1. The materials used on the project are Tax Exempt.
2. Bid RFI Procedure – Email Only – All correspondence MUST be sent to Dane Youngblood, Director of Purchasing via email at [purchasingdeptstaff@rps205.com](mailto:purchasingdeptstaff@rps205.com).
3. 5% Bid Bond MUST Accompany the Bid.
4. 100% Performance & Payment Bond will be required for the project.
5. The building permit will be obtained by RPS thru the Regional Office of Education.
6. The project will be bid out to Contractors under Base Bid F for the work at Froberg, Base Bid H for the work at Hillman and a combined Base Bid FH for work at both Froberg and Hillman. Projects could be awarded to one Contractor for both or awarded to two Contractors.
7. Alternate Bid F1 is for replacing doors, frames and hardware for the Gymnasium at Froberg.  
Alternate Bid H1 is for replacing doors, frames and hardware for Classrooms 114 and 116 at Hillman.  
Alternate Bid H2 is for providing a metal panel wall system over existing stone panels at window types W10 and W11 at Hillman.
8. Anita is checking if the schools have summer school or activities in the school over summer 2019.
9. Asbestos contractor shall be hired by the District to remove existing windows and they will board up the windows. Window contractor shall remove board up windows and turn them over to the asbestos contractor.
10. The construction schedule shown on Drawing A101 was reviewed for both Froberg and Hillman.
11. Contractors can tap off the existing building's electrical and water services for construction purposes.



12. Contractors can use existing toilets.
13. Construction meetings will be held during construction. Contractor to take meeting notes and distribute.
14. Close out documents will be processed thru the Architect.
15. All workers are required to complete the criminal background check. The full background check is only necessary if employees are going to be on site more than 30 days. The online registry checks suffice for those on site fewer than 30 days.
16. If both projects are awarded to one Contractor, separate schedule of values need to be submitted for the two schools.
17. Contractor's shall have a Full time designated foreman on site at all times work is taking place. The foreman can be a working foreman.
18. Contractor shall coordinate all staging locations with the Owner.
19. The elevator can be used to move materials to different levels. Contractor to protect floor, walls and ceiling of the elevator cab.
20. One mock up will need to be installed at each school. Contractor will pay for the first test of the window. Contractor shall pay for any additional testing required if the original test fails. Owner may randomly test completed windows in the field. See drawing A101 for dates for the mock up testing.
21. Asbestos contractor to remove window ac units and the Window Contractor to re-install. Contractor to verify final locations of ac window units with the Owner.
22. All patching and painting required because of the window demolition work shall be completed by the Asbestos Removal contractor. All patching and painting due to the window installation work shall be by the Window Contractor.
23. Window shades are required in locations as designated on the design documents. Some existing shades will be re-installed by the Contractor.
24. Mark the number of addendum you receive on the bid form.
25. Mark the date the site visit was completed on the bid form.
26. All drawings were briefly reviewed with the scope of work.
27. Faxed or emailed bids will not be accepted.
28. Nothing stated at the Pre-Bid meeting or any verbal/email/fax communication from anyone will change the project documents, unless an Addendum is issued by Richard L. Johnson Associates.
29. Final window framing and glass cleaning on the exterior and interior shall be by the General

Contractor.

30. RPS will not publish budgets for the projects.
31. A walk thru of both schools was completed after the meeting.
32. Contact Anita Schauer at 815-988-1015 to schedule any future site visits.

**END OF MEETING NOTES**



PRE-BID MEETING SIGN-IN SHEET

IFB 19-07 Window Replacement Project at Froberg & Hillman Elementary Schools

PLEASE WRITE EMAIL ADDRESS SO THAT IT IS LEGIBLE IN ORDER TO RECEIVE ADDENDUM INFORMATION

	Printed Name	Company Name	Company Address	Telephone	E-mail
1	Scott Johnson	BWA, INC	4703 CHARLES ST, DEERFIELD 60015	815-398-1231	sjohnson@ELJARCHIT.COM
2	Ernest Larson	Larson & Larson Builders	5612 Industrial Ave Loves Park 61111	815-633-1773	erent@lbuilders.net
3	Anita Schauer	RPS205	1907 Kishwaukee St.	815-988-1015	Anita.Schauer@rps205.com
4	Terry Dineen	Rockford Structures	1054 112nd St. Maclester Park 815 623-6161	815 623-6161	tdineen@rockfordstructures.com
5	Dan Kennedy	Rock Valley Glass	1398 Huntwood Dr. Cherry Valley IL 61016	815 332-1868	dkennedy@rockvalleyglass.com
6	James Valleyakis	Rock Valley Glass	"	815 509-6278	jv@rockvalleyglass.com
7					