



**ROCKFORD BOARD OF EDUCATION
INVITATION FOR BID ON SUPPLIES, MATERIALS, EQUIPMENT OR SERVICES
FOR SCHOOL DISTRICT NO. 205
ROCKFORD, ILLINOIS**

IFB No. 19-13 Asbestos Abatement Project at Froberg and Hillman Schools

DATE: January 4, 2019

RE: **ADDENDUM NO. 1**

To All Bidders:

Included are modifications, clarifications and/or corrections for the Project Manual and are hereby made a part of the contract documents. Please attach this addendum to the Project Manual(s) in your possession. Please note the receipt of this addendum on the bid form. Bidders shall review changes to all portions of this work as changes to one portion may affect the work of another.

If you plan to hand deliver your IFB submission on the due date, please note you must check in on the 2nd floor prior to coming to the bid opening. Please allow time for this as late submission will not be accepted.

Refer all questions relative to the business aspect, Instructions to Bidders, Special Conditions, and questions concerning the technical aspect of the documents to the Director of Purchasing by email at purchasingdeptstaff@rps205.com.

ROCKFORD BOARD OF EDUCATION

By: Dane Youngblood
Director of Purchasing



DATE: January 3, 2019

TO:

Guy Carynski
Dane Youngblood
Casey Ramas
Tim Holian
Guido Gorniak
Tomasz Stogowski
Tim Boll
Kevin Montgomery
John Curtis
Evan Christian
Rod Harvey

guy.carynski@rps205.com
dane.youngblood@rps205.com
ramasc@rps205.com
tim@holianins.com
guido@abelplusservices.com
tomasz.husar1@gmail.com
tboll@colfaxcorp.net
kevinvalortechologies@gmail.com
john.curtis@brockgroup.com
echristian@ccaltd.com
rharvey@ccaltd.com

SUBJECT: ADDENDUM NO. 1 TO THE BIDDING DOCUMENTS

PROJECT MANUALS Rockford Public Schools District #205 – Hillman
Elementary School and White Swan Elementary School – Window
Replacement Asbestos Abatement dated December 7, 2018

This addendum forms a part to the bidding and contract documents and modifies the original bidding documents, dated December 7, 2018. **ALL CONTRACTORS SHALL ACKNOWLEDGE WRITTEN RECEIPT OF THIS ADDENDUM ON THEIR BID FORM. FAILURE TO DO SO MAY SUBJECT BIDDER TO DISQUALIFICATION.** This addendum consists of one (1) page and five (5) asbestos abatement design drawings. Additionally, architectural drawings are included for reference.

Addendum #1

1. Froberg Elementary School – Additions to Scope of Work Drawings ASB-0 and ASB-1.
2. Hillman Elementary School – Additions to Scope of Work Drawings ASB-0, ASB-1, ASB-2.

Except as modified herein, Addendum No. 1, Project Manual dated December 7, 2018 remain in full force and effect.

Sincerely,
CARNOW, CONIBEAR & ASSOC., LTD.

A handwritten signature in blue ink, appearing to read "Rod Harvey", is written over a horizontal line.

Rod Harvey, P.E., CIH, CSP
Director, Client Services

Froberg Elementary School

4555 20th Street
Rockford, Illinois 61109

ASBESTOS ABATEMENT SCOPE OF WORK:

- 1. Base Bid Item 1: Exterior removal and disposal of existing window assemblies including the frames, and all asbestos-containing interior and exterior perimeter caulk, glazing compounds and putty as detailed in the environmental scope of work drawing ASB-1.
 - a. Remove and salvage existing window air conditioner units for reinstallation by window contractor.
 - b. Remove and salvage existing window treatment for reinstallation by window contractor
- 2. Base Bid Item 2: Exterior removal and disposal of existing door, frames, associated hardware, and all ACM caulking and sealants window assemblies including the frames, and all asbestos-containing interior and exterior perimeter caulk, glazing compounds and putty as detailed in the environmental scope of work drawing ASB-1.
- 3. Alternate Bid Item 1: Removal and disposal of existing door, frames, associated hardware, and all NON-ACM caulking and sealants as detailed in the environmental scope of work drawing ASB-1.

GENERAL CONSTRUCTION / DEMOLITION NOTES:

- 1. The Abatement Contractor is responsible for verifying quantities in the field before pricing. Any questions about the scope or clarifications shall be obtained from the Project Designer prior to bidding. Any interpretations of the design documents shall only be made by the Project Designer.
- 2. Abatement contractor shall perform any interior abatement in such a manner that interior spaces are protected from dust and debris. Abatement contractor will clean all affected interior spaces to pre-demolition conditions.
- 3. Locations for the staging of aerial lifts, materials and dumpsters shall be coordinated with RPS205 prior to mobilization.
- 4. Removal and relocation of building contents necessary to accommodate work shall be the responsibility of RPS 205.
- 5. RPS 205 will provide electrician for connection/disconnections of any electrical necessary to support abatement. Abatement Contractor shall supply all parts and equipment.
- 6. Coordination with the electrician shall be made at least 48 hours prior to mobilization or demobilization.

GENERAL ABATEMENT NOTES:

- 1. All asbestos abatement shall be in accordance with specification Section 02132 (exterior asbestos abatement).
- 2. The Abatement Contractor shall coordinate the abatement schedule with General Contractor, RPS 205, and Carnow Conibear.
- 3. The Abatement Contractor Representative is responsible for attendance at any pre-construction and or coordination meetings prior to mobilization and during all abatement activities.
- 4. Caution signs shall be posted adherent to specification requirements of OSHA 29 CFR 1926.1101(k)(6) at all potential entrances or barriers to the regulated abatement areas.
- 5. Abatement contractor responsible for daily cleanup and disposal of debris generated during abatement activities.

EXTERIOR ABATEMENT NOTES:

- 1. The Abatement Contractor is expected to complete up to 8 windows per work shift.
- 2. Abatement of windows shall be conducted from the building exterior only. Interior building areas shall be sealed air tight with 6-mil poly and as necessary, rigid sheeting and framing at each window opening. At no time shall abatement activities be conducted from the building interior.
- 3. General Contractor responsible for the removal and disposal of all interior window treatments and associated backing/supports.
- 4. Abatement Contractor responsible for the removal and disposal of all existing screens.
- 5. Abatement Contractor responsible for any interior damage exceeding 1" from window framing.
- 6. Abatement Contractor shall document existing conditions of and is responsible for the protection of any exterior landscaping, turf, concrete sidewalks, or interior furnishings from

- damage. Repair or replacement of surfaces damaged during the abatement process shall be the responsibility of the Abatement Contractor.
- 7. Abatement Contractor responsible for the temporary removal and set aside of any existing window air conditioners and associated supports and brackets. Removed A/C units and hardware shall be set on plywood sheeting within the room from where it was removed. Abatement Contractor is NOT responsible for reinstallation of the removed A/C units.
 - 8. The Abatement Contractor is responsible for all demolition associated with the existing window systems. Following the abatement/demolition of the existing window system, the window opening shall be free of any clips, masonry, mortar drips, wood blocking / framing, etc that may interfere with the new window installation.
 - 9. Interior plastic sheeting installed for abatement purposes shall be removed and disposed as abatement waste by the Abatement Contractor immediately following abatement activities.



WINDOW / DOOR BOARD-UP NOTES:

- 1. When windows or doors are removed for abatement purposes, Abatement Contractor responsible for the board-up of building opening prior to abatement. Board-up requirements include, at a minimum, 2"x4" framing and 1/2" plywood sheathing. Board-up shall include 1 layer of 6mil poly sheeting on the exterior side of the board-up when necessary for protection from rain/water.
- 2. Abatement Contractor responsible for the maintenance of board-up until removal by the Window Contractor.
- 3. The Abatement Contractor is expected to maintain board-up of up to 45 windows during the overall window replacement schedule.
- 4. Window Contractor responsible for removal of the board-up and to set aside board up materials for reuse by the Abatement Contractor.

SCHEDULE:


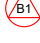
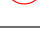

- 1. The work is scheduled for RPS205 Summer Break 2019, as follows:
- 2. NOTE: The exact start and stop dates may be modified for coordination purposes, however time frames to complete each abatement area shall not be exceeded.

K:\Learning\Projects\Rockford School District\Contract 2018\Froberg School\Window Replacement 2019\Design\Froberg 2018 DWG.dwg

DRAWING HISTORY					CLIENT: Rockford Public Schools 501 7th Street Rockford, Illinois 61104	PROJECT NAME: Asbestos Abatement Froberg Elementary School 4555 20th Street Rockford, Illinois 61109	SHEET TITLE: GENERAL NOTES ADDENDUM #1	DESIGNER SIGNATURE 	Carnow, Conibear & Assoc., Ltd. Environmental Consulting Services 600 W. Van Buren St., Suite 500, Chicago, IL 60607 t: 312.782.4486 f: 312.782.5145 www.ccaltd.com 	CCA PROJECT NO. ---
NO.	DATE	DRAWN BY:	CHECKED BY:	REMARKS						DATE: December 31, 2018
1	12/07/18	J. Kalingasan	E. Christian							SHEET NO. ASB-0
2	12/31/18	A. Rodriguez	E. Christian	Addendum #1						
0										



- SCOPE OF WORK:**
- Base Bid item 1:** Exterior removal and disposal of existing window assemblies including including the frames, and all asbestos-containing (ACM) interior and exterior perimeter caulk, glazing compounds, putty and construction mastics. Interior window sills to remain.
 - Base Bid Item 2:** Removal and disposal of existing door, frames, associated hardware, and all ACM caulking and sealants.
 - Alternate Bid Item 1:** Removal and disposal of existing door, frames, associated hardware, and all NON-ACM caulking and sealants.
 - All work per specification number 02132 and all applicable IDPH, IEPA and OSHA regulations.
 - Abatement Contractor to remove up to 8 single windows or 12 banked windows per day. The specific sequencing of the work to be determined and coordinated with the Owner and the General Contractor.
 - Refer to architectural drawings for window and door assembly details.



WINDOW DEMOLITION / EXTERIOR APPROXIMATE ASBESTOS ABATEMENT WORK SCHEDULE:			
TAG	START DATE	END DATE	WORK SEQUENCE
	2/15/2019	2/15/2019	Base Bid Work - Exterior Asbestos Abatement / Window Demolition Mock-up Location
	6/10/2019	7/19/19	Base Bid Work, Item 1 - Exterior Asbestos Abatement / Window Demolition
	6/10/2019	7/19/19	Base Bid Work, Item 2 - Exterior Asbestos Abatement / Door Demolition
	6/10/2019	7/19/19	Alternate Item 1 - Exterior Door Demolition (NON-ACM)

ABATEMENT CONTRACTOR TO REMOVE CEILING TILES AND DISASSEMBLE GRID AS NEEDED TO ACCESS WINDOWS. SALVAGE FOR REINSTALLATION. ABATEMENT CONTRACTOR NOT RESPONSIBLE FOR REINSTALLATION.

FIRST FLOOR
EXTERIOR ASBESTOS ABATEMENT
1/32" = 1' 

DRAWING HISTORY					CLIENT: Rockford Public Schools 501 7th Street Rockford, Illinois 61104	PROJECT NAME: Asbestos Abatement Froberg Elementary School 4555 20th Street Rockford, Illinois 61109	SHEET TITLE: EXTERIOR ASBESTOS ABATEMENT FIRST FLOOR ADDENDUM #1	CCA PROJECT NO. --- DATE: December 31, 2018 SHEET NO. ASB-1
NO.	DATE	DRAWN BY:	CHECKED BY:	REMARKS				
1	12/07/18	J. Kalingasan	E. Christian					
2	12/31/18	A. Rodriguez	E. Christian	Addendum #1				
0								
						PROJECT DESIGNER Rod Harvey IDPH #: 100-01548	DESIGNER SIGNATURE 	Carnow, Conibear & Assoc., Ltd. Environmental Consulting Services 600 W. Van Buren St., Suite 500, Chicago, IL 60607 t: 312.782.4486 f: 312.782.5145 www.ccaltd.com 

Hillman Elementary School

3701 Green Dale Drive
Rockford, Illinois 61109

ASBESTOS ABATEMENT SCOPE OF WORK:

- Base Bid Item 1: Exterior removal and disposal of existing window assemblies including the frames, and all asbestos-containing interior and exterior perimeter caulk, glazing compounds and putty as detailed in the environmental scope of work drawings ASB-1 through ASB-2.
 - Remove and salvage existing window air conditioner units for reinstallation by Window Contractor.
 - Remove and salvage existing interior window treatments in rooms noted in architectural drawings.
- Base Bid Item 2: Removal and disposal of existing window assemblies, including the frames and all NON-ACM interior and exterior perimeter caulk, glazing compounds, putty, and Construction mastics.
- Alternate Bid Item 1: Removal and disposal of existing door, frames, associated hardware, and all NON-ACM caulking and sealants. Removal and disposal of approximately five (5) square feet of Asbestos-Containing flooring (All Layers) at the interior of each door opening.

GENERAL CONSTRUCTION / DEMOLITION NOTES:

- The Abatement Contractor is responsible for verifying quantities in the field before pricing. Any questions about the scope or clarifications shall be obtained from the Project Designer prior to bidding. Any interpretations of the design documents shall only be made by the Project Designer.
- Abatement contractor shall perform any interior abatement in such a manner that interior spaces are protected from dust and debris. Abatement contractor will clean all affected interior spaces to pre-demolition conditions.
- Locations for the staging of aerial lifts, materials and dumpsters shall be coordinated with RPS205 prior to mobilization.
- Removal and relocation of building contents necessary to accommodate work shall be the responsibility of RPS 205.
- RPS 205 will provide electrician for connection/disconnections of any electrical necessary to support abatement. Abatement Contractor shall supply all parts and equipment.
- Coordination with the electrician shall be made at least 48 hours prior to mobilization or demobilization.

GENERAL ABATEMENT NOTES:

- All asbestos abatement shall be in accordance with specification sections 02131 (interior asbestos abatement) or Section 02132 (exterior asbestos abatement).
- Flooring Abatement - If gross removal methods are utilized, Contractor shall perform all work in strict accordance with all IDPH school rules and specification 02131. If non-friable removal methods are utilized (Specification Section 3.11(D)), Contractor shall be responsible for the isolation of the work area(s) with critical seals, warning signs, and the security of the work areas to eliminate access by unauthorized personnel. HEPA filtered negative air machines shall be set up within the work areas and run continuously through the completion of all non-friable work.
- The Abatement Contractor shall coordinate the abatement schedule with General Contractor, RPS 205, and Carnow Conibear.
- The Abatement Contractor Representative is responsible for attendance at any pre-construction and or coordination meetings prior to mobilization and during all abatement activities.
- Caution signs shall be posted adherent to specification requirements of OSHA 29 CFR 1926.1101(k)(6) at all potential entrances or barriers to the regulated abatement areas.
- Abatement contractor responsible for daily cleanup and disposal of debris generated during abatement activities.
- If utilized, worker decontamination enclosure systems shall be constructed in strict accordance with IDPH section 855.410. Clean room shall be sized to accommodate the needs of the work crew. Donning and Doffing of PPE outside of clean room is strictly prohibited.

EXTERIOR ABATEMENT NOTES:

- The specific sequencing of the work to be determined and coordinated with the Owner and Window Contractor.

- Abatement of windows shall be conducted from the building exterior only. Interior building areas shall be sealed air tight with 6-mil poly and as necessary, rigid sheeting and framing at each window opening. At no time shall abatement activities be conducted from the building interior.
- General Contractor responsible for the removal and disposal of all interior window treatments and associated backing/supports.
- Abatement Contractor responsible for the removal and disposal of all existing screens.
- Abatement Contractor responsible for any interior damage exceeding 1" from window framing.
- Abatement Contractor shall document existing conditions of and is responsible for the protection of any exterior landscaping, turf, concrete sidewalks, or interior furnishings from damage. Repair or replacement of surfaces damaged during the abatement process shall be the responsibility of the Abatement Contractor.
- Abatement Contractor responsible for the temporary removal and set aside of any existing window air conditioners and associated supports and brackets. Removed A/C units and hardware shall be set on plywood sheeting within the room from where it was removed. Abatement Contractor is NOT responsible for reinstallation of the removed A/C units.
- The Abatement Contractor is responsible for all demolition associated with the existing window systems. Following the abatement/demolition of the existing window system, the window opening shall be free of any clips, masonry, mortar drips, wood blocking / framing, etc that may interfere with the new window installation.
- Interior plastic sheeting installed for abatement purposes shall be removed and disposed as abatement waste by the Abatement Contractor immediately following abatement activities.

WINDOW / DOOR BOARD-UP NOTES:

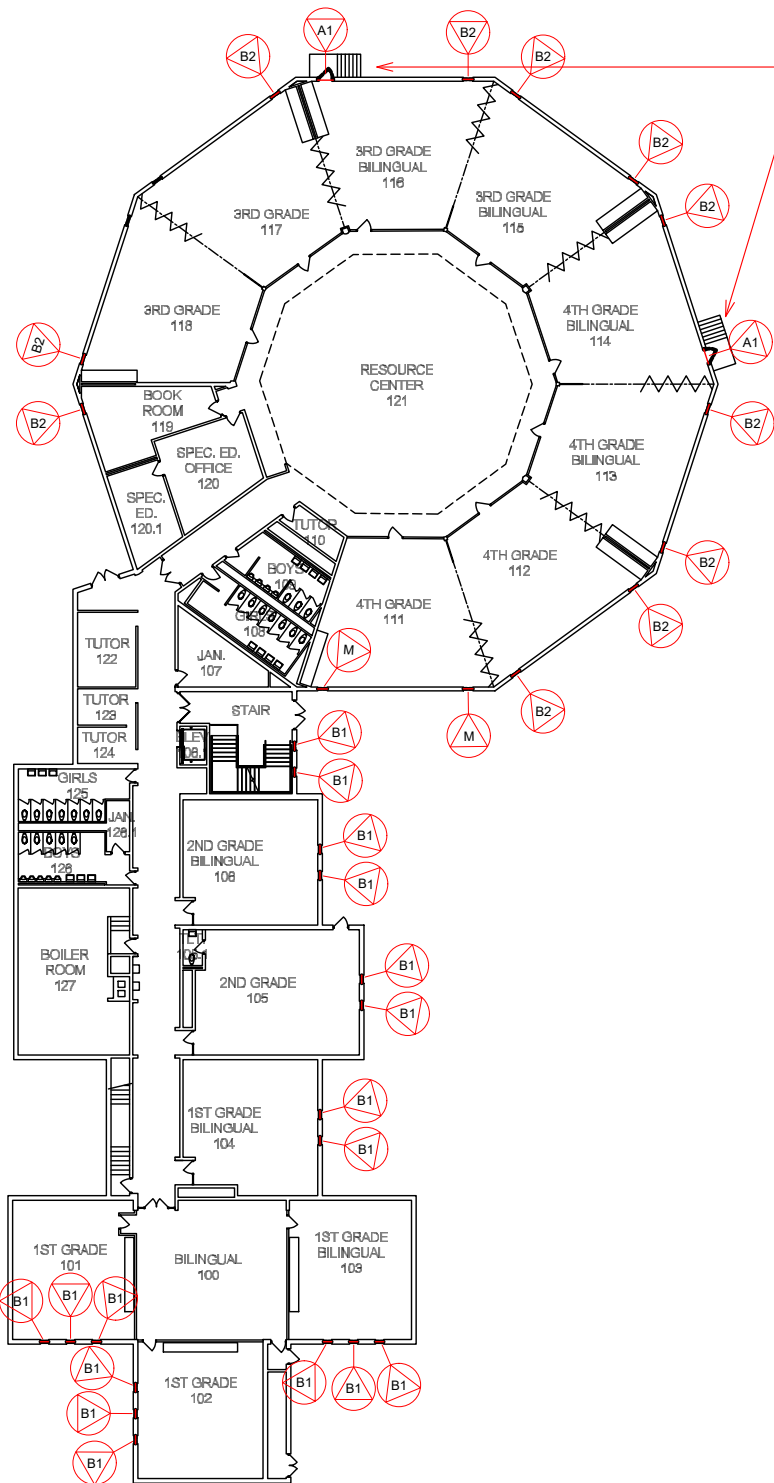
- When windows or doors are removed for abatement purposes, Abatement Contractor responsible for the board-up of building opening prior to abatement. Board-up requirements include, at a minimum, 2"x4" framing and 1/2" plywood sheathing. Board-up shall include 1 layer of 6mil poly sheeting on the exterior side of the board-up when necessary for protection from rain/water.
- Abatement Contractor responsible for the maintenance of board-up until removal by the Window Contractor.
- The Abatement Contractor is expected to maintain board-up of up to 45 windows during the overall window replacement schedule.
- Window Contractor responsible for removal of the board-up and to set aside board up materials for reuse by the Abatement Contractor.

SCHEDULE:

- The work is scheduled for RPS205 Summer Break 2019, as follows:
- NOTE: The exact start and stop dates may be modified for coordination purposes, however time frames to complete each abatement area shall not be exceeded.





DRAWING HISTORY					CLIENT: Rockford Public Schools 501 7th Street Rockford, Illinois 61104	PROJECT NAME: Asbestos Abatement Hillman Elementary School 3701 Green Dale Drive Rockford, Illinois 61109	SHEET TITLE: GENERAL NOTES ADDENDUM #1	Carnow, Conibear & Assoc., Ltd. Environmental Consulting Services 600 W. Van Buren St., Suite 500, Chicago, IL 60607 t: 312.782.4486 f: 312.782.5145 www.ccaltd.com CARNOW CONIBEAR	CCA PROJECT NO. ---
NO.	DATE	DRAWN BY:	CHECKED BY:	REMARKS					DATE: December 31, 2018
1	12/07/2018	J. Kalingasan	E. Christian						
2	12/31/2018	A. Rodriguez	E. Christian	Addendum #1					
0									SHEET NO. ASB-0

ABATEMENT CONTRACTOR TO INSTALL TEMPORARY WOOD FRAMING WITH BLOCKING AND POLY SHEETING ON THE INTERIOR OF THE DOOR SYSTEM TO ALLOW EXTERIOR REMOVAL OF THE EXISTING DOOR ASSEMBLY, ASSOCIATED CAULKING, AND FLOORING AT THRESHOLD.

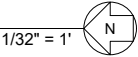


- SCOPE OF WORK:**
- Base Bid Item 1:** Exterior removal and disposal of existing window assemblies including including the frames, and all asbestos-containing (ACM) interior and exterior perimeter caulk, glazing compounds, putty and construction mastics. Interior window sills to remain.
 - Base Bid Item 2:** Removal and disposal of existing window assemblies, including the frames and all NON-ACM interior and exterior perimeter caulk, glazing compounds, putty, and Construction mastics.
 - Alternate Bid Item 1:** Removal and disposal of existing door, frames, associated hardware, and all NON-ACM caulking and sealants. Removal and disposal of approximately five (5) square feet of Asbestos-Containing flooring (All Layers) at the interior of each door opening.
 - All work per specification number 02132 and all applicable IDPH, IEPA and OSHA regulations.
 - The specific sequencing of the work to be determined and coordinated with the Owner and the Window Contractor. Refer to architectural drawings for window and door assembly details.
 - In areas with drop ceiling Abatement Contractor to remove ceiling tiles and disassemble grid as needed to access windows. Salvage for reinstallation. Abatement Contractor not responsible for reinstallation.
 - If necessary to protect interior of rooms, Abatement Contractor to install temporary wood framing with blocking and poly sheeting on the interior of the window frame system to allow exterior removal of existing window assembly, associated caulk, and glazing.

**WINDOW DEMOLITION / EXTERIOR
APPROXIMATE ASBESTOS ABATEMENT
WORK SCHEDULE:**

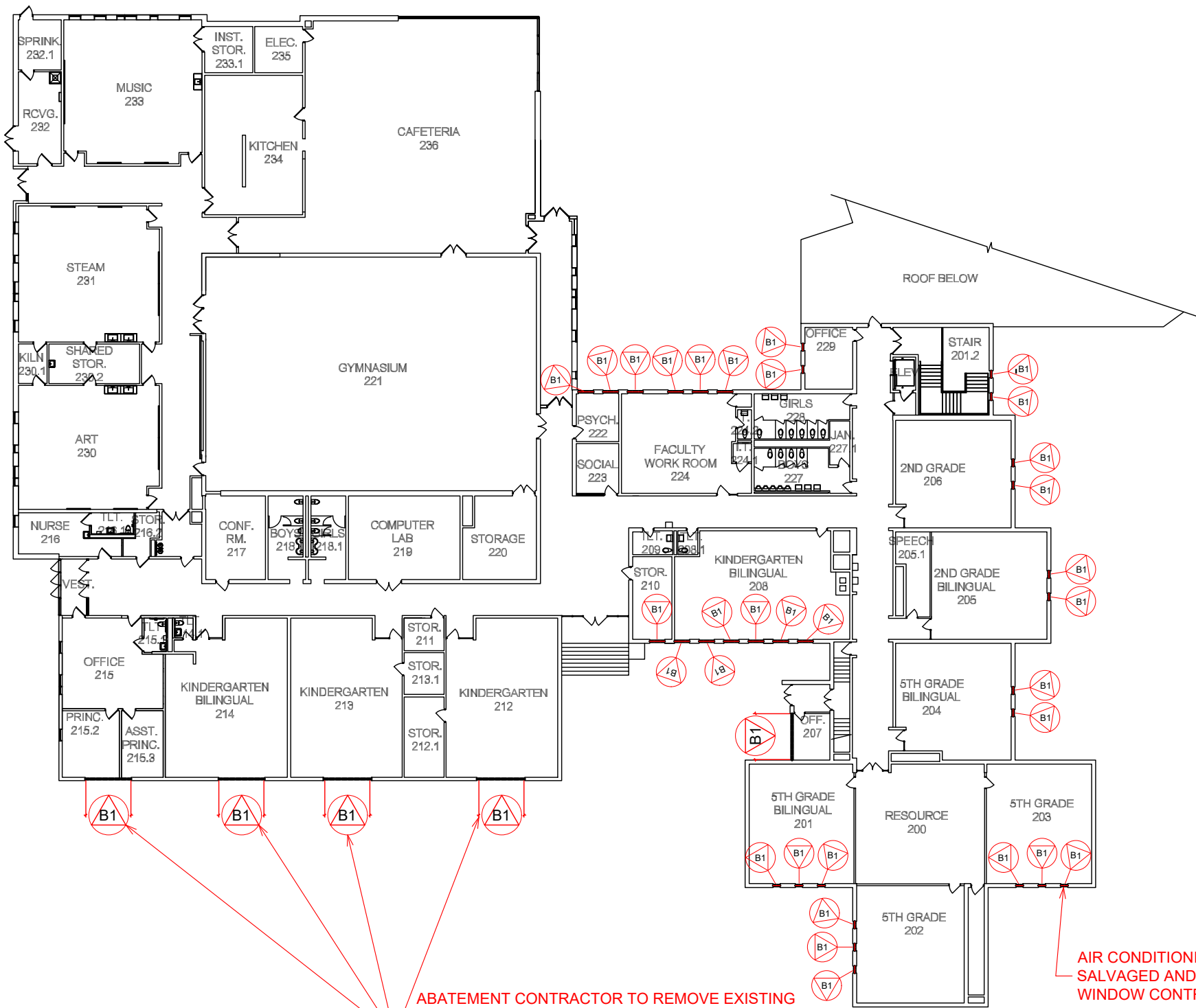
TAG	START DATE	END DATE	WORK SEQUENCE
	2/15/2019	2/15/2019	Base Bid Work - Exterior asbestos abatement / Window Demolition Mock-up Location
	6/10/2019	8/19/19	Base Bid Item 1 - Exterior asbestos abatement / Window Demolition
	6/10/2019	8/19/19	Base Bid Item 2 - Exterior Window Demolition (NON-ACM)
	6/10/2019	8/19/19	Alternate Bid item 1 - Exterior Door Demolition Interior ACM Flooring Abatement (Approximately 5 square feet, all layers)

FIRST FLOOR
EXTERIOR ASBESTOS ABATEMENT



K:_Comped\Projects\Rockford_School_District\Contract 2019\Hillman_School\Window_Replacement_2019\Design\CA\Drawings_2019\DWG.dwg

DRAWING HISTORY					CLIENT: Rockford Public Schools 501 7th Street Rockford, Illinois 61104	PROJECT NAME: Asbestos Abatement Hillman Elementary School 3701 Green Dale Drive Rockford, Illinois 61109	SHEET TITLE: EXTERIOR ASBESTOS ABATEMENT FIRST FLOOR ADDENDUM #1	600 W. Van Buren St., Suite 500, Chicago, IL 60607 t: 312.782.4486 f: 312.782.5145 www.ccaltd.com CARNOW CONIBEAR	CCA PROJECT NO.
NO.	DATE	DRAWN BY:	CHECKED BY:	REMARKS					---
1	12/07/2018	J. Kalingasan	E. Christian						DATE: December 31, 2018
2	12/31/2018	A. Rodriguez	E. Christian	Addendum #1					SHEET NO.
0									ASB-1



SECOND FLOOR
EXTERIOR ASBESTOS ABATEMENT

1/32" = 1'



- SCOPE OF WORK:**
- Base Bid Item 1:** Exterior removal and disposal of existing window assemblies including including the frames, and all asbestos-containing (ACM) interior and exterior perimeter caulk, glazing compounds, putty and construction mastics. Interior window sills to remain.
 - Base Bid Item 2:** Removal and disposal of existing window assemblies, including the frames and all NON-ACM interior and exterior perimeter caulk, glazing compounds, putty, and Construction mastics.
 - Alternate Bid Item 1:** Removal and disposal of existing door, frames, associated hardware, and all NON-ACM caulking and sealants. Removal and disposal of approximately five (5) square feet of Asbestos-Containing flooring (All Layers) at the interior of each door opening.
 - All work per specification number 02132 and all applicable IDPH, IEPA and OSHA regulations.
 - The specific sequencing of the work to be determined and coordinated with the Owner and the Window Contractor. Refer to architectural drawings for window and door assembly details.
 - In areas with drop ceiling Abatement Contractor to remove ceiling tiles and disassemble grid as needed to access windows. Salvage for reinstallation. Abatement Contractor not responsible for reinstallation.
 - If necessary to protect interior of rooms, Abatement Contractor to install temporary wood framing with blocking and poly sheeting on the interior of the window frame system to allow exterior removal of existing window assembly, associated caulk, and glazing.

WINDOW DEMOLITION / EXTERIOR APPROXIMATE ASBESTOS ABATEMENT WORK SCHEDULE:			
TAG	START DATE	END DATE	WORK SEQUENCE
M	2/15/2019	2/15/2019	Base Bid Work - Exterior asbestos abatement / Window Demolition Mock-up Location
B1	6/10/2019	8/19/19	Base Bid Item 1 - Exterior asbestos abatement / Window Demolition
B2	6/10/2019	8/19/19	Base Bid Item 2 - Exterior Window Demolition (NON-ACM)
A1	6/10/2019	8/19/19	Alternate Bid item 1 - Exterior Door Demolition Interior ACM Flooring Abatement (Approximately 5 square feet, all layers)

Carnow, Conibear & Assoc., Ltd.
Environmental Consulting Services
600 W. Van Buren St., Suite 500, Chicago, IL 60607
t: 312.782.4486 f: 312.782.5145
www.ccaltd.com

CARNOW CONIBEAR

CCA PROJECT NO. ---
DATE: December 31, 2018
SHEET NO. **ASB-2**

DRAWING HISTORY					CLIENT: Rockford Public Schools 501 7th Street Rockford, Illinois 61104	PROJECT NAME: Asbestos Abatement Hillman Elementary School 3701 Green Dale Drive Rockford, Illinois 61109	SHEET TITLE: EXTERIOR ASBESTOS ABATEMENT FIRST FLOOR ADDENDUM #1	DESIGNER SIGNATURE 	PROJECT DESIGNER Rod Harvey IDPH #: 100-01548
NO.	DATE	DRAWN BY:	CHECKED BY:	REMARKS					
1	12/07/2018	J. Kalingasan	E. Christian						
2	12/31/2018	A. Rodriguez	E. Christian	Addendum #1					
0									


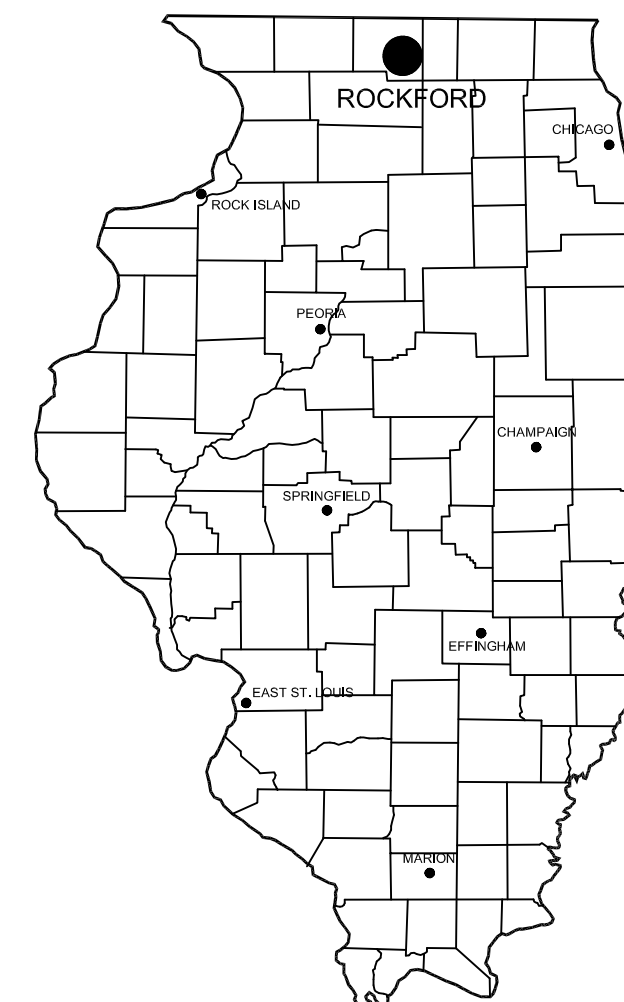
WINDOW REPLACEMENT PROJECT FOR FROBERG ELEMENTARY

OWNER

ROCKFORD PUBLIC SCHOOL DISTRICT 205



ROCKFORD
PUBLIC SCHOOLS

<div>ARCHITECT OF RECORD</div> <div><div><div>RICHARD L. JOHNSON ASSOCIATES</div><div>4703 Charles Street</div><div>Rockford IL. 61108</div><div>PHONE: 815/398-1231 FAX 815/398-1280</div><div>www.rljarch.com</div><div>IL Design Firm No. 187-000524</div></div><div><div><div>STATE OF ILLINOIS</div><div>SCOTT R. JOHNSON</div><div>01 4871</div><div>LICENSED ARCHITECT</div></div><div><div></div><div>EXPIRES 11-30-2018</div><div>12-1-2018</div><div>DATE</div></div></div></div>		CIVIL	STRUCTURAL	MECHANICAL / ELECTRICAL / PLUMBING	FOOD SERVICE
<div>SHEET INDEX</div> <div><div><div>TITLE SHEET</div><div>T101 TITLE SHEET</div><div>ARCHITECTURAL</div><div><div>A101 DEMOLITION PLAN</div><div>A102 DEMOLITION EXTERIOR ELEVATIONS</div><div>A103 REVISED PLAN</div><div>A104 REVISED EXTERIOR ELEVATIONS</div><div>A105 FRAME TYPES</div><div>A106 HEAD, JAMB AND SILL DETAILS</div></div></div></div>			<div>BID INDEX</div> <div><div>ALTERNATE BID #F1:</div><div>PROVIDE NEW DOORS, FRAMES AND HARDWARE AT THE GYMNASIUM</div></div>	<div>STATE MAP</div> <div></div>	

**WINDOW REPLACEMENT PROJECT FOR PROBERG ELEMENTARY
ROCKFORD PUBLIC SCHOOL DISTRICT 205
ROCKFORD, ILLINOIS 61104**



RICHARD L. JOHNSON
ASSOCIATES | ARCHITECTS

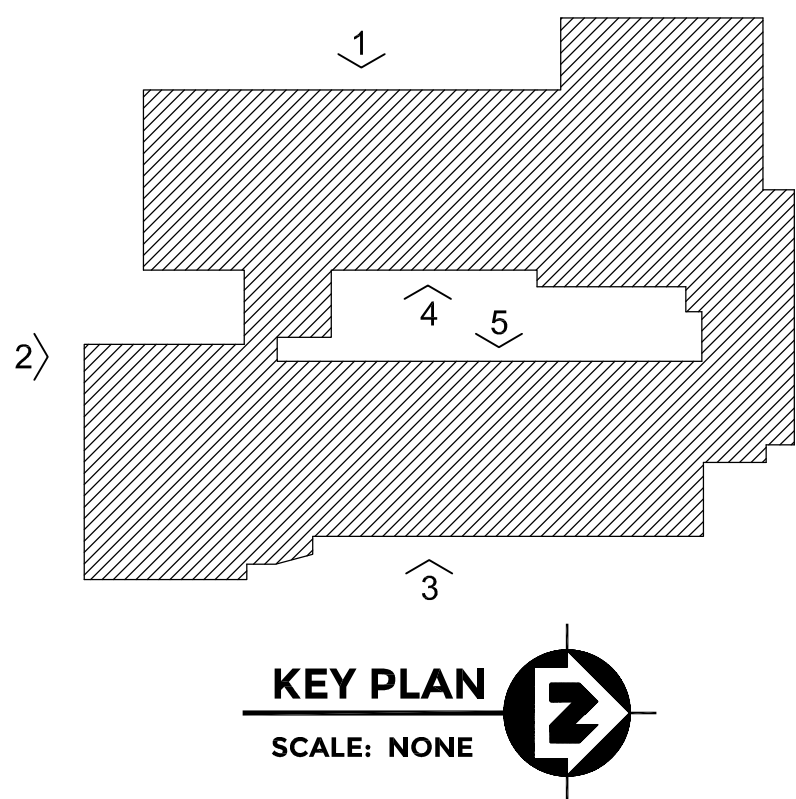
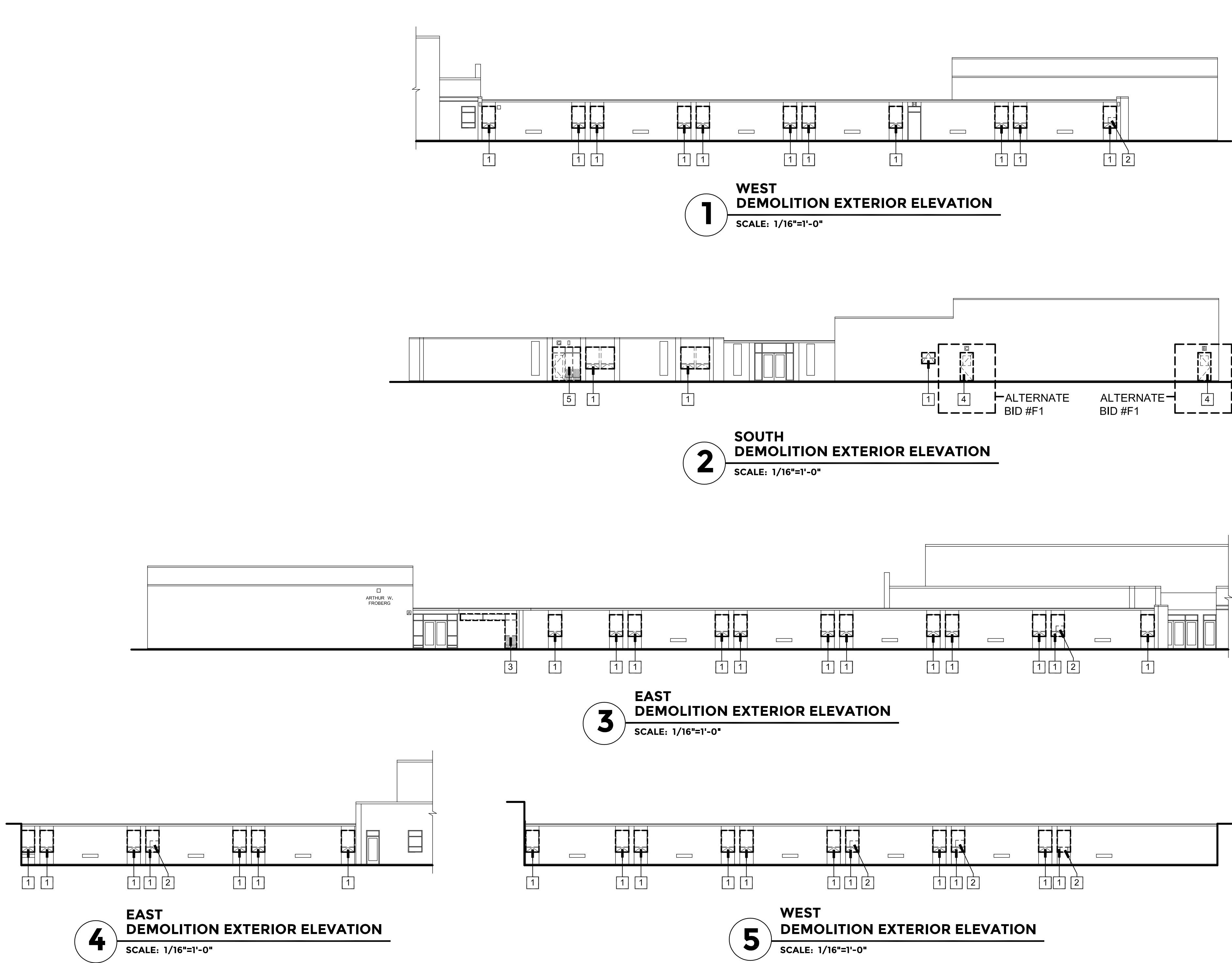
SHEET IDENTIFICATION

TITLE SHEET

PROJECT INFORMATION	
Date	December 1, 2018
Rev. Date	

SHEET NUMBER

T101
OF
1

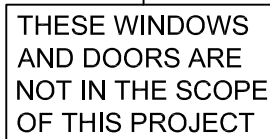


GENERAL DEMOLITION NOTES				
1. THE DEMOLITION PLAN IS PROVIDED AS AID IN PLANNING AND DOES NOT RELIEVE THE CONTRACTOR'S RESPONSIBILITY IN FIELD VERIFYING THE EXISTING JOB SITE.				
2. PROVIDE ALL TEMPORARY SHORING AS REQUIRED TO SUPPORT STRUCTURES AND FINISHES TO REMAIN.				
3. THE CONTRACTOR SHALL COORDINATE ALL FINAL LOCATIONS OF AIR CONDITIONERS WITH THE OWNER / ARCHITECT.				
4. ANY WALLS OR CEILINGS DAMAGED BY THE ASBESTOS REMOVAL CONTRACTOR SHALL BE REPAIRED AND PAINTED BY THE ASBESTOS REMOVAL CONTRACTOR. ANY WALLS OR CEILINGS DAMAGED DURING THE COURSE OF THE WINDOW INSTALLATION PROJECT SHALL BE REPAIRED AND PAINTED BY THE WINDOW CONTRACTOR.				
5. SEE DEMOLITION ELEVATIONS FOR ADDITIONAL INFORMATION.				
6. EXISTING WINDOW TREATMENTS REMOVED BY ASBESTOS CONTRACTOR, SALVAGED AND TURNED OVER TO THE WINDOW CONTRACTOR FOR REINSTALLATION.				
7. ASBESTOS CONTRACTOR AND WINDOW CONTRACTOR TO REPORT ANY DETERIORATED LINTELS TO ARCHITECT AND OWNER. OWNER TO REPAIR OR REPLACE AS REQUIRED.				

DEMOLITION BOX NOTES				
1	ASBESTOS CONTRACTOR HIRED SEPARATELY BY OWNER WILL REMOVE ALUMINUM WINDOW AND CAULKING AND INSTALL PLYWOOD AND FRAMING TO FILL IN THE OPENINGS. WINDOW CONTRACTOR TO REMOVE PLYWOOD AND FRAMING AND TURN OVER TO THE ASBESTOS CONTRACTOR.			
2	ASBESTOS CONTRACTOR HIRED SEPARATELY BY OWNER SHALL REMOVE EXISTING AIR CONDITIONER AND SUPPORTS AND TURN OVER TO THE WINDOW CONTRACTOR FOR REINSTALLATION.			
3	ASBESTOS CONTRACTOR HIRED SEPARATELY BY OWNER WILL REMOVE HOLLOW METAL WINDOW AND CAULKING AND INSTALL PLYWOOD AND FRAMING TO FILL IN THE OPENINGS. WINDOW CONTRACTOR TO REMOVE PLYWOOD AND FRAMING AND TURN OVER TO THE ASBESTOS CONTRACTOR.			
4	UNDER ALTERNATE BID #F1: ASBESTOS CONTRACTOR HIRED SEPARATELY BY OWNER WILL REMOVE HOLLOW METAL DOOR, FRAME, HARDWARE AND CAULKING AND INSTALL PLYWOOD AND FRAMING TO FILL IN THE OPENINGS. WINDOW CONTRACTOR TO REMOVE PLYWOOD AND FRAMING AND TURN OVER TO THE ASBESTOS CONTRACTOR.			
5	ASBESTOS CONTRACTOR HIRED SEPARATELY BY OWNER WILL REMOVE HOLLOW METAL DOOR, FRAME, HARDWARE AND CAULKING AND INSTALL PLYWOOD AND FRAMING TO FILL IN THE OPENINGS. WINDOW CONTRACTOR TO REMOVE PLYWOOD AND FRAMING AND TURN OVER TO THE ASBESTOS CONTRACTOR.			
6	ASBESTOS CONTRACTOR HIRED SEPARATELY BY OWNER TO REMOVE EXISTING WINDOW TREATMENT, SALVAGE AND TURN OVER TO THE WINDOW CONTRACTOR FOR REINSTALLATION.			

SHEET NUMBER

SCALE: NONE



GENERAL NOTES

1. THE CONTRACTOR SHALL VERIFY ALL EXISTING WINDOW DIMENSIONS PRIOR TO BIDDING. THE DIMENSIONS ON THE DRAWING ARE +/-.
2. PROVIDE BACKER ROD AND SEALANT AROUND PERIMETER OF NEW WINDOW AND ENTRANCE FRAMES - EACH SIDE OF FRAMES.
3. CONTRACTOR IS RESPONSIBLE FOR ADDING STRUCTURAL REINFORCEMENT AS REQUIRED TO MEET STRUCTURAL LOADING FOR ALL WINDOW TYPES.
4. WINDOWS SHALL OPEN AS FAR AS POSSIBLE. AT END OF PROJECT THE OWNER/ARCHITECT SHALL DETERMINE WHICH OPERABLE WINDOWS WILL REQUIRE A 4" MAXIMUM OPENING. CONTRACTOR TO ADJUST OPENING AS REQUIRED.
5. PROVIDE A PROPER CAULK JOINT BETWEEN A/C UNITS AND METAL PANELS.
6. PROVIDE TREATED WOOD SHIMS AND BLOCKING AS REQUIRED FOR WINDOW INSTALLATIONS. APPLY A COATING TO THE WOOD BLOCKING SO AS TO NOT CHEMICALLY REACT WITH THE ALUMINUM.
7. CONTRACTOR TO RESTORE ANY DISTURBED GRASS AREAS WITH SEED BACK TO ORIGINAL CONDITIONS AFTER WORK IS COMPLETE.
8. CONTRACTOR TO VERIFY EXACT LOCATIONS AND SIZES OF AIR CONDITIONER UNITS IN NEW WINDOW SYSTEM WITH OWNER/ARCHITECT.
9. LINTELS AT WINDOWS TO BE PAINTED THE SAME COLOR AS WINDOWS.
10. CONTRACTOR TO PROVIDE INTERIOR METAL TRIM AT FLOORS, WALLS AND CEILINGS AS REQUIRED TO COVER ANY EXPOSED CONSTRUCTION WHETHER SHOWN ON DETAILS OR NOT.
11. INSULATED METAL PANEL COLOR TO MATCH WINDOW FRAMING COLOR. VERIFY COLOR WITH OWNER.
12. CAULK COLOR TO MATCH WINDOW FRAMING COLOR.
13. WINDOW CONTRACTOR SHALL BE RESPONSIBLE FOR THE FINAL CLEANING OF THE NEW WINDOWS ON THE EXTERIOR AND THE INTERIOR.
14. DIMENSIONS SHOWN ARE TAKEN FROM EXISTING INTERIOR JAMB TO EXISTING INTERIOR JAMB, AND FROM EXISTING INTERIOR SILL TO EXISTING INTERIOR HEAD.
15. OUTSIDE FACE OF NEW FRAME TO LINE WITH OUTSIDE FACE OF EXISTING FRAME UNLESS NOTED OTHERWISE.

RENOVATION KEY NOTES

- 1 WINDOW CONTRACTOR TO INSTALL NEW ALUMINUM WINDOW SYSTEM AND GLAZING COMPLETE.
- 2 WINDOW CONTRACTOR TO INSTALL NEW ALUMINUM DOOR, FRAME, HARDWARE AND GLAZING COMPLETE.
- 3 UNDER ALTERNATE BID #1: WINDOW CONTRACTOR TO INSTALL NEW ALUMINUM DOOR, FRAME, HARDWARE AND GLAZING COMPLETE.
- 4 WINDOW CONTRACTOR TO INSTALL EXISTING AIR CONDITIONER IN NEW INSULATED METAL PANEL (GL-2). REINSTALL EXISTING A/C SUPPORTS. INSTALL SEALANT BETWEEN THE PANEL AND THE A/C UNIT TO MATCH PANEL COLOR.
- 5 THIS WINDOW TO BE A MOCK-UP WINDOW. SEE SPECIFICATIONS.
- 6 WINDOW CONTRACTOR TO REINSTALL SALVAGED SHADE.

S5 **SILL DETAIL**
SCALE: 1-1/2"=1'-0"

WINDOW REPLACEMENT PROJECT FOR HILLMAN ELEMENTARY

OWNER

ROCKFORD PUBLIC SCHOOL DISTRICT 205



ROCKFORD
PUBLIC SCHOOLS

ARCHITECT OF RECORD RICHARD L. JOHNSON ASSOCIATES 4703 Charles Street Rockford IL. 61108 PHONE: 815/398-1231 FAX 815/398-1280 www.rljarch.com IL Design Firm No. 187-000524		CIVIL	STRUCTURAL	MECHANICAL / ELECTRICAL / PLUMBING	FOOD SERVICE
SHEET INDEX			BID INDEX	STATE MAP	
<u>TITLE SHEET</u> T101 TITLE SHEET <u>ARCHITECTURAL</u> A101 DEMOLITION PLANS A102 DEMOLITION EXTERIOR ELEVATIONS A103 REVISED PLANS A104 REVISED EXTERIOR ELEVATIONS A105 FRAME TYPES A106 HEAD AND JAMB DETAILS A107 SILL DETAILS			<u>ALTERNATE BID #H1:</u> PROVIDE NEW DOORS, FRAMES AND HARDWARE AT CLASSROOM 114 AND CLASSROOM 116. <u>ALTERNATE BID #H2:</u> PROVIDE ALUMINUM PANEL SYSTEM AT WINDOW TYPES W10 AND W11.		

WINDOW REPLACEMENT PROJECT FOR HILLMAN ELEMENTARY
ROCKFORD PUBLIC SCHOOL DISTRICT 205
 ROCKFORD, ILLINOIS 61104



RICHARD L. JOHNSON
ASSOCIATES | ARCHITECTS

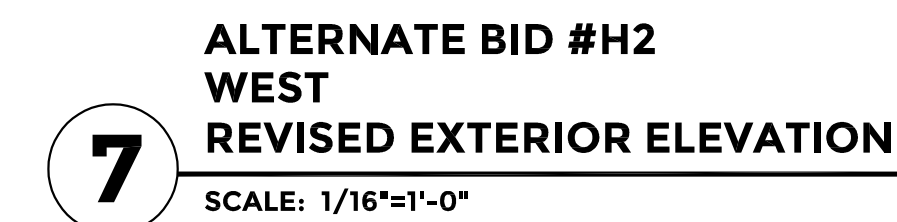
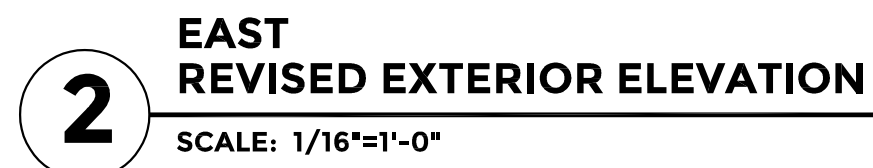
SHEET IDENTIFICATION

TITLE SHEET

PROJECT INFORMATION	
Date	December 1, 2018
Rev. Date	

SHEET NUMBER

T101
OF
1

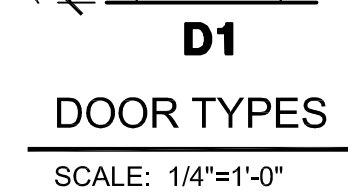


KEY PLAN
SCALE: NONE

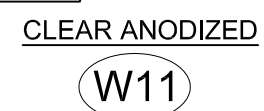
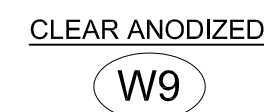
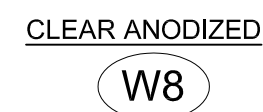
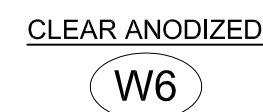
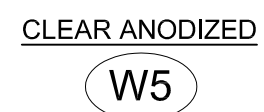
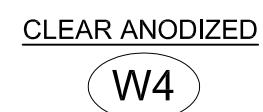
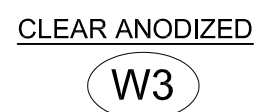
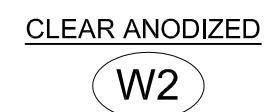
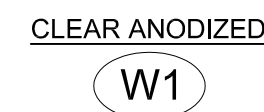
1. THE CONTRACTOR SHALL VERIFY ALL EXISTING WINDOW DIMENSIONS PRIOR TO BIDDING. THE DIMENSIONS ON THE DRAWING ARE +/-.
2. PROVIDE BACKER ROD AND SEALANT AROUND PERIMETER OF NEW WINDOW AND ENTRANCE FRAMES. - EACH SIDE OF FRAMES.
3. CONTRACTOR IS RESPONSIBLE FOR ADDING STRUCTURAL REINFORCEMENT AS REQUIRED TO MEET STRUCTURAL LOADING FOR ALL WINDOW TYPES.
4. WINDOWS SHALL OPEN AS FAR AS POSSIBLE. AT END OF PROJECT THE OWNER/ARCHITECT SHALL DETERMINE WHICH OPERABLE WINDOWS WILL REQUIRE A 4" MAXIMUM OPENING. CONTRACTOR TO ADJUST OPENING AS REQUIRED.
5. PROVIDE A PROPER CAULK JOINT BETWEEN A/C UNITS AND METAL PANELS.
6. PROVIDE TREATED WOOD SHIMS AND BLOCKING AS REQUIRED FOR WINDOW INSTALLATIONS. APPLY A COATING TO THE WOOD BLOCKING SO AS TO NOT CHEMICALLY REACT WITH THE ALUMINUM.
7. CONTRACTOR TO RESTORE ANY DISTURBED GRASS AREAS WITH SEED BACK TO ORIGINAL CONDITIONS AFTER WORK IS COMPLETE.
8. CONTRACTOR TO VERIFY EXACT LOCATIONS AND SIZES OF AIR CONDITIONER UNITS IN NEW WINDOW SYSTEM WITH OWNER/ARCHITECT.
9. LINTELS AT WINDOWS TO BE PAINTED THE SAME COLOR AS WINDOWS.
10. CONTRACTOR TO PROVIDE INTERIOR METAL TRIM AT FLOORS, WALLS, AND CEILINGS AS REQUIRED TO COVER ANY EXPOSED CONSTRUCTION, WHETHER SHOWN ON DETAILS OR NOT.
11. INSULATED METAL PANEL COLOR TO MATCH WINDOW FRAMING COLOR. VERIFY COLOR WITH OWNER.
12. CAULK COLOR TO MATCH WINDOW FRAMING COLOR.
13. WINDOW CONTRACTOR SHALL BE RESPONSIBLE FOR THE FINAL CLEANING OF THE NEW WINDOWS ON THE EXTERIOR AND THE INTERIOR.
14. DIMENSIONS SHOWN ARE TAKEN FROM EXISTING INTERIOR JAMB TO EXISTING INTERIOR JAMB, AND FROM EXISTING INTERIOR SILL TO EXISTING INTERIOR HEAD.
15. OUTSIDE FACE OF NEW FRAME TO LINE WITH OUTSIDE FACE OF EXISTING FRAME UNLESS NOTED OTHERWISE.

- ① WINDOW CONTRACTOR TO INSTALL NEW ALUMINUM WINDOW SYSTEM AND GLAZING COMPLETE.
- ② WINDOW CONTRACTOR TO INSTALL EXISTING AIR CONDITIONER IN NEW INSULATED ALUM. PANEL (GL-2). REINSTALL EXISTING A/C SUPPORTS. INSTALL SEALANT BETWEEN THE PANEL AND THE A/C UNIT TO MATCH PANEL COLOR.
- ③ UNDER ALTERNATE BID #11: WINDOW CONTRACTOR TO INSTALL NEW ALUMINUM DOOR, FRAME, HARDWARE AND GLAZING COMPLETE.
- ④ THIS WINDOW TO BE A MOCK-UP WINDOW. SEE SPECIFICATIONS.
- ⑤ WINDOW CONTRACTOR TO INSTALL NEW SHADE. SEE SPECIFICATIONS.
- ⑥ UNDER ALTERNATE BID #12: WINDOW CONTRACTOR TO INSTALL NEW CLEAR ANODIZED ALUMINUM LOUVER. MATCH EXISTING SIZE - V.I.F. EXTEND DUCTWORK AS REQUIRED.
- ⑦ UNDER ALTERNATE BID #2: INSTALL NEW ALUMINUM PANEL SYSTEM.
- ⑧ UNDER ALTERNATE BID #2: ALUMINUM PANEL REVEAL.
- ⑨ WINDOW CONTRACTOR TO REINSTALL SALVAGED SHADE.
- ⑩ UNDER ALTERNATE BID #2: WINDOW CONTRACTOR TO INSTALL NEW ALUMINUM WINDOW SYSTEM AND GLAZING COMPLETE.

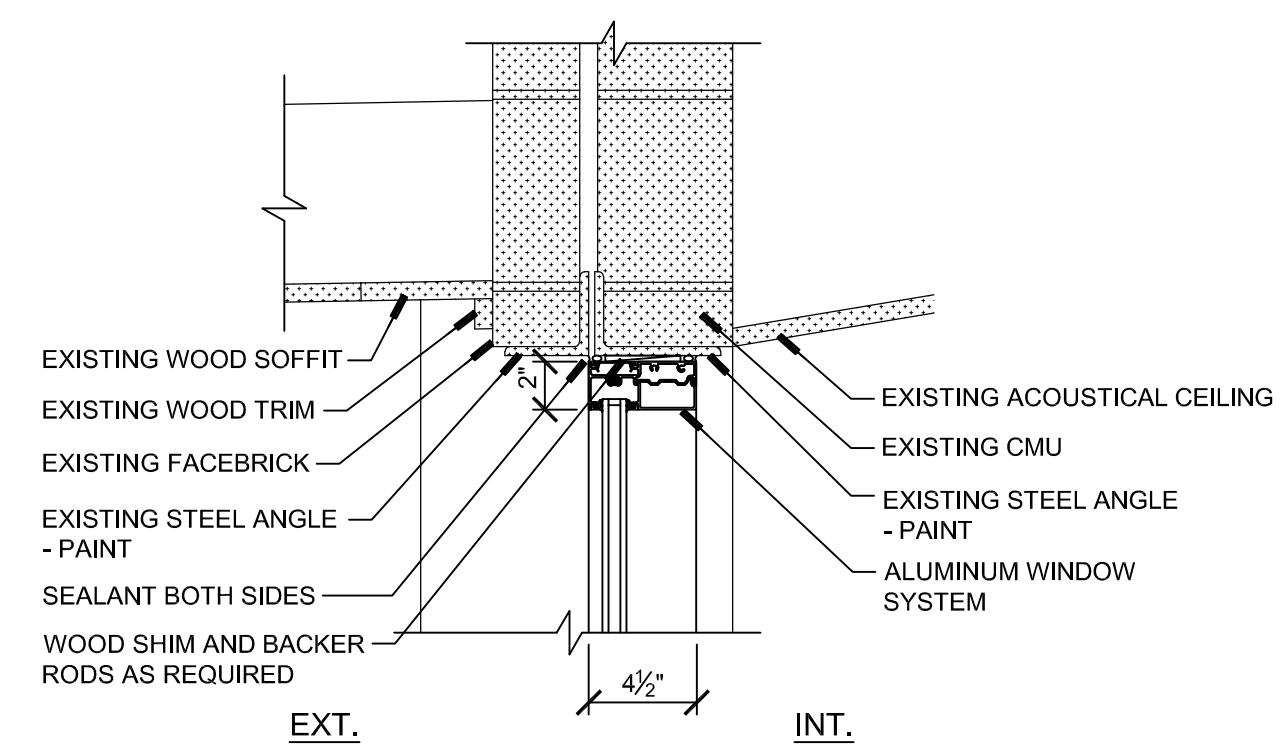
1. THE CONTRACTOR SHALL VERIFY ALL EXISTING WINDOW DIMENSIONS PRIOR TO BIDDING. THE DIMENSIONS ON THE DRAWING ARE +/-.
2. PROVIDE BACKER ROD AND SEALANT AROUND PERIMETER OF NEW WINDOW AND ENTRANCE FRAMES - EACH SIDE OF FRAMES.
3. CONTRACTOR IS RESPONSIBLE FOR ADDING STRUCTURAL REINFORCEMENT AS REQUIRED TO MEET STRUCTURAL LOADING FOR ALL WINDOW TYPES.
4. WINDOWS SHALL OPEN AS FAR AS POSSIBLE. AT END OF PROJECT THE OWNER/ARCHITECT SHALL DETERMINE WHICH OPERABLE WINDOWS WILL REQUIRE A 4" MAXIMUM OPENING. CONTRACTOR TO ADJUST OPENING AS REQUIRED.
5. PROVIDE A PROPER CAULK JOINT BETWEEN A/C UNITS AND METAL PANELS.
6. PROVIDE TREATED WOOD SHIMS AND BLOCKING AS REQUIRED FOR WINDOW INSTALLATIONS. APPLY A COATING TO THE WOOD BLOCKING SO AS TO NOT CHEMICALLY REACT WITH THE ALUMINUM.
7. CONTRACTOR TO RESTORE ANY DISTURBED GRASS AREAS WITH SEED BACK TO ORIGINAL CONDITIONS AFTER WORK IS COMPLETE.
8. CONTRACTOR TO VERIFY EXACT LOCATIONS AND SIZES OF AIR CONDITIONER UNITS IN NEW WINDOW SYSTEM WITH OWNER/ARCHITECT.
9. LINTELS AT WINDOWS TO BE PAINTED THE SAME COLOR AS WINDOWS.
10. CONTRACTOR TO PROVIDE INTERIOR METAL TRIM AT FLOORS, WALLS AND CEILINGS AS REQUIRED TO COVER ANY EXPOSED CONSTRUCTION WHETHER SHOWN ON DETAILS OR NOT.
11. INSULATED METAL PANEL COLOR TO MATCH WINDOW FRAMING COLOR. VERIFY COLOR WITH OWNER.
12. CAULK COLOR TO MATCH WINDOW FRAMING COLOR.
13. WINDOW CONTRACTOR SHALL BE RESPONSIBLE FOR THE FINAL CLEANING OF THE NEW WINDOWS ON THE EXTERIOR AND THE INTERIOR.
14. DIMENSIONS SHOWN ARE TAKEN FROM EXISTING INTERIOR JAMB TO EXISTING INTERIOR JAMB, AND FROM EXISTING INTERIOR SILL TO EXISTING INTERIOR HEAD.
15. OUTSIDE FACE OF NEW FRAME TO LINE WITH OUTSIDE FACE OF EXISTING FRAME UNLESS NOTED OTHERWISE.



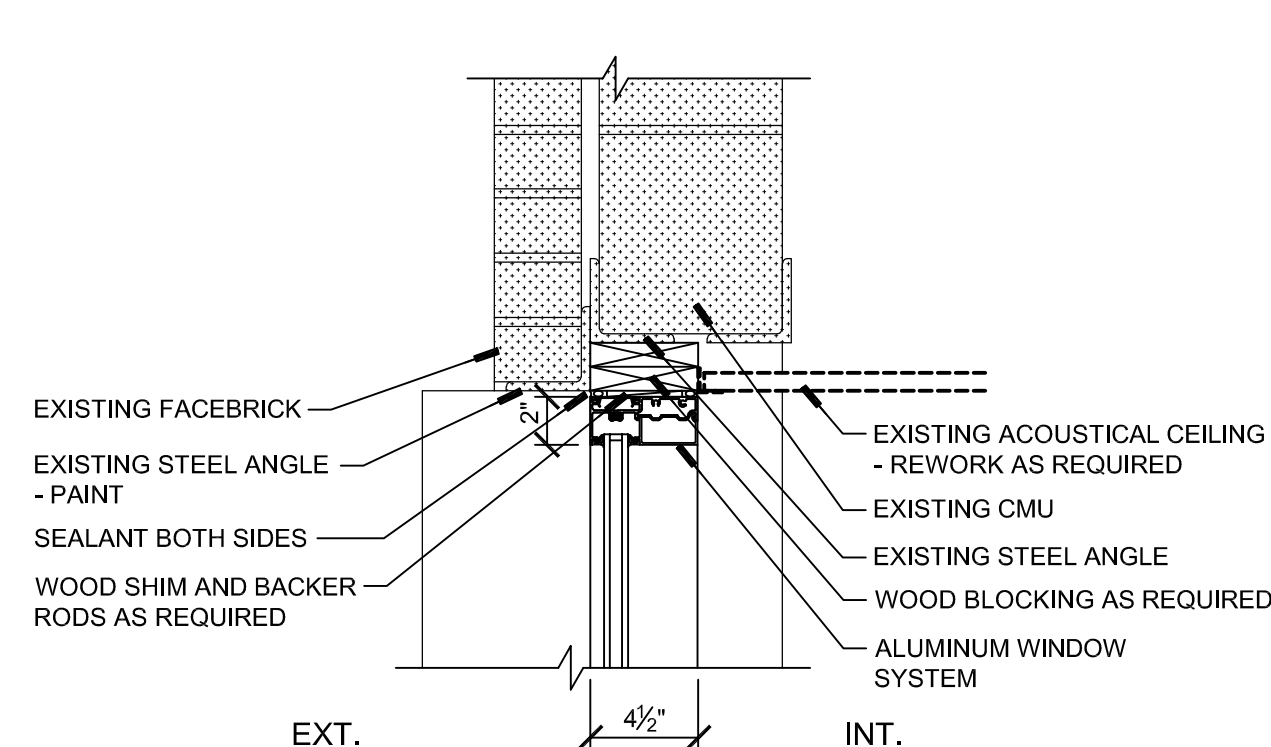
DOOR SCHEDULE												
DOOR NO.	DOORS				DOOR TYPE		FRAMES		DOOR GLAZING	HDWR GROUP	LABEL	REMARKS
	SG/PR	WIDTH	HEIGHT	THICK	MTL	ELEV.	MTL	ELEV.				
H101	SG	3'-0"	7'-0"	2"	AL	D1	AL	W8	GL-1	01	NONE	-
H102	SG	3'-0"	7'-0"	2"	AL	D1	AL	W9	GL-1	01	NONE	-



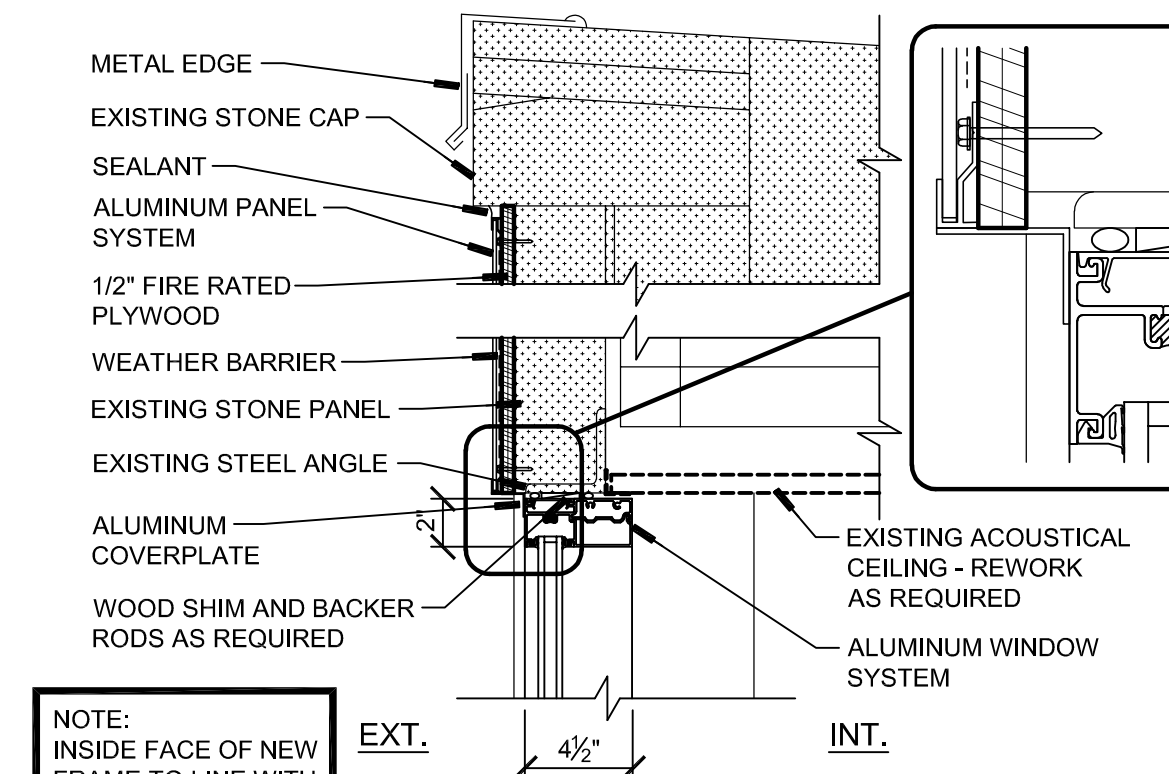
SCALE: 1/4"=1'-0"



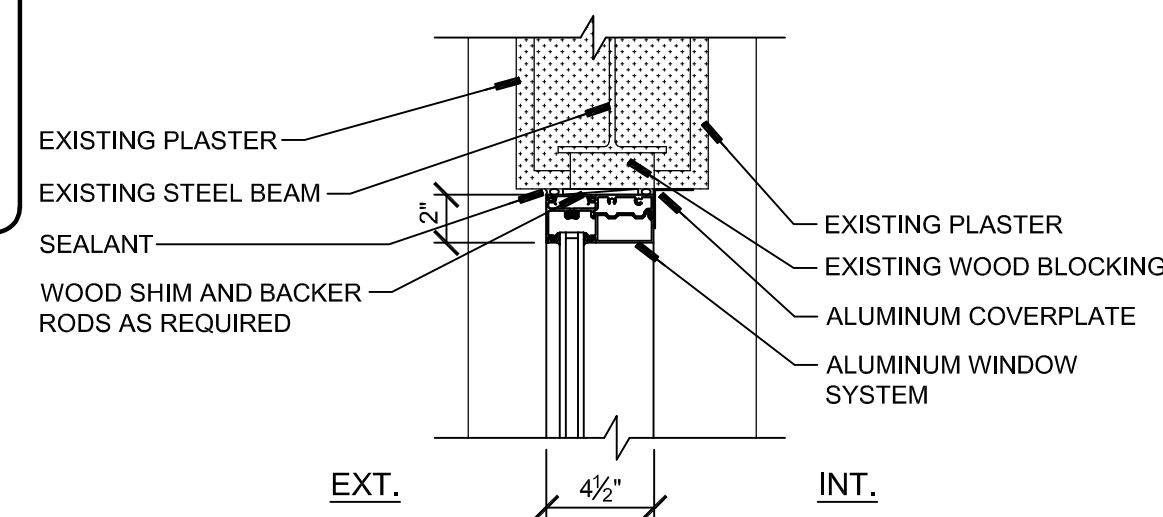
H1 HEAD DETAIL
SCALE: 1-1/2"=1'-0"



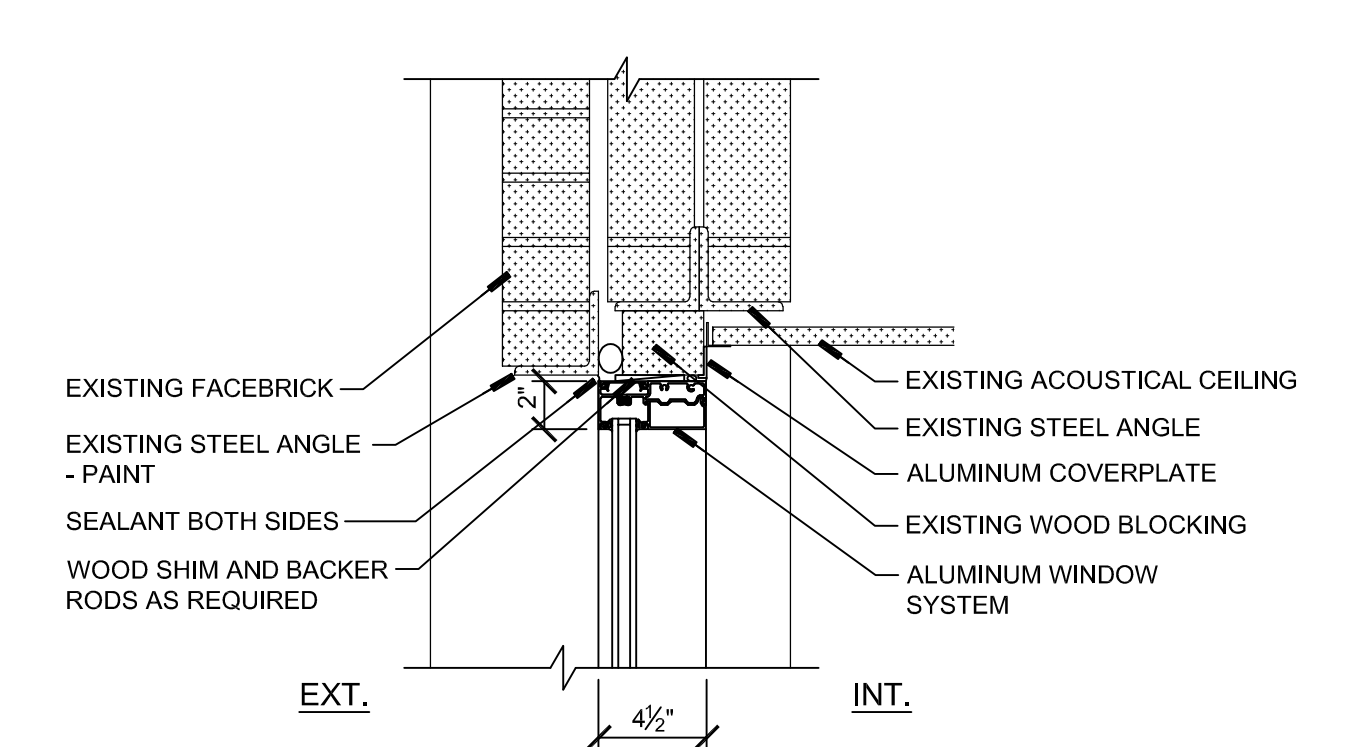
H2 HEAD DETAIL
SCALE: 1-1/2"=1'-0"



H3 HEAD DETAIL
SCALE: 1-1/2"=1'-0"

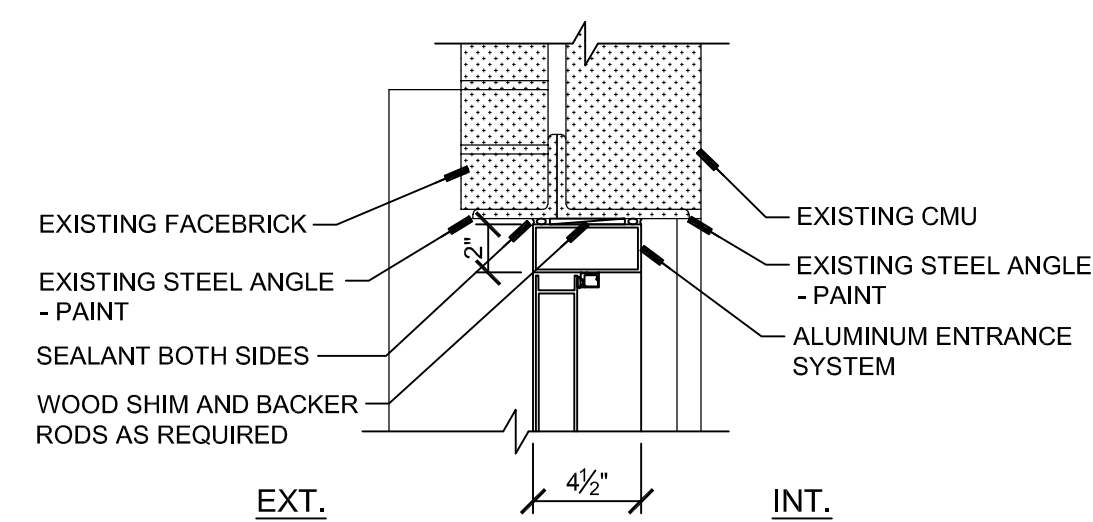


H4 HEAD DETAIL
SCALE: 1-1/2"=1'-0"

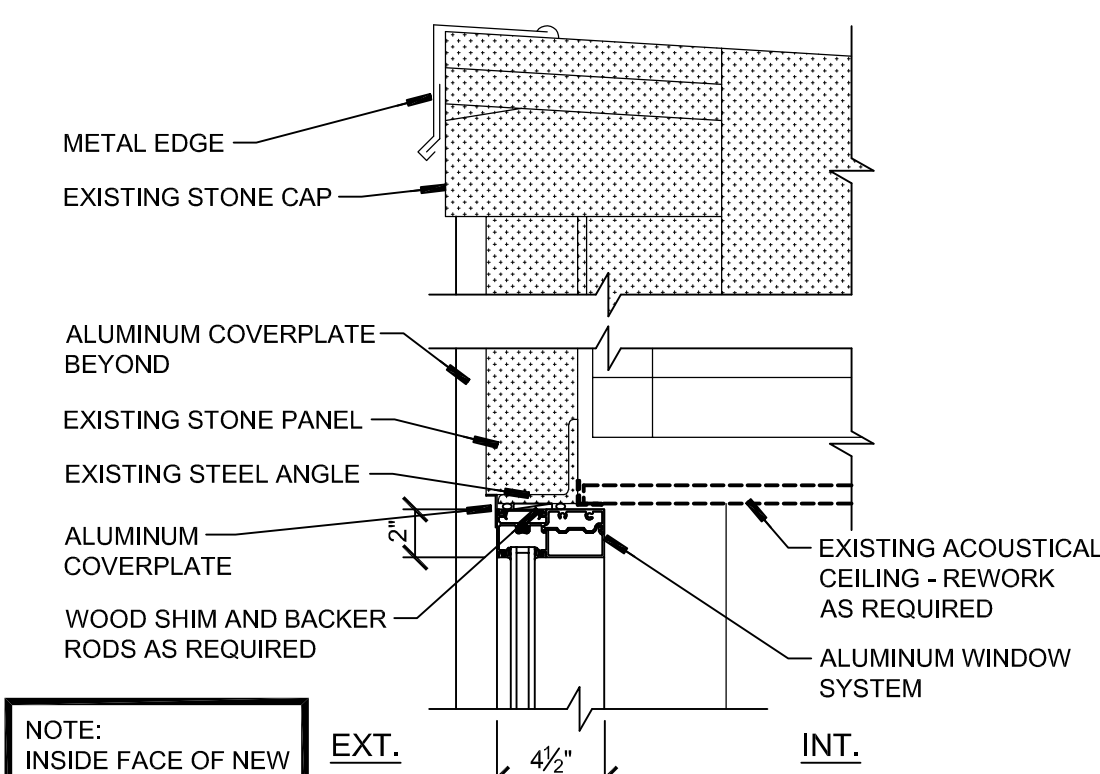


H5 HEAD DETAIL
SCALE: 1-1/2"=1'-0"

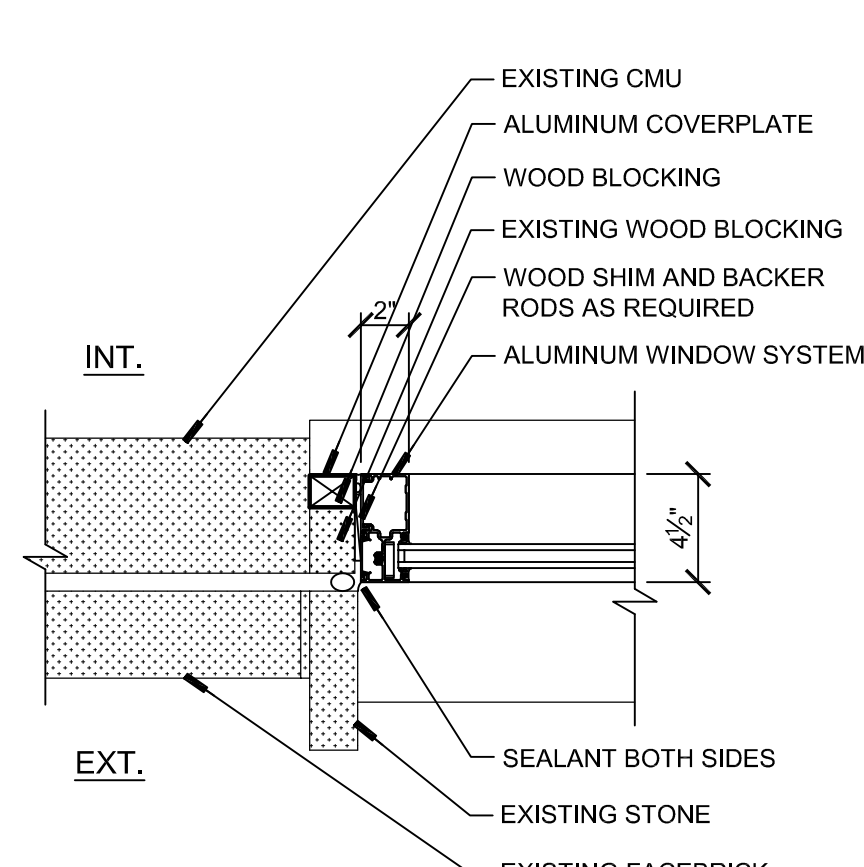
TYPICAL NOTE:
OUTSIDE FACE OF NEW FRAME TO LINE
WITH OUTSIDE FACE OF REMOVED
FRAME UNLESS NOTED OTHERWISE.



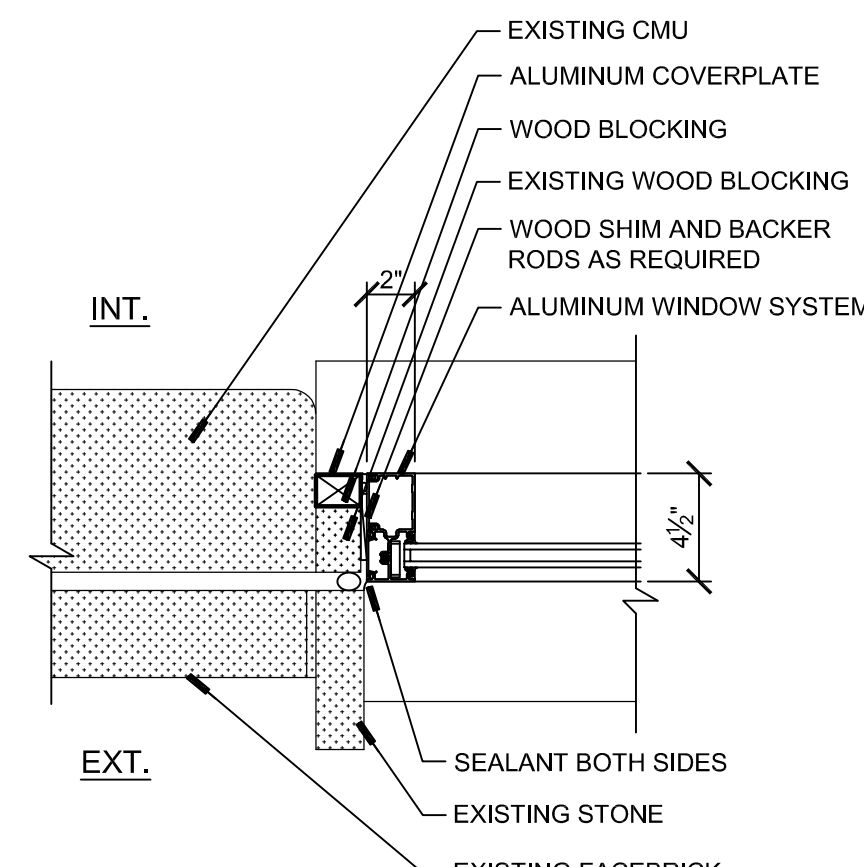
H6 HEAD DETAIL
SCALE: 1-1/2"=1'-0"



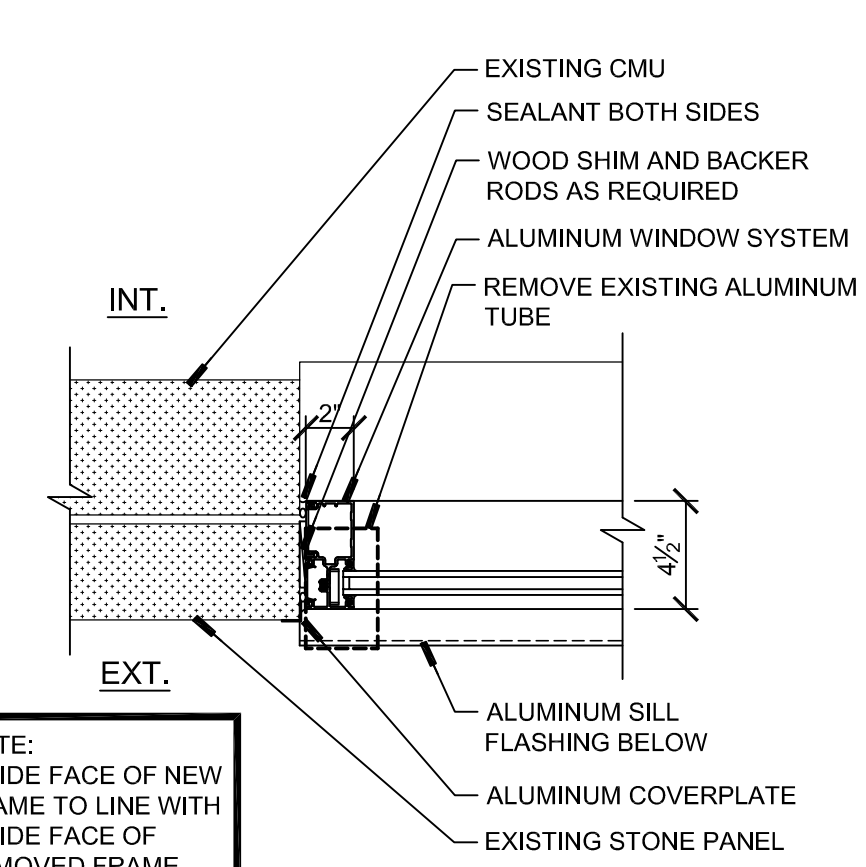
H7 HEAD DETAIL
SCALE: 1-1/2"=1'-0"



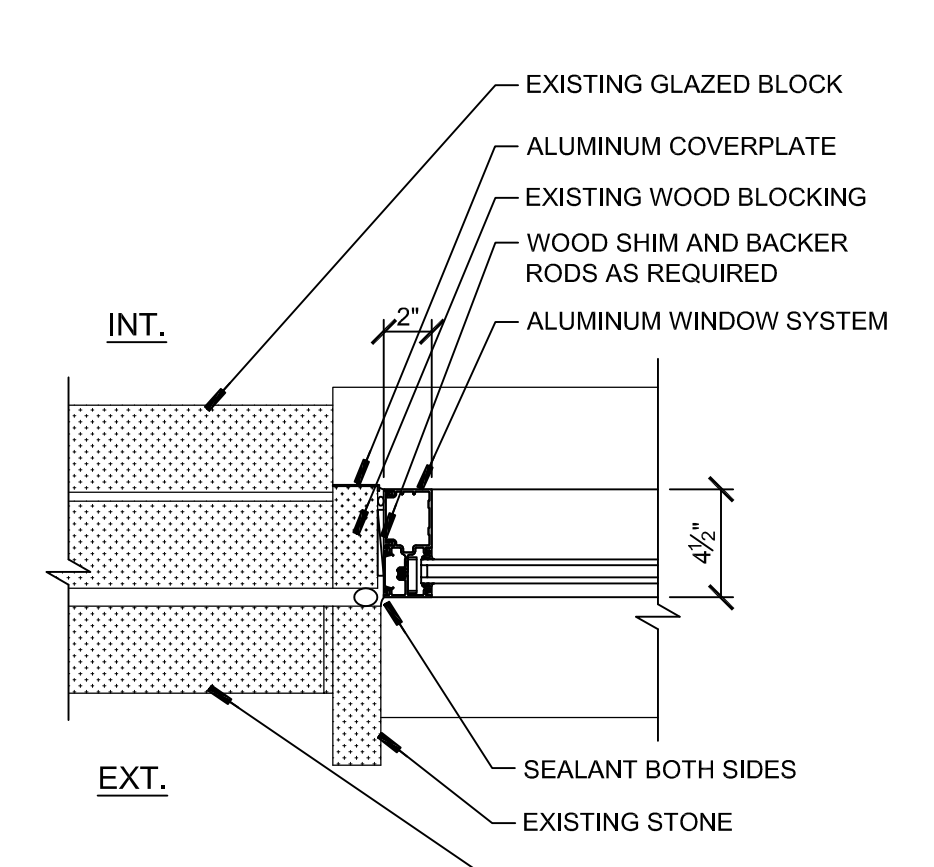
J1 JAMB DETAIL
SCALE: 1-1/2"=1'-0"



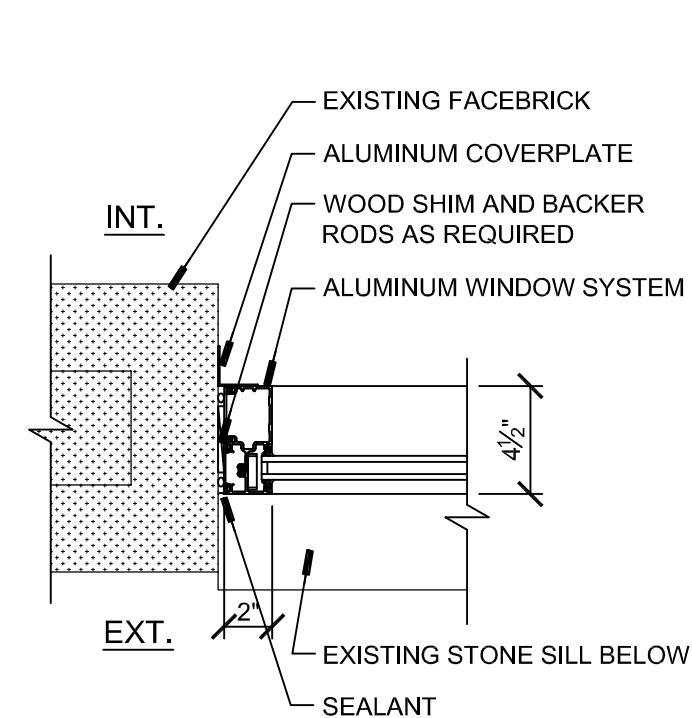
J2 JAMB DETAIL
SCALE: 1-1/2"=1'-0"



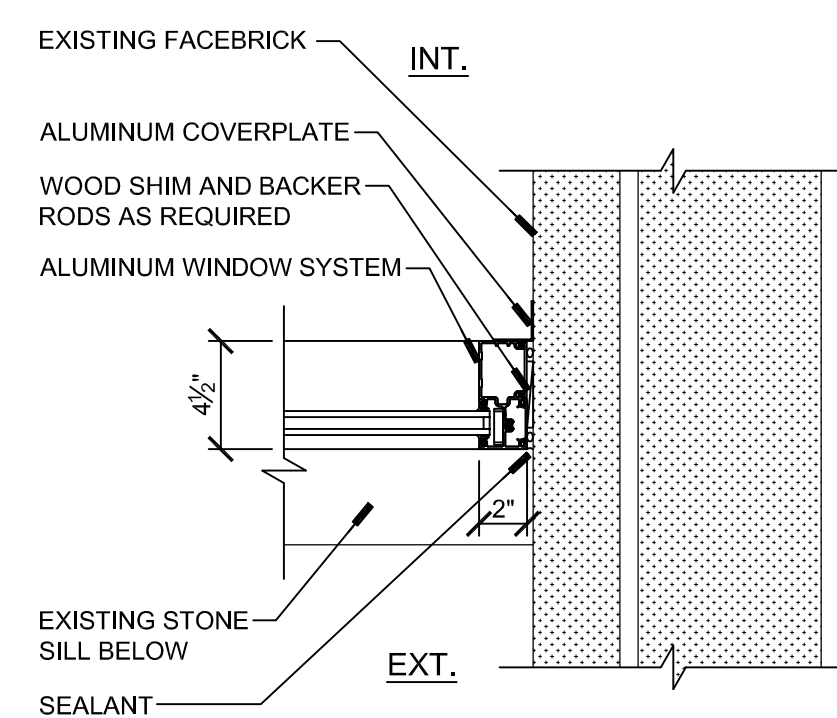
J3 **JAMB DETAIL**
SCALE: 1-1/2"=1'-0"



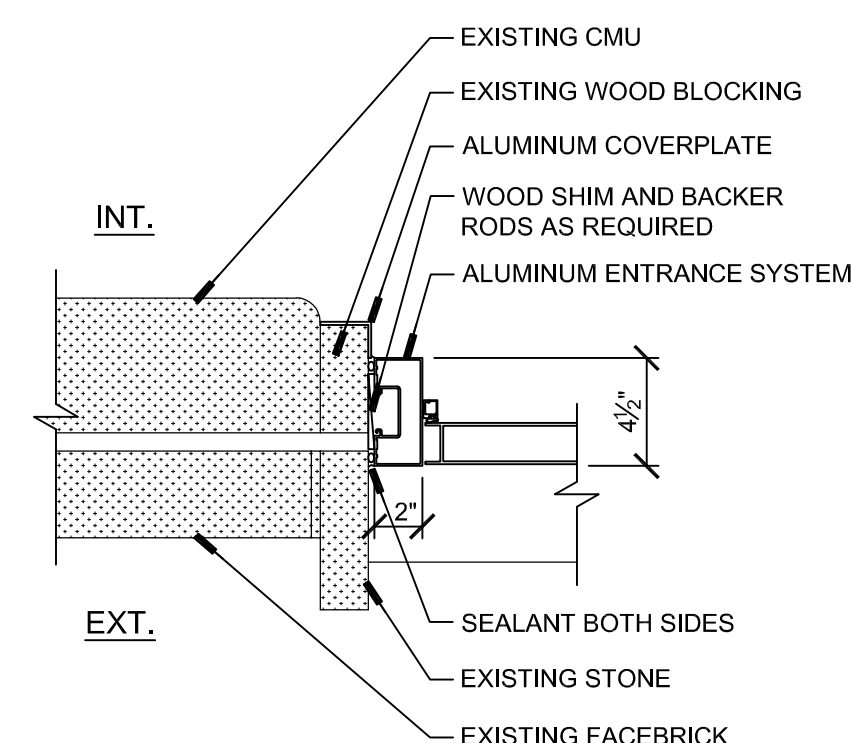
J4 JAMB DETAIL
SCALE: 1-1/2"=1'-0"



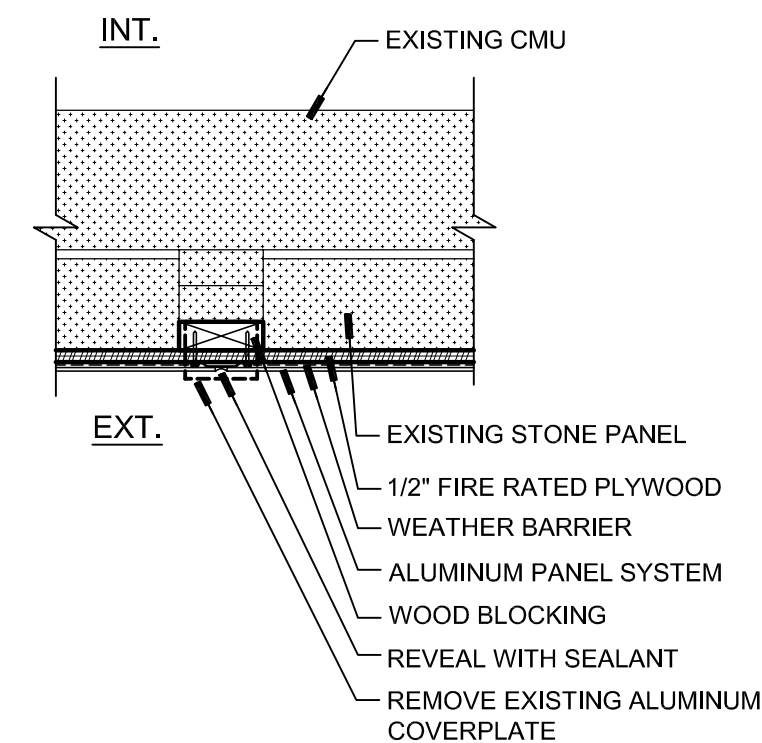
J5 **JAMB DETAIL**
SCALE: 1-1/2"=1'-0"



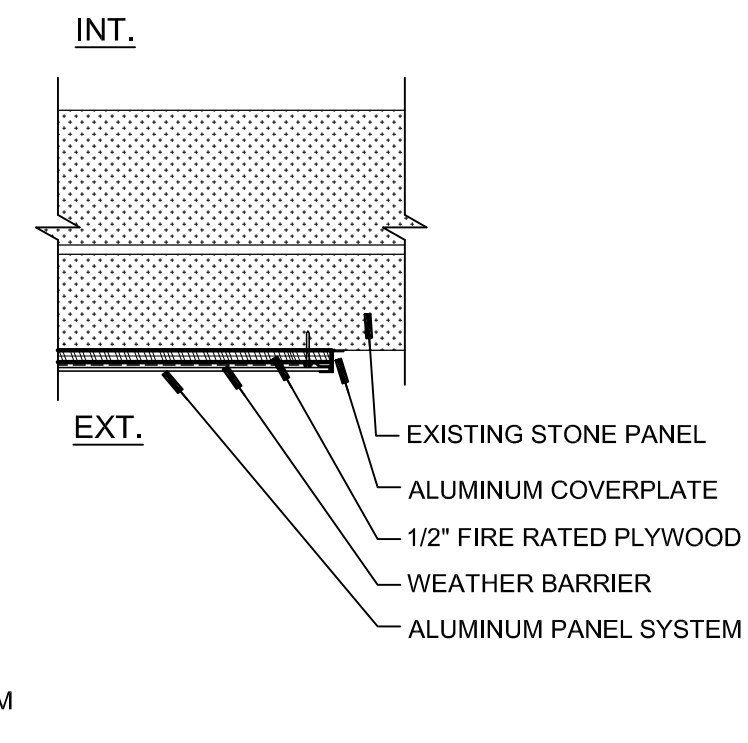
J6 JAMB DETAIL
SCALE: 1-1/2"=1'-0"



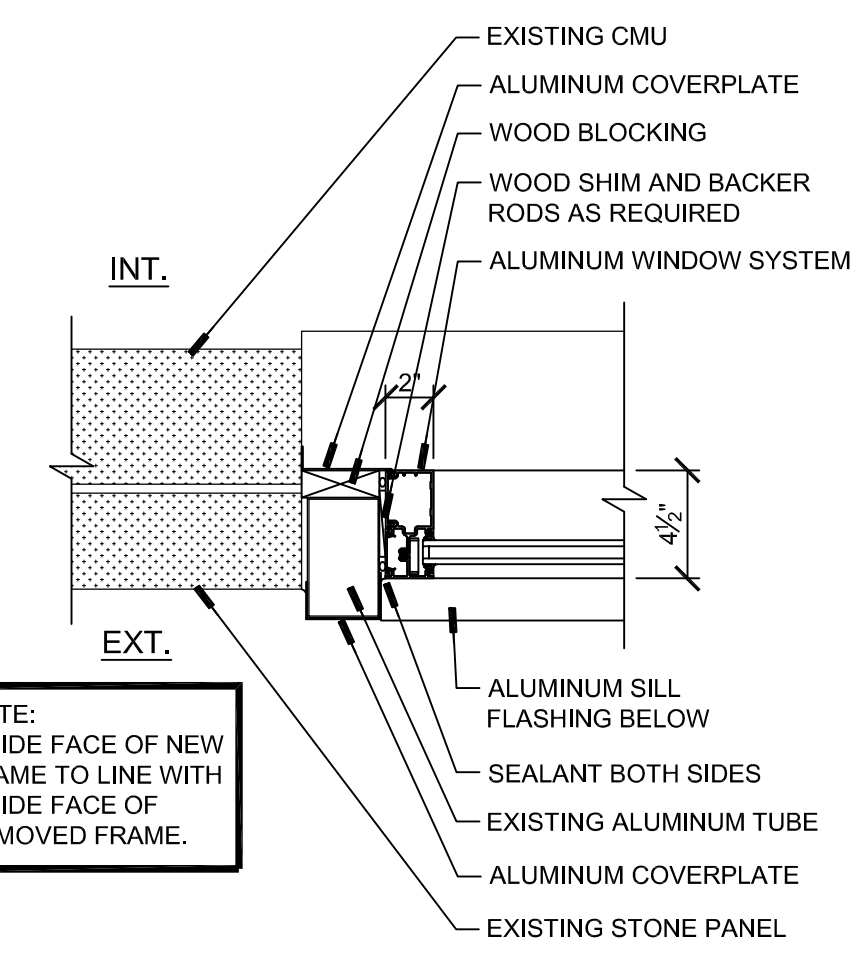
J7 **JAMB DETAIL**
SCALE: 1-1/2"=1'-0"



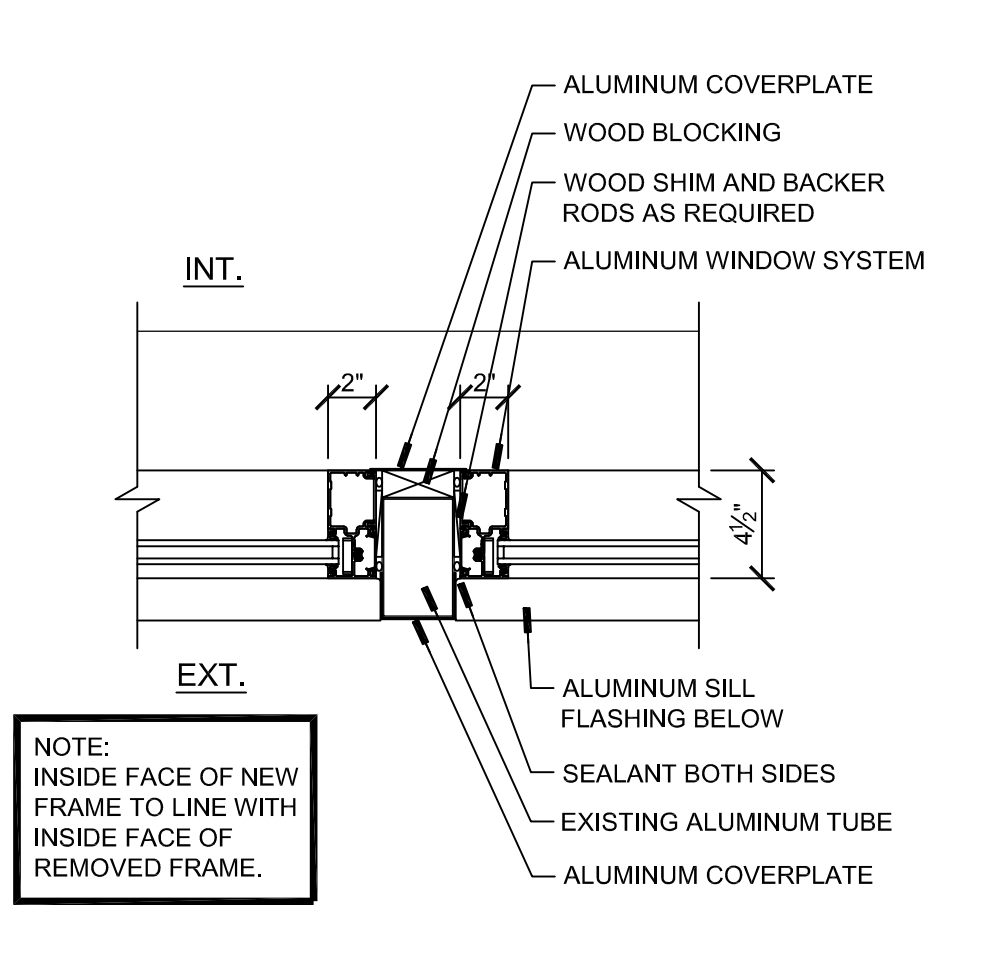
J8 JAMB DETAIL
SCALE: 1-1/2"=1'-0"



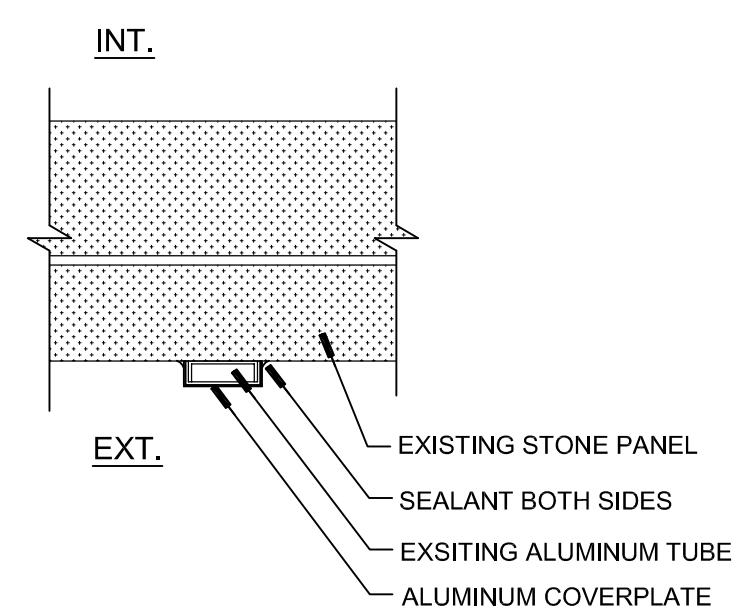
J9 **JAMB DETAIL**
SCALE: 1-1/2"=1'-0"



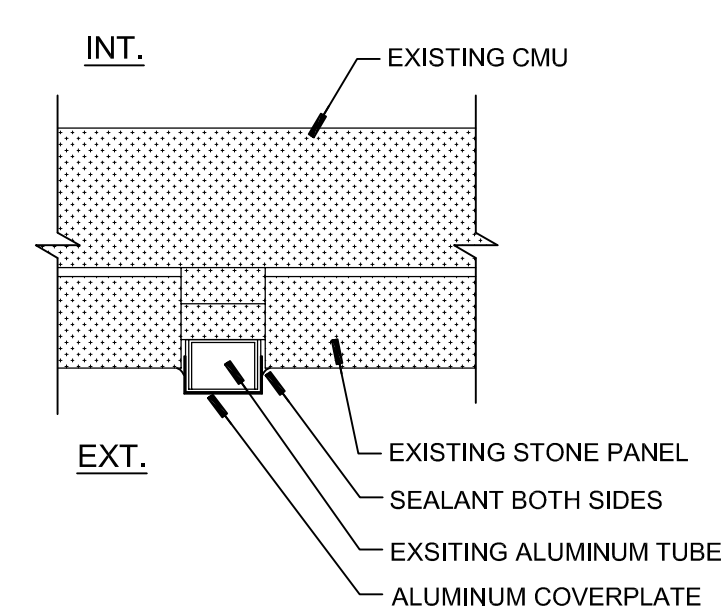
J10 **JAMB DETAIL**
SCALE: 1-1/2"=1'-0"



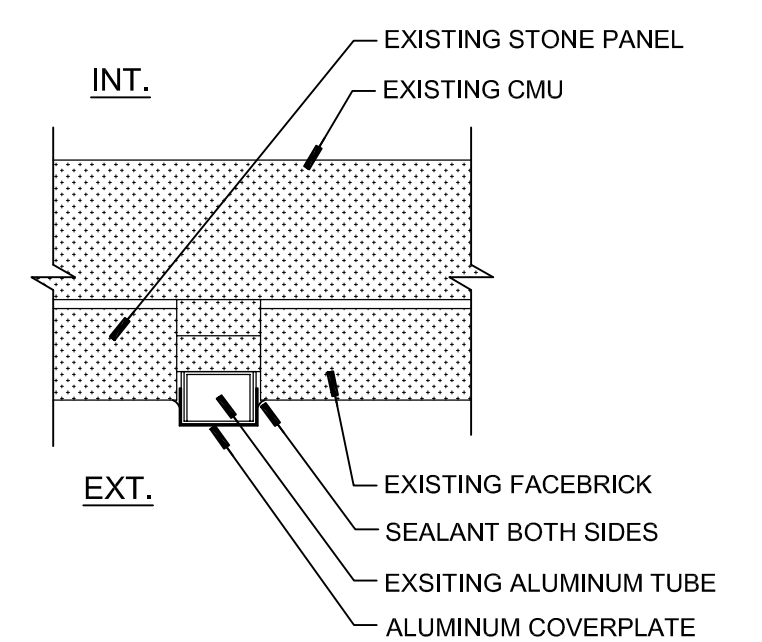
J11 **JAMB DETAIL**
SCALE: 1-1/2"=1'-0"



J12 **JAMB DETAIL**
SCALE: 1-1/2"=1'-0"



J13 **JAMB DETAIL**
SCALE: 1-1/2"=1'-0"



J14 **JAMB DETAIL**
SCALE: 1-1/2"=1'-0"



NOTE:
INSIDE FACE OF NEW
FRAME TO LINE WITH
INSIDE FACE OF
REMOVED FRAME.



NOTE:
INSIDE FACE OF NEW
FRAME TO LINE WITH
INSIDE FACE OF
REMOVED FRAME.



PRE-BID MEETING SIGN-IN SHEET

IFB 19-13 Asbestos Abatement Project at Froberg & Hillman Elementary Schools

PLEASE WRITE EMAIL ADDRESS SO THAT IT IS LEGIBLE IN ORDER TO RECEIVE ADDENDUM INFORMATION

	Printed Name	Company Name	Company Address	Telephone	E-mail
1	John Curtis	Brock Industrial	2210 OAK LEAF ST. JOLIET	708 822 0139	John.Curtis@Brockgroup.com
2	Tim Ball	Colfax	2441 Leavitts. CHI IL	489-4170 (857)	tholl@colfaxcorp.net
3	Bill Rabellier	Hollan	7504 meyer rd Spring Grove	675 6653	Tim@HollanInd.com
4	Guido Giornido	Abel Plus Services	64 West End Dr. Gilbert IL 60134	847 346 5139	guido@abelplusservices.com
5	Kenn Montgomery	Valor Technologies	3 Northpoint Ct Bellingham WA	708-724-2839	Kevin.V@valortechnologies.com
6	DAVID GRABOWSKI	HUSAR ABATEMENT	1015 FRANKLIN AVE FRANKLIN PARK IL 60131	708 983 4271	TOMASZ.H@HUSARIL.COM
7					
8					



PRE-BID MEETING SIGN-IN SHEET

IFB 19-13 Asbestos Abatement Project at Froberg & Hillman Elementary Schools

PLEASE WRITE EMAIL ADDRESS SO THAT IT IS LEGIBLE IN ORDER TO RECEIVE ADDENDUM INFORMATION

Printed Name	Company Name	Company Address	Telephone	E-mail
1 John Curtis	Brock Industries	Joliet, IL 2210 OAK LEAF ST, 60436	0139 708 822	brockgroup.com JohnCurtis@
2 DAVID GRABOWSKI	ASBESTOS ABATEMENT	10215 FRANKLIN AVE FRANKLIN PARK, IL, 60131	708 933 4271	TOMAX-4411@rockford.il.us
3 Bill Rabelhofer	Holian	7504 Meyer Rd Spring Grove, IL	815 675 6683	TIM@HOLIAN.IL.COM
4 Guido Gorniak	Abel Plus Services	64 W End Pl Gilberts, IL	817 346 5139	guido.abelplusservices.com
5 Kevin Montgomery	Valor Technologies	3 Northpoint Ct - Bolingbrook	708 724 2839	Kevin.Vale@valortechnologies.com
6 Tim Boll	Colfax	2441 N. Lincoln St Chgo, IL	773 489 4176	tboll@colfaxcorp.com
7				
8				