

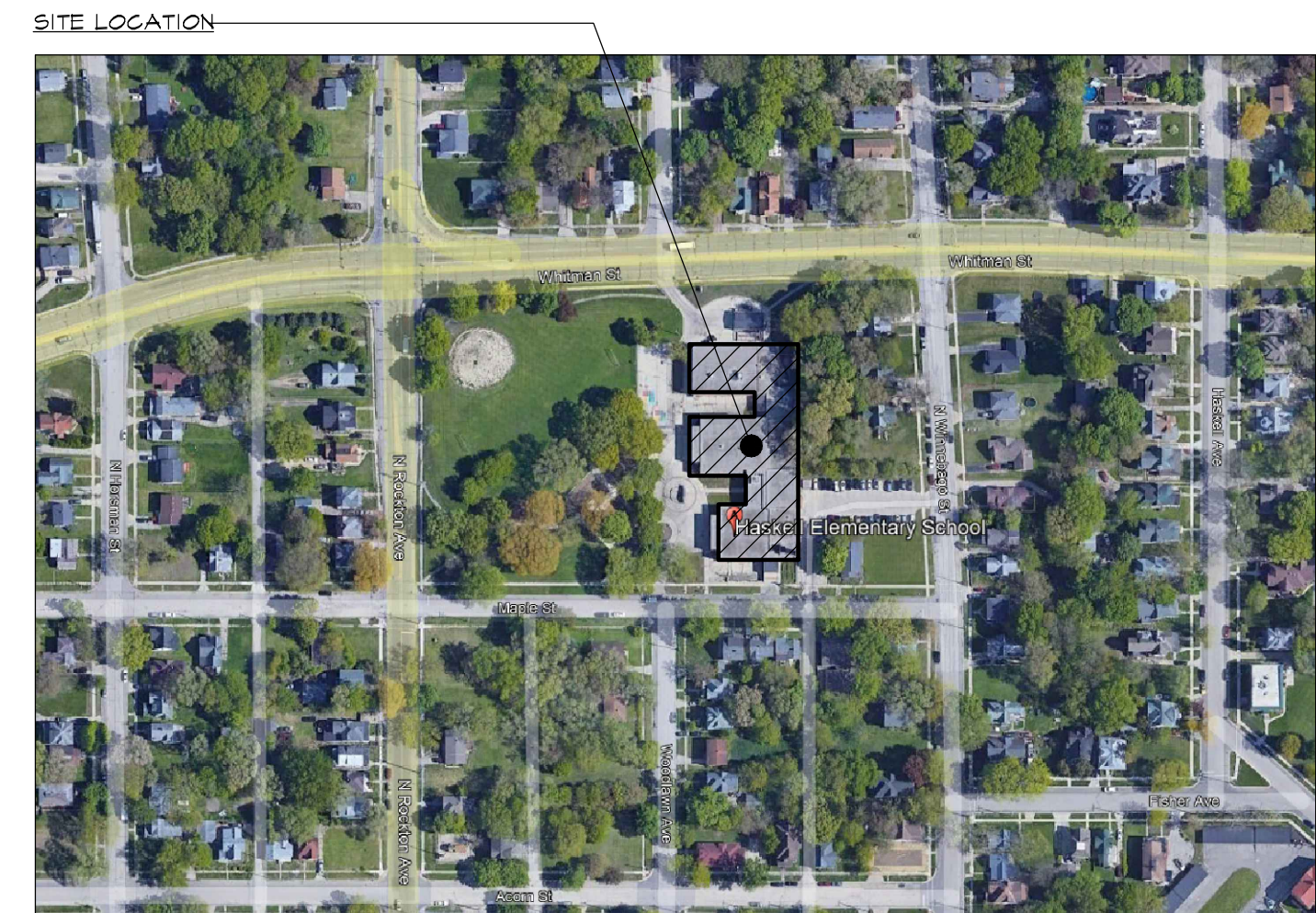
IFB 23-22 HASKELL AND KENNEDY SCHOOLS DOOR REPLACEMENT



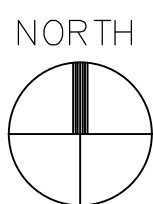
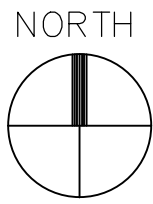
HASKELL ELEMENTARY:

LOCATION: ROCKFORD PUBLIC SCHOOL DISTRICT #205
515 MAPLE ST.
ROCKFORD, IL 61103

ARCHITECT: 1919 ARCHITECTS
4000 MORSAY DRIVE
ROCKFORD, IL 61107



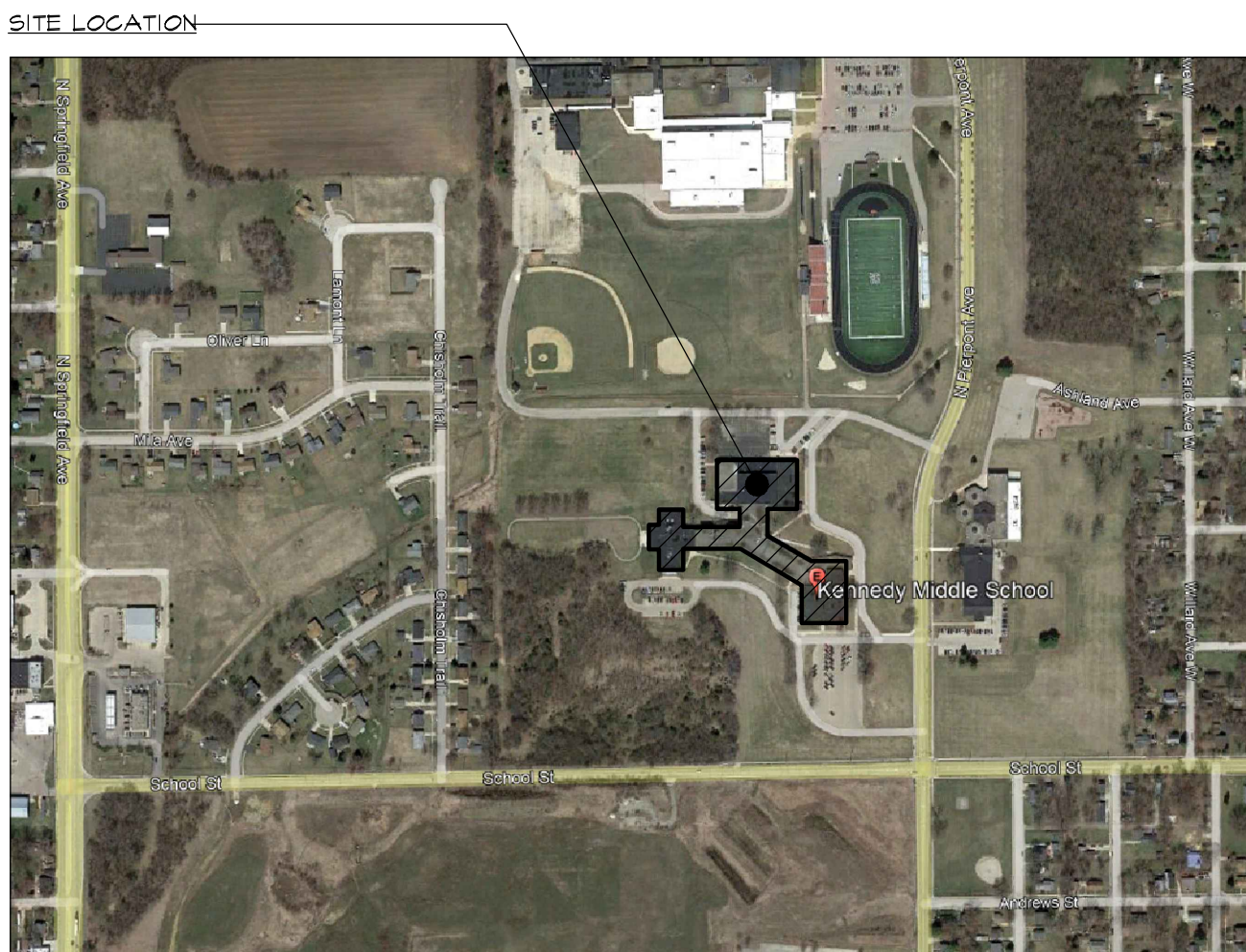
1
6-1.0
HASKELL ELEMENTARY SITE PLAN
SCALE: NTS
RPS #2235



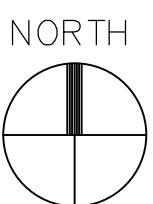
KENNEDY MIDDLE SCHOOL:

LOCATION: ROCKFORD PUBLIC SCHOOL DISTRICT #205
520 N. PIERPONT AVE.
ROCKFORD, IL 61101

ARCHITECT: 1919 ARCHITECTS
4000 MORSAY DRIVE
ROCKFORD, IL 61107



2
6-1.0
KENNEDY ELEMENTARY SITE PLAN
SCALE: NTS
RPS #2236



THESE DOCUMENTS ARE COPYRIGHTED. REPRODUCTION OF THIS DRAWING, BY ANY PHOTOGRAPHIC, XEROGRAPHIC, OR OTHER SIMILAR TECHNIQUE OR PROCESS, DURING THE BIDDING PERIOD OR FOR INCORPORATING THE MATERIAL CONTAINED HEREON INTO A SHOP DRAWING, IS STRICTLY PROHIBITED WITHOUT THE EXPRESSED CONSENT OF 1919 ARCHITECTS P.C.
© 2019 1919 ARCHITECTS, P.C.

SHEET INDEX

<u>GENERAL</u>	
G-1.0	<u>COVER SHEET</u>
G-1.1	<u>SPECS</u>
G-1.2	<u>SPECS</u>
<u>SITE</u>	
C-1.0	<u>HASKELL SITE PLAN AND DETAILS</u>
C-2.0	<u>KENNEDY SITE PLAN</u>

STATEMENT OF COMPLIANCE

I have prepared, or caused to be prepared under my direct supervision, the attached plans and specifications and state that, to the best of my knowledge and belief and to the extent of my contractual obligation, they are in compliance with the Environmental Barriers Act (410 ILCS 25 Code, (71 Ill. Adm. Code 400.) and the Illinois Accessibility

Signed: _____
Architect/Engineer
ILLINOIS REGISTRATION NO.: 001-015480
Exp. Date: 11/30/22
PROFESSIONAL DESIGN FIRM NO.: 184.003452

1919 Architects
4000 Morsay Drive
Rockford, IL 61107
(815) 223-8222
www.1919architects.com

HASKELL/KENNEDY DOOR REPLACEMENT	ARCHITECT	OWNER	CONTRACTOR	BIDDING CO.
	1919 ARCHITECTS	ROCKFORD PUBLIC SCHOOL DISTRICT #205	ROCKFORD PUBLIC SCHOOL DISTRICT #205	ROCKFORD PUBLIC SCHOOL DISTRICT #205
515 MAPLE ST. ROCKFORD IL, 61103	520 N. PIERPONT AVE. ROCKFORD IL, 61103	21-13910	09-12-2022	JMK
	Project Number	Date	Rev.	App'd

COVER SHEET	Rev. Date	
	Sheet No.	G-1.0

	<div>SECTION 01 2100 - ALLOWANCES</div> <div>PART 1 - GENERAL</div> <div>1.01 SUMMARY</div> <div>A. Section includes administrative and procedural requirements governing allowances.</div> <div>B. Types of allowances include the following:</div> <div>1. Unit-cost allowances.</div> <div>1.02 SELECTION AND PURCHASE</div> <div>A. At the earliest practical date after award of the Contract, advise Architect of the date when final selection, or purchase and delivery, of each product or system described by an allowance must be completed by the Architect and/or Owner to avoid delaying the Work.</div> <div>B. At Architect's request, obtain proposals for each allowance for use in making final selections. Include recommendations that are relevant to performing the Work.</div> <div>C. Purchase products and systems selected by Architect from the designated supplier.</div> <div>1.03 SUBMITTALS</div> <div>A. Submit proposals for purchase of products or systems included in allowances in the form specified for Change Orders.</div> <div>B. Submit invoices or delivery slips to show actual quantities of materials delivered to the site for use in fulfillment of each allowance.</div> <div>C. Submit time sheets and other documentation to show labor time and cost for installation of allowance items that include installation as part of the allowance sum.</div> <div>D. Coordinate and process submittals for allowance items in same manner as for other portions of the Work.</div> <div>1.04 DELIVERY AND STORAGE</div> <div>A. Arrange for delivery of products purchased under an allowance, from place of delivery to Project site, including any storage required during transport to the site.</div> <div>B. Do not deliver such products until any facilities required for storage are in proper condition.</div> <div>C. Promptly inspect products upon delivery for completeness, damage, and defects. Submit claims for transportation damage.</div> <div>1.05 UNIT-COST ALLOWANCES</div> <div>A. Allowance shall include cost to Contractor of specific products and materials ordered by Owner or selected by Architect under allowance and shall include applicable taxes, freight, and delivery to Project site.</div> <div>B. Unless otherwise indicated, Contractor's costs for receiving and handling at Project site, labor, installation, overhead and profit, and similar costs related to products and materials ordered by Owner or selected by Architect under allowance shall be included as part of the Contract Sum and not part of the allowance.</div> <div>C. Unused Materials: Return unused materials purchased under an allowance to manufacturer or supplier for credit to Owner, after installation has been completed and accepted.</div> <div>1. If requested by Architect, retain and prepare unused material for storage by Owner. Deliver unused material to Owner's storage space as directed.</div> <div>1.06 ADJUSTMENT OF ALLOWANCES</div> <div>A. Allowance Adjustment: To adjust allowance amounts, prepare a Change Order proposal based on the difference between purchase amount and the allowance, multiplied by final measurement of work-in-place where applicable. If applicable, include reasonable allowances for cutting losses, tolerances, mixing wastes, normal product imperfections, and similar margins.</div> <div>1. Include installation costs in purchase amount only where indicated as part of the allowance.</div> <div>2. If requested, prepare explanation and documentation to substantiate distribution of overhead costs and other markups.</div> <div>3. Submit substantiation of a change in scope of Work, if any, claimed in Change Orders related to unit-cost allowances.</div> <div>4. Owner reserves the right to establish the quantity of work-in-place by independent quantity survey, measure, or count.</div> <div>B. Submittal claims for increased costs because of a change in scope or nature of the allowance described in the Contract Documents, whether for the purchase order amount or Contractor's handling, labor, installation, overhead, and profit,</div> <div>1. Do not include Contractor's or subcontractor's indirect expense in the Change Order cost amount unless it is clearly shown that the nature or extent of Work has changed from what could have been foreseen from information in the Contract Documents.</div> <div>2. No charge to Contractor's indirect expense is permitted for selection of higher- or lower-priced materials or systems of the same scope and nature as originally indicated.</div> <div>1.07 SCHEDULE OF ALLOWANCES</div> <div>A. Allowance No. 1: Unit-Cost Allowance: Include the sum of \$1,000.00 per thousand for brick."</div> <div>END OF SECTION 012100</div>	<div>Section 08 4213 - ALUMINUM-FRAMED ENTRANCE</div> <div>PART 1 - GENERAL</div> <div>1.01 SUMMARY</div> <div>A. Section Features:</div> <div>1. Exterior manual-swing entrance doors and door-frame units.</div> <div>2. Factory-installed hardware for entrances.</div> <div>B. Related Requirements:</div> <div>1. Section 08 1000 "Rough Carpentry" for framing to support aluminum entrances.</div> <div>2. Section 08 7100 "Door Hardware" for hardware items not specified in this Section.</div> <div>3. Section 08 8000 "Glazing" for glass in entrance assemblies.</div> <div>1.02 SUBMITTALS</div> <div>A. Product Data: For each type of product.</div> <div>1. Include construction details, material descriptions, dimensions of individual components and profiles, and finishes.</div> <div>B. Shop Drawings: For aluminum-framed entrances. Include plans, elevations, sections, full-size details, and attachments to other work.</div> <div>1. Include details of provisions for assembly expansion and contraction and for draining moisture occurring within the assembly to the exterior.</div> <div>2. Show connection to and continuity with adjacent thermal, weather, air, and vapor barriers.</div> <div>1.03 QUALITY ASSURANCE</div> <div>A. Installer Qualifications: An entity that employs installers and supervisors who are trained and approved by manufacturer.</div> <div>PART 2 - *Not Typical*/PRODUCTS</div> <div>2.01 ENTRANCE DOOR SYSTEMS</div> <div>A. Entrance Doors: Manufacturer's standard glazed entrance doors for manual-swing operation.</div> <div>1. Door Construction: 1-3/4-inch overall thickness, with minimum 0.125-inch-thick, extruded-aluminum tubular rail and stile members. Mechanically fasten corners with reinforcing brackets that are deeply penetrated and fillet welded or that incorporate concealed tie rods.</div> <div>2. Door Design: As indicated.</div> <div>3. Glazing Stops and Gaskets: Snap-on; extruded-aluminum stops and preformed gaskets.</div> <div>a. Provide nonremovable glazing stops on outside of door.</div> <div>A. Framing Members: Manufacturer's standard extruded aluminum, minimum 0.125 inch thick and reinforced as required to support imposed loads.</div> <div>1. Nominal Size: 1-3/4 by 4-1/2 inches except as indicated otherwise on Drawings.</div> <div>C. Backer Plates: Manufacturer's standard, continuous backer plates for framing members, if not integral, where framing abuts adjacent construction.</div> <div>2.02 ENTRANCE DOOR HARDWARE</div> <div>A. Preparation: Prepare doors for hardware items specified in Section 08 7100 "Door Hardware."</div> <div>B. Pulls: Manufacturer's standard ADA-compliant tubular offset D pull, finished to match door.</div> <div>C. Butt Hinges: BHMA A156.1, Grade 1, radius corner.</div> <div>1. Nonremovable Pins: Provide set screw in hinge barrel that, when tightened into a groove in hinge pin, prevents removal of pin while entrance door is closed.</div> <div>2. Exterior Hinges: Stainless steel, with stainless-steel pin.</div> <div>3. Quantities: Provide three hinges per leaf.</div> <div>D. Weather Stripping: Manufacturer's standard replaceable components.</div> <div>1. Compression Type: Made of ASTM D 2000, molded neoprene, or ASTM D 2287, molded PVC.</div> <div>2. Sliding Type: AAMA 701/702, made of wool, polypropylene, or nylon woven pile with nylon-fabric or aluminum-strip backing.</div> <div>E. Other Hardware Items: As specified in Section 08 7100 "Door Hardware."</div> <div>2.03 GLAZING</div> <div>A. Glazing: Comply with Section 08 8000 "Glazing."</div> <div>B. Glazing Gaskets: Manufacturer's standard sealed-corner pressure-glazing system of black, resilient elastomeric glazing gaskets, setting blocks, and shims or spacers.</div> <div>C. Glazing Sealants: As recommended by manufacturer.</div> <div>2.04 ACCESSORIES</div> <div>A. Fasteners and Accessories: Manufacturer's standard corrosion-resistant, nonstaining, nonbleeding fasteners and accessories compatible with adjacent materials.</div> <div>1. Use self-lubric devices where fasteners are subject to loosening or turning out from thermal and structural movements, wind loads, or vibration.</div> <div>2. Reinforce members as required to receive fastener threads.</div> <div>2.05 FABRICATION</div> <div>A. Form or extrude aluminum shapes before finishing.</div> <div>B. Weld in concealed locations to greatest extent possible to minimize distortion or discoloration of finish. Remove weld spatter and welding oxides from exposed surfaces by descaling or grinding.</div> <div>C. Fabricate components that, when assembled, have the following characteristics:</div> <div>1. Profiles that are sharp, straight, and free of defects or deformations.</div> <div>2. Accurately fitted joints with ends coped or mitered.</div> <div>3. Physical and thermal isolation of glazing from framing members.</div> <div>4. Fasteners, anchors, and connection devices that are concealed from view to greatest extent possible.</div> <div>D. Entrance Door Frames: Reinforce as required to support loads imposed by door operation and for installing entrance door hardware.</div> <div>E. Entrance Doors: Reinforce doors as required for installing entrance door hardware.</div> <div>F. Entrance Door Hardware Installation: Factory install entrance door hardware to the greatest extent possible. Cut, drill, and tap for factory-installed entrance door hardware before applying finishes.</div> <div>G. After fabrication, clearly mark components to identify their locations in Project according to Shop Drawings.</div> <div>2.06 ALUMINUM FINISHES</div> <div>A. Clear Anodic Finish: AAMA 611, or thicker.</div> <div>B. Color Anodic Finish: AAMA 611, or thicker.</div> <div>1. Color: .</div> <div>2. Color: .</div> <div>C. Baked-Enamel or Powder-Coat Finish: AAMA 2603 except with a minimum dry film thickness of 1.5 mils. Comply with coating manufacturer's written instructions for cleaning, conversion coating, and applying and baking finish.</div> <div>1. Color and Gloss:</div> <div>D. High-Performance Organic Finish: Two-coat fluoropolymer finish complying with _____ and containing not less than _____ percent resin by weight in color coat. Prepare, pretreat, and apply coating to exposed metal surfaces to comply with coating and resin manufacturers' written instructions.</div> <div>1. Color and Gloss:</div> <div>E. High-Performance Organic Finish: -coat fluoropolymer finish complying with AAMA 2605 and containing not less than _____ percent resin by weight in both color coat and clear topcoat. Prepare, pretreat, and apply coating to exposed metal surfaces to comply with coating and resin manufacturers' written instructions.</div> <div>1. Color and Gloss:</div> <div>PART 3 - EXECUTION</div> <div>3.01 EXAMINATION</div> <div>A. Examine areas, with Installer present, for compliance with requirements for installation tolerances and other conditions affecting performance of the Work.</div> <div>B. Proceed with installation only after unsatisfactory conditions have been corrected.</div> <div>3.02 INSTALLATION</div> <div>A. General:</div> <div>1. Comply with manufacturer's written instructions.</div> <div>2. Do not install damaged components.</div> <div>3. Fit joints to produce hairline joints free of burrs and distortion.</div> <div>4. Rigidly secure nonmovement joints.</div> <div>5. Install anchors with separators and isolators to prevent metal corrosion and electrolytic deterioration and to prevent impeding movement of moving joints.</div> <div>6. Seal perimeter and other joints watertight unless otherwise indicated.</div> <div>B. Metal Protection:</div> <div>1. Where aluminum is in contact with dissimilar metals, protect against galvanic action by painting contact surfaces with materials recommended by manufacturer for this purpose or installing nonconductive spacers.</div> <div>2. Where aluminum is in contact with concrete or masonry, protect against corrosion by painting contact surfaces with bituminous paint.</div> <div>C. Set continuous sill members and flashing in full sealant bed as specified in Section 07 9200 "Joint Sealants" to produce weathertight installation.</div> <div>D. Install components plumb and true in alignment with established lines and grades.</div> <div>E. Install glazing as specified in Section 08 8000 "Glazing."</div> <div>F. Entrance Doors: Install doors to produce smooth operation and tight fit at contact points.</div> <div>1. Exterior Doors: Install to produce weathertight enclosure and tight fit at weather stripping.</div> <div>2. Field-Installed Entrance Door Hardware: Install surface-mounted entrance door hardware according to entrance door hardware manufacturers' written instructions using concealed fasteners to greatest extent possible.</div> <div>3.03 *Not Typical*/FIELD QUALITY CONTROL</div> <div>A. Testing Agency: a qualified testing agency to perform tests and inspections.</div> <div>B. Field Quality-Control Testing: Perform the following test on aluminum-framed entrances.</div> <div>3. Water-Spray Test: Before installation of interior finishes has begun, areas designated by Architect shall be tested according to AAMA 501.2 and shall not evidence water penetration.</div> <div>C. Aluminum-framed entrances will be considered defective if they do not pass tests and inspections.</div> <div>D. Prepare test and inspection reports.</div> <div>END OF SECTION</div>	<div>Section 08 88 00 - GLAZING</div> <div>PART 1 - GENERAL</div> <div>1.1 RELATED DOCUMENTS</div> <div>A. Drawings and general provisions of the Contract, including General and Supplementary Conditions and Division 01 Specification Sections, apply to this Section.</div> <div>1.2 SUMMARY</div> <div>A. Section Includes:</div> <div>1. Glass for windows, doors, storefront framing, glazed curtain walls, and sloped glazing.</div> <div>2. Glazing sealsants and accessories.</div> <div>B. Related Requirements:</div> <div>1. Section 057300 "Decorative Metal Railings" for glazing in railings.</div> <div>2. Section 08411 "Aluminum-Framed Entrance and Storefront"</div> <div>3. Section 084413 "Glazed Aluminum Curtain Walls"</div> <div>1.3 DEFINITIONS</div> <div>A. Glass Manufacturers: Firms that produce primary glass, fabricated glass, or both, as defined in referenced glazing publications.</div> <div>B. Glass Thicknesses: Indicated by thickness designations in millimeters according to ASTM C1036.</div> <div>C. IBC: International Building Code.</div> <div>D. Interspace: Space between lites of an insulating-glass unit.</div> <div>1.4 COORDINATION</div> <div>A. Coordinate glazing channel dimensions to provide necessary bite on glass, minimum edge and face clearances, and adequate sealant thicknesses, with reasonable tolerances.</div> <div>1.5 ACTION SUBMITTALS</div> <div>A. Product Data: For each type of product.</div> <div>B. Glass Samples: For each type of the following products; 12 inches (300 mm) square.</div> <div>1. Tinted glass.</div> <div>2. Insulating glass.</div> <div>C. glazing Schedule: List glass types and thicknesses for each size opening and location. Use same designations indicated on Drawings.</div> <div>D. Delegated-Design Submittal: For glass indicated to comply with performance requirements and design criteria, including analysis data signed and sealed by the qualified professional engineer responsible for their preparation.</div> <div>1.6 INFORMATIONAL SUBMITTALS</div> <div>A. Qualification Data: For Installer and manufacturers of insulating-glass units with sputter-coated, low-E coatings.</div> <div>B. Product Certificates: For glass.</div> <div>C. Product Test Reports: For tinted glass, for tests performed by a qualified testing agency.</div> <div>D. Sample Warranties: For special warranties.</div> <div>1.7 QUALITY ASSURANCE</div> <div>A. Manufacturer Qualifications for Insulating-Glass Units with Sputter-Coated, Low-E Coatings: A qualified insulating-glass manufacturer who is approved by coated-glass manufacturer.</div> <div>B. Installer Qualifications: A qualified installer with five years' experience.</div> <div>1.8 DELIVERY, STORAGE, AND HANDLING</div> <div>A. Protect glazing materials according to manufacturer's written instructions. Prevent damage to glass and glazing materials from condensation, temperature changes, direct exposure to sun, or other causes.</div> <div>B. Comply with insulating-glass manufacturer's written instructions for venting and sealing units to avoid hermetic seal ruptures due to altitude change.</div> <div>1.9 FIELD CONDITIONS</div> <div>A. Environmental Limitations: Do not proceed with glazing when ambient and substrate temperature conditions are outside limits permitted by glazing material manufacturers and when glazing channel substrates are wet from rain, frost, condensation, or other causes.</div> <div>1. Do not install glazing sealants when ambient and substrate temperature conditions are outside limits permitted by sealant manufacturer or are below 40 deg F (4.4 deg C).</div>
--	--	---	---

08 7100
DOOR HARDWARE

SECTION 08 7100 – DOOR HARDWARE

PART 1 GENERAL

1.01 SECTION INCLUDES

A. Work under this section includes furnishing and the installation of finish and security hardware specified herein and noted on drawings for a complete and operational system, including any electrified door hardware components including finish and security hardware and auto operators for entrance doors.

Items include, but are not limited to:

1. Exit Devices

2. Push Plates - Pulls

3. Closers

4. Stops, Wall Bumpers, Overhead Controls

5. Thresholds, Gasketing and Door Bottoms

6. Silencers

7. Miscellaneous Trim and Accessories

8. Electrified Hardware Items, Controls and Power Supplies

B. RELATED SECTIONS:

1. Section 08 41 33 – Aluminum Framed Entrances and Storefronts

1.02 REFERENCES

A. The following references are used in this section.

1. NFPA 80 – Standards for Fire Doors and Windows.

2. NFPA 101 - Code for Safety to Life from Fire in Buildings and Structures

3. Installation Guide for Doors and Hardware, DHI, 1984.

4. ANSI / BHMA A156.18, Materials and Finishes, 2006.

1.03 GENERAL REQUIREMENTS

A. Provide items, articles, materials, operations and methods listed, mentioned or scheduled herein or on drawings, in quantities as required to complete project. Provide hardware that functions properly. Prior to furnishing hardware, advise Architect of items that will not operate properly, are improper for conditions, or will not remain permanently anchored.

1.04 SUBMITTALS

A. Hardware Schedule: Submit electronic copies of hardware schedule in vertical format as illustrated by the Sequence of Format for the Hardware Schedule as published by the Door and Hardware Institute. Schedules which do not comply will be returned for correction before checking.

B. Hardware schedule must clearly indicate architect's hardware group and manufacturer of each item proposed.

C. The schedule must be reviewed prior to submission by a certified Architectural Hardware Consultant (AHC), who must affix his or her seal attesting to the completeness and correctness of the schedule.

1. Check specified hardware for suitability and adaptability to details and surrounding conditions. Indicate unsuitable or incompatible items and proposed substitutions in hardware schedule.

2. Provide listing of manufacturer's template numbers for each item of hardware in hardware schedule.

08710 - 1

08 7100
DOOR HARDWARE

SECTION 08 7100 – DOOR HARDWARE

Where emergency exit devices are required on fire-rated doors (with supplementary marking on doors UL or FM labels including "Fire Door to be Equipped with Fire Exit Hardware") provide UL/WHI or FM label on exit devices indicating "Fire Exit Hardware".

F. Substitutions: All substitution requests are required to be submitted prior to the bid date and complying with the procedures and time frame as outlined in Division 01, General Requirements. Approval of submitted products is at the discretion of the architect and his hardware consultant.

G. At the Project's Completion, the Owner's Representative must accompany the Architect and General Contractor during the Door Hardware and Access Control Items punch list phase of the project close-out, insuring the Owner's Representative is familiar with all applications and systems, as installed. Refer to additional requirements under 3.0 EXECUTION.

H. Pre-Installation Meeting: Prior to door hardware installation, the General Contractor / Construction Manager must request a hardware installation meeting to be held at the project location. This meeting must convene prior to the hardware's installation. The types of hardware this meeting must include are: locksets, exit devices, and door closers. The manufacturer's representatives of the above listed products, in conjunction with the hardware supplier for this project, must conduct the installation training. All hardware installers must be required to attend this meeting to receive certificate of authorized training. This meeting must serve as door openings coordination and review of all shop drawings from related trades prior to the hardware installation. The Hardware Supplier must include any related meeting costs in their proposal.

I. Electrified Hardware and Security Hardware Systems: Prior to ordering the electrified hardware, the General Contractor must request a coordination meeting. This meeting must convene prior to or after the Door Hardware Schedule and the wiring diagrams have been submitted to the General Contractor. All related trades must be represented at this meeting, which must also include the architect, the Owner's representative, the hardware supplier, and the hardware manufacturer's representative as requested. This meeting must serve as a review and coordination of all electrified hardware, wiring, connections, location for power supplies, and remote switches, and door functions. All related trades must make any required changes, and resubmit schedules, diagrams, and any other required data, no later than one (1) week following this meeting.

1.06 DELIVERY, STORAGE AND HANDLING

A. Tag each item or package separately with identification related to final hardware schedule, and include basic installation instructions with each item or package.

B. Packaging of door hardware is the responsibility of the supplier. As material is received by the hardware supplier from various manufacturers, sort and repackage in containers clearly marked with appropriate hardware set numbers to match the set numbers of the approved hardware schedule. Two or more identical sets may be packed in the same container.

C. The door hardware supplier must deliver all individually packaged hardware items in a timely fashion to the place of installation (Shop or Project Site), direct factory shipments are not acceptable unless agreed upon beforehand. Hardware supplier must coordinate delivery times and schedules with the contractor.

D. The General Contractor, door hardware supplier, access control supplier, and installers must count, coordinate, and store all door hardware, and access control items herein, completing counts of all items scheduled and furnished. The contractor must report all shortages (discrepancies with shipping documents) within five (5) working days. The manufacturers' and Owner's representatives will inspect the installation of the door hardware and access control items during that phase of construction. Any deficiencies in installation of all materials included herein must be corrected before installation continues.

E. The General Contractor must provide a secure lock-up for the door hardware and security equipment delivered to the Project, but not yet installed. Control handling and installation of the

08710 - 3

08 7100
DOOR HARDWARE

SECTION 08 7100 – DOOR HARDWARE

I. Provide deadlocking latchbolt feature for exit devices.

J. Provide roller strikes on all rim exit devices.

K. Provide hex-key dogging feature for non-rated exit devices.

2.2 DOOR TRIM

A. Acceptable Manufacturers and Types:

Ives	Trimco	Burns
8190	1191-3	29C

B. Push Bars:

1. Ives type 9100, unless otherwise indicated.

C. Pulls:

1. Ives Series 8190, unless otherwise indicated.

2. Where required, mount back to back with push bars.

2.3 DOOR CLOSERS (EXTERIOR)

A. Acceptable Manufacturers and Types of Exposed Closers:

LCN	Sargent	Corbin
4011/4111	281/281-P10	DC8200 / DC8210 x A3

B. Closers must have fully hydraulic, full rack and pinion action with a high strength cast iron cylinder.

C. Provide non-sized closers, continuously adjustable over the full range of closer sizes, and allow for reduced opening force to meet opening force requirements of ANSI A117.1

D. Hydraulic regulation must be by tamper-proof, non-critical valves. Closers must have separate adjustment for latch speed, swing speed, and back check.

E. Provide closers with solid forged steel main arms (and forearm for parallel arm closers) and where specified to have a cast-in solid stop on the closer shoe ("CUSH"). Parallel arm mounted closers must have "EDA" type arms or, where specified, "CUSH" or "SCUSH" type arms.

F. Surface closers must be certified to exceed ten million full load cycles by a recognized independent testing laboratory.

G. Provide drop plates, brackets, or adapters for arms as required to suit details.

H. Mount closers on room side of corridor doors, inside of exterior doors, and stair side of stairway doors.

I. Provide back-check for closers.

J. Provide hold-open arms where indicated, except on labeled doors.

K. Provide closers for doors as noted in Hardware Groups and, in addition, provide closers for labeled doors whether or not specifically noted in group.

L. Provide closers meeting the requirements of UBC 7-2, 1997 and UL 10C positive pressure tests.

M. Pressure relief valves (PRV's) are not permitted.

2.4 OVERHEAD STOPS

A. Acceptable Manufacturers

Glynn Johnson	Rixson	Sargent
90	9 Series	590 Series
100	1 Series	690 Series

08710 - 5

08 7100
DOOR HARDWARE

SECTION 08 7100 – DOOR HARDWARE

2.9 POWER SUPPLIES

A. Acceptable Manufacturers and Types:

Schlage Electronics	Precision	Securitron
PS800 Series	ELR Series	BPS Series

B. Requirements:

1. Provide power supplies, recommended and approved by the manufacturer of the electrified locking component, for the operation of electrified locks, electrified exit devices, magnetic locks, electric strikes, and other components requiring a power supply.

2. Provide the appropriate quantity of power supplies necessary for the proper operation of the electrified locking component and/or components as recommended by the manufacturer of the electrified locking components with consideration for each electrified component utilizing the power supply, the location of the power supply, and the approved wiring diagrams. Locate the power supplies as directed by the Architect.

3. Provide a power supply that is regulated and filtered 24 VDC, or as required, and UL class 2 listed.

2.10 FASTENERS

A. Including, but not limited to, wood or machine screws, bolts, bolts, nuts, anchors, etc. of proper type, material, and finish required for installation of hardware.

B. Use Phillips head for exposed screws. Do not use aluminum screws to attach hardware.

C. Provide self-tapping (TEC) screws for attachment of sweeps and stop-applied weatherstripping only.

2.11 TYPICAL FINISHES AND MATERIALS

A. Finishes, unless otherwise specified:

1. Continuous Hinges: US28 (BHMA 628) on Aluminum

2. Exit Devices: US26D (BHMA 626) on Brass or Bronze

3. Push Plates, Pulls and Push Bars: US32D (BHMA 630) on Stainless Steel

4. Overhead Stops and Holders: US26D (BHMA 626) on Brass or Bronze

5. Closers: Surface mounted. Sprayed Aluminum Lacquer.

6. Latch Protectors: US32D (BHMA 630) on Stainless Steel

7. Miscellaneous Hardware: US26D (BHMA 626) on Brass or Bronze

PART 3 EXECUTION

3.1 EXAMINATION

A. Examine doors, frames, and related items for conditions that would prevent the proper application of finish hardware. Do not proceed until defects are corrected.

3.2 INSTALLATION

A. Mount hardware units at heights indicated in the following applicable publications, except as specifically indicated or required to comply with governing regulations and, except as otherwise indicated, by the Architect.

1. "Recommended Locations for Builders Hardware for Standard Steel Doors and Frames" by the Door and Hardware Institute.

B. Install each hardware item in compliance with the manufacturer's instructions and recommendations. Where cutting and fitting is required to install hardware into or into surfaces that are later to be painted or finished in another way, coordinate removal, storage, and reinstallation or application of surface protection with finishing work specified in the Division 09 Sections. Do not install surface-mounted items until finishes have been completed on the substrates involved.

08710 - 7

08 7100
DOOR HARDWARE

SECTION 08 7100 – DOOR HARDWARE

3.3 FIELD QUALITY CONTROL

A. After installation has been completed, provide services of qualified hardware consultant to check Project to determine proper application of finish hardware according to schedule. Also check operation and adjustment of hardware items.

B. Adjust door control devices to compensate for final operation of heating and ventilating equipment.

3.4 ADJUSTING AND CLEANING

A. At final completion, hardware must be left clean and free from disfigurement. Make final adjustment to door closers and other items of hardware. Where hardware is found defective repair or replace or otherwise correct as directed.

B. Adjust door closers to meet opening force requirements of Uniform Federal Accessibility Standards.

C. Final Adjustment: Wherever hardware installation is made more than one month prior to acceptance or occupancy of space or area, return to work during week prior to acceptance or occupancy, and make final check and adjustment of hardware items in such space or area. Clean operating items as necessary to restore proper function and finish of hardware and doors.

D. Instruct Owner's personnel in proper adjustment and maintenance of door hardware and hardware finishes.

E. Clean adjacent surfaces soiled by hardware installation.

3.5 PROTECTION

A. Provide for proper protection of items of hardware until Owner accepts Project as complete.

3.6 HARDWARE GROUPS

A. The following schedule of hardware groups must be considered a guide only, and the supplier is cautioned to refer to general conditions, special conditions, and the preamble to this section. It must be the hardware supplier's responsibility to furnish all required hardware.

B. Refer to the door schedule for hardware group required at each door opening.

HARDWARE SET # 01

FOR USE ON DOOR # (S):

HASKELL
DOORS A, C, F

EACH TO HAVE:

QTY	DESCRIPTION	CATALOG NUMBER	FINISH MFR
1 EA	CONTINUOUS HINGE	224HD	CLR IVE
1 EA	CONT. HINGE	224HD EPT	CLR IVE
1 EA	POWER TRANSFER	EPT10 CON	689 VON
1 EA	ELEC PANIC HARDWARE	951	626 VON
1 EA	PANIC HARDWARE	98-EO	626 VON
1 EA	REMOVABLE MULLION	5654	689 VON
1 EA	CLOSER	4111 EDA	689 VON
1 EA	OVERHEAD STOP	90	626 LCN
1 EA	DOOR SWEEP	BY DOOR MFR.	626 GLY
1 EA	THRESHOLD	BY DOOR MFR.	

08710 - 9

08 7100
DOOR HARDWARE

SECTION 08 7100 – DOOR HARDWARE

3.7 FIELD QUALITY CONTROL

A. After installation has been completed, provide services of qualified hardware consultant to check Project to determine proper application of finish hardware according to schedule. Also check operation and adjustment of hardware items.

B. Adjust door control devices to compensate for final operation of heating and ventilating equipment.

3.8 ADJUSTING AND CLEANING

A. At final completion, hardware must be left clean and free from disfigurement. Make final adjustment to door closers and other items of hardware. Where hardware is found defective repair or replace or otherwise correct as directed.

B. Adjust door closers to meet opening force requirements of Uniform Federal Accessibility Standards.

C. Final Adjustment: Wherever hardware installation is made more than one month prior to acceptance or occupancy of space or area, return to work during week prior to acceptance or occupancy, and make final check and adjustment of hardware items in such space or area. Clean operating items as necessary to restore proper function and finish of hardware and doors.

D. Instruct Owner's personnel in proper adjustment and maintenance of door hardware and hardware finishes.

E. Clean adjacent surfaces soiled by hardware installation.

3.9 PROTECTION

A. Provide for proper protection of items of hardware until Owner accepts Project as complete.

3.10 HARDWARE GROUPS

A. The following schedule of hardware groups must be considered a guide only, and the supplier is cautioned to refer to general conditions, special conditions, and the preamble to this section. It must be the hardware supplier's responsibility to furnish all required hardware.

B. Refer to the door schedule for hardware group required at each door opening.

HARDWARE SET # 02

FOR USE ON DOOR # (S):

HASKELL
DOORS D AND U

EACH TO HAVE:

QTY	DESCRIPTION	CATALOG NUMBER	FINISH MFR
1 EA	CONTINUOUS HINGE	224HD	CLR IVE
1 EA	PANIC HARDWARE	98-EO	626 VON
1 EA	RIM CYLINDER	951	626 VON
1 EA	REMOVABLE MULLION	5654	689 VON
1 EA	OH STOP	90	630 GLY
1 EA	SURFACE CLOSER	4111 EDA	689 LCN
1 EA	DOOR SWEEP	BY DOOR MFR.	626 GLY
1 EA	THRESHOLD	BY DOOR MFR.	

08710 - 11

08 7100
DOOR HARDWARE

SECTION 08 7100 – DOOR HARDWARE

3.11 FIELD QUALITY CONTROL

A. After installation has been completed, provide services of qualified hardware consultant to check Project to determine proper application of finish hardware according to schedule. Also check operation and adjustment of hardware items.

B. Adjust door control devices to compensate for final operation of heating and ventilating equipment.

3.12 ADJUSTING AND CLEANING

A. At final completion, hardware must be left clean and free from disfigurement. Make final adjustment to door closers and other items of hardware. Where hardware is found defective repair or replace or otherwise correct as directed.

B. Adjust door closers to meet opening force requirements of Uniform Federal Accessibility Standards.

C. Final Adjustment: Wherever hardware installation is made more than one month prior to acceptance or occupancy of space or area, return to work during week prior to acceptance or occupancy, and make final check and adjustment of hardware items in such space or area. Clean operating items as necessary to restore proper function and finish of hardware and doors.

D. Instruct Owner's personnel in proper adjustment and maintenance of door hardware and hardware finishes.

E. Clean adjacent surfaces soiled by hardware installation.

3.13 PROTECTION

A. Provide for proper protection of items of hardware until Owner accepts Project as complete.

3.14 HARDWARE GROUPS

A. The following schedule of hardware groups must be considered a guide only, and the supplier is cautioned to refer to general conditions, special conditions, and the preamble to this section. It must be the hardware supplier's responsibility to furnish all required hardware.

B. Refer to the door schedule for hardware group required at each door opening.

HARDWARE SET # 03

FOR USE ON DOOR # (S):

HASKELL
DOOR J

EACH TO HAVE:

QTY	DESCRIPTION	CATALOG NUMBER	FINISH MFR
1 EA	CONTINUOUS HINGE	224HD	CLR IVE
1 EA	PANIC HARDWARE	98-EO	626 VON
1 EA	RIM CYLINDER	951	626 VON
1 EA	REMOVABLE MULLION	5654	689 VON
1 EA	OH STOP	90	630 GLY
1 EA	SURFACE CLOSER	4111 EDA	689 LCN
1 EA	DOOR SWEEP	BY DOOR MFR.	626 GLY
1 EA	THRESHOLD	BY DOOR MFR.	

08710 - 13

08 7100
DOOR HARDWARE

SECTION 08 7100 – DOOR HARDWARE

3.15 FIELD QUALITY CONTROL

A. After installation has been completed, provide services of qualified hardware consultant to check Project to determine proper application of finish hardware according to schedule. Also check operation and adjustment of hardware items.

B. Adjust door control devices to compensate for final operation of heating and ventilating equipment.

3.16 ADJUSTING AND CLEANING

A. At final completion, hardware must be left clean and free from disfigurement. Make final adjustment to door closers and other items of hardware. Where hardware is found defective repair or replace or otherwise correct as directed.

B. Adjust door closers to meet opening force requirements of Uniform Federal Accessibility Standards.

C. Final Adjustment: Wherever hardware installation is made more than one month prior to acceptance or occupancy of space or area, return to work during week prior to acceptance or occupancy, and make final check and adjustment of hardware items in such space or area. Clean operating items as necessary to restore proper function and finish of hardware and doors.

D. Instruct Owner's personnel in proper adjustment and maintenance of door hardware and hardware finishes.

E. Clean adjacent surfaces soiled by hardware installation.

3.17 PROTECTION

A. Provide for proper protection of items of hardware until Owner accepts Project as complete.

3.18 HARDWARE GROUPS

A. The following schedule of hardware groups must be considered a guide only, and the supplier is cautioned to refer to general conditions, special conditions, and the preamble to this section. It must be the hardware supplier's responsibility to furnish all required hardware.

B. Refer to the door schedule for hardware group required at each door opening.

HARDWARE SET # 04

FOR USE ON DOOR # (S):

HASKELL
DOORS E AND G

EACH TO HAVE:

QTY	DESCRIPTION	CATALOG NUMBER	FINISH MFR
1 EA	CONTINUOUS HINGE	224HD	CLR IVE
1 EA	POWER TRANSFER	EPT10 CON	689 VON
1 EA	ELEC PANIC HARDWARE	EPT-98-EO	626 VON
1 EA	SURFACE CLOSER	4111 EDA	689 VON
1 EA	OVERHEAD STOP	90	626 LCN
1 EA	DOOR SWEEP	BY DOOR MFR.	626 GLY
1 EA	THRESHOLD	BY DOOR MFR.	

08710 - 15

08 7100
DOOR HARDWARE

SECTION 08 7100 – DOOR HARDWARE

3.19 FIELD QUALITY CONTROL

A. After installation has been completed, provide services of qualified hardware consultant to check Project to determine proper application of finish hardware according to schedule. Also check operation and adjustment of hardware items.

B. Adjust door control devices to compensate for final operation of heating and ventilating equipment.

3.20 ADJUSTING AND CLEANING

A. At final completion, hardware must be left clean and free from disfigurement. Make final adjustment to door closers and other items of hardware. Where hardware is found defective repair or replace or otherwise correct as directed.

B. Adjust door closers to meet opening force requirements of Uniform Federal Accessibility Standards.

C. Final Adjustment: Wherever hardware installation is made more than one month prior to acceptance or occupancy of space or area, return to work during week prior to acceptance or occupancy, and make final check and adjustment of hardware items in such space or area. Clean operating items as necessary to restore proper function and finish of hardware and doors.

D. Instruct Owner's personnel in proper adjustment and maintenance of door hardware and hardware finishes.

E. Clean adjacent surfaces soiled by hardware installation.

3.21 PROTECTION

A. Provide for proper protection of items of hardware until Owner accepts Project as complete.

3.22 HARDWARE GROUPS

A. The following schedule of hardware groups must be considered a guide only, and the supplier is cautioned to refer to general conditions, special conditions, and the preamble to this section. It must be the hardware supplier's responsibility to furnish all required hardware.

B. Refer to the door schedule for hardware group required at each door opening.

HARDWARE SET # 05

FOR USE ON DOOR # (S):

HASKELL
DOOR K

EACH TO HAVE:

QTY	DESCRIPTION	CATALOG NUMBER	FINISH MFR
1 EA	CONTINUOUS HINGE	224HD	CLR IVE
1 EA	POWER TRANSFER	EPT10 CON	689 VON
1 EA	ELEC PANIC HARDWARE	EPT-98-EO	626 VON
1 EA	SURFACE CLOSER	4111 EDA	689 VON
1 EA	OVERHEAD STOP	90	626 LCN
1 EA	DOOR SWEEP	BY DOOR MFR.	626 GLY
1 EA	THRESHOLD	BY DOOR MFR.	

08710 - 17

08 7100
DOOR HARDWARE

SECTION 08 7100 – DOOR HARDWARE

3.23 FIELD QUALITY CONTROL

A. After installation has been completed, provide services of qualified hardware consultant to check Project to determine proper application of finish hardware according to schedule. Also check operation and adjustment of hardware items.

B. Adjust door control devices to compensate for final operation of heating and ventilating equipment.

3.24 ADJUSTING AND CLEANING

A. At final completion, hardware must be left clean and free from disfigurement. Make final adjustment to door closers and other items of hardware. Where hardware is found defective repair or replace or otherwise correct as directed.

B. Adjust door closers to meet opening force requirements of Uniform Federal Accessibility Standards.

C. Final Adjustment: Wherever hardware installation is made more than one month prior to acceptance or occupancy of space or area, return to work during week prior to acceptance or occupancy, and make final check and adjustment of hardware items in such space or area. Clean operating items as necessary to restore proper function and finish of hardware and doors.

D. Instruct Owner's personnel in proper adjustment and maintenance of door hardware and hardware finishes.

E. Clean adjacent surfaces soiled by hardware installation.

3.25 PROTECTION

A. Provide for proper protection of items of hardware until Owner accepts Project as complete.

3.26 HARDWARE GROUPS

A. The following schedule of hardware groups must be considered a guide only, and the supplier is cautioned to refer to general conditions, special conditions, and the preamble to this section. It must be the hardware supplier's responsibility to furnish all required hardware.

B. Refer to the door schedule for hardware group required at each door opening.

HARDWARE SET # 06

FOR USE ON DOOR # (S):

HASKELL
DOORS L AND M

EACH TO HAVE:

QTY	DESCRIPTION	CATALOG NUMBER	FINISH MFR
1 EA	CONTINUOUS HINGE	224HD	CLR IVE
1 EA	POWER TRANSFER	EPT10 CON	689 VON
1 EA	ELEC PANIC HARDWARE	EPT-98-EO	626 VON
1 EA	SURFACE CLOSER	4111 EDA	689 VON
1 EA	OVERHEAD STOP	90	626 LCN
1 EA	DOOR SWEEP	BY DOOR MFR.	626 GLY
1 EA	THRESHOLD	BY DOOR MFR.	

08710 - 19

08 7100
DOOR HARDWARE

SECTION 08 7100 – DOOR HARDWARE

3.27 FIELD QUALITY CONTROL

A. After installation has been completed, provide services of qualified hardware consultant to check Project to determine proper application of finish hardware according to schedule. Also check operation and adjustment of hardware items.

B. Adjust door control devices to compensate for final operation of heating and ventilating equipment.

3.28 ADJUSTING AND CLEANING

A. At final completion, hardware must be left clean and free from disfigurement. Make final adjustment to door closers and other items of hardware. Where hardware is found defective repair or replace or otherwise correct as directed.

B. Adjust door closers to meet opening force requirements of Uniform Federal Accessibility Standards.

C. Final Adjustment: Wherever hardware installation is made more than one month prior to acceptance or occupancy of space or area, return to work during week prior to acceptance or occupancy, and make final check and adjustment of hardware items in such space or area. Clean operating items as necessary to restore proper function and finish of hardware and doors.

D. Instruct Owner's personnel in proper adjustment and maintenance of door hardware and hardware finishes.

E. Clean adjacent surfaces soiled by hardware installation.

3.29 PROTECTION

A. Provide for proper protection of items of hardware until Owner accepts Project as complete.

3.30 HARDWARE GROUPS

A. The following schedule of hardware groups must be considered a guide only, and the supplier is cautioned to refer to general conditions, special conditions, and the preamble to this section. It must be the hardware supplier's responsibility to furnish all required hardware.

B. Refer to the door schedule for hardware group required at each door opening.

HARDWARE SET # 07

FOR USE ON DOOR # (S):

HASKELL
DOORS N AND O

EACH TO HAVE:

QTY	DESCRIPTION	CATALOG NUMBER	FINISH MFR
1 EA	CONTINUOUS HINGE	224HD	CLR IVE
1 EA	POWER TRANSFER	EPT10 CON	689 VON
1 EA	ELEC PANIC HARDWARE	EPT-98-EO	626 VON
1 EA	SURFACE CLOSER	4111 EDA	689 VON
1 EA	OVERHEAD STOP	90	626 LCN
1 EA	DOOR SWEEP	BY DOOR MFR.	626 GLY
1 EA	THRESHOLD	BY DOOR MFR.	

08710 - 21

08 7100
DOOR HARDWARE

SECTION 08 7100 – DOOR HARDWARE

3.31 FIELD QUALITY CONTROL

A. After installation has been completed, provide services of qualified hardware consultant to check Project to determine proper application of finish hardware according to schedule. Also check operation and adjustment of hardware items.

B. Adjust door control devices to compensate for final operation of heating and ventilating equipment.

3.32 ADJUSTING AND CLEANING

A. At final completion, hardware must be left clean and free from disfigurement. Make final adjustment to door closers and other items of hardware. Where hardware is found defective repair or replace or otherwise correct as directed.

B. Adjust door closers to meet opening force requirements of Uniform Federal Accessibility Standards.

C. Final Adjustment: Wherever hardware installation is made more than one month prior to acceptance or occupancy of space or area, return to work during week prior to acceptance or occupancy, and make final check and adjustment of hardware items in such space or area. Clean operating items as necessary to restore proper function and finish of hardware and doors.

D. Instruct Owner's personnel in proper adjustment and maintenance of door hardware and hardware finishes.

E. Clean adjacent surfaces soiled by hardware installation.

3.33 PROTECTION

A. Provide for proper protection of items of hardware until Owner accepts Project as complete.

3.34 HARDWARE GROUPS

A. The following schedule of hardware groups must be considered a guide only, and the supplier is cautioned to refer to general conditions, special conditions, and the preamble to this section. It must be the hardware supplier's responsibility to furnish all required hardware.

B. Refer to the door schedule for hardware group required at each door opening.

HARDWARE SET # 08

FOR USE ON DOOR # (S):

HASKELL
DOORS P AND Q

EACH TO HAVE:

QTY	DESCRIPTION	CATALOG NUMBER	FINISH MFR
1 EA	CONTINUOUS HINGE	224HD	CLR IVE
1 EA	POWER TRANSFER	EPT10 CON	689 VON
1 EA	ELEC PANIC HARDWARE	EPT-98-EO	626 VON
1 EA	SURFACE CLOSER	4111 EDA	689 VON
1 EA	OVERHEAD STOP	90	626 LCN
1 EA	DOOR SWEEP	BY DOOR MFR.	626 GLY
1 EA	THRESHOLD	BY DOOR MFR.	

08710 - 23

08 7100
DOOR HARDWARE

SECTION 08 7100 – DOOR HARDWARE

3.35 FIELD QUALITY CONTROL

A. After installation has been completed, provide services of qualified hardware consultant to check Project to determine proper application of finish hardware according to schedule. Also check operation and adjustment of hardware items.

B. Adjust door control devices to compensate for final operation of heating and ventilating equipment.

3.36 ADJUSTING AND CLEANING

A. At final completion, hardware must be left clean and free from disfigurement. Make final adjustment to door closers and other items of hardware. Where hardware is found defective repair or replace or otherwise correct as directed.

B. Adjust door closers to meet opening force requirements of Uniform Federal Accessibility Standards.

C. Final Adjustment: Wherever hardware installation is made more than one month prior to acceptance or occupancy of space or area, return to work during week prior to acceptance or occupancy, and make final check and adjustment of hardware items in such space or area. Clean operating items as necessary to restore proper function and finish of hardware and doors.

D. Instruct Owner's personnel in proper adjustment and maintenance of door hardware and hardware finishes.

E. Clean adjacent surfaces soiled by hardware installation.

3.37 PROTECTION

A. Provide for proper protection of items of hardware until Owner accepts Project as complete.

3.38 HARDWARE GROUPS

A. The following schedule of hardware groups must be considered a guide only, and the supplier is cautioned to refer to general conditions, special conditions, and the preamble to this section. It must be the hardware supplier's responsibility to furnish all required hardware.

B. Refer to the door schedule for hardware group required at each door opening.

HARDWARE SET # 09

FOR USE ON DOOR # (S):

HASKELL
DOORS R AND S

EACH TO HAVE:

QTY	DESCRIPTION	CATALOG NUMBER	FINISH MFR
1 EA	CONTINUOUS HINGE	224HD	CLR IVE
1 EA	POWER TRANSFER	EPT10 CON	689 VON
1 EA	ELEC PANIC HARDWARE	EPT-98-EO	626 VON
1 EA	SURFACE CLOSER	4111 EDA	689 VON
1 EA	OVERHEAD STOP	90	626 LCN
1 EA	DOOR SWEEP	BY DOOR MFR.	626 GLY
1 EA	THRESHOLD	BY DOOR MFR.	

08710 - 25

08 7100
DOOR HARDWARE

SECTION 08 7100 – DOOR HARDWARE

3.39 FIELD QUALITY CONTROL

A. After installation has been completed, provide services of qualified hardware consultant to check Project to determine proper application of finish hardware according to schedule. Also check operation and adjustment of hardware items.

B. Adjust door control devices to compensate for final operation of heating and ventilating equipment.

3.40 ADJUSTING AND CLEANING

A. At final completion, hardware must be left clean and free from disfigurement. Make final adjustment to door closers and other items of hardware. Where hardware is found defective repair or replace or otherwise correct as directed.

B. Adjust door closers to meet opening force requirements of Uniform Federal Accessibility Standards.

C. Final Adjustment: Wherever hardware installation is made more than one month prior to acceptance or occupancy of space or area, return to work during week prior to acceptance or occupancy, and make final check and adjustment of hardware items in such space or area. Clean operating items as necessary to restore proper function and finish of hardware and doors.

D. Instruct Owner's personnel in proper adjustment and maintenance of door hardware and hardware finishes.

E. Clean adjacent surfaces soiled by hardware installation.

3.41 PROTECTION

A. Provide for proper protection of items of hardware until Owner accepts Project as complete.

3.42 HARDWARE GROUPS

A. The following schedule of hardware groups must be considered a guide only, and the supplier is cautioned to refer to general conditions, special conditions, and the preamble to this section. It must be the hardware supplier's responsibility to furnish all required hardware.

B. Refer to the door schedule for hardware group required at each door opening.

HARDWARE SET # 10

FOR USE ON DOOR # (S):

HASKELL
DOORS T AND V

EACH TO HAVE:

QTY	DESCRIPTION	CATALOG NUMBER	FINISH MFR
1 EA	CONTINUOUS HINGE	224HD	CLR IVE
1 EA	POWER TRANSFER	EPT10 CON	689 VON
1 EA	ELEC PANIC HARDWARE	EPT-98-EO	626 VON
1 EA	SURFACE CLOSER	4111 EDA	689 VON
1 EA	OVERHEAD STOP	90	626 LCN
1 EA	DOOR SWEEP	BY DOOR MFR.	626 GLY
1 EA	THRESHOLD	BY DOOR MFR.	

08710 - 27

08 7100
DOOR HARDWARE

SECTION 08 7100 – DOOR HARDWARE

3.43 FIELD QUALITY CONTROL

A. After installation has been completed, provide services of qualified hardware consultant to check Project to determine proper application of finish hardware according to schedule. Also check operation and adjustment of hardware items.

B. Adjust door control devices to compensate for final operation of heating and ventilating equipment.

3.44 ADJUSTING AND CLEANING

A. At final completion, hardware must be left clean and free from disfigurement. Make final adjustment to door closers and other items of hardware. Where hardware is found defective repair or replace or otherwise correct as directed.

B. Adjust door closers to meet opening force requirements of Uniform Federal Accessibility Standards.

C. Final Adjustment: Wherever hardware installation is made more than one month prior to acceptance or occupancy of space or area, return to work during week prior to acceptance or occupancy, and make final check and adjustment of hardware items in such space or area. Clean operating items as necessary to restore proper function and finish of hardware and doors.

D. Instruct Owner's personnel in proper adjustment and maintenance of door hardware and hardware finishes.

E. Clean adjacent surfaces soiled by hardware installation.

3.45 PROTECTION

A. Provide for proper protection of items of hardware until Owner accepts Project as complete.

3.46 HARDWARE GROUPS

A. The following schedule of hardware groups must be considered a guide only, and the supplier is cautioned to refer to general conditions, special conditions, and the preamble to this section. It must be the hardware supplier's responsibility to furnish all required hardware.

B. Refer to the door schedule for hardware group required at each door opening.

HARDWARE SET # 11

FOR USE ON DOOR # (S):

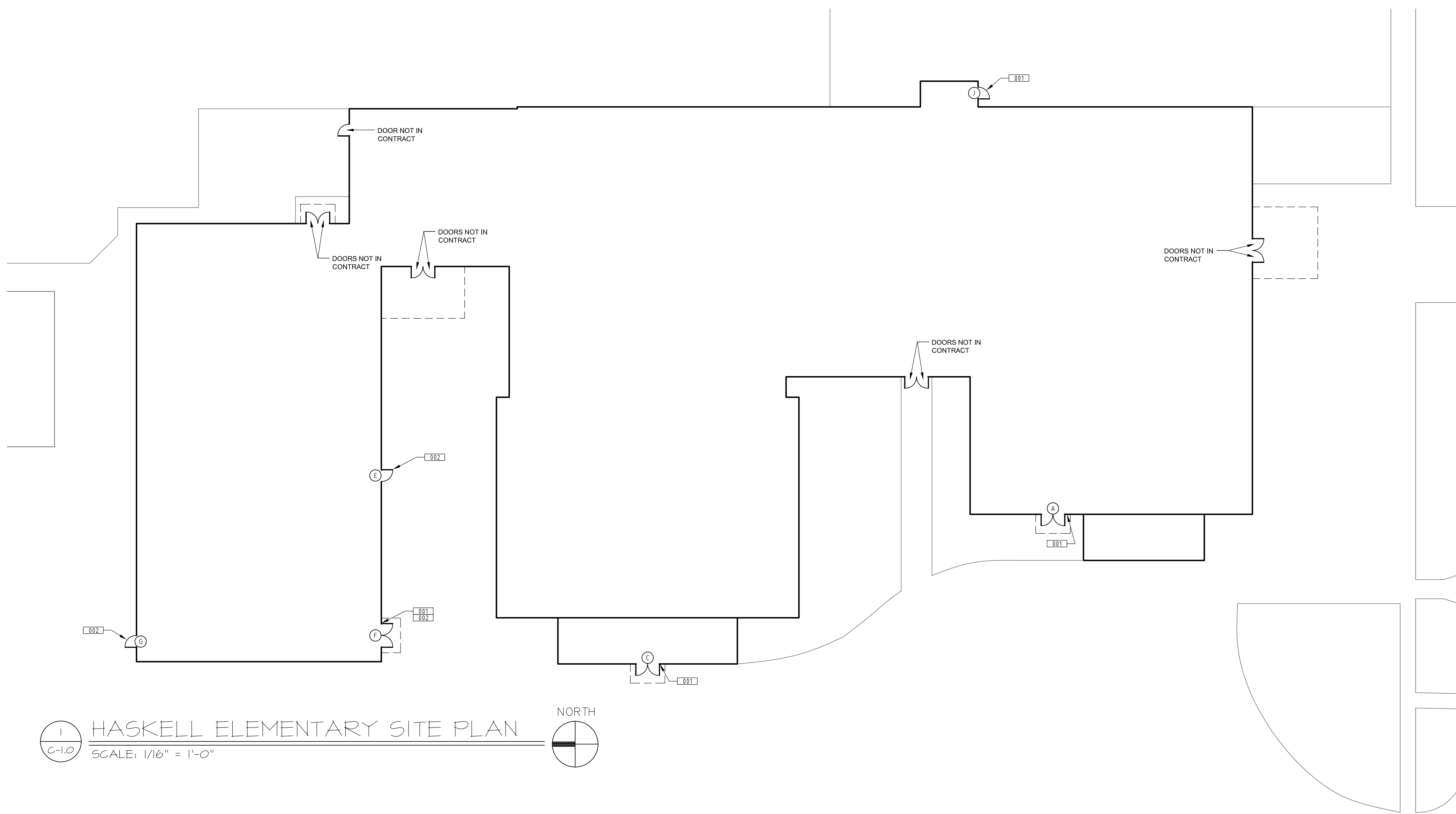
HASKELL
DOORS W AND X

EACH TO HAVE:

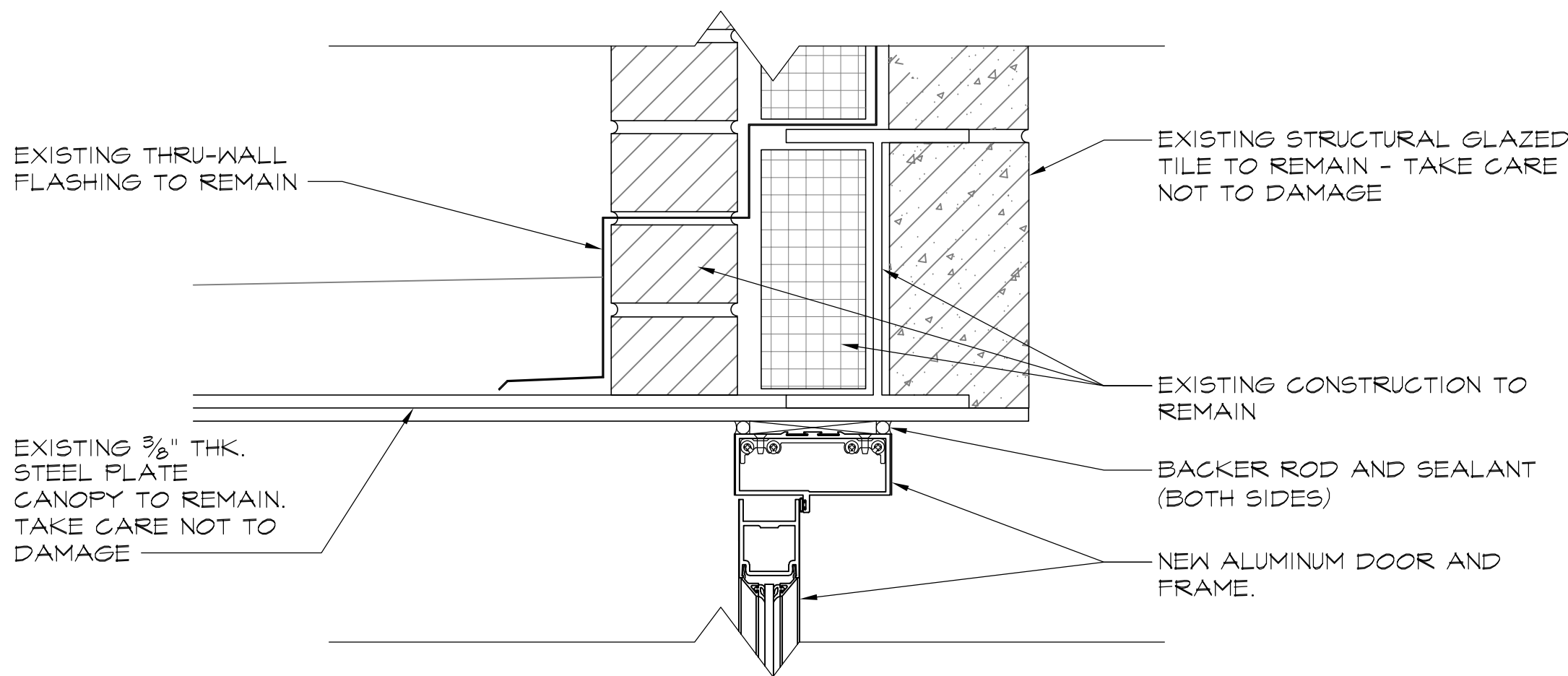
QTY	DESCRIPTION	CATALOG NUMBER	FINISH MFR
1 EA	CONTINUOUS HINGE	224HD	CLR IVE
1 EA	POWER TRANSFER	EPT10 CON	689 VON
1 EA	ELEC PANIC HARDWARE	EPT-98-EO	626 VON
1 EA	SURFACE CLOSER	4111 EDA	689 VON
1 EA	OVERHEAD STOP	90	626 LCN
1 EA	DOOR SWEEP	BY DOOR MFR.	626 GLY
1 EA	THRESHOLD	BY DOOR MFR.	

08710 - 29

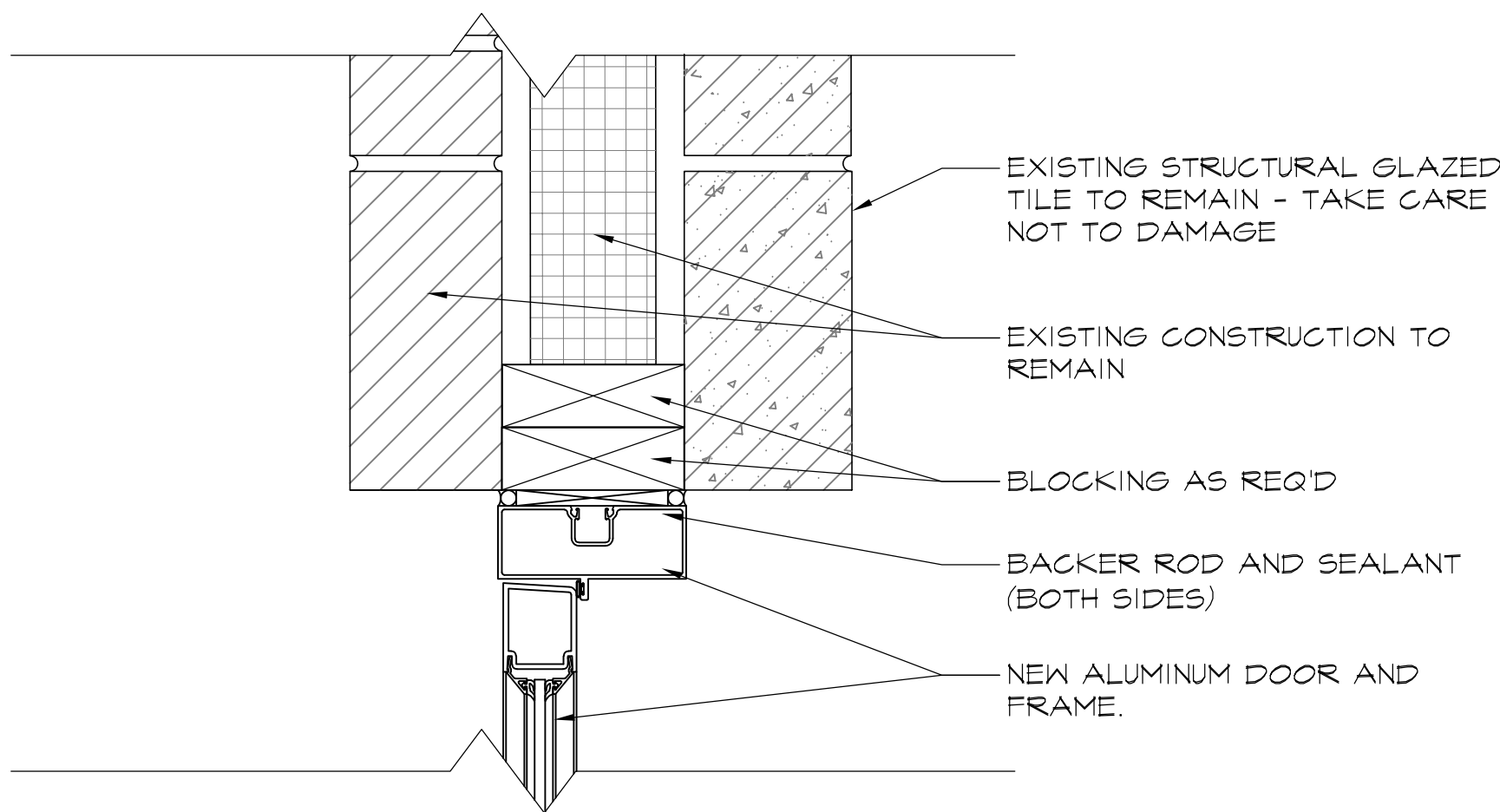
08 7100
DOOR



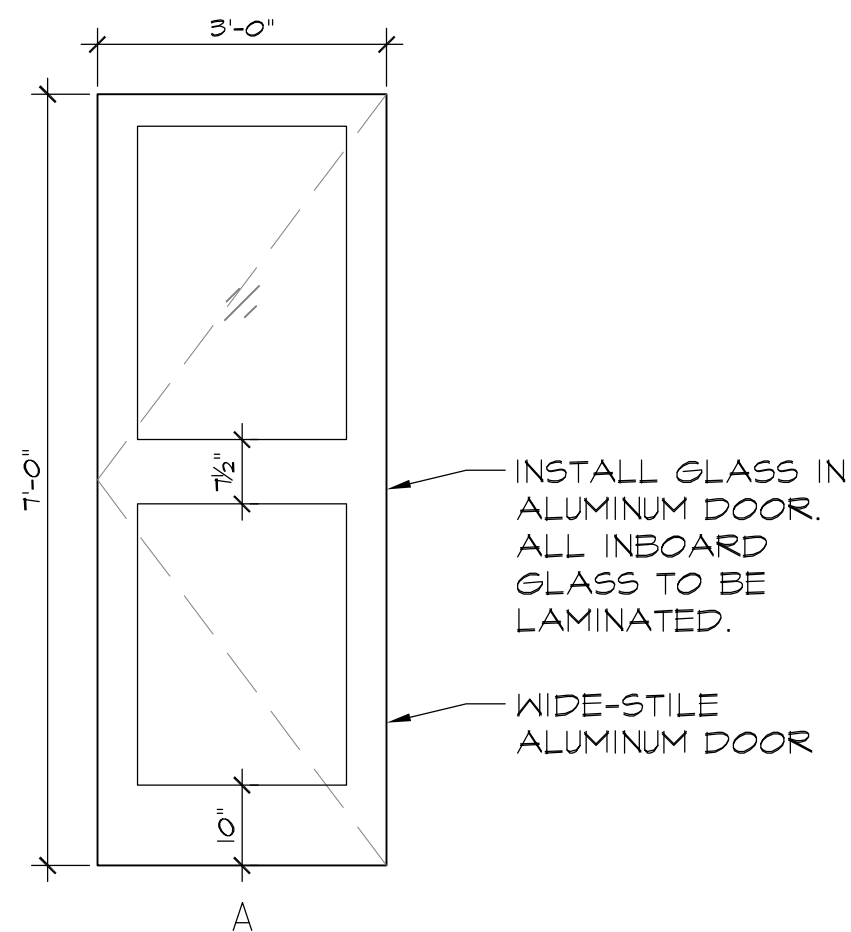
1 HASKELL ELEMENTARY SITE PLAN
C-1.0 SCALE: 1/16" = 1'-0" NORTH



2 DOOR DETAIL @ HEAD
C-1.0 SCALE: 1/2" = 1'-0"



3 DOOR DETAIL @ JAMB
C-1.0 SCALE: 1/2" = 1'-0"



4 DOOR TYPE SCHEDULE
C-1.0 SCALE: 1/2" = 1'-0"

KEYNOTES (THIS SHEET ONLY)

001

PROXIMITY READER TO BE REMOVED AND REINSTALLED BY OTHERS

002

NEW DOOR TO RECEIVE FROSTED GLASS

LEGEND OF SYMBOLS (THIS SHEET ONLY)

0

DOOR TAG - SEE DOOR SCHEDULES AND DETAILS ON THIS SHEET

DOOR SCHEDULE				
DOOR	DOOR TYPE	DIMENSION	HARDWARE	REMARKS
A	A	(2) 3' x 7'	SET #01	SEE SHEET G-1.2 FOR MORE INFO.
C	A	(2) 3' x 7'	SET #01	SEE SHEET G-1.2 FOR MORE INFO.
E	A	3' x 7'	SET #04	SEE SHEET G-1.2 FOR MORE INFO.
F	A	(2) 3' x 7'	SET #01	SEE SHEET G-1.2 FOR MORE INFO.
G	A	3' x 7'	SET #04	SEE SHEET G-1.2 FOR MORE INFO.
J	A	3' x 7'	SET #03	SEE SHEET G-1.2 FOR MORE INFO.

1919 Architects

4000 Morsay Drive
Rockford, IL 61107
(815) 223-8222

www.1919architects.com

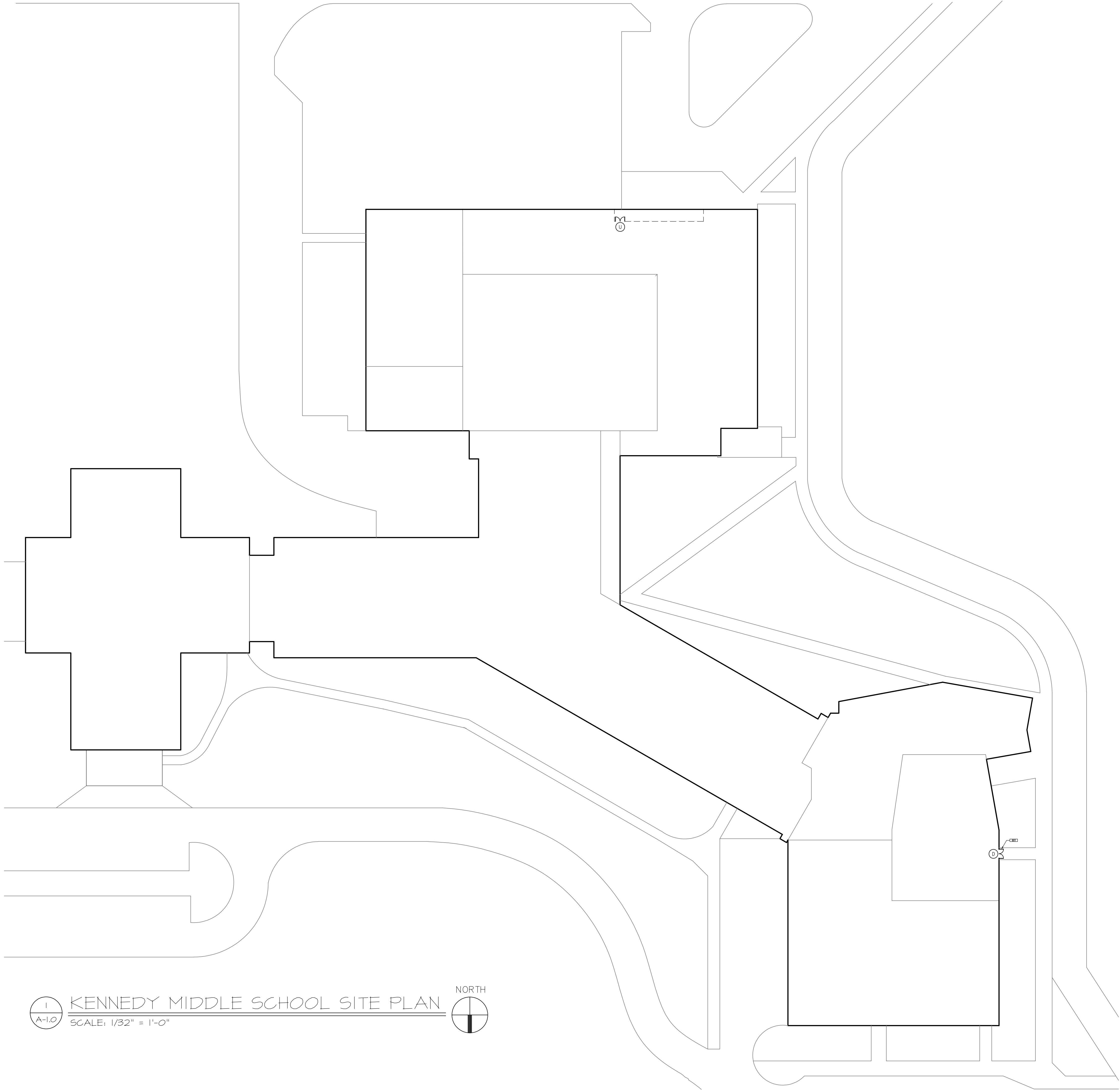
	ARCHITECT			
	OWNER		CONTRACTOR	
HASKELL/KENNEDY DOOR REPLACEMENT		520 N. PIERPONT AVE. ROCKFORD IL, 61103	ROB	Appd
515 MAPLE ST. ROCKFORD IL, 61103		04-12-2022	JMK	Rev
21-113410		04-12-2022	JMK	Rev
HASKELL SITE PLAN AND DETAILS		Rev. Date		
		Sheet No:		

C-1.0

1
A-1.0

KENNEDY MIDDLE SCHOOL SITE PLAN

SCALE: 1/32" = 1'-0"



LEGEND OF SYMBOLS (THIS SHEET ONLY)

Ⓢ DOOR TAG - SEE DOOR TYPE SCHEDULE AND DETAILS ON C-1.0

DOOR SCHEDULE

DOOR	DOOR TYPE	DIMENSION	HARDWARE	REMARKS
D	A	(2) 3' x 7'	SET #02	SEE SHEET G-1.2 FOR MORE INFO.
U	A	(2) 3' x 7'	SET #02	SEE SHEET G-1.2 FOR MORE INFO.

KEYNOTES

(THIS SHEET ONLY)

NEW DOOR TO RECEIVE FROSTED GLASS



1919 Architects
4000 Morsay Drive
Rockford, IL 61107
(815) 223-8222
www.1919architects.com

HASKELL/KENNEDY DOOR REPLACEMENT

OWNER	ARCHITECT	CONTRACTOR	BONDING CO.

515 MAPLE ST.
ROCKFORD IL,
61103
21151410
04-12-2022
JMK
RDB
Appd
Emr

KENNEDY SITE PLAN

Rev. Date	
Sheet No:	C-2.0