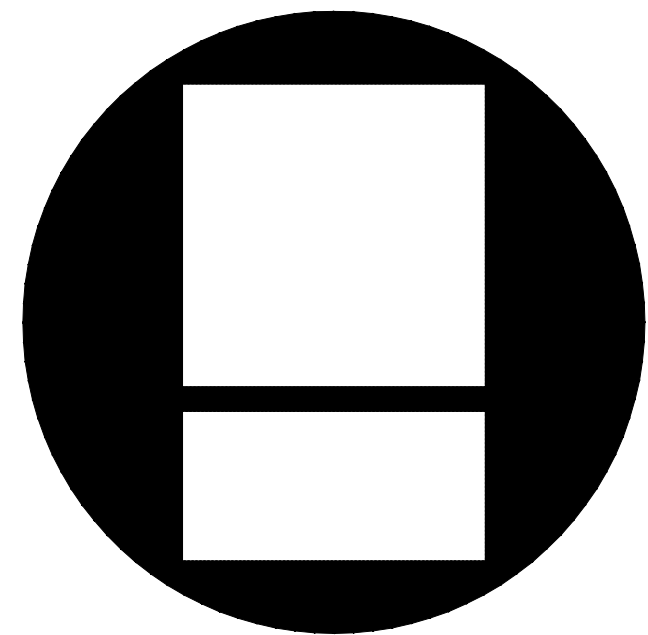


RPS PROJECT #2122
IFB# 21-13

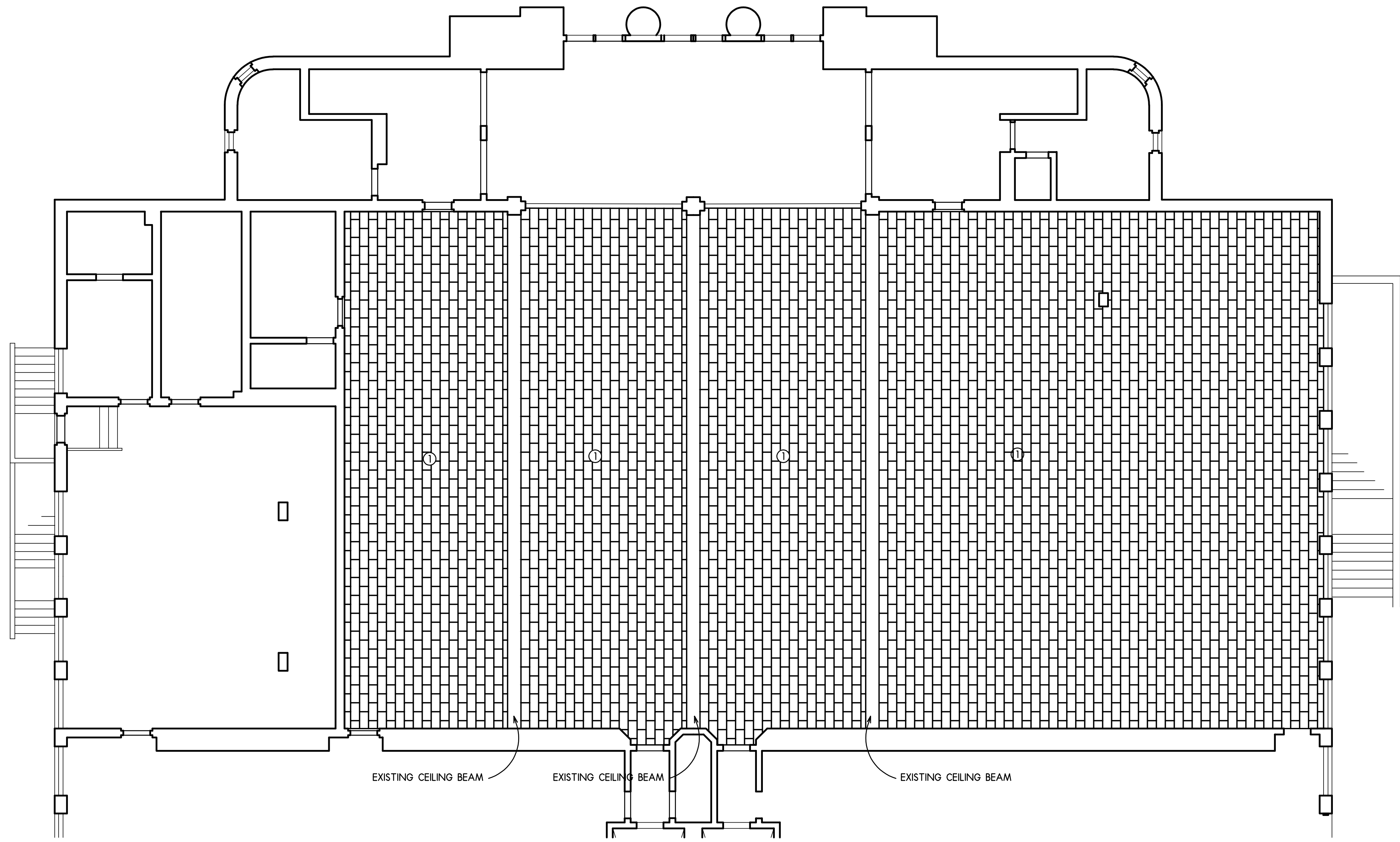


4949 Harrison Avenue Suite 100

Rockford, Illinois

JANUARY 25, 2021

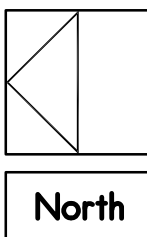
[illegible]



1 PARTIAL FIRST FLOOR REFLECTED
CEILING DEMOLITION PLAN
SCALE: 1/8" = 1'-0"

- KEYNOTES
1. REMOVE EXISTING CEILING IN ITS ENTIRETY. PREPARE AREA FOR NEW ACP CEILING.

PARTIAL FIRST FLOOR PLAN-
DEMOLITION
SCALE: 1/8" = 1'-0"

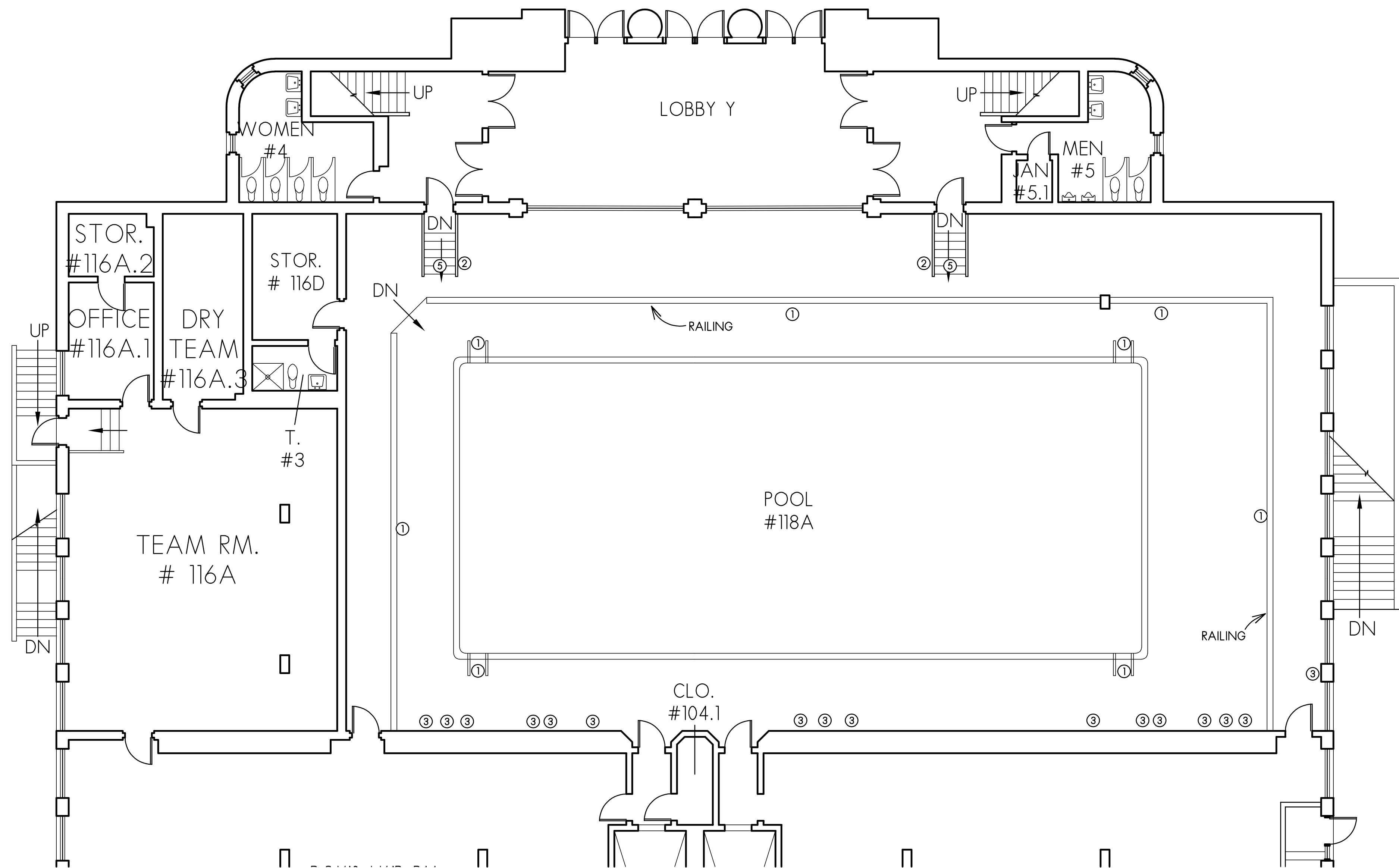


DATE: 01-25-2021
PROJECT NUMBER
30269
SHEET NUMBER
DI.1

ISSUED FOR: DATE
01-25-21
DRAWN: AH
APPROVED: SN

COPYRIGHT 2020
All drawn and written information appearing herein shall not be duplicated, disclosed, or otherwise used without the written consent of Larson & Darby Group.

WEST MIDDLE SCHOOL
POOL RENOVATIONS - ROCKFORD IL
ROCKFORD PUBLIC SCHOOLS 205



1 PARTIAL FIRST FLOOR PLAN
SCALE: 1/8" = 1'-0"

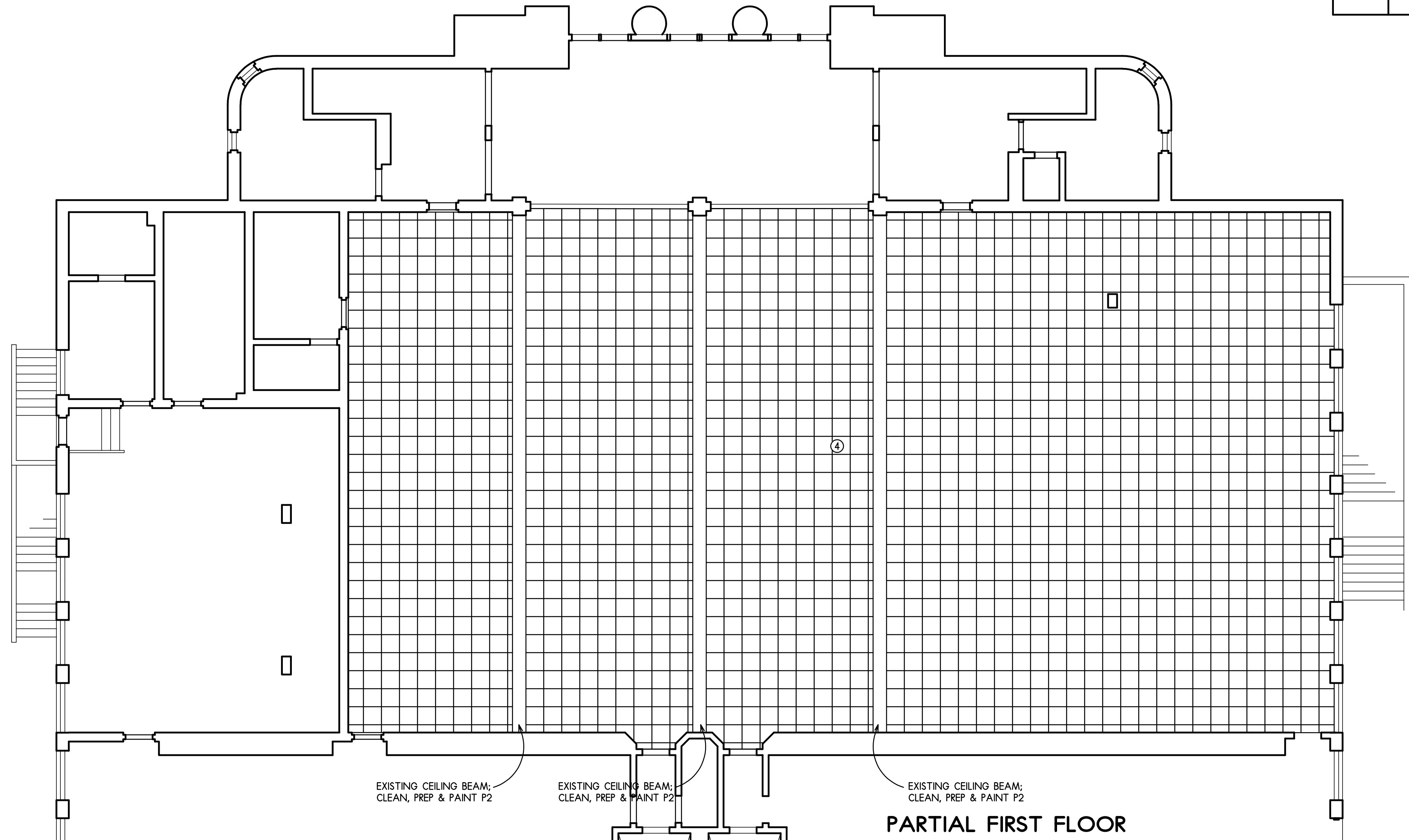
KEYNOTES

1. PAINT EXISTING METAL RAILINGS P1, INCLUDING WALL AND FLOOR BRACKETS AND HARDWARE.
2. PAINT EXISTING METAL STAIR COMPONENTS (RAILINGS, STRINGERS, RISERS) P1 PRIOR TO PAINTING; GRIND OUT RUST FROM EXISTING RISERS AND REPLACE WITH NEW STEEL. PREPARE STAIRS AS REQUIRED FOR NEW PAINT. EXISTING TILE ON TREAD TO REMAIN.
3. PAINT ALL EXISTING WALL, GRILLES AND ELECTRICAL PANELS P1. LOCATIONS SHOWN ARE APPROXIMATE.
4. INSTALL NEW ACPI CEILING AT EXISTING CEILING HEIGHT; 15'-9". CENTER GRID IN ALL DIRECTIONS WITHIN ROOM.
5. AS PART OF ALTERNATE #1, REMOVE THE EXISTING TILE ON THE STAIR TREADS, PREPARE THE SURFACE FOR NEW TILE, AND INSTALL NEW TILE AND NOSING.

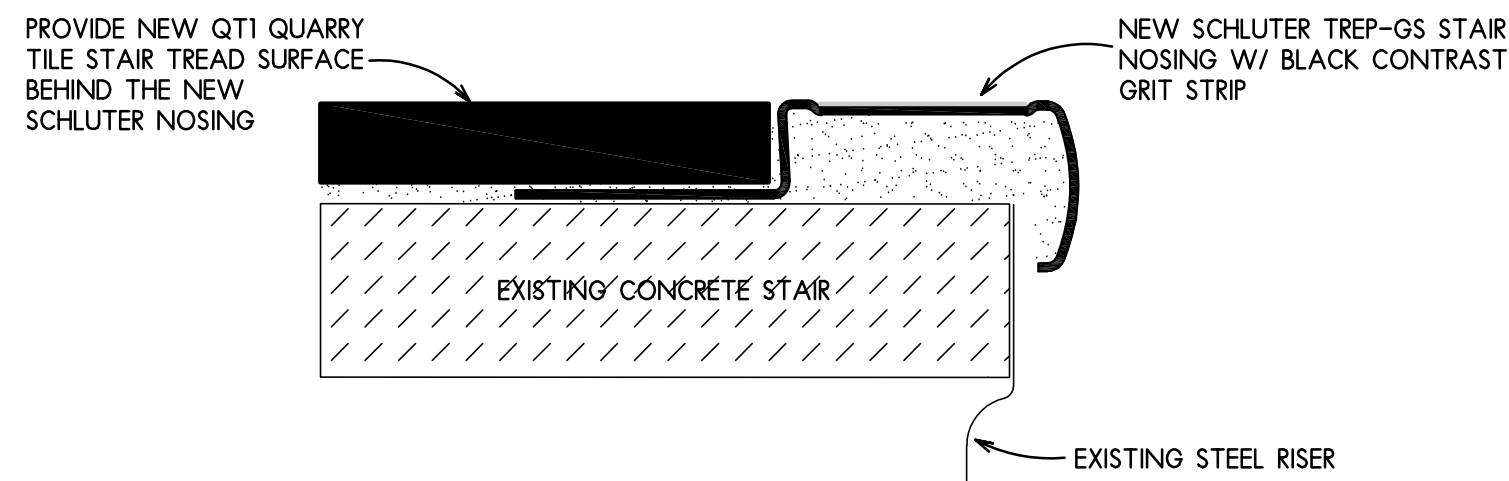
CODE	MATERIAL	MANUFACTURER	PRODUCT NO.	FINISH MATERIAL LEGEND	REMARKS
ACPI	ACOUSTICAL CEILING PANEL	USG CEILING	RADAR CERAMIC	COLOR: #56644, WHITE, 2'x2'x5/8" SQUARE EDGE W/ ZXL4 DONN 15/16" WHITE GRID	CONTRACTOR MUST USE STAINLESS STEEL HANGER WIRE & GRID CLIPS
P1	PAINT	SHERWIN WILLIAMS	-	COLOR: #SW0024 CURIO GRAY	PAINT FOR RAILINGS, METAL STAIRS, GRILLES, AND ELEC. PANELS
P2	PAINT	SHERWIN WILLIAMS	-	COLOR: #7757 HIGH REFLECTIVE WHITE	PAINT FOR EXISTING, EXPOSED BEAMS
QT1	QUARRY TILE	DALTILE	QUARRY	COLOR: #0Q42 ARID GRAY, ABRASIVE SURFACE; 6"x6" W/ LATICRETE, #145 LIGHT SMOKE GROUT	INCLUDE 1 1/8" DEPTH SCHLUTER TREP-G-S NOSING W/ BLACK CONTRAST GRIP TAPE STRIP

GENERAL NOTES: FINISH SCHEDULE

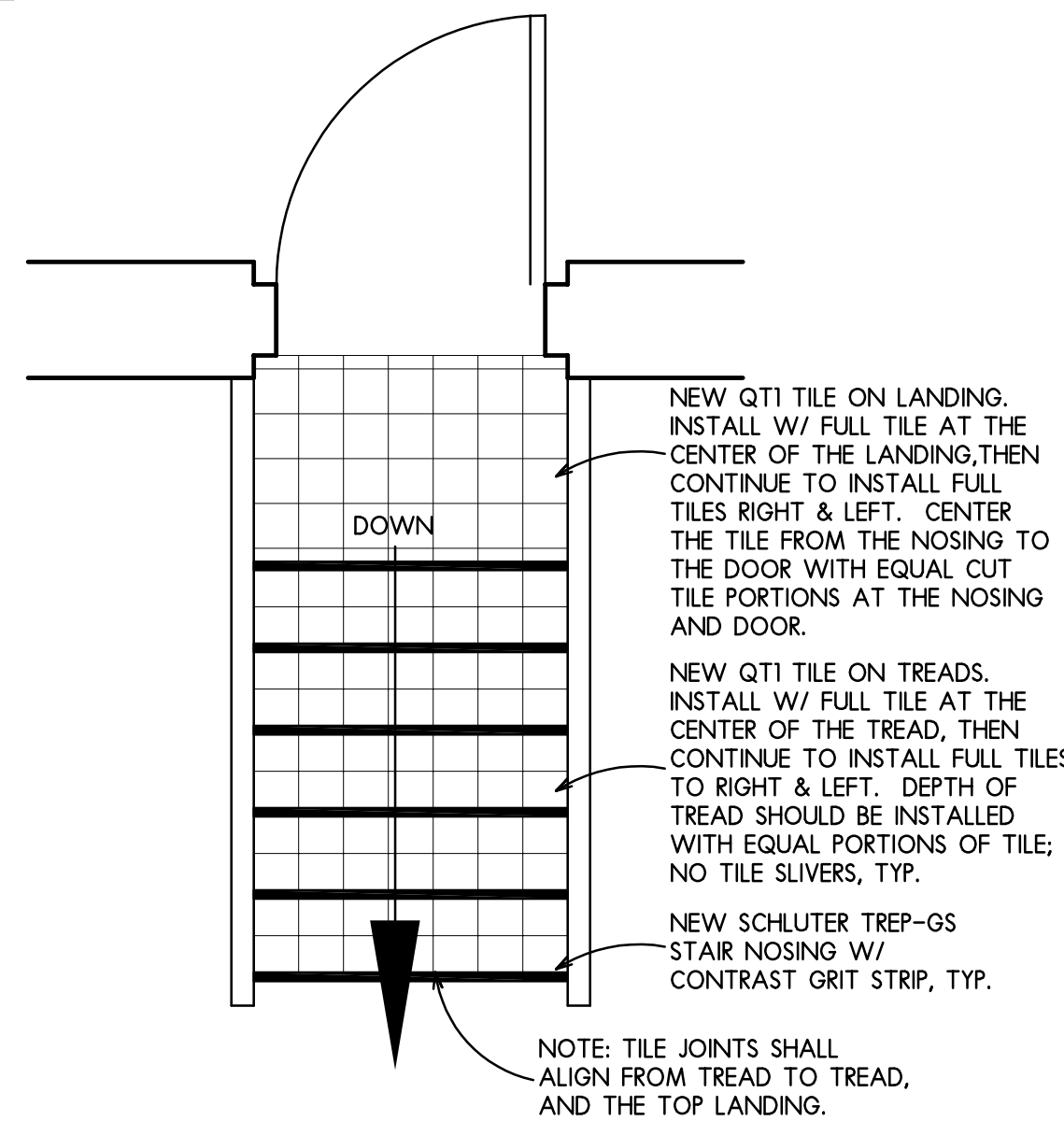
1. REFER TO SPECIFICATIONS FOR PAINT TYPES AND SYSTEMS.
2. CLEAN & PREPARE ALL SURFACES AS REQUIRED PRIOR TO PAINTING.
3. PROTECT EXISTING SURFACES DURING CONSTRUCTION.



2 PARTIAL FIRST FLOOR REFLECTED CEILING PLAN
SCALE: 1/8" = 1'-0"

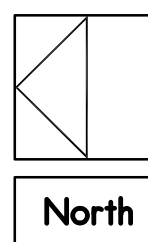


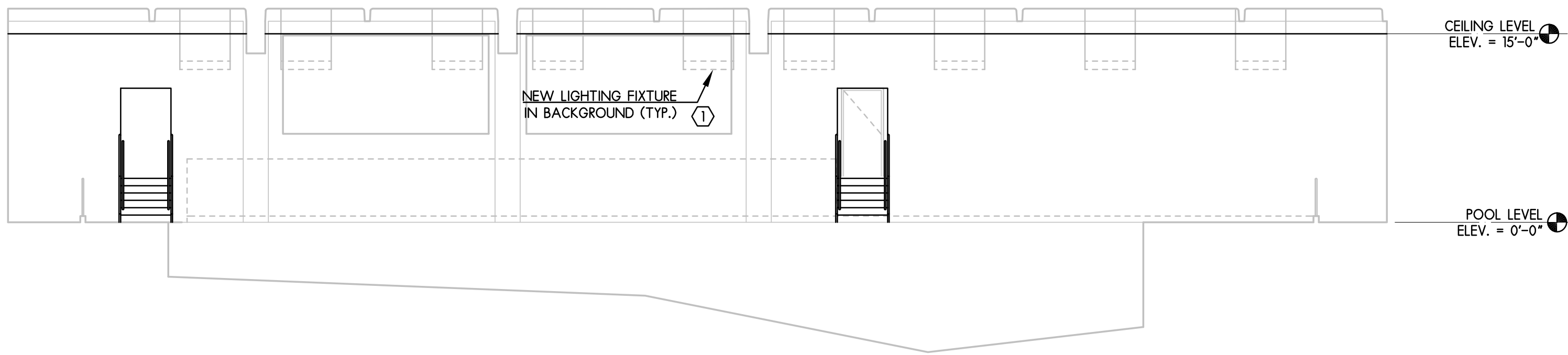
3 STAIR REPAIR ALTERNATE: NOSING DETAIL
SCALE: NOT TO SCALE



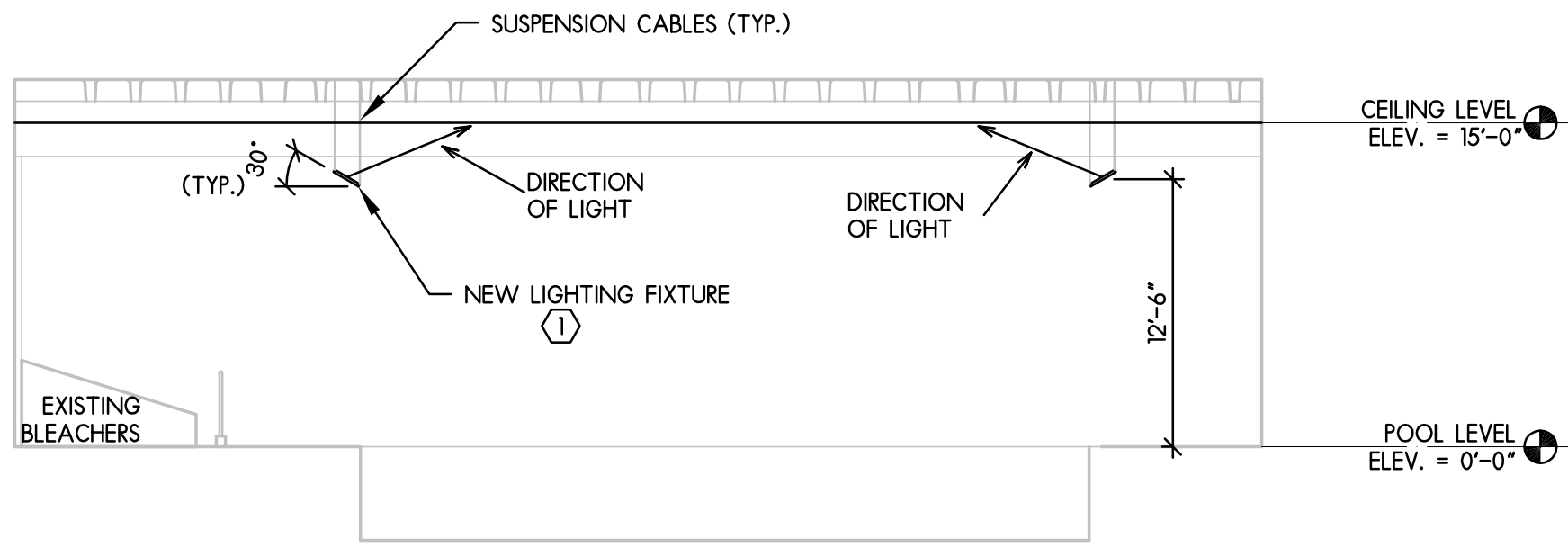
4 STAIR REPAIR ALTERNATE: TILE INSTALLATION PATTERN
SCALE: NOT TO SCALE

PARTIAL FIRST FLOOR PLAN
SCALE: 1/8" = 1'-0"





2 INTERIOR ELEVATION LOOKING EAST
SCALE: 1/8" = 1'-0"



3 INTERIOR ELEVATION LOOKING SOUTH
SCALE: 1/8" = 1'-0"

GENERAL NOTES:

- NEW LIGHTING IN NATATORIUM TO BE FED FROM EXISTING CIRCUITS. PROVIDE APPROPRIATE NIGHT POWER PACKS ONE PER ZONE, SO THAT NEW LIGHTING IS NIGHT COMPATIBLE.
- CONDUITS IN SWIMMING POOL AREA SHALL BE PVC COATED GALVANIZED STEEL.
- PROVIDE GROMMET WHERE LIGHT FIXTURE SUPPORT AND POWER CABLES PASS THRU THE SUSPENDED CEILING.

KEYED NOTES:

- AS INDICATED ALL FIXTURES TYPE "A" SHALL BE SUSPENDED SO THAT LIGHT IS DISTRIBUTED INDIRECTLY. HANG THE FIXTURE AT A 30 DEGREE ANGLE TOWARDS POOL. EACH LIGHT BAR IN THE FIXTURE IS ALSO ADJUSTABLE. IN ADDITION TO THE OVERALL FIXTURE BEING TILTED AT 30 DEGREES ADJUST EACH INDIVIDUAL LIGHT BAR SO THAT THE LIGHT IS FOCUSED TOWARDS THE CENTER OF THE CEILING ABOVE THE POOL. PROVIDE GROMMET FOR SUPPORT AND POWER CABLES AND SEALANT WHERE THE CABLES PASS THRU THE CEILING TILES.
- REPLACE EXISTING LINE VOLTAGE SWITCHES WITH APPROPRIATE LOW VOLTAGE SWITCHES. NEW SWITCHES SHALL BE KEYED STYLE SWITCHES AND NIGHT COMPATIBLE. PROVIDE WHITE SWITCHES AND STAINLESS STEEL COVER PLATES.
- THIS FIXTURE SHALL ACT AS A NIGHT LIGHT LIGHT SHALL ALWAYS BE ON.
- REMOVE ALL EXISTING RECESSED LIGHT FIXTURES.

ELECTRICAL SYMBOLS

- A ——— 10 STRIP LIGHTING FIXTURE. SIZE AND TYPE AS INDICATED ON SCHEDULE.
- RECESSED FIXTURE
- LIGHTING FIXTURES:
"A" UPPER CASE LETTER INDICATES LIGHTING FIXTURE TYPE. REFER TO LIGHTING FIXTURE SCHEDULE FOR DESCRIPTION AND MOUNTING.
"1" NUMBER INDICATES BRANCH CIRCUIT NUMBER(S)
"o" LOWER CASE LETTER INDICATES SWITCH CONTROL(S)
- \$ SWITCH
- SURFACE MOUNTED NORMAL BRANCH CIRCUIT PANELBOARD
- EMERGENCY EXIT SIGN
- EMERGENCY EXIT SIGN WITH EMERGENCY LIGHTS
- EMERGENCY LIGHTS WITHOUT BATTERY PACK
- NL NIGHT LIGHT
R TO REMAIN
X EXISTING TO BE REMOVED
XR EXISTING TO BE RELOCATED
XN EXISTING NEW LOCATION
VF VERIFY IN FIELD
3W THREE WAY

GENERAL ELECTRICAL NOTES

- NOTES ON DRAWINGS SHALL APPLY TO ALL SIMILAR CONDITIONS WHETHER THEY ARE REPEATED OR NOT.
- THE CONTRACTOR MUST VISIT THE SITE TO FAMILIARIZE HIMSELF WITH THE EXISTING SITE AND BUILDING CONDITIONS WHICH WILL BE AFFECTED DURING CONSTRUCTION PRIOR TO SUBMITTING HIS BID PROPOSAL. CONTRACTOR IS CAUTIONED THAT THE PROJECT IS A REMODELING JOB AND IT IS ASSUMED THAT HE HAS INCLUDED FUNDS IN HIS BID TO COVER UNFORESEEN ITEMS WHICH MUST BE MOVED, RELOCATED OR ADJUSTED TO FIT HIS WORK. NO EXTRA COMPENSATION WILL BE ALLOWED FOR ANY EXTRA WORK CAUSED BY FAILURE TO VISIT, EXAMINE OR VERIFY.
- ALL EXISTING EQUIPMENT IS TO REMAIN OPERATIONAL DURING CONSTRUCTION PERIOD. ALL TEMPORARY WIRING OR REROUTING OF CIRCUITRY TO ACHIEVE THIS IS BY THE ELECTRICAL CONTRACTOR. SHUTDOWN OF EXISTING SERVICES SHALL ONLY BE PERMITTED UPON WRITTEN APPROVAL FROM THE OWNER AND THEN ONLY FOR THAT DATE AND DURATION AGREED UPON. INCLUDE ALL PREMIUM TIME CHARGES IN THE BASE BID.
- EXISTING CONDUIT IN SAME PLACE MAY BE REUSED WHERE POSSIBLE. PULL NEW WIRE AS REQUIRED. ALL UNUSED CONDUIT, WIRE, JUNCTION BOXES, ETC. WILL BE REMOVED. RELOCATED EXISTING CONDUIT SHALL NOT BE ALLOWED.
- UNLESS NOTED OTHERWISE, SURFACE METAL RACEWAY SHALL BE USED FOR DEVICES ON EXISTING MASONRY WALLS. AS MUCH AS PRACTICAL, WHEREVER FEASIBLE, INSTALL CONDUITS BEHIND A WALL IN AN UNFINISHED ROOM AND PENETRATE INTO AN ELECTRICAL DEVICE TO BE INSTALLED IN FINISHED AREA. IF THIS IS NOT FEASIBLE, PROVIDE SURFACE METAL RACEWAY IN THE ROOM WHERE ELECTRICAL DEVICE NEEDS TO BE INSTALLED. THE SURFACE METAL RACEWAY SHALL BE ROUTED IN THE CORNER AND/OR ADJACENT TO WINDOW, DOOR FRAMEWORK ETC. SO IT IS AS INCONSPICUOUS AS POSSIBLE. FOR SAKE OF SIMPLICITY ONLY THE TERM "CONDUIT" IS USED IN MOST CASES IN THIS DOCUMENT. HOWEVER, BASED UPON ABOVE, THE SURFACE METAL RACEWAY AND CONDUIT SHALL BE USED, AS APPLICABLE. WHERE SURFACE METAL RACEWAY IS USED ONE TWO CHANNEL RACEWAY WITH DIVIDER CAN BE USED (FOR POWER & LOW VOLTAGE) WHERE APPLICABLE.
- THE EXISTING EQUIPMENT IS SHOWN BASED UPON THE INFORMATION OBTAINED THROUGH BRIEF SURVEY OF THE FACILITY. CONTRACTOR IS TO SURVEY THE EXISTING FACILITY IN ORDER TO DETERMINE THE FULL EXTENT OF WORK AND BE COMPLETELY FAMILIAR WITH ALL THE EXISTING CONDITIONS INCLUDING PLUMBING, HVAC, ELECTRICAL, ETC. THE ARCHITECT/ENGINEER AND OWNER ASSUME NO RESPONSIBILITY IN RESPECT TO THE ACCURACY OF SUCH INFORMATION SHOWN ON THE DRAWINGS. CONTRACTOR SHALL MAKE ADEQUATE ALLOWANCE IN HIS BID FOR SOME DEVIATIONS TO SUCH INFORMATION.
- WHERE EXISTING CONDITIONS PREVENT PROPER INSTALLATION OF PROPOSED WORK, REROUTE, EXTEND OR ALTER EXISTING WORK SO AS TO ACCOMMODATE PROPOSED WORK REQUIREMENTS.
- CIRCUIT NUMBERS SHOWN FOR EXISTING PANELS ARE FOR REFERENCE ONLY. USE NEXT AVAILABLE CIRCUITS AND PROVIDE APPROPRIATE SIZE BREAKERS.
- IN GENERAL, DASHED LINES INDICATE EXISTING ITEMS TO BE REMOVED, LIGHT SOLID LINES INDICATE ITEMS TO REMAIN AND DARK SOLID LINES INDICATE NEW ITEMS.
- THE SYSTEMS PROVIDED BY THIS CONTRACTOR SHALL BE COMPLETELY OPERATIONAL REGARDLESS OF OMISSION OF MINOR ITEMS, SUCH AS CIRCUIT NUMBER FOR RELAY, A CIRCUIT NUMBER NEXT TO A LIGHTING FIXTURE, ETC.
- UPDATE PANEL DIRECTORY INDICATING LOAD SERVED.
- DUE TO THE SMALL SCALE AND INTERFERENCE OF EXISTING EQUIPMENT, EACH AND EVERY ITEM IS NOT SHOWN. SHOWN INFORMATION IS INTENDED AS A GUIDE. CONTRACTOR SHALL VERIFY INFORMATION AND CONDITIONS IN THE FIELD.
- ALL RECEPTACLES LOCATED WITHIN 6" OF SOURCE OF WATER (SUCH AS SINK) AND ALL OUTDOOR RECEPTACLES SHALL BE GFI TYPE, WHETHER SPECIFICALLY INDICATED OR NOT.
- PROVIDE EXPANSION FITTINGS FOR ALL ELECTRICAL RACEWAYS AT EVERY EXPANSION JOINT.
- ALL SWITCHES IN COMMON AREAS SUCH AS HALLWAYS, CORRIDORS, VESTIBULES, ETC. SHALL BE KEYED TYPE WHETHER SPECIFICALLY INDICATED OR NOT.
- PROVIDE SEPARATE DEDICATED GROUNDING CONDUCTOR IN EACH FEEDER AND BRANCH CIRCUIT WIRING CIRCUIT.
- THE ELECTRICAL DRAWINGS SHOW DIRECT PRINCIPLE WORK WHICH MUST BE ACCOMPLISHED UNDER THIS CONTRACT. INDIRECT AND INCIDENTAL WORK WILL ALSO BE NECESSARY DUE TO CHANGES AFFECTING EXISTING ARCHITECTURAL, MECHANICAL, PLUMBING OR OTHER SYSTEMS. SUCH INCIDENTAL WORK IS ALSO PART OF THIS CONTRACT. INSPECT THOSE AREA, AND ASCERTAIN WORK NEEDED AND DO THAT WORK IN ACCORDANCE WITH THE CONTRACT REQUIREMENTS, AT NO ADDITIONAL COST.
- WHERE "VF" IS INDICATED NEXT TO A DEVICE, CONTRACTOR SHALL VERIFY ITS REQUIREMENT IN FIELD. THIS INCLUDES VERIFICATION OF DEVICE TYPE, LOCATION, WIRING CONDUIT AND CIRCUIT BREAKER ETC. PROVIDE APPROPRIATE DEVICE, WIRING, CONDUIT, CIRCUIT BREAKER ETC. AS REQUIRED.
- WHERE EQUIPMENT DEVICES ARE INDICATED TO BE REMOVED, REMOVE ACCESSIBLE, UNUSABLE CONDUITS & WIRING. IF CONDUITS ARE NOT ACCESSIBLE THEY MAY BE ABANDONED. MAINTAIN CONTINUITY TO THE LOAD WHICH IS TO REMAIN.
- ALL BACKBOXES FOR DATA OUTLETS SHALL BE 2.75" DEEP UNLESS NOTED OTHERWISE.

1 LIGHTING PLAN

SCALE: 1/8" = 1'-0"

LIGHT FIXTURE SCHEDULE

TAG	DESCRIPTION	MOUNTING	VOLTAGE	NUMBER OF LAMPS	INPUT WATTS	LAMP TYPE	MANUFACTURER	CATALOG NUMBER	NOTES
A	4' SUSPENDED LINEAR LED	SUSPENDED	UNV	-	262.63	LED	LUX DYNAMICS	LUX-K10-3-D-HO2-850-4-U10-NL-NAT-IND-BOT-XX-H10-18Y-NAT	SEE DETAIL 2 AND 3 FOR FIXTURE MOUNTING DETAILS
A/NL/E	4' SUSPENDED LINEAR LED	SUSPENDED	UNV		262.63	LED	LUX DYNAMICS	LUX-K10-3-D-HO2-850-4-U10-NL-NAT-IND-BOT-XX-H10-18Y-NAT	SEE DETAIL 2 AND 3 FOR FIXTURE MOUNTING DETAILS
A1	4' SURFACE MOUNT LINEAR LED	SURFACE	UNV		100	LED	LUX DYNAMICS	360P-4-URDL-850-U10-HM-WA-NAT	

1.1. SUFFIX "E" AFTER THE LIGHT FIXTURE TYPE DENOTES THE FIXTURE IS EMERGENCY TYPE. FOR EXAMPLE, FIXTURE TYPE "AE" ON FLOOR PLAN INDICATES THAT IT IS AN EMERGENCY FIXTURE SAME AS TYPE "A". THIS FIXTURE SHALL ALWAYS BE ON.

POOL AREA LIGHTING PLAN

SCALE: 1/8" = 1'-0"

